



January 2013 Addenda

## In This Issue

[Director's Cuts](#)

[Museum Highlights](#)

The Wisconsin Historical Society Educator Update contains the most current education-related news from the Wisconsin Historical Society. With information on classroom resources, National History Day, the Wisconsin Historical Museum, the Library-Archives Division, historical sites all around Wisconsin, and more, our monthly roundup is packed with ideas for Wisconsin educators.

## Director's Cuts

Looks like Winter Storm Draco managed to snow-in a museum update (my apologies)!

The Wisconsin Historical Museum would like to remind you to start scheduling for 2013-see below.

Happy New Year!

Kurt Griesemer  
School Services Director

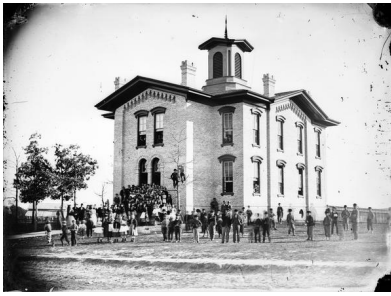


## Another January Highlight from the Wisconsin Historical Museum

**[Beth Lemke](#), Museum Educator, Wisconsin Historical Museum**

As the holiday season comes to a close and we begin preparing for the spring semester, the [Wisconsin Historical Museum](#) wants to encourage you to begin setting up your visit to Madison. We are happy to help coordinate a date to visit the State Capitol, Historical Museum, Veterans Museum, and any of the other Madison destinations you'd like to attend.

Additionally, schools with a 50 percent or greater Economic Disadvantage Rate, as determined by the Department of Public Instruction, may qualify for reduced rates. Groups



visiting during the off-peak months of January and February also qualify for fee reductions.

Want to know what your options are for education programs at the Wisconsin Historical Museum? View

the Wisconsin Historical Museum [Printable Field Trip Catalog](#) to discover the opportunities.

If you are interested in making reservations for your 2013 field trip please contact [Bethany Brander](#), Museum Tour Registrar, or at 608-264-6557.

---

Thank you for reading this special addenda edition of the update. We'll be back next year with even more great resources as we start looking ahead to what our historic sites are planning.

**Sincerely,**

[Kurt Griesemer](#)

School Services Director  
Wisconsin Historical Society

© 2012 Wisconsin Historical Society

Collecting, Preserving and Sharing Stories Since 1846