



WISCONSIN
HISTORICAL
SOCIETY

Eighth Annual
Local History
and
Historic
Preservation
Conference

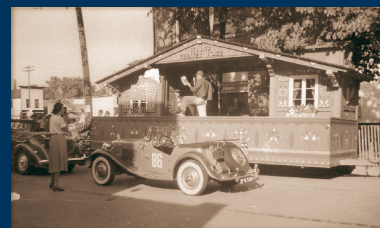
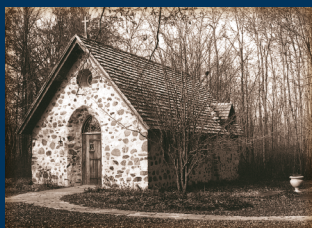


WISCONSIN
COUNCIL FOR
Local History

Elkhart Lake, Wisconsin
The Osthoff Resort and Conference Center
OCTOBER 24-25, 2014



For conference information visit
wisconsinhistory.org/conference



Thank you to the Wisconsin Trust for Historic Preservation, the Wisconsin Council for Local History, and the Wisconsin Association of Historic Preservation Commissions for their financial support of the 2014 Annual Local History and Historic Preservation Conference.

On behalf of the Wisconsin Historical Society, I am pleased to invite you to Elkhart Lake to attend the Eighth Annual Local History and Historic Preservation Conference. The conference has grown to become a dynamic gathering that brings together professionals and volunteers to discuss their work in collecting, preserving, and sharing our history.

The size of the Osthoff Conference Center gave us the opportunity to expand the conference to encompass a total of 36 sessions and 15 workshops. In addition we have extended programming on Saturday to accommodate two training tracks for the historic preservation commissioner, one track for the beginner and another for the advanced. The Wisconsin Council for Local History is also sponsoring the third annual **Town Square**, a networking opportunity for historical and preservation groups to share information about their organizations and programs. The always popular Saturday morning **Coffee and Conversation** hour will also return.

We also hope you'll enjoy exploring the exciting history and natural beauty of Elkhart Lake. We are particularly excited to offer our Friday night program, **Taste Traditions of Wisconsin: A Special Evening at Wade House**, where you can enjoy a carriage ride, experience the new state-of-the-art Carriage Museum and Visitor Center, dine on delicious seasonal food, and hear a rollicking presentation on Victorians' Secrets from Leslie Bellais. While we are in Elkhart Lake, you also may want to check out the Society's **Wisconsin History Tour**, which will be based in nearby Sheboygan during the month of October, with events taking place throughout the weekend (see page 6). Please make plans to join us in Elkhart Lake!



WISCONSIN
COUNCIL FOR
Local History



WISCONSIN TRUST
for
HISTORIC PRESERVATION



Jim Draeger
State Historic Preservation Officer
Director of Outreach
Historic Preservation–Public History
Wisconsin Historical Society

2014 FEATURED SPEAKERS

MICHAEL PERRY



Mr. Perry is the author of the Wisconsin Historical Society Press book *From the Top: Brief Transmissions from Tent Show Radio* as well as numerous other books, including *Population 485* and the *New York Times* bestseller *Visiting Tom*. His live humor recordings include *Never Stand behind a Sneezing Cow* and *The Clodhopper Monologues*. He also writes a weekly column for the *Wisconsin State Journal*. He lives in rural Wisconsin with his wife and daughters and is privileged to serve as a first responder with the local fire department.

[SEE MORE
ON PAGE 12](#)

TAMARA THOMSEN



Ms. Thomsen has worked as a maritime archaeologist for the Wisconsin Historical Society for ten years, where she has investigated shipwrecks in Lake Michigan and Lake Superior as well as in inland rivers, streams, and lakes. These investigations have resulted in Wisconsin having more shipwrecks listed on the National Register of Historic Places than any other state in the nation. In 2013, she received the Joyce S. Hayward Award for Historic Interpretation from the Association for Great Lakes Maritime History, and in 2014 she was inducted into the Women Divers Hall of Fame in recognition of her investigation of historic shipwrecks, water-filled natural caves, and abandoned zinc and lead mines in southwestern Wisconsin and her identification of an unusual community of microbes that is providing insights into mine remediation programs.

[SEE MORE
ON PAGE 8](#)

HEATHER MACINTOSH



Ms. MacIntosh is a Philadelphia-area preservation writer. Prior to becoming a writer, she was an advocate and preservation professional at the local and national levels. As president of Preservation Action (2004–2009), a nonprofit lobby for historic preservation in Washington, DC, she coordinated grassroots action on federal tax and funding matters, met with advocates throughout the country at statewide conferences, and authored *A Preservationist's Grassroots Guide to Congress* based on a dozen interviews with legislators and conversations with Capitol Hill staffers. As preservation advocate for Historic Seattle (2001–2004), she created *Preservation Seattle*, an online magazine focused on local preservation issues. She was deputy director of HistoryLink.org (1998–2000), the first online encyclopedia of local history. She is mother to two budding preservationists, Evelyn and Isabel.

[SEE MORE
ON PAGE 12-13](#)

LESLIE BELLAIS



Ms. Bellais is the curator of social history at the Wisconsin Historical Society. From an early age, Leslie loved visiting historic homes and sites, especially Colonial Williamsburg in Virginia. At age ten, she told her grandmother that she was going to attend the College of William and Mary and work at Colonial Williamsburg. Leslie accomplished that goal and went on to work at the Hershey Museum of American Life in Hershey, Pennsylvania. In 1990, she became the curator of costumes and textiles at the Wisconsin Historical Society, where she has curated popular exhibits on wide-ranging topics such as the history of weddings, the Wisconsin home front in World War I, Wisconsin Olympic athletes, Civil War mementos, and “Wisconsin Women of Style,” which featured some of the most stunning dresses in the Society’s collection, all worn by significant Wisconsin women. She is currently finishing her Ph.D. in American History at the University of Wisconsin–Madison.

[SEE MORE
ON PAGE 10](#)

CONFERENCE SESSION SCHEDULE

TIME	SESSION A	SESSION B	SESSION C	SESSION D	SESSION E
THURSDAY, OCTOBER 23					
4:00-6:00 PM	EARLY REGISTRATION				
4:00-6:00 PM	WISCONSIN COUNCIL FOR LOCAL HISTORY ADMINISTRATIVE COMMITTEE				
FRIDAY, OCTOBER 24					
8:45-9:00 AM	CONFERENCE OPENING REMARKS IN THE GRAND LIBELLE BALLROOM				
9:15-10:25 AM	Condition Assessment of Wood	Legal Structures for HP Non-profits	WHS Resources for Local Societies	Membership 101	History Geocaching
10:50-12:00 PM	Retro Renovation Revival	Aid to Local Commissions	State Burial Law	Insurance for Non-profits	Leveraging Visitor Engagement
12:15-1:30 PM	LUNCHEON PRESENTATION: THOMSEN				
1:45-2:55 PM	Historical Research Outside the Box	Wisconsin Preservation Stories	Understanding Collection Preservation Needs	Board Development	Building a Facebook Community
3:20-4:30 PM	Collecting Civil Rights Manuscripts	Adaptive Reuse on the Fox River	History of Elkhart Lake Road Race Circuit	Roberts Rules of Order	Bringing the Museum to the People
5:00-8:00 PM	TASTE TRADITIONS OF WISCONSIN: A SPECIAL EVENING AT WADE HOUSE				
SATURDAY, OCTOBER 25					
8:00-9:00 AM	COFFEE & CONVERSATION: INFORMATIONAL ROUND TABLE DISCUSSIONS IN THE GRAND LIBELLE BALLROOM				
9:15-10:25 AM	Planned Giving	Aztalan: Wisconsin City of Mystery	Importance of Architectural Surveys HPC Training BEGINNER	Historic Preservation Planning HPC Training ADVANCED	Develop and Manage Internships
10:50-12:00 PM	Collections Rehabilitation Projects	Keeping Your Audience in the Loop	Know Your Local Preservation Ordinance HPC Training BEGINNER	New State Rehabilitation Tax Credits HPC Training ADVANCED	Wisconsin Humanities Council Grants
12:15-1:30 PM	LUNCHEON PRESENTATION: PERRY				
1:45-2:55 PM			State and Federal Historic Preservation Law HPC Training BEGINNER	HPC Case Studies HPC Training ADVANCED	Historic Preservation Internships
2:30 PM	GUIDED TOURS OF THE HERMAN C. TIMM HOUSE AND THE PIONEER CORNER MUSEUM, NEW HOLSTEIN				
2:30 PM	EXPLORE WADE HOUSE				
3:20-4:30			Learn the Basics of the National Register HPC Training BEGINNER	Top Ten Preservation Advocacy Tips HPC Training ADVANCED	Public History Job Market

CONFERENCE WORKSHOP SCHEDULE

WORKSHOP 1

WORKSHOP 2

WORKSHOP 3

WORKSHOP 4

WORKSHOP 5

THURSDAY, OCTOBER 23

FRIDAY, OCTOBER 24

Word Up!
Creating Professional
Object Labels
LIMIT 30

PastPerfect 5:
Tools to Make It Work
for You
LIMIT 25

Tackling the
Challenges of Storage
LIMIT 16

Archives
Collecting 101
LIMIT 30

No Building Project
Too Small for Big Ideas
LIMIT 20

Historic Preservation
Planning: It's All About
the Future
LIMIT 30

Teachers, Students,
and Museums:
Successful Partnerships
LIMIT 30

Collection Care
on a Budget
LIMIT 24

Preserving Photographs:
The Basics
LIMIT 20

Introduction to Legal
Issues in Archives
LIMIT 30

SATURDAY, OCTOBER 25

Make Your Own
Advocacy Handbook
LIMIT 30

The Basics of
Managing an Archives
LIMIT 30

Revisiting the
Whitewater Historical
Society Museum
LIMIT 30

Collection
Management Policies
LIMIT 30

Oral History
for the Digital Age
LIMIT 24

VISIT THE TOUR!

The Wisconsin Historical Society is now on a major, multi-year statewide tour, traveling to communities throughout Wisconsin, visiting with an **EXHIBIT** and **PROGRAMMING** that shares the “tip of the iceberg” of the collections your Society holds for you.

This October, during the Local History and Historic Preservation Conference, the Tour is in Sheboygan! See the exhibit and join us for fun and educational events at the Military Heritage Museum, 824 South 8th Street in Sheboygan, just a short drive from The Osthoff Resort in Elkhart Lake.



Sharing Stories
One Community at a Time



**WISCONSIN
HISTORICAL
SOCIETY**

Collecting, Preserving and Sharing Stories since 1846

The Wisconsin History Tour is an Outreach Initiative of the Wisconsin Historical Society

For schedule and information: WisconsinHistoryTour.org



2014

- June Wausau
- July Ephraim
- August Verona
- September Racine
- October Sheboygan
- November La Crosse

2015

- January Milwaukee
- February Green Bay
- March Appleton
- April Waukesha
- May Eau Claire

And more to come!

- June 2016 Ashland

THURSDAY, OCTOBER 23

4:00–6:00PM
WISCONSIN COUNCIL
FOR LOCAL HISTORY –
ADMINISTRATIVE COMMITTEE

4:00-6:00PM
EARLY REGISTRATION

TOWN SQUARE

TOWN SQUARE

The Wisconsin Council for Local History is pleased to sponsor the third annual Town Square. This popular networking opportunity features table-top exhibits and information from various historical and preservation groups from around Wisconsin.

The Town Square will be open during registration and conference breaks. Conference attendees can gather for refreshments and networking opportunities to learn more about the various organizations. Town Square co-coordinator Alli Karrels commented that the Town Square gives organizations the opportunity to share their initiatives, projects, and success stories with conference attendees and colleagues within the museum field. Going on its third year, the Town Square has proven to be a popular success and creates a dialogue to “promote communication and cooperation among local history groups,” which is the mission of the Wisconsin Council for Local History. For more information, contact Chris Dunbar at bchs@netnet.net



CONFERENCE AGENDA

FRIDAY, OCTOBER 24

FRIDAY MORNING

REGISTRATION: STARTS 7:30AM

OPENING REMARKS: 8:45 – 9:00AM

GRAND LIBELLE BALLROOM

FRIDAY MORNING: 9:15–10:25AM

CONDITION ASSESSMENT OF WOOD

What are the differences between a hard wood and soft wood? What are the different characteristics of wood? How can you tell if a wood element needs repair or replacement? This presentation will focus on basic wood characteristics and commonly used inspection methods for assessing wood elements in buildings. Presented by **Bob Ross**, *project leader, USDA Forest Products Laboratory*

CREATIVE LEGAL STRUCTURES FOR HISTORIC PRESERVATION NONPROFITS

This program will describe how private clubs housed in historic buildings have partnered with nonprofits to raise funds to preserve club facilities. Presented by **Bruce T. Block** and **Lucien A. Beaudry**, *attorneys, Reinhart Boerner Van Deuren S.C.*

LOCAL HISTORY TREASURES IN THE WISCONSIN HISTORICAL SOCIETY ARCHIVES

Many local historians already know that the Wisconsin Historical Society Archives has a large collection of historical maps and photographs that cover hundreds of communities around the state. But there are also collections of personal papers, organizational documents, and government records that contain hidden troves of local history information. Some of these materials are now available online. This session will demonstrate how to find local history sources on the WHS website and in the archives collections. Presented by **Lee Grady**, *senior reference archivist, Wisconsin Historical Society*

MEMBERSHIP 101: THE BEST TIPS TO GROW YOUR MEMBERSHIP PROGRAM

Membership growth? Renewal cycles? Board pressure to grow membership revenue? Do these topics keep you up at night? If so, attend this session to learn the top ten easiest ways to grow and strengthen your organization's membership program. The session will also provide an overview of membership basics, including acquisition, retention, renewal cycles, and non-dues revenue generators. You will leave with new ideas, ways to respond to board pressure, and tactics to make the most of limited staff resources. Presented by **Laura Ingersoll**, *director of membership, Wisconsin Historical Foundation*

HISTORY GEOCACHING

Geocaching is a high-tech version of orienteering that uses a handheld global positioning system (GPS) instead of a compass. Geocachers find beginning coordinates at geocaching.com and then decode additional coordinates that link together connected waypoints of an area's history into a trail. Geocachers can't help but absorb some of the history that surrounds them as they follow the route to the final cache. You'll learn about the success of the Maritime History Geocaching project and how you can use geocaching to share important historical places and events in a nontraditional manner. Presented by **Wendy Lutzke**, *education curator, Wisconsin Maritime Museum*, and **Tamara Thomsen**, *underwater archaeologist, Wisconsin Historical Society*

FRIDAY MORNING: 10:50–12:00PM

THE RETRO RENOVATION REVIVAL—EVERYTHING OLD IS COOL AGAIN

Why is it that midcentury style—including homes, furniture, and decor—is now more popular than ever? Kate Battle is the managing editor for *RetroRenovation.com*, a daily website that helps owners of midcentury homes find the products and resources they need to remodel, renovate, and decorate in authentic midcentury style. She investigates why this retro revival appeals to everyone from the baby boomers who grew up in these homes to Generation X and beyond. Kate will also delve into post-World War II home design, share her own home renovation stories, and talk about the resources and mission of *RetroRenovation.com*. Presented by **Kate Battle**, *managing editor, RetroRenovation.com*

NEW WAYS TO AID LOCAL LANDMARKS AND PRESERVATION COMMISSIONS

Now celebrating its 30th year, the Wisconsin Association of Historic Preservation Commissions is taking new directions to assist local commissions and commissioners. Learn about our strategic plan, and tell us how we can directly help you and your local preservation efforts. Presented by **John Decker**, *director, Wisconsin Association of Historic Preservation Commissions*, and **Kathy Grace**, *president, Wisconsin Association of Historic Preservation Commissions*

WISCONSIN BURIAL SITE LAWS

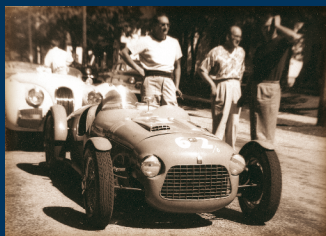
All burial sites in Wisconsin, no matter how old they are or who is buried in them, marked or unmarked, are protected by State Law. Local units of government have legal responsibilities to protect human burial sites. Learn about procedures that municipal and town officials must follow when selling land, dealing with abandoned cemeteries, or planning construction on public property. Presented by **Chip Harry L. Brown III, J.D.**, *government assistance and training specialist, Wisconsin Historical Society*

INSURANCE FOR NONPROFITS

Has your historical society ever filed an insurance claim? How did that work for you? This session will familiarize you with some of the various things your historical organization should consider before taking the lowest cost for various types of coverage, such as liability, directors and officers, and others. We'll also discuss risk management—things your group can do to lower your risk and save money. Presented by **David Mosher**, *Dave Mosher & Associates Insurance Services*

LEVERAGING VISITOR ENGAGEMENT TO HELP SUPPORT MUSEUM OPERATIONS

At the Wisconsin Historical Society's museums and historic sites, we know that visitors make a choice in how they spend their leisure time. Therefore, we proactively provide reasons to visit our museums by focusing on our guests and what they are interested in experiencing. The challenge is to provide engaging and compelling experiences, in the form of more interactive programming, to increase visitation and earned revenue. Creating a balance between competing as an attraction, sharing authentic stories of Wisconsin's history, managing expenses, and earning revenue sufficient to fund operations is achievable. Presented by **Cheryl Sullivan**, *administrator, Division of Museums and Historic Sites, Wisconsin Historical Society*



FRIDAY LUNCHEON: 12:15–1:30 PM

GRAND LIBELLE BALLROOM

WISCONSIN SHIPWRECKS: OUR MUSEUM OF THE INLAND SEAS

Today we think of the Great Lakes for recreation or as an obstacle to our travel, but before modern roads or rail, they were an important link for the settlement and growth of Wisconsin and the Midwest. It's easy to forget how integral maritime culture once was to our state, but if we simply look to the state seal, we find a sailor, an anchor, and a caulking mallet. Wisconsin has over 50 pristine and untouched shipwrecks listed on the National Register of Historic Places—more individually listed sites than any other state. Enjoy a photographic tour of Wisconsin's shipwrecks preserved in our museum of the inland seas.

Presented by **Tamara Thomsen**, *underwater archaeologist, Wisconsin Historical Society*



FRIDAY AFTERNOON: 1:45–2:55 PM

HISTORICAL RESEARCH OUTSIDE THE BOX: DENDROCHRONOLOGY, ANYONE?

Historic preservation research can involve more than just old records. This presentation will explore different ways to discover the history behind a historic house, photograph, or other object. James Hibbard will demonstrate, for example, how dendrochronology was used to determine the construction date of the historic Gratiot house near Shullsburg, Wisconsin. Attendees will gain a different perspective on how to research local history, get a clearer picture of the past, and learn new ways to look at historic preservation. Presented by **James Hibbard**, *university archivist, UW-Platteville*

WISCONSIN PRESERVATION STORIES

Board members from the Wisconsin Trust for Historic Preservation (WTHP) will highlight preservation stories and issues from across the state. They will also discuss the role of the WTHP as an information clearinghouse for local preservation organizations throughout Wisconsin. Presented by **Mark Ernst**, *AIA, LEED AP*, and **Matt Jarosz**, *board of directors, Wisconsin Trust for Historic Preservation*

UNDERSTANDING YOUR COLLECTION PRESERVATION NEEDS: INTRODUCTION TO THE PRESERVATION SELF-ASSESSMENT TOOL

Preservation of collections is important to all cultural institutions. Trying to get a handle on your preservation needs can be overwhelming and time consuming. This presentation will introduce you to the newly created IMLS Wisconsin Connecting to Collections preservation self-assessment tool. This tool guides you through reviewing the preservation conditions in your institution, determining what your most critical preservation needs are, and learning what you can do to make improvements now and take the next steps to get funding for the rest. It is meant for institutions to use at their own pace and covers libraries, museums, and archives. Presented by **Sarah Hopley**, *IMLS Connecting to Collections grant coordinator, Library-Archives, Wisconsin Historical Society*

BOARD DEVELOPMENT

Strong guidance and oversight from a board of directors is critical to a nonprofit's success. This session covers the basics of board service. Presented by **Diane Nixa**, *former director, Wisconsin Historical Foundation*

BUILDING A FACEBOOK COMMUNITY

When the Sauk Prairie Area Historical Society created their Facebook page two years ago, they had no idea the tremendous impact it would have on their membership growth and ability to collect and preserve local history, fundraise, and recruit volunteers. They've created a vibrant online resource that's community driven. Join them as they share key tips to setting up and maintaining your own Facebook page for maximum growth and intergenerational enjoyment. Presented by **Jody Kapp**, *director of development, Sauk Prairie Area Historical Society*, and **Jack Berndt**, *museum manager, Tripp Heritage Museum*



FRIDAY AFTERNOON: 3:20–4:30PM

BOLD, NOT TO SAY CRAZY: COLLECTING CIVIL RIGHTS MANUSCRIPTS DURING THE 1960S

The Wisconsin Historical Society owns one of the nation's richest archives on the civil rights movement—tens of thousands of letters, diaries, meeting minutes, phone logs, internal memos, photographs, press releases, audio tapes, and other primary sources. For half a century, every serious researcher on the movement has used the Society's archives. They often ask why this national treasure is in Wisconsin rather than Washington. This session will describe how a handful of student workers at the Society risked their lives to save the records from destruction while the struggle was still unfolding. Presented by **Michael Edmonds**, deputy director, Library-Archives, Wisconsin Historical Society

A VISIT TO GRANDMA'S HOUSE: ADAPTIVE REUSE OF THE LOWER FOX RIVER LOCK-TENDER HOUSES AS VACATION RENTALS

Exterior restoration of eight of the lock houses on the Fox River took place in 2010 via federal funding. Three of the houses are now to be developed as vacation rentals with renovations to reflect the 1930s, right down to the kitchen and bathroom appliances. Renters will have the opportunity to serve as "lock tender for the day," assisting the regular lock tender on duty. They will walk the hard maple floors and view the river through the original divided-light windows—and come away with a deeper appreciation for the remarkable water transportation legacy of the historic Fox River. Presented by **Terry Laib**, CEO, Laib Restoration Inc., and **Candice Mortara**, president, Fox-Wisconsin Heritage Parkway

THE HISTORY AND PRESERVATION OF THE ELKHART LAKE HISTORIC OPEN ROAD RACE CIRCUITS

Learn about the history of the Village of Elkhart Lake and the circumstances that led to the organizing of the open road sports car races. This presentation will tell the story of the races held from 1950 to 1952 and the seven-year struggle to preserve the historic circuits in 2003–2010. Presented by **Spencer Chapple**, secretary, treasurer, and historian, Elkhart Lake Historic Race Circuits Preservation Society

ROBERT'S RULES OF ORDER

Many nonprofit boards or appointed commissions can run into trouble with meetings that stretch on for hours and lose focus on the agenda at hand. Learn how to successfully run efficient and productive meetings using Robert's Rules of Order, and avoid the common situations that can cause a meeting to go off track. Presented by **Ron Van de Hey**, former mayor of Kaukauna

BRINGING THE MUSEUM TO THE PEOPLE: THE DE PERE HISTORICAL SOCIETY PHOTO SHOW AS A TOOL OF COMMUNITY INVOLVEMENT

This presentation will detail how the De Pere Historical Society uses public photo shows to share archived photos with the community. Specifically, this presentation will illustrate how these programs have grown in scope and facilitation and have served as a catalyst for grassroots support. In addition, this presentation will demonstrate how these programs have become an invaluable tool for involving the public as direct participants in the preservation of our photographic history and have increased our public profile in the Brown County area and the state of Wisconsin. These improvements have, in turn, positively impacted membership and support of the organization. Presented by **Dr. Adam Stueck**, **Mary Kay Milquet**, **McKim Boyd**, and **Joe Seroogy**, De Pere Historical Society

FRIDAY WORKSHOPS: 9:15AM–12:00PM

WORD UP! HOW TO MAKE YOUR OWN PROFESSIONAL OBJECT LABELS

PREREGISTRATION REQUIRED: LIMIT 40

Jarrold Roll will share several simple methods for creating professional-quality labels without fancy equipment. He will also cover the basics of design (font size, layout, etc.), provide samples of various materials, and demonstrate how quality labels can be made in-house for a low cost. Presented by **Jarrold Roll**, director, Monroe County Local History Room and Museum

PASTPERFECT 5: TOOLS TO MAKE THE DATABASE WORK FOR YOU

PREREGISTRATION REQUIRED: LIMIT 25

Gain knowledge of advanced features of PastPerfect 5 that can help you manage your museum. We will cover artifact and archive cataloging, multimedia, working in the development tabs, performing searches, generating custom reports, re-indexing, and backing up data. We will also show you some examples of how you can use Virtual Exhibit and PastPerfect-Online to provide accessibility to your collections. Workshop is best suited to individuals with a basic familiarity with PastPerfect. Please bring your questions. Presented by **Sarah Kapellusch**, registrar, Wisconsin Veterans Museum, and **Pete Shrake**, archivist, Robert L. Parkinson Library and Research Center, Circus World

TACKLING THE CHALLENGES OF STORAGE

PREREGISTRATION REQUIRED: LIMIT 16

Not sure where to start with the storage of your collection? Does your library also function as your museum display space? Storage is often lacking and difficult to manage. This presentation will provide you with a greater understanding of the skills needed to articulate the need for space, especially when speaking to funders and administrators. It will also cover how to plan for multiple functions in the same space and what preservation issues you will encounter when planning for storage. Presented by **Sarah Hopley**, IMLS Connecting to Collections grant coordinator, Library-Archives, Wisconsin Historical Society, and **Katie Mullen**, preservation director, Library-Archives, Wisconsin Historical Society

ARCHIVES COLLECTING 101

PREREGISTRATION REQUIRED: LIMIT 30

This practical session will include some basic introductory background on archives and then focus on how to develop an archives collecting policy and plan, how to decide what to accept for your collection, how to work with potential donors, and how to legally transfer ownership of donated collections to your institution. Presented by **Jonathan Nelson**, collection development archivist, Wisconsin Historical Society

NO BUILDING PROJECT IS TOO SMALL FOR BIG IDEAS: AN ENVISIONING WORKSHOP

PREREGISTRATION REQUIRED: LIMIT 20

As a commissioner, you have questions about how you can improve the buildings in your downtown districts. As a building owner, you have questions about how you can improve your building. Whether it's simply repainting, replacing a window or door, or restoring the entire façade, it all starts with an idea and a conversation. During this session, we will provide technical assistance covering preservation issues and design alternatives to attendees to encourage the proper rehabilitation of their problematic historic downtown commercial buildings. Registered workshop attendees will be given instructions for submitting current and historic photos and a specific question or problem they would like discussed. Presented by **Jen Davel**, preservation architect, Wisconsin Historical Society, and **Jennifer L. Lehrke**, president, Legacy Architecture Inc.



FRIDAY WORKSHOPS

FRIDAY SPECIAL EVENTS

FRIDAY WORKSHOPS: 1:45–4:30PM

HISTORIC PRESERVATION PLANNING: IT'S ALL ABOUT THE FUTURE
PREREGISTRATION REQUIRED: LIMIT 30

This workshop will explore the approaches and methodologies used to write comprehensive plans for local government historic preservation programs. Presented by **Robert C. Vogel**, *principal and senior historian, Pathfinder CRM, LLC*

TEACHERS, STUDENTS, AND MUSEUMS: SUCCESSFUL PARTNERSHIPS BEGIN WITH YOU

PREREGISTRATION REQUIRED: LIMIT 20

Join museum professionals and volunteers as they present case studies of outreach programs that involve area educators, students, and local history. Working with state standards, school district budget constraints, retired teachers, and on- and off-site programming will be featured. After presentations, moderators will lead a discussion and brainstorming session to help you get the best results from your education program. Presented by **Wendy Lutzke**, *education curator, Wisconsin Maritime Museum*, **Dale Robson**, *education liaison, Sheboygan County Historical Museum*, **Jarrod Roll**, *director and county historian, Monroe County Local History Room and Museum*, and **Kathy Weberg**, *Richfield Historical Park*

COLLECTION CARE ON A BUDGET

PREREGISTRATION REQUIRED: LIMIT 24

Museums often have limited funds available for buying collection supplies, and it can be very challenging to determine the best way to care for your collection. This workshop will introduce attendees to a wide range of collections supplies and offer advice on how to get them on the cheap. We will also discuss when archival materials must be used and talk about how non-archival materials may be useful in caring for your collections. The workshop will include hands-on activities such as how to make your own padded hangers, storage mounts, and boxes. Presented by **Sarah Kapellusch**, *registrar, Wisconsin Veterans Museum*, and **Greg Krueger**, *curator of history, Wisconsin Veterans Museum*

PRESERVING PHOTOGRAPHS: THE BASICS

PREREGISTRATION REQUIRED: LIMIT 20

Worried about how to care for the photographs in your collections? This workshop will give you all the basic information you need about proper storage and safe handling of historic photographs. Confused about the difference between a tintype and a daguerreotype? Sally and Emil will describe many of the earliest photo processes, including some you may have never seen before. This workshop will include hands-on time with the Wisconsin Historical Society Archives' teaching lot of vintage photographs. Presented by **Sally Jacobs**, *McCormick and International Harvester Company Archivist* and **Emil Hoelter**, *processing archivist, Wisconsin Historical Society*

AN INTRODUCTION TO LEGAL ISSUES IN ARCHIVES

PREREGISTRATION REQUIRED: LIMIT 30

Working with historical records requires knowledge and awareness of copyright, access, and privacy, which are significant issues for today's archives. This workshop will introduce and explore these legal issues and discuss how to best make records available and help researchers, while respecting privacy rights and copyright. We will also touch briefly on how creating and using archival policies and procedures help archivists avoid legal headaches. Format will be presentation with short exercises to investigate what has been discussed, with time for Q&A. Presented by **Menzi Behrnd-Klodt**, *archivist/attorney, Klodt and Associates*

TASTE TRADITIONS OF WISCONSIN: A SPECIAL EVENING AT WADE HOUSE



YOU'RE INVITED TO AN EXCLUSIVE EVENING AT THE NEW WADE HOUSE VISITOR CENTER AND WESLEY W. JUNG CARRIAGE MUSEUM.

5:00 PM—CASH BAR AND SNACKS WHILE YOU EXPLORE THE VISITOR CENTER AND WESLEY W. JUNG CARRIAGE MUSEUM

6:30–8:00 PM—DINNER, DESSERT, AND SPECIAL PRESENTATION IN THE WALNUT ROOM

The festivities will start with a cash bar and light snacks in the new Visitor Center, which offers historic character with contemporary conveniences. You will have complete access to tour the new facility, which stands as a graceful gateway to Wade House historic site. The two-level, LEED-certified, 38,000-square-foot center will offer you fresh perspectives on 19th-century Wisconsin settlement, the world of plank-road stagecoach travel, and the broader realm of horse-drawn transportation that defined the work, travel, and leisure experiences of the state's residents during the 19th and early 20th centuries. The wonder of Wisconsin's largest collection of carriages and wagons awaits each visitor in the new, state-of-the-art 20,000-square-foot carriage museum. You can also try a complimentary horse-drawn ride around the grounds in a covered wagon or newly restored omnibus before dinner.

On the Menu:

Squash Soup and Bread

Roasted Pork Loin and Gravy with Red Cabbage and Apples, Wisconsin Russet Country Mashed Potatoes, and Glazed Carrots

Bread Pudding with Chocolate and Cranberries Topped with Brandy Sauce

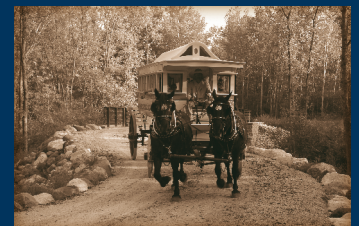
Complimentary Milk, Coffee, or Iced Tea, as well as Cash Bar throughout Dinner

Dessert Program: Victorians' Secrets: The Revealing History of Women's Underwear



Leslie Bellais, curator of social history at the Wisconsin Historical Society, will share the secret behind Victorians' tiny waists and will explore how women's undergarments reflected societal values. The presentation includes a slightly risqué PowerPoint presentation and a chance to see the layers under Ms. Bellais's 1858 reproduction dress.

Tickets are \$30 and must be purchased in advance with your conference registration. Tickets will not be available at the conference or at the event. Participants are responsible for their own transportation.



CONFERENCE AGENDA

SATURDAY, OCTOBER 25

SATURDAY REGISTRATION: 7:30 AM

SATURDAY MORNING: 8:00-9:00AM

COFFEE AND CONVERSATION – ROUNDTABLE DISCUSSIONS GRAND LIBELLE BALLROOM

Join your colleagues for breakfast while receiving direct advice from experts on a variety of subjects. (See handout in your packet for a full listing.)

SATURDAY MORNING: 9:15–10:25AM

HISTORIC PRESERVATION COMMISSIONER TRAINING—BEGINNER THE IMPORTANCE OF ARCHITECTURAL SURVEYS: HOW DO WE KNOW WHAT TO PRESERVE?

This introductory program is designed for communities that are either just starting a local historic preservation program or are trying to resurrect a stagnant one. It will discuss the components of architectural surveys and how they are used to become the foundation of an effective historic preservation program. Presented by **Joe De Rose**, *historian, Wisconsin Historical Society*

HISTORIC PRESERVATION COMMISSIONER TRAINING—ADVANCED HISTORIC PRESERVATION PLANNING: IT'S ALL ABOUT THE FUTURE

For Wisconsin cities and counties, historic preservation is essentially a planning function that integrates heritage conservation with other government planning for community development. Presented by **Robert Vogel**, *principal and senior historian, Pathfinder CRM, LLC*

HISTORICAL SOCIETY RECRUITMENT: HOW TO DEVELOP AND MANAGE AN INTERNSHIP PROGRAM

Want to start an internship program at your historical society but not sure where to begin? It's easier than you think! This presentation will walk you through the development of an internship program from start to finish, including application development, project identification, and basics in recruiting and selecting interns. Presented by **Brekke Feeley**, *director, Middleton Area Historical Society*, and **Jessica Contreras**, *former intern*

AZTALAN: WISCONSIN'S CITY OF MYSTERY

Aztalan is a large Native American village site located near Lake Mills that was occupied between A.D. 1100 and 1250. It is one of Wisconsin's most important archaeological sites. The site is surrounded by a stockade that encloses flat topped mounds that were used for burial and religious purposes as well as the remains of many houses and storage features. Come hear about the recent excavations by archaeologists from the University of Wisconsin-Milwaukee that have unearthed exciting new insights about this farming village. Presented by **Dr. John D. Richards**, **Thomas J. Zych**, and **Jennifer Picard**, *University of Wisconsin-Milwaukee*

PLANNED GIVING: STRENGTHENING THE FUTURE OF YOUR HISTORICAL SOCIETY

In this introduction to planned giving, learn how to set up such a program, the various vehicles that are available to make a planned gift, and how to market your program to your members. Presented by **Jeanne Engle**, *fundraising consultant, Jeanne Engle Enterprises*

SATURDAY MORNING 10:50–12:00 PM

HISTORIC PRESERVATION COMMISSIONER TRAINING—BEGINNER KNOW YOUR LOCAL PRESERVATION ORDINANCE

Historic preservation commissioners and local government officials need to know their local historic preservation ordinance and understand their role within local government to be most effective. This session will explore the creation and implementation of local historic preservation ordinances. Presented by **Chip Harry L. Brown III, J.D.**, *government assistance and training specialist, Wisconsin Historical Society*

HISTORIC PRESERVATION COMMISSIONER TRAINING—ADVANCED THE NEW AND IMPROVED WISCONSIN STATE TAX CREDIT

Have you heard? In 2013, the Wisconsin legislature passed a bill increasing the state "piggyback" to the federal rehabilitation tax credit from 10 to 20 percent. This means that owners of certified historic structures can now receive up to 40 percent of the eligible rehabilitation expenses back in the form of income tax credits (compared to 25–30 percent). Come learn more about this exciting change! Presented by **Mark Buechel** and **Jen Davel**, *preservation architects, Wisconsin Historical Society*

THE WISCONSIN IDEA IN ACTION: COLLECTIONS REHABILITATION PROJECTS AT THE PULASKI AND BRILLION HISTORICAL SOCIETIES

The University of Wisconsin–Madison's overarching "Wisconsin Idea" guides many aspects of campus education and service. First articulated by Charles Van Hise in 1904, the basic tenet of the Wisconsin Idea is that the "boundaries of the University are the boundaries of the state." Using expertise from the university, UW faculty and staff are encouraged to work together with local communities in developing public service projects in meaningful ways. This presentation will provide an overview of two collaborative projects between the Department of Anthropology and the Pulaski and Brillion Historical Societies, shining a light on positive ways to further local area historical societies' abilities to maintain their important collections. Presented by **Danielle Benden**, *senior curator of anthropology*, and **Emma Noffsinger**, *anthropology student, University of Wisconsin–Madison Department of Anthropology*

KEEPING YOUR AUDIENCE IN THE LOOP: LEARN HOW!

This session will demonstrate how to communicate the unique and valuable offerings of your institution to your existing and potential audience. A case study about the addition of a new visitor center and carriage museum to Wade House historic site will provide new ideas to help effectively market and advertise exhibits, public programs, and facility rentals. Hear about marketing practices such as billboard campaigns, print and online advertising, social media plans and content calendars, as well as public relations efforts. Presented by **Bridgett Zielke**, *manager of marketing, public programs, and event services, Wade House Historic Site*

MAKING HISTORY HAPPEN: THE WISCONSIN HUMANITIES COUNCIL GRANT PROGRAM

The Wisconsin Humanities Council (WHC) supports and creates programs that use history, culture, and conversation to strengthen community life for everyone in Wisconsin. Each year, the WHC makes grants to organizations across the state, including many community-based historical societies and museums. This presentation introduces the WHC and specifically orients potential applicants to the WHC grant program. We describe the kinds of grants the WHC offers, outline eligibility requirements, highlight model projects, and offer suggestions for developing a competitive proposal. Presented by **Mark Livengood**, *grant program director and northern Wisconsin representative, Wisconsin Humanities Council*, and **Kathy Laakso**, *northern representative, Wisconsin Humanities Council and director of programs for Douglas County Historical Society*



SATURDAY WORKSHOPS

SATURDAY WORKSHOPS: 9:15AM–12:00PM

MAKE YOUR OWN PRESERVATION ADVOCACY HANDBOOK

PREREGISTRATION REQUIRED: LIMIT 30

Want to save a local landmark? Interested in starting or retooling your historical society's advocacy program? Learn what you need to create your own preservation advocacy handbook! WHS Advocacy Module writer Heather MacIntosh will walk you through the essential elements of a successful grassroots advocacy campaign. This session expands on the WHS's online advocacy content. Participants will learn important tools for navigating local press relations, government relations, partnerships, and other key elements of preservation advocacy. By the end of this session, each participant will leave with advocacy strategies, key contact information, and a personalized task list. Presented by **Heather MacIntosh**, *preservation writer*

PAPERS, PICTURES, AND PATRONS: THE BASICS OF MANAGING AN ARCHIVES

PREREGISTRATION REQUIRED: LIMIT 30

Letters, diaries, photographs, and scrapbooks galore—what do we do with all of this and more! This session will explore the steps needed to take archival collections from unorganized donations and get those materials into the hands of your researchers and patrons. Participants will learn the basic steps needed to organize and catalogue archival collections, as well as the basics of providing quality reference services. This is a new 2014 workshop, designed to engage participants through hands-on activities and opportunities to have your questions answered. Let us show you how your archival collections can become an integral part of your organization! Presented by **Greg Kocken**, *head special collections librarian, McIntyre Library, UW–Eau Claire*, and **Pete Shrake**, *archivist, Robert L. Parkinson Library and Research Center, Circus World*

RE-VISIONING THE WHITEWATER HISTORICAL SOCIETY'S LOCAL HISTORY MUSEUM

PREREGISTRATION REQUIRED: LIMIT 30

In 2012, the Whitewater Historical Society's Depot Museum building underwent extensive restoration. The multiyear project restored the Depot Museum exterior and rehabilitated the interior to better accommodate the depot's adaptive reuse as a museum. The restoration project inspired improvements in collections management and re-visioning sessions on how Whitewater history will be interpreted in the renovated galleries. It also launched an extensive community outreach program that involved fundraising, branding opportunities, public relations efforts, and creative programming. The presenters will explain how the society used the restoration project to its greatest advantage, creating a turning point in the history of the Whitewater Historical Society and its relationship to the Whitewater community. Presented by **Carol Cartwright**, *Depot Museum curator*, **Ellen Penwell**, *president*, and **Linda Robinson**, *board member, Whitewater Historical Society*

COLLECTION MANAGEMENT POLICIES FOR THE SMALL MUSEUM

PREREGISTRATION REQUIRED: LIMIT 30

The keystone for any collection is the Collections Management Policy. It defines what and how an organization collects and how items are removed from collections. This hands-on workshop will address the most important aspects of a policy and have participants create a first draft to take back to their museum or historical society. Participants need to bring a copy of their organization's mission statement and current collections management policy and a laptop or iPad or paper and pen. Presented by **Ann Koski**, *museum consultant*

ORAL HISTORY, NOW; OR, AN ORAL HISTORY WORKSHOP FOR THE DIGITAL AGE

PREREGISTRATION REQUIRED: LIMIT 24

Troy Reeves will offer a stimulating and informative overview of oral history in the digital age, from initial idea through finished product. The workshop will cover specifics within three subcategories of oral history: collecting, curating, and communicating, including project planning, technology, funding, questions and follow-up questions, release forms, index or transcript, publication, and any other topic of interest to the attendees. Presented by **Troy Reeves**, *head of the Oral History Program, University of Wisconsin–Madison*

SATURDAY LUNCHEON

SATURDAY LUNCHEON:

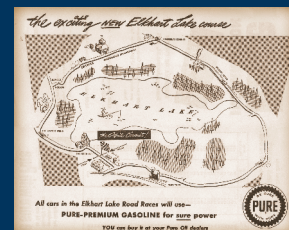
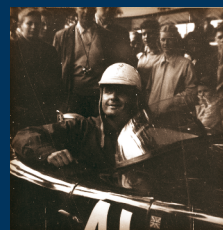
12:15–1:30PM

GRAND LIBELLE BALLROOM

Michael Perry is a *New York Times* bestselling author, humorist and radio show host from New Auburn, Wisconsin. Perry's bestselling memoirs include *Population 485*, *Truck: A Love Story*, *Coop*, and *Visiting Tom*. Raised on a small Midwestern dairy farm, Perry put himself through nursing school while working on a ranch in Wyoming, then wound up writing by happy accident. He lives with his wife and two daughters in rural Wisconsin, where he serves on the local volunteer fire and rescue service and is an amateur pig farmer. He hosts the nationally syndicated Tent Show Radio.



Mike's stories and humor will shed light on what it means to be part of a community, with common history, experiences, and a shared sense of place. He is recognized as an authentic Midwestern voice that is open and honest about this place we call home.



SATURDAY AFTERNOON: 1:45–2:55PM

HISTORIC PRESERVATION COMMISSIONER TRAINING—BEGINNER STATE AND FEDERAL HISTORIC PRESERVATION LAW

Historic preservation commissioners and local government officials can benefit by understanding state and federal historic preservation laws and regulations. This workshop explores the local preservation commissioner's and local government official's roles in the major state and federal historic preservation review processes. Presented by **Chip Harry L. Brown III, J.D.**, *government assistance and training specialist, Wisconsin Historical Society*

HISTORIC PRESERVATION COMMISSIONER TRAINING—ADVANCED HISTORIC PRESERVATION COMMISSION CASE STUDIES

Hear from the chairs of the Watertown and Oregon Historic Preservation Commissions about the accomplishments they achieved and the challenges they faced, in particular the enactment of ordinances to help prevent "demolition by neglect." Presented by **Melissa Lampe**, *chair, Watertown Historic Preservation Commission*, and **Arlan Kay**, *chair, Oregon Historic Preservation Commission*

HISTORIC PRESERVATION INTERNSHIPS

A discussion of the mutual benefits for institutions and students of using internships in non-profit advocacy organizations and certified local governments. Presented by **Dr. John Mann**, *University of Wisconsin–Eau Claire*, and **Matthew Honer**, *graduate history student, University of Wisconsin–Eau Claire*

SATURDAY AFTERNOON: 3:20–4:30PM

HISTORIC PRESERVATION COMMISSIONER TRAINING—BEGINNER LEARN THE BASICS OF THE NATIONAL REGISTER OF HISTORIC PLACES

If you have heard about the National Register of Historic Places, but are not quite sure what it is, this session is for you. You will learn what the program is, understand program terminology, and discover how the program differs from local landmark designation. You will also discover the ways in which understanding the NR program can help you in your role as a local historic preservation commissioner. Not on a local commission? That's okay—all are welcome! Presented by **Peggy Veregin**, *National Register coordinator, Wisconsin Historical Society*

HISTORIC PRESERVATION COMMISSIONER TRAINING—ADVANCED TOP TEN ADVOCACY TIPS FOR COMMISSIONERS

In this session, learn strategies for cultivating the best environment for historic preservation success—without regulatory controls. Based on interviews with preservation commissioners throughout the country, this session will help you understand how to build on your strengths and interests as you grow in your public role as a local commissioner. This discussion will address both proactive and reactive advocacy strategies. Presented by **Heather MacIntosh**, *preservation writer*

WHAT DOES IT TAKE? A FRANK JOB-SEEKING BOOTCAMP FOR COLLEGE STUDENTS

How do you get that first job working in history? Learn about the use and purpose of various tools needed to capture that first job. This session will also foster a network that you can use for support. Presented by **David Grabitske**, *manager of outreach services*, and **Ben Leonard**, *manager of community outreach and partnerships, Minnesota Historical Society*

GUIDED TOURS OF THE HERMAN C. TIMM HOUSE AND THE PIONEER CORNER MUSEUM, NEW HOLSTEIN

Tours will be conducted by the New Holstein Historical Society. Participants are responsible for their own transportation. Tours are \$7 per person payable to the New Holstein Historical Society on-site.



See firsthand what *Period Magazine* called one of the country's best preserved examples of Stick Style architecture. In 1873, Herbert C. Timm built a Greek Revival house for his family, then lavishly upgraded it in 1892 with a grand Stick Style front addition. The exterior and interior feature extraordinary woodwork and stained glass that has been expertly restored. On the tour, you'll learn from those who were involved in the restoration and the skilled fundraising that made this award-winning restoration

possible. The historic structures report and portions of the \$1.5 million restoration were funded in large part by the Jeffris Family Foundation. You'll also visit the Pioneer Corner Museum, which houses a variety of collections that highlight the history of New Holstein and its surrounding areas.

EXPLORE WADE HOUSE

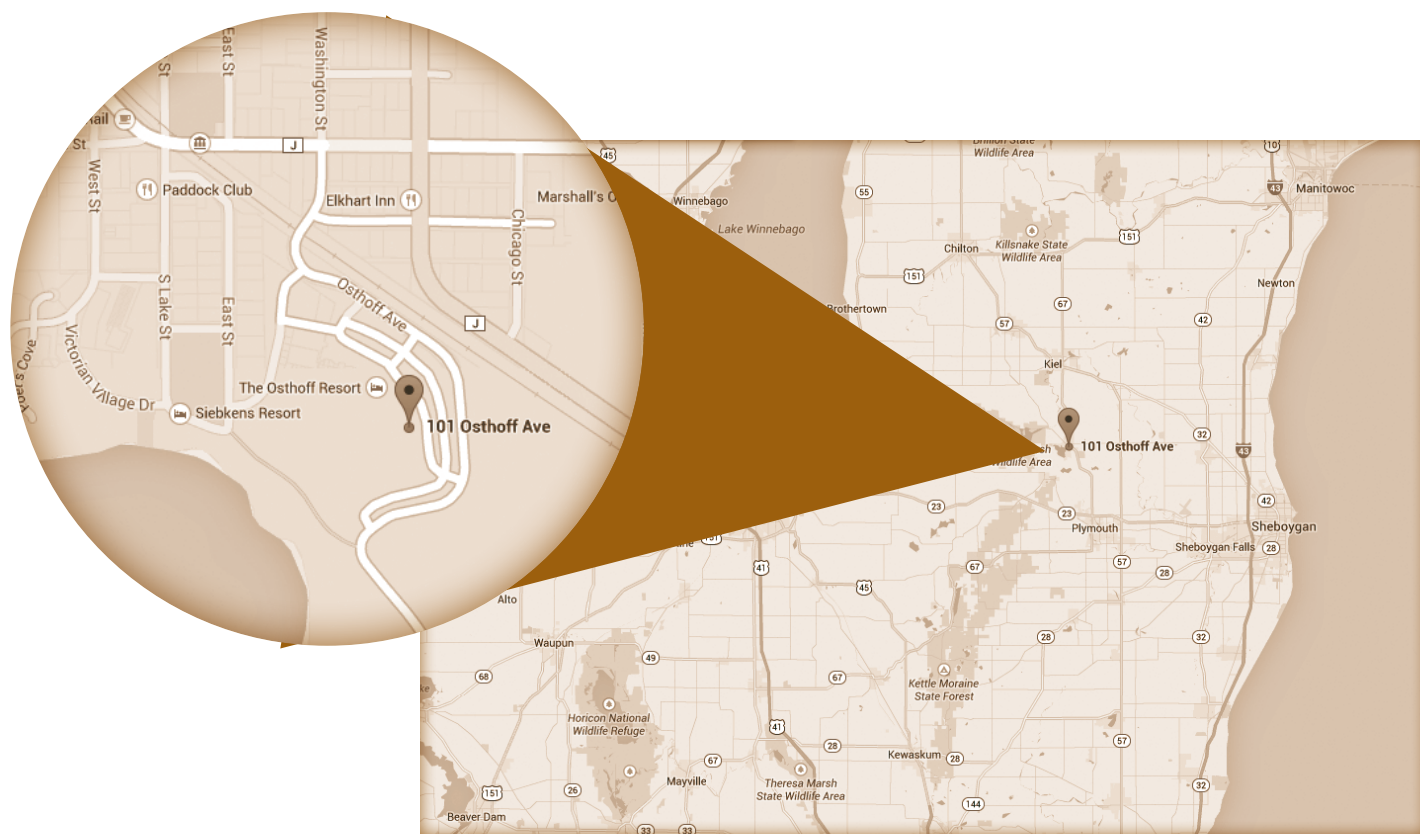
Tour is free but requires preregistration. Participants are responsible for their own transportation.

Return to the time of stagecoach travel and see a community where Yankee refinement met the Wisconsin wilderness. Your visit to Wade House's historic area will include a guided tour of a stately, 27-room stagecoach hotel, the rumble of an up-and-down saw, the ring of the blacksmith's anvil, and the delight of an old-fashioned horse-drawn wagon ride. Enjoy hot apple cider in the kitchen.



HOTEL AND RATES

HOTEL INFORMATION



THE OSTHOFF RESORT & CONFERENCE CENTER <http://www.osthoff.com/>

101 Osthoff Ave, Elkhart Lake, WI 53020 • (855) 876-3399

HOTEL RESERVATIONS

A block of rooms has been reserved for the conference. Please make hotel reservation at (855) 876-3399 or 1-800-876-3399 and mention the Wisconsin Historical Society Conference to get the conference/state rate. A limited number of rooms are available at a discounted rate of \$70 for a single room and \$90 for a double room. **Please make reservations early for the discount since there are a limited number of rooms at this rate. Rooms will not be available at the discounted rate after September 30 or if they are filled.**

RATES

REGISTER EARLY & SAVE!

Register by September 5 and save \$20
FINAL DEADLINE TO REGISTER – October 10

EARLY-BIRD TWO-DAY REGISTRATION FEE \$105,
PAYABLE BEFORE SEPTEMBER 5, 2014

EARLY-BIRD ONE DAY REGISTRATION FEE \$60,
PAYABLE BEFORE SEPTEMBER 5, 2014

REGULAR TWO-DAY REGISTRATION FEE \$125,
PAYABLE BEFORE OCTOBER 10, 2014

REGULAR ONE DAY REGISTRATION FEE \$65,
PAYABLE BEFORE OCTOBER 10, 2014

STUDENT TWO DAY REGISTRATION FEE \$60,
PAYABLE BEFORE OCTOBER 10, 2014

STUDENT ONE DAY REGISTRATION FEE \$35 ,
PAYABLE BEFORE OCTOBER 10, 2014

The registration fee includes morning refreshments, lunches, and all sessions and workshops.

Please note that your registration entitles you to attend any open session, but workshop space is limited and requires advance registration as do optional events and tours.

OPTIONAL ACTIVITIES

Please indicate on your registration form if you plan to attend.

FRIDAY

A SPECIAL EVENING AT WADE HOUSE DINNER & PRESENTATION
5:00-8:00 PM
(Advanced registration is required), \$30

SATURDAY

TOUR OF THE HERMAN C. TIMM HOUSE AND THE PIONEER CORNER MUSEUM, NEW HOLSTEIN

2:30 PM

Tours will be conducted by the New Holstein Historical Society. Participants are responsible for their own transportation. Tours are \$7 per person payable on site

WADE HOUSE GUIDED TOUR

2:30 PM

Participants are responsible for their own transportation. Tours are free but pre-registration is required.

FOR MORE INFORMATION

Contact Amy Norlin at 608-264-6579
or amy.norlin@wisconsinhistory.org

REGISTRATION FORM

**ALL REGISTRATIONS MUST BE PREPAID BY CHECK OR CREDIT CARD
POSTMARKED BY OCTOBER 10, 2014
ONE REGISTRATION FORM PER PERSON**

Name and Organization _____

Address, City, State, Zip _____

Telephone, Email _____

**PAYMENT INFORMATION: ALL REGISTRATIONS MUST
BE PREPAID
BY CHECK OR CREDIT CARD POSTMARKED BY
OCTOBER 10, 2014**

EARLY BIRD REGISTRATION BY SEPTEMBER 5

- FRIDAY AND SATURDAY \$105
 ONE DAY ONLY \$60

**REGULAR REGISTRATION
AFTER SEPTEMBER 5 AND PRIOR TO OCTOBER 10**

- FRIDAY AND SATURDAY \$125
 ONE DAY ONLY \$65

SPECIAL STUDENT RATES – INCLUDE COPY OF VALID STUDENT ID

- FRIDAY AND SATURDAY \$60
 ONE DAY ONLY \$35

REGISTRATION AMOUNT DUE: _____

OPTIONAL ACTIVITIES:

- A SPECIAL EVENING AT WADE HOUSE DINNER & PRESENTATION
SEPARATE PAYMENT REQUIRED. LIMIT 150
_____ X \$30
- TIMM HOUSE & PIONEER CORNER MUSEUM TOUR, 2:30 PM
NEW HOLSTEIN
PAY AT SITE
- WADE HOUSE GUIDED TOUR, SATURDAY, 2:30 PM (LIMIT 60)
NO CHARGE
- ACTIVITY AMOUNT DUE:** _____

**NOTE THAT SEPARATE CHECKS ARE REQUIRED FOR REGISTRATION
AND WADE HOUSE DINNER**

IN ADDITION TO OPEN SESSIONS,
I WOULD LIKE TO ATTEND THE FOLLOWING WORKSHOPS:
Space is limited for each workshop, please call 608-264-6579 for availability:

FRIDAY: 9:15AM-12:00PM

- Word Up! How to Make Your Own Professional Object Labels
– limit 30 participants
- PastPerfect 5: Tools to Make the Database Work for You
– limit 25 participants
- Tackling the Challenges of Storage – limit 16 participants
- Archives Collecting 101 – limit 30 participants
- No Building Project is Too Small for Big Ideas: An Envisioning Workshop
– limit 20 participants

FRIDAY: 1:45-4:30PM

- Historic Preservation Planning: It's all About the Future
– limit 30 participants
- Teachers, Students, and Museums: Successful Partnerships Begin with You
– limit 30 participants
- Collection Care on a Budget – limit 24 participants
- Preserving Photographs: The Basics – limit 20 participants
- An Introduction to Legal Issues in Archives – limit 30 participants

SATURDAY: 9:15AM-12:00PM

- Make Your Own Preservation Advocacy Handbook – limit 30 participants
- Papers, Pictures and Patrons: The Basics of Managing an Archives
– limit 30 participants
- Re-visioning the Whitewater Historical Society's Local History Museum
– limit 30 participants
- Collection Management Policies – limit 30 participants
- Oral History, Now. Or, an Oral History Workshop for the Digital Age
– limit 24 participants

PAYMENT METHODS: ALL REGISTRATIONS MUST BE PRE-PAID BY OCTOBER 10, 2014

- CHECK (MAKE PAYABLE TO WISCONSIN HISTORICAL FOUNDATION)
NOTE: SEPARATE CHECKS REQUIRED FOR WADE HOUSE DINNER AND REGISTRATION
- VISA MASTERCARD

Card Number _____ Security Code _____ Exp Date _____

Signature _____

SEND YOUR COMPLETED REGISTRATION FORM & PAYMENTS BY OCTOBER 10, 2014 TO:
WISCONSIN HISTORICAL SOCIETY • ATTN: AMY NORLIN • 816 STATE STREET • MADISON WI 53706



WISCONSIN
HISTORICAL
SOCIETY

Eighth Annual
Local History
and
Historic
Preservation
Conference

ELKHART LAKE, WI • THE OSTHOFF RESORT AND CONFERENCE CENTER

816 State Street, Madison WI 53706

NON-PROFIT ORG
U.S. POSTAGE
PAID
MADISON WI
PERMIT NO. 430

WISCONSIN
COUNCIL FOR
Local History



Elkhart Lake, Wisconsin
The Osthoff Resort and Conference Center
OCTOBER 24-25, 2014

Conference

Local History
and
Historic
Preservation

Eighth Annual

Local History
and
Historic
Preservation



WISCONSIN
HISTORICAL
SOCIETY