

# HOW WE SERVE YOUR DISTRICT

Society resources used in Wisconsin's  
**SENATE DISTRICT 1**  
**ASSEMBLY DISTRICTS 1-3**

- Local Affiliates
- Virtual Services
- ◆ School Services



WISCONSIN  
 HISTORICAL  
 SOCIETY



Sources:  
 Wisconsin Historical Society,  
 ESRI (2021)

7

Organizations represented at the virtual  
 Wisconsin Local History Conference

20

Local History Affiliates served

11,575

Wisconsin Historical Society  
 website sessions

18

School districts used the Society's  
 4th-grade Wisconsin history textbook or  
 visited a museum virtually

1,931

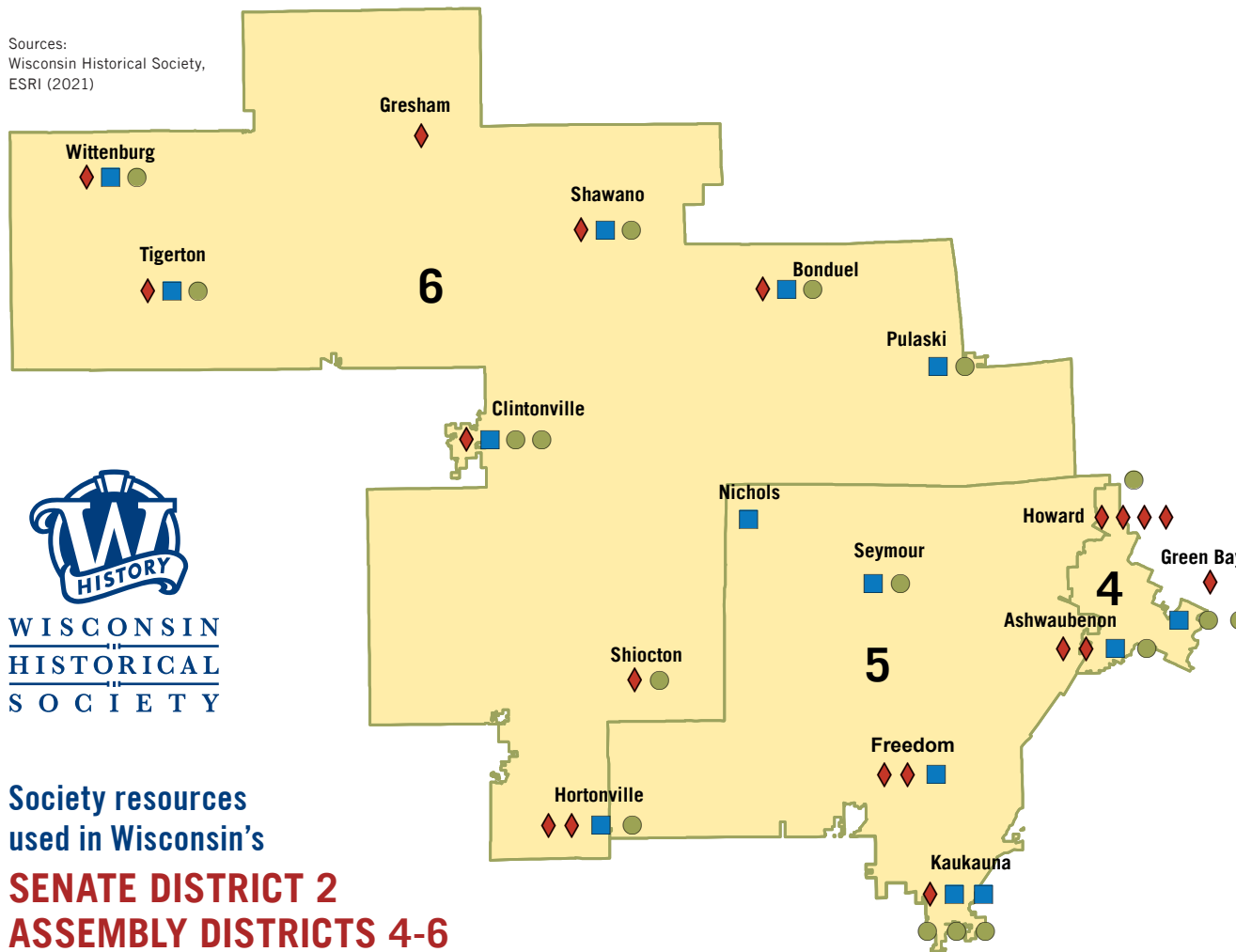
Students used the Society's  
 4th-grade Wisconsin history textbook or  
 visited a museum virtually

SCHOOL SERVICES

Due to the COVID-19 pandemic, in-person school visits and programming at the Society's 12 historic sites and museums were temporarily paused, with National History Day and some other programs pivoting to a virtual format. Most operations and outreach services are expected to return to normal service in 2022. This map shows virtual services (website sessions, Local History and Historic Preservation Conference participation) and school services (textbook use, virtual school visits, virtual National History Day participation) delivered July 1, 2020 – June 30, 2021.

# HOW WE SERVE YOUR DISTRICT

Sources:  
Wisconsin Historical Society,  
ESRI (2021)



WISCONSIN  
HISTORICAL  
SOCIETY

Society resources  
used in Wisconsin's

**SENATE DISTRICT 2**  
**ASSEMBLY DISTRICTS 4-6**

- Local Affiliates
- School Services Participants
- ◆ Schools Visiting Museums or Historic Sites

**14**  
Local History  
Affiliates served

**15,060**  
Wisconsin Historical Society  
website sessions

**18**  
School districts used the Society's  
4th-grade Wisconsin history textbook,  
participated in National History  
Day or visited a museum virtually

**1,316**  
Students used the Society's 4th-  
grade Wisconsin history textbook,  
participated in National History Day,  
or visited a museum virtually

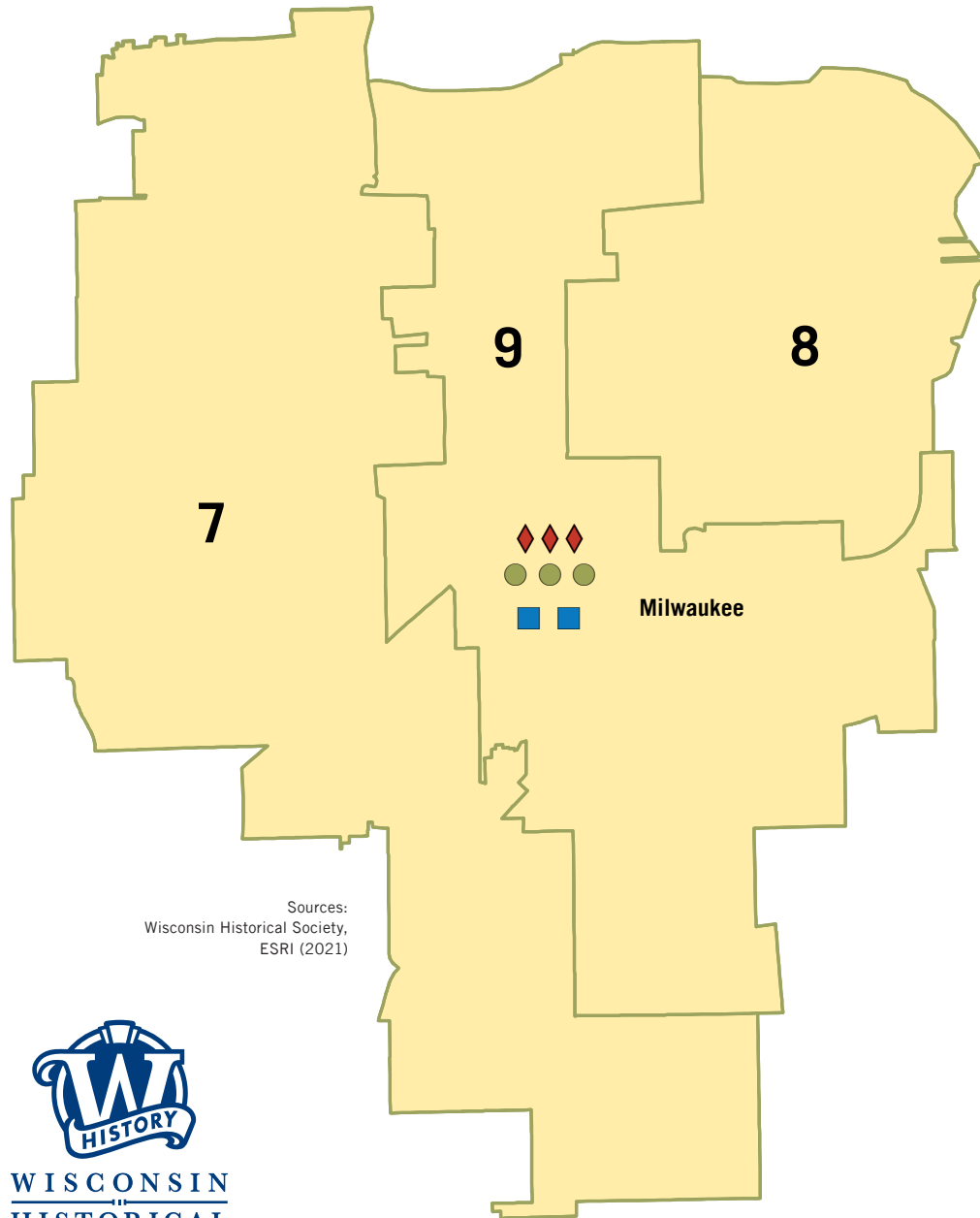
SCHOOL SERVICES

Due to the COVID-19 pandemic, in-person school visits and programming at the Society's 12 historic sites and museums were temporarily paused, with National History Day and some other programs pivoting to a virtual format. Most operations and outreach services are expected to return to normal service in 2022. This map shows virtual services (website sessions, Local History and Historic Preservation Conference participation) and school services (textbook use, virtual school visits, virtual National History Day participation) delivered July 1, 2020 – June 30, 2021.

# HOW WE SERVE YOUR DISTRICT

Society resources used in Wisconsin's  
**SENATE DISTRICT 3**  
**ASSEMBLY DISTRICTS 7-9**

- Local Affiliates
- School Services Participants
- ◆ Schools Visiting Museums or Historic Sites



Sources:  
Wisconsin Historical Society,  
ESRI (2021)



WISCONSIN  
HISTORICAL  
SOCIETY

2

Local History Affiliates served

74,095

Wisconsin Historical Society website sessions

SCHOOL SERVICES

1,851

Students used the Society's 4th-grade Wisconsin history textbook, participated in National History Day, or visited a museum virtually

Due to the COVID-19 pandemic, in-person school visits and programming at the Society's 12 historic sites and museums were temporarily paused, with National History Day and some other programs pivoting to a virtual format. Most operations and outreach services are expected to return to normal service in 2022. This map shows virtual services (website sessions, Local History and Historic Preservation Conference participation) and school services (textbook use, virtual school visits, virtual National History Day participation) delivered July 1, 2020 – June 30, 2021.

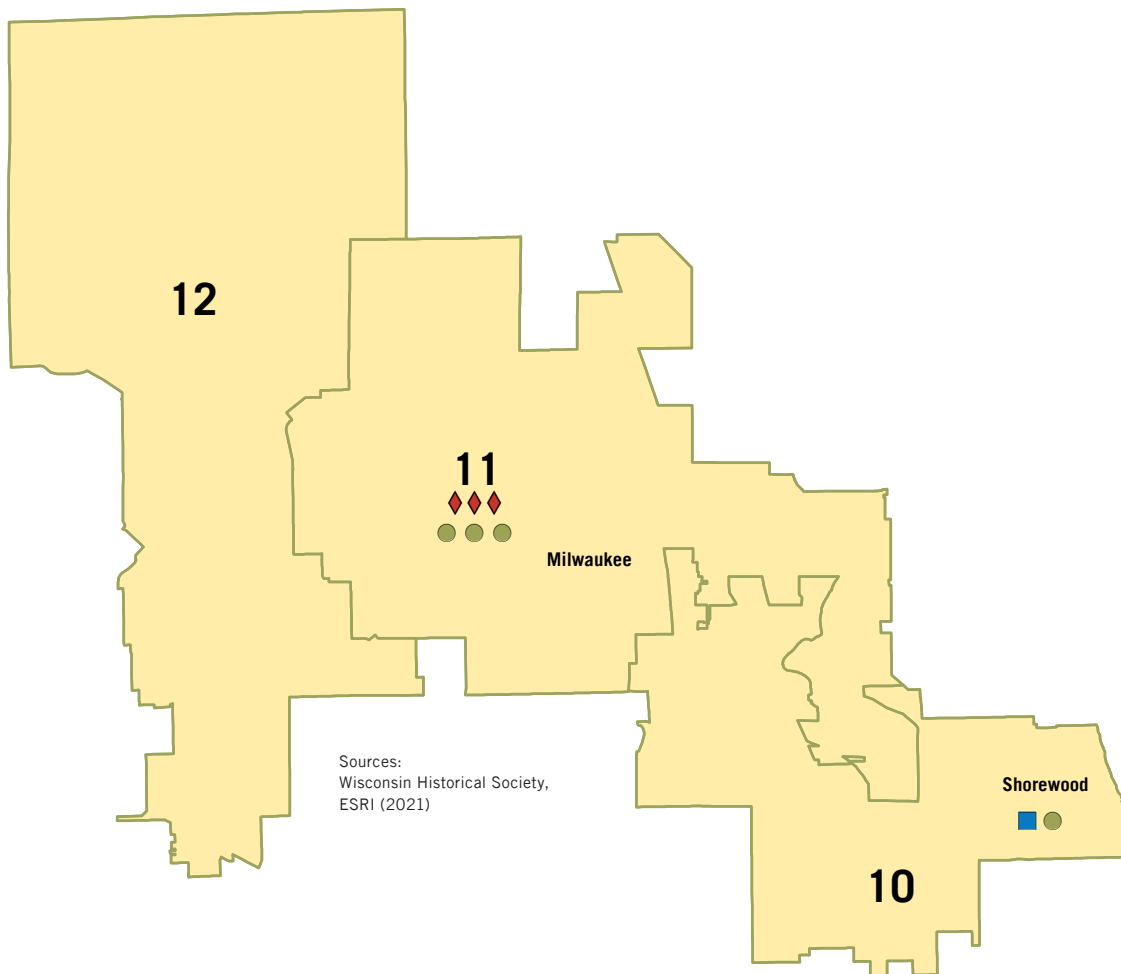
# HOW WE SERVE YOUR DISTRICT



WISCONSIN  
HISTORICAL  
SOCIETY

Society resources used in Wisconsin's  
**SENATE DISTRICT 4**  
**ASSEMBLY DISTRICTS 10-12**

- Local Affiliates
- School Services Participants
- Schools Visiting Museums or Historic Sites



1

Local History  
Affiliates served

71,000

Wisconsin Historical Society  
website sessions

1,852

Students used the Society's  
4th-grade Wisconsin history textbook,  
participated in National History Day,  
or visited a museum virtually

SCHOOL SERVICES

Due to the COVID-19 pandemic, in-person school visits and programming at the Society's 12 historic sites and museums were temporarily paused, with National History Day and some other programs pivoting to a virtual format. Most operations and outreach services are expected to return to normal service in 2022. This map shows virtual services (website sessions, Local History and Historic Preservation Conference participation) and school services (textbook use, virtual school visits, virtual National History Day participation) delivered July 1, 2020 – June 30, 2021.

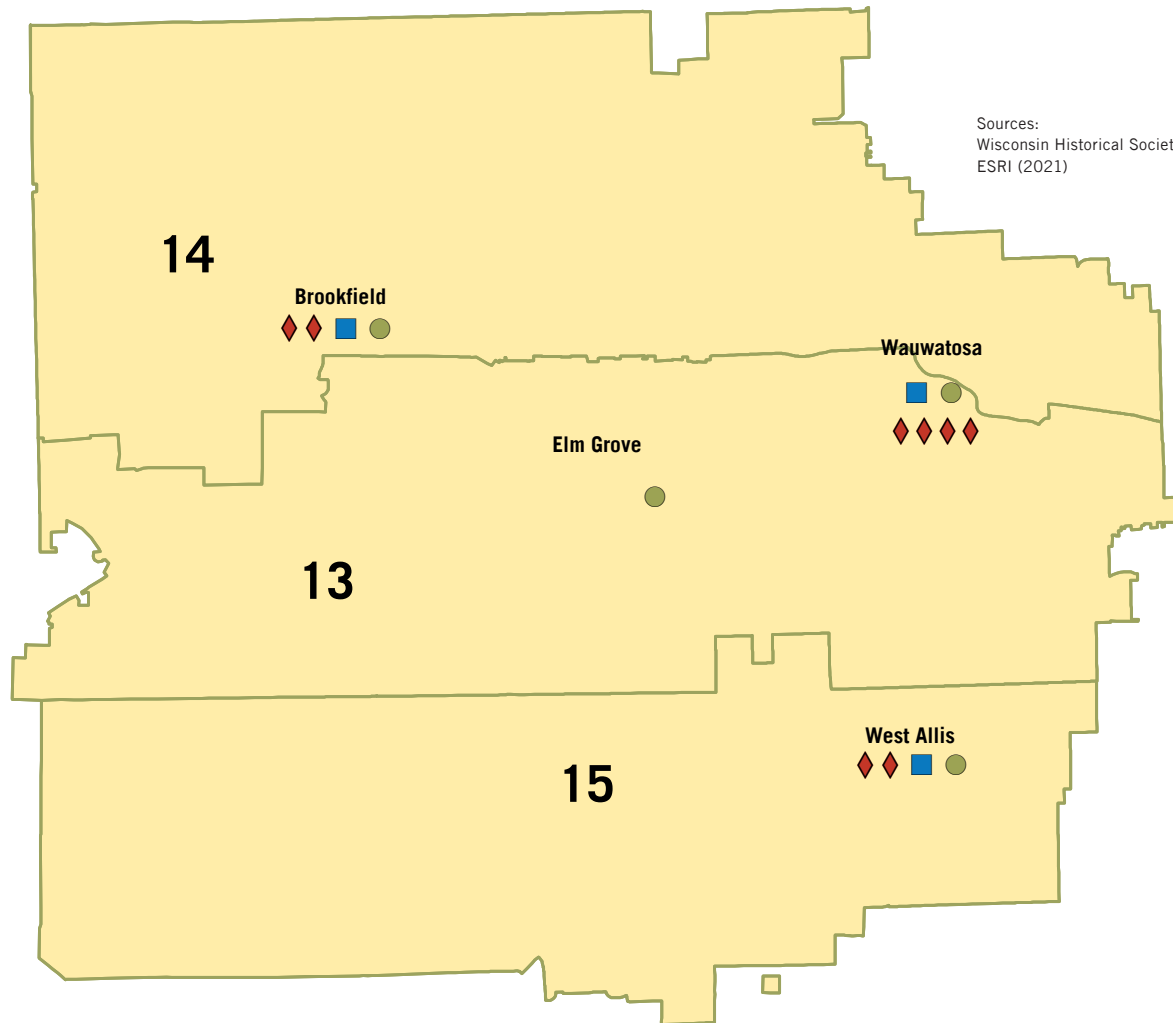
# HOW WE SERVE YOUR DISTRICT



WISCONSIN  
HISTORICAL  
SOCIETY

Society resources used in Wisconsin's  
**SENATE DISTRICT 5**  
**ASSEMBLY DISTRICTS 13-15**

- Local Affiliates
- School Services Participants
- ◆ Schools Visiting Museums or Historic Sites



**3**

Society Affiliates are located in this district

**33,017**

Wisconsin Historical Society website sessions

**1,150**

Students used the Society's 4th-grade Wisconsin history textbook, or visited a museum virtually

SCHOOL SERVICES

Due to the COVID-19 pandemic, in-person school visits and programming at the Society's 12 historic sites and museums were temporarily paused, with National History Day and some other programs pivoting to a virtual format. Most operations and outreach services are expected to return to normal service in 2022. This map shows virtual services (website sessions, Local History and Historic Preservation Conference participation) and school services (textbook use, virtual school visits, virtual National History Day participation) delivered July 1, 2020 – June 30, 2021.

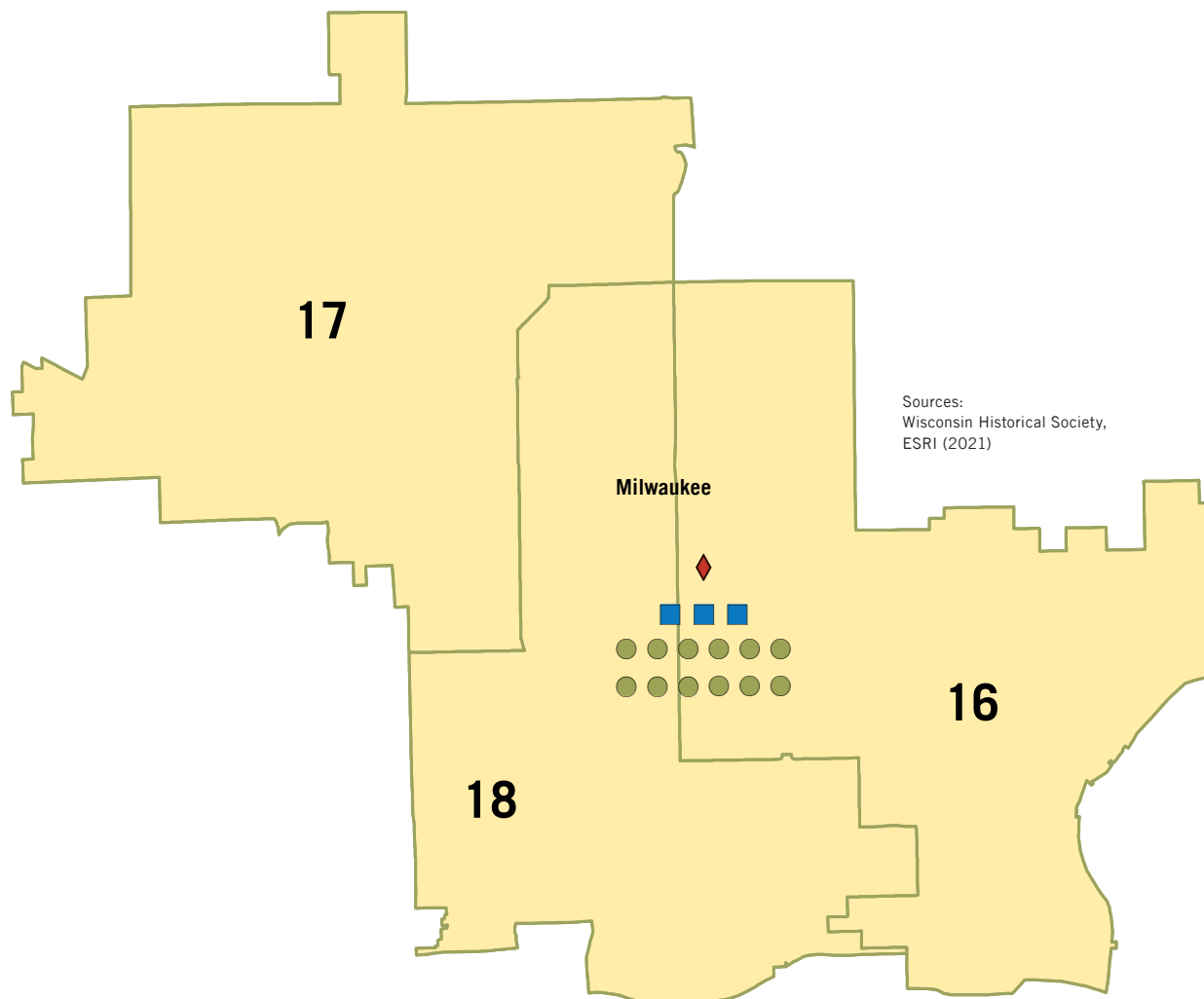
# HOW WE SERVE YOUR DISTRICT



WISCONSIN  
HISTORICAL  
SOCIETY

Society resources used in Wisconsin's  
**SENATE DISTRICT 6**  
**ASSEMBLY DISTRICTS 16-18**

- Local Affiliates
- School Services Participants
- ◆ Schools Visiting Museums or Historic Sites



3

Local History  
Affiliates served

7

Organizations represented at the virtual  
Wisconsin Local History Conference

74,000

Wisconsin Historical Society  
website sessions

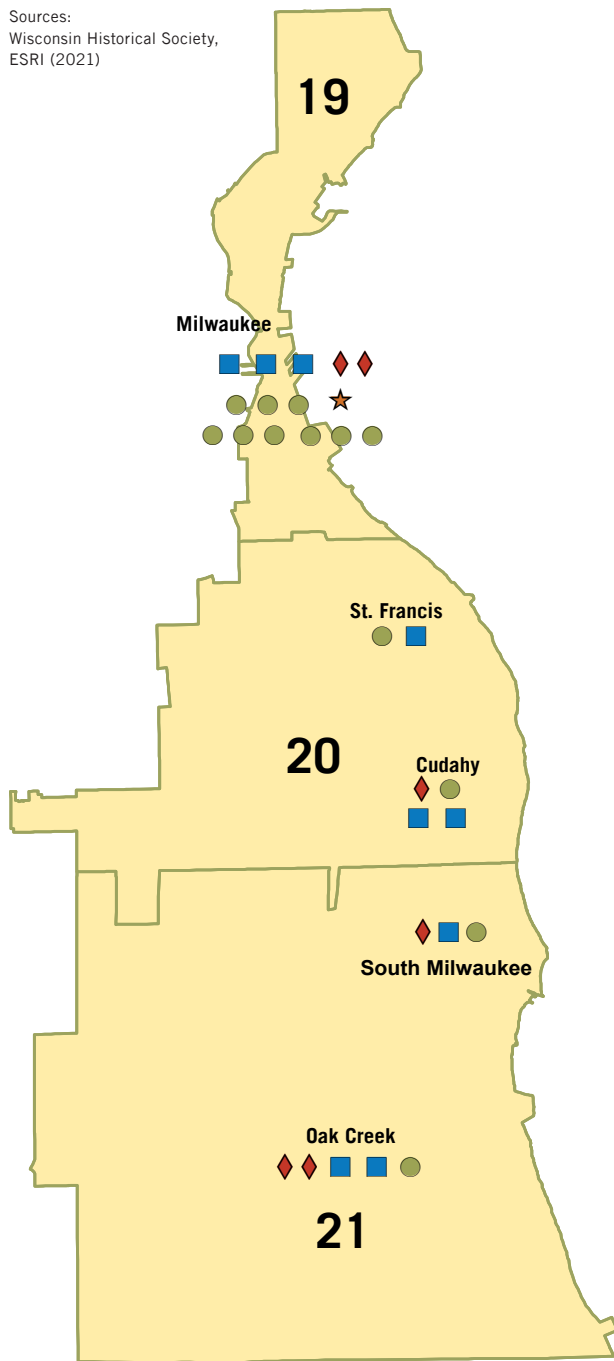
SCHOOL SERVICES

1,852

Students used the Society's 4th-grade Wisconsin  
history textbook, participated in National  
History Day, or visited a museum virtually

Due to the COVID-19 pandemic, in-person school visits and programming at the Society's 12 historic sites and museums were temporarily paused, with National History Day and some other programs pivoting to a virtual format. Most operations and outreach services are expected to return to normal service in 2022. This map shows virtual services (website sessions, Local History and Historic Preservation Conference participation) and school services (textbook use, virtual school visits, virtual National History Day participation) delivered July 1, 2020 – June 30, 2021.

Sources:  
Wisconsin Historical Society,  
ESRI (2021)



# HOW WE SERVE YOUR DISTRICT

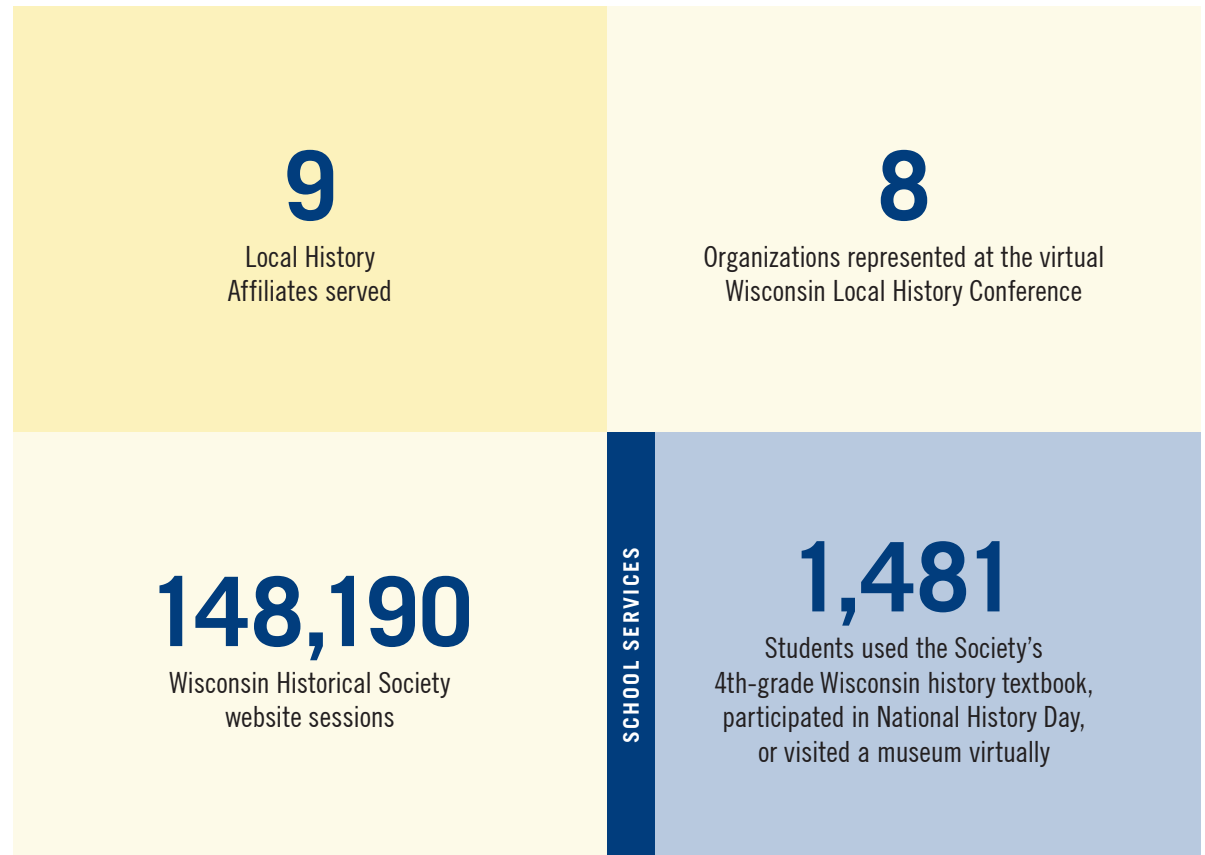


WISCONSIN  
HISTORICAL  
SOCIETY

Society resources used in Wisconsin's

**SENATE DISTRICT 7 | ASSEMBLY DISTRICTS 19-21**

- Local Affiliates
- School Services Participants
- ★ Area Research Center
- ◆ Schools Visiting Museums or Historic Sites

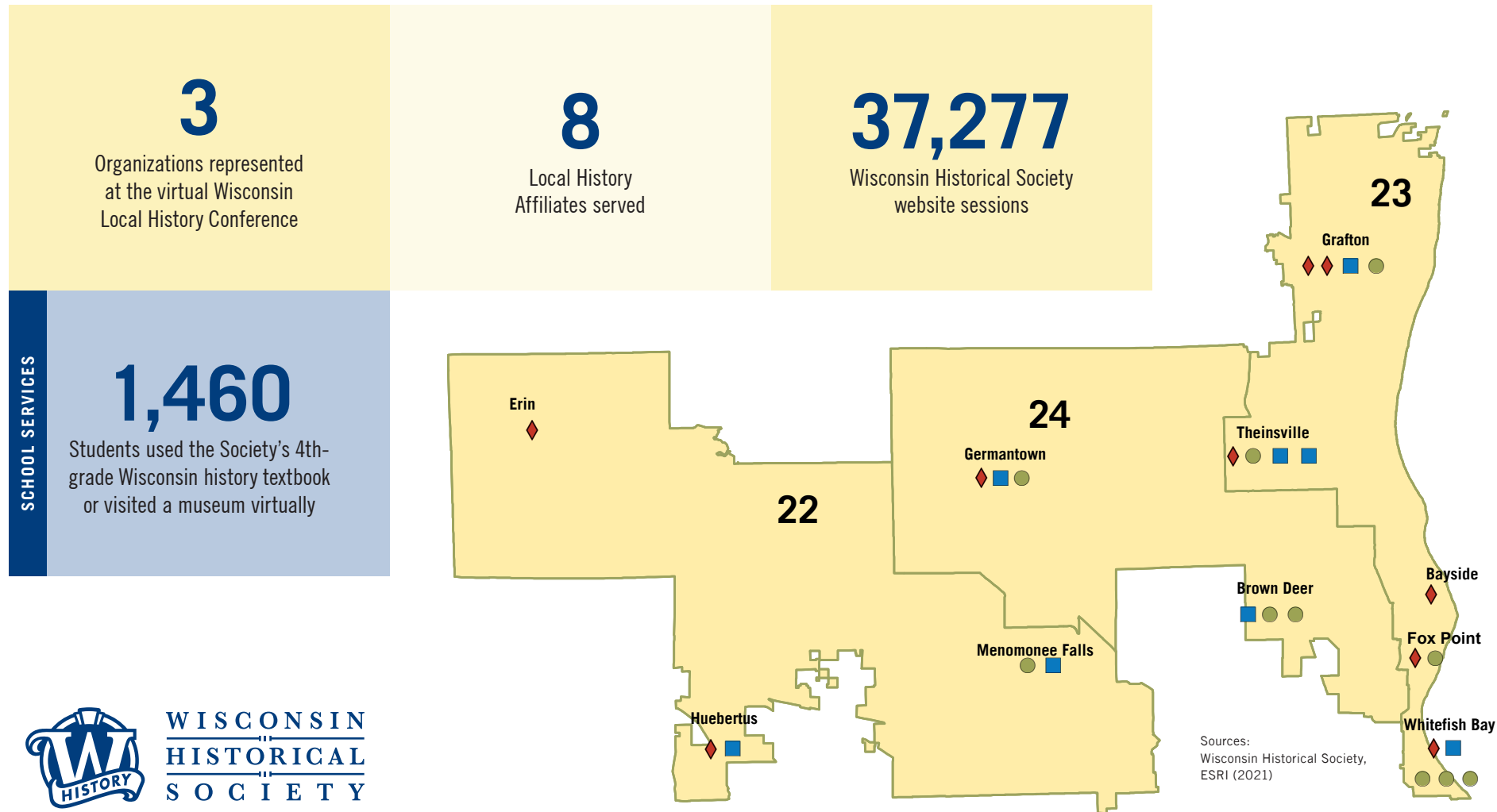


Due to the COVID-19 pandemic, in-person school visits and programming at the Society's 12 historic sites and museums were temporarily paused, with National History Day and some other programs pivoting to a virtual format. Most operations and outreach services are expected to return to normal service in 2022. This map shows virtual services (website sessions, Local History and Historic Preservation Conference participation) and school services (textbook use, virtual school visits, virtual National History Day participation) delivered July 1, 2020 – June 30, 2021.

# HOW WE SERVE YOUR DISTRICT

Society resources used in Wisconsin's  
**SENATE DISTRICT 8**  
**ASSEMBLY DISTRICTS 22-24**

- Local Affiliates
- School Services Participants
- ◆ Schools Visiting Museums or Historic Sites



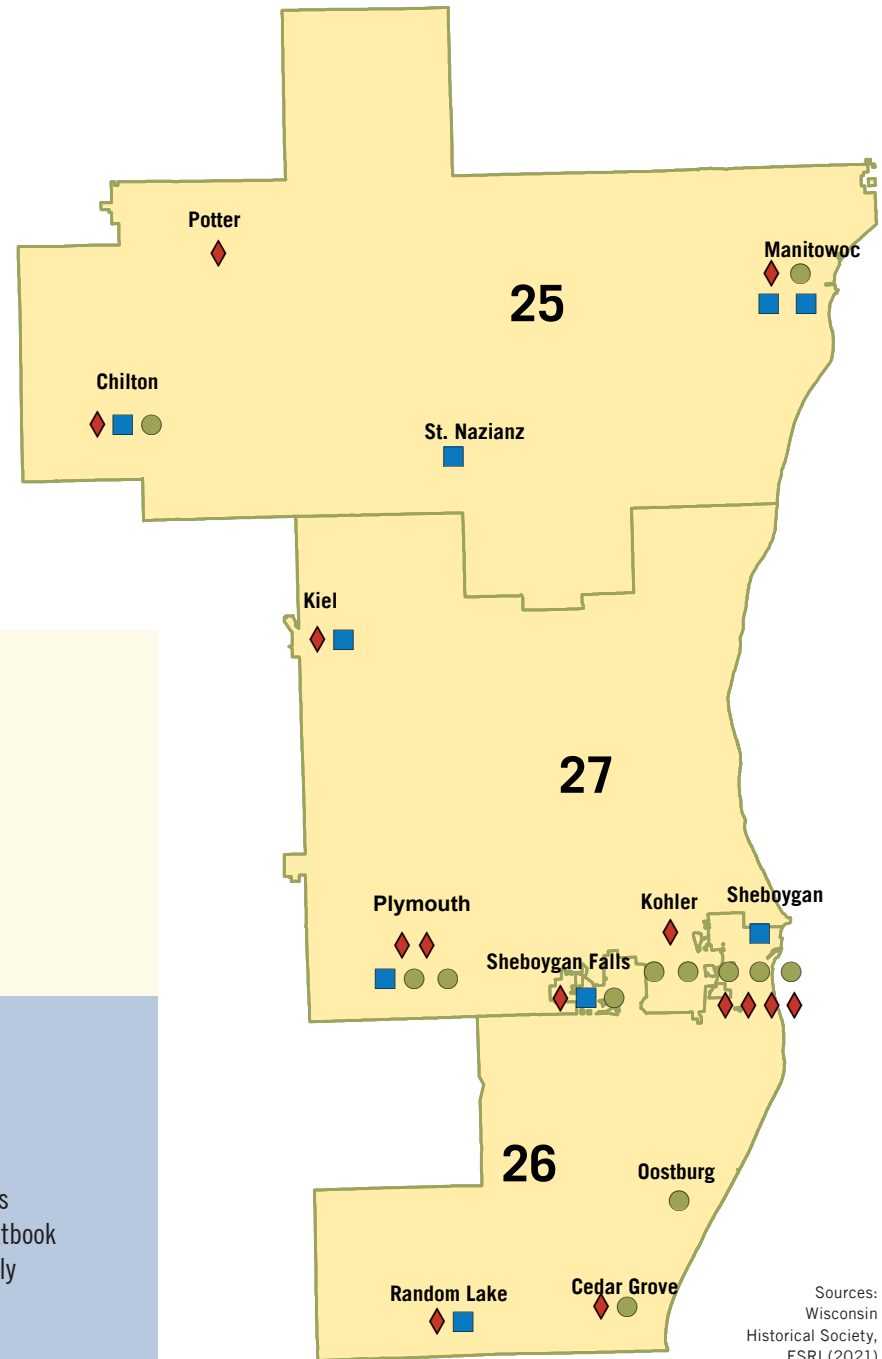
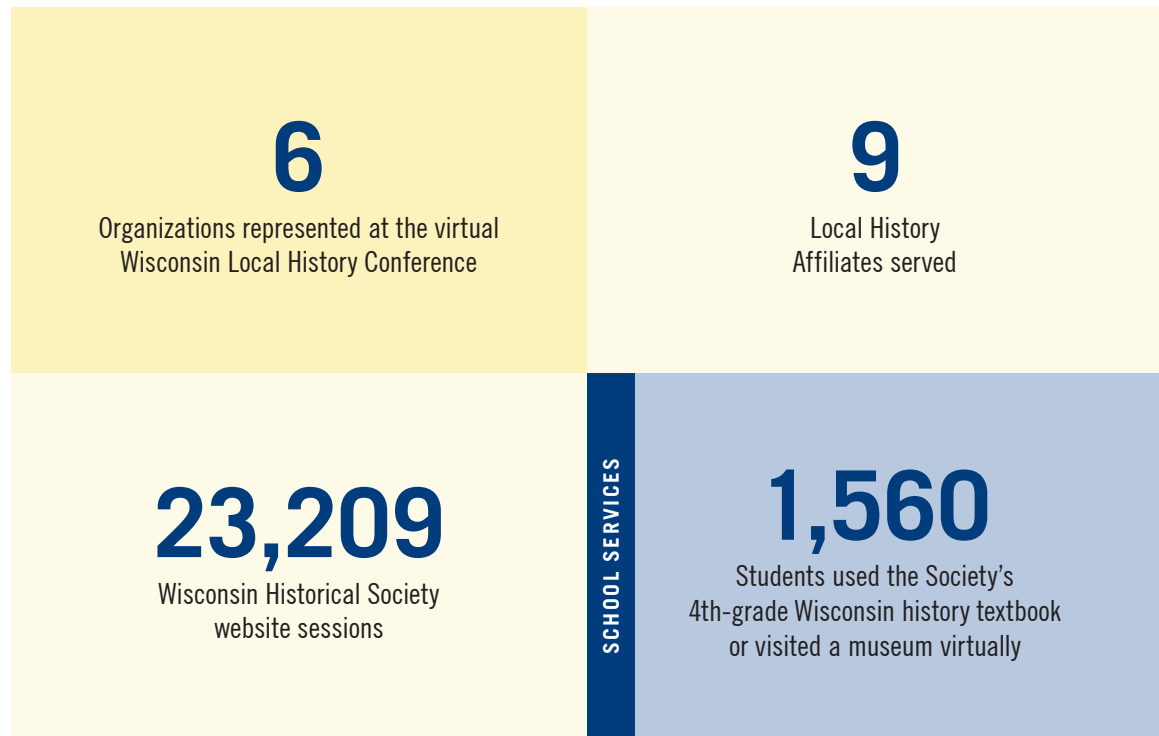
Due to the COVID-19 pandemic, in-person school visits and programming at the Society's 12 historic sites and museums were temporarily paused, with National History Day and some other programs pivoting to a virtual format. Most operations and outreach services are expected to return to normal service in 2022. This map shows virtual services (website sessions, Local History and Historic Preservation Conference participation) and school services (textbook use, virtual school visits, virtual National History Day participation) delivered July 1, 2020 – June 30, 2021.



# HOW WE SERVE YOUR DISTRICT

Society resources used in Wisconsin's  
**SENATE DISTRICT 9**  
**ASSEMBLY DISTRICTS 25-27**

- Local Affiliates
- School Services Participants
- ◆ Schools Visiting Museums or Historic Sites



Sources:  
Wisconsin  
Historical Society,  
ESRI (2021)

Due to the COVID-19 pandemic, in-person school visits and programming at the Society's 12 historic sites and museums were temporarily paused, with National History Day and some other programs pivoting to a virtual format. Most operations and outreach services are expected to return to normal service in 2022. This map shows virtual services (website sessions, Local History and Historic Preservation Conference participation) and school services (textbook use, virtual school visits, virtual National History Day participation) delivered July 1, 2020 – June 30, 2021.

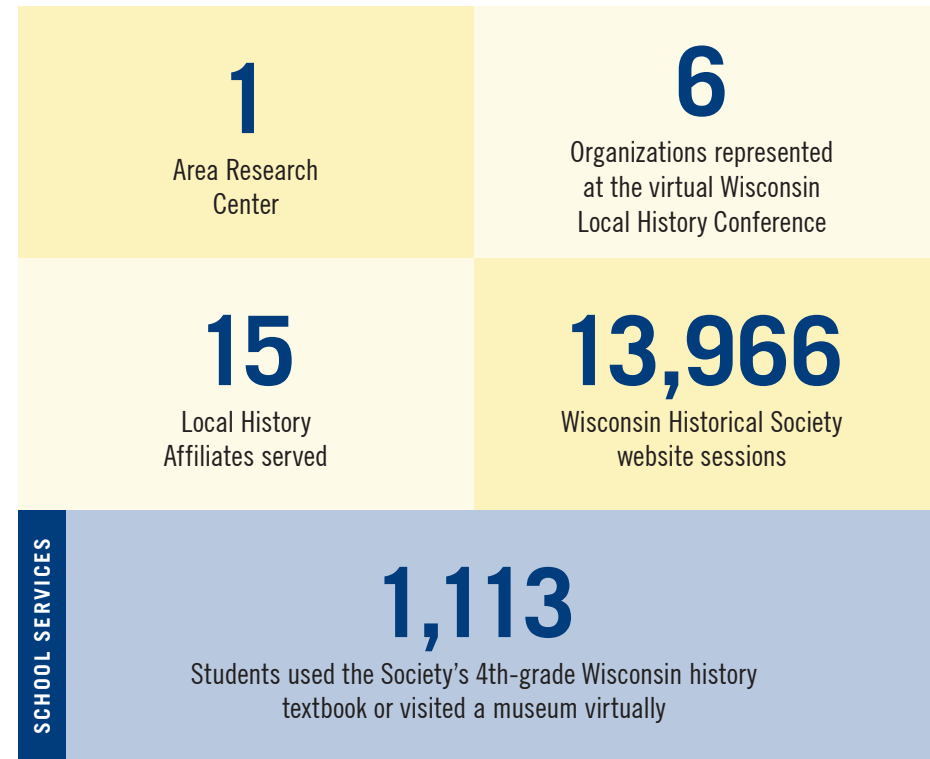
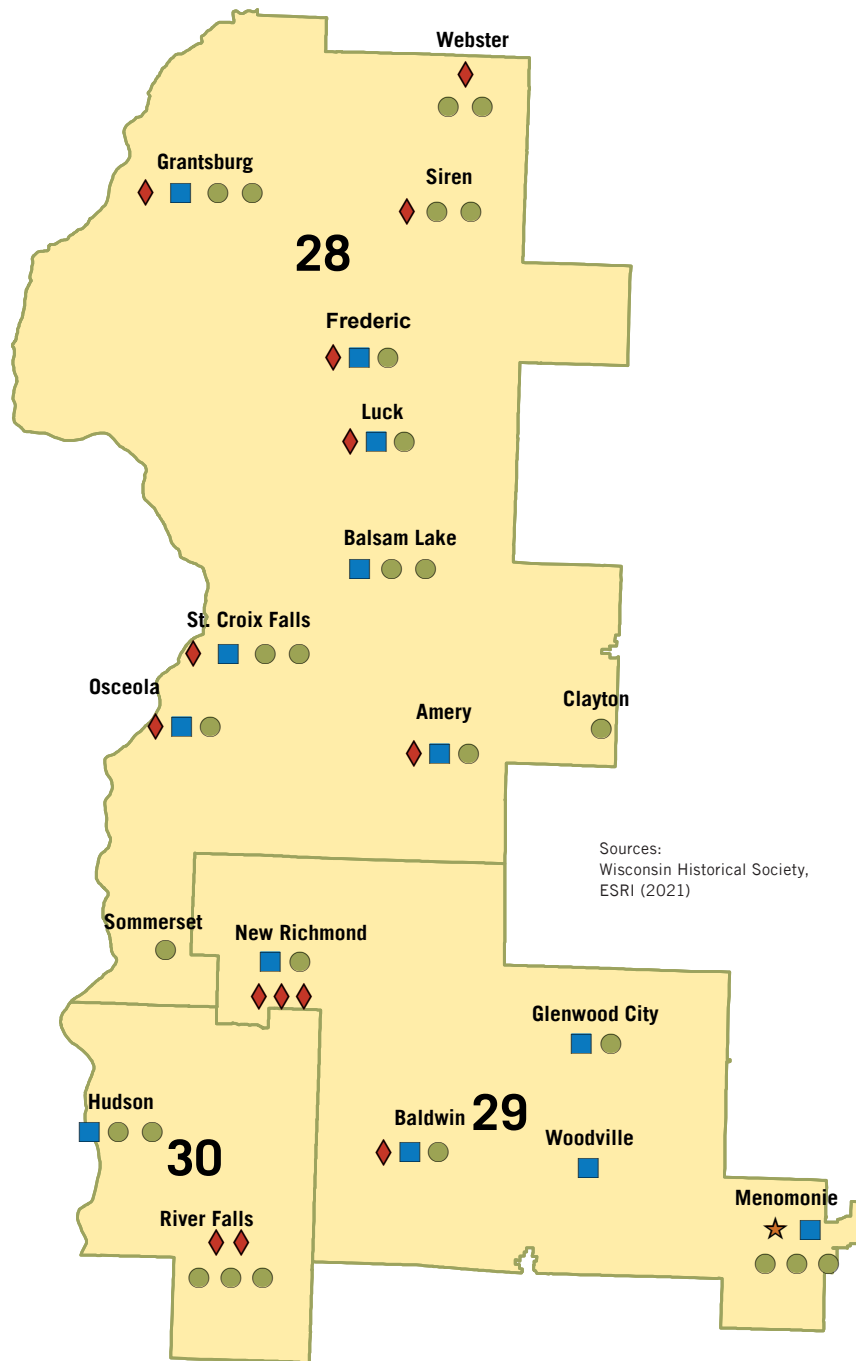
# HOW WE SERVE YOUR DISTRICT

Society resources used in Wisconsin's  
**SENATE DISTRICT 10**  
**ASSEMBLY DISTRICTS 28-30**



WISCONSIN  
 HISTORICAL  
 SOCIETY

- Local Affiliates
- School Services Participants
- ◆ Schools Visiting Museums or Historic Sites
- ★ Area Research Center



Due to the COVID-19 pandemic, in-person school visits and programming at the Society's 12 historic sites and museums were temporarily paused, with National History Day and some other programs pivoting to a virtual format. Most operations and outreach services are expected to return to normal service in 2022. This map shows virtual services (website sessions, Local History and Historic Preservation Conference participation) and school services (textbook use, virtual school visits, virtual National History Day participation) delivered July 1, 2020 – June 30, 2021.

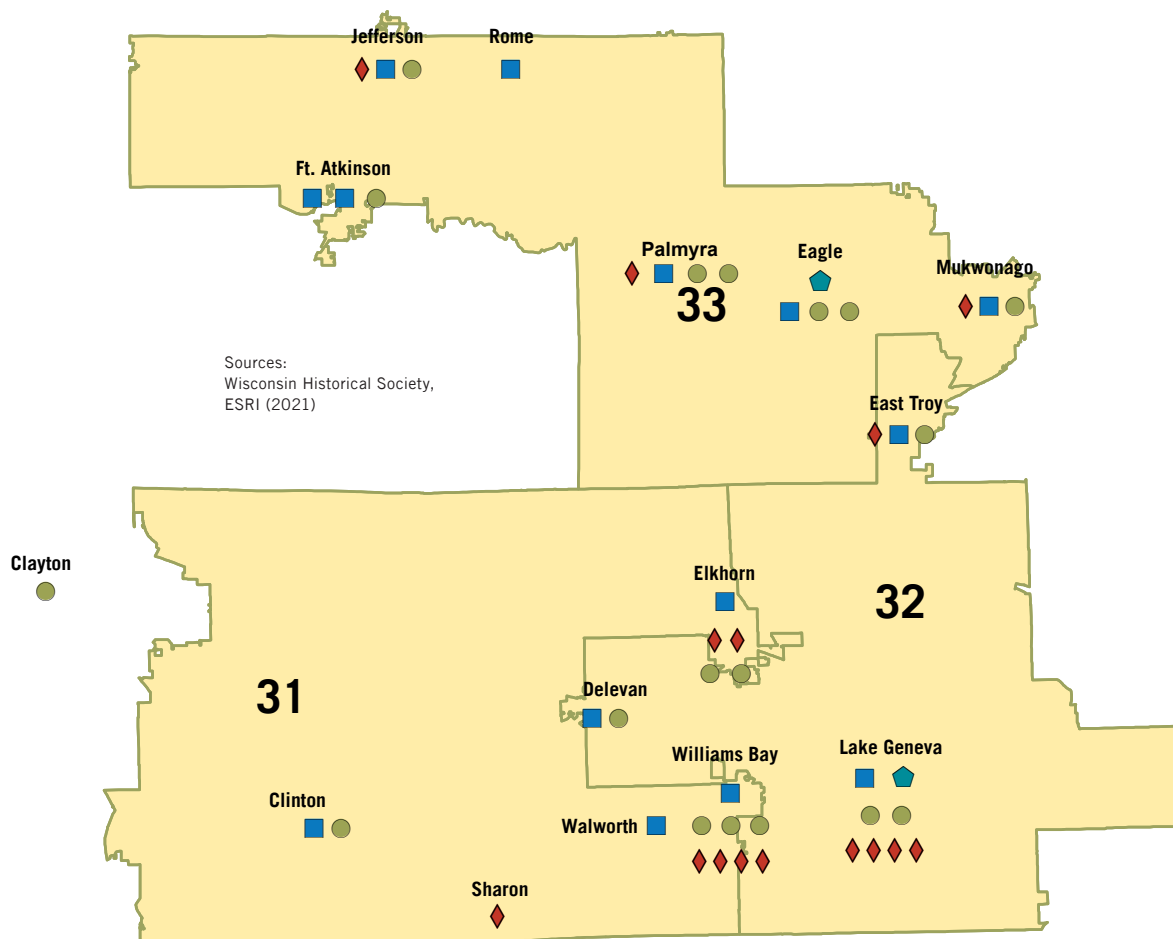
# HOW WE SERVE YOUR DISTRICT



WISCONSIN  
HISTORICAL  
SOCIETY

Society resources used in Wisconsin's  
**SENATE DISTRICT 11**  
**ASSEMBLY DISTRICTS 31-33**

- Local Affiliates
- School Services Participants
- ◆ Schools Visiting Museums or Historic Sites
- ◆ Society Museum or Historic Site



**2**

Museum Sites

**5**

Organizations represented at the virtual Wisconsin Local History Conference

**14**

Local History Affiliates served

**22,353**

Wisconsin Historical Society website sessions

SCHOOL SERVICES

**2,093**

Students used the Society's 4th-grade Wisconsin history textbook, participated in National History Day, or visited a museum virtually

Due to the COVID-19 pandemic, in-person school visits and programming at the Society's 12 historic sites and museums were temporarily paused, with National History Day and some other programs pivoting to a virtual format. Most operations and outreach services are expected to return to normal service in 2022. This map shows virtual services (website sessions, Local History and Historic Preservation Conference participation) and school services (textbook use, virtual school visits, virtual National History Day participation) delivered July 1, 2020 – June 30, 2021.

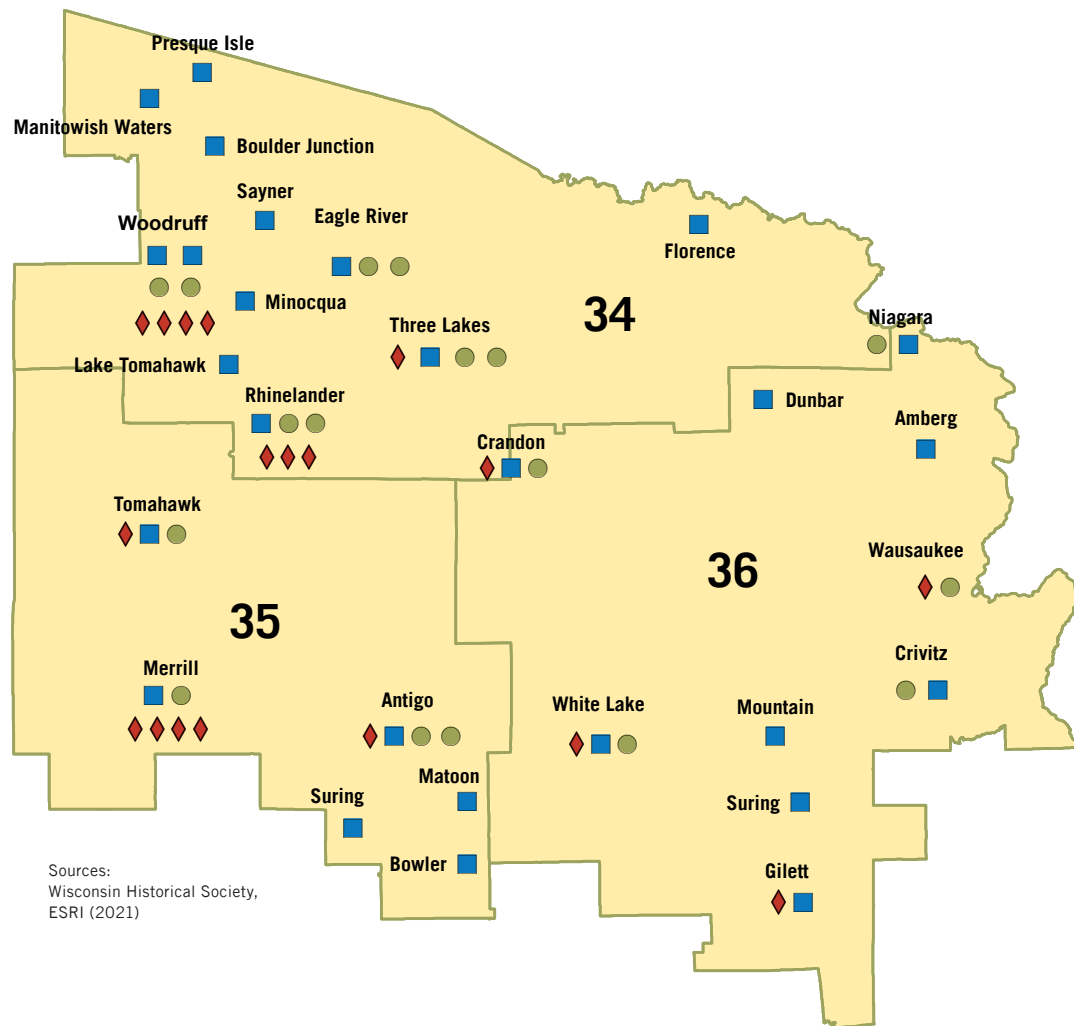
# HOW WE SERVE YOUR DISTRICT



WISCONSIN  
HISTORICAL  
SOCIETY

Society resources used in Wisconsin's  
**SENATE DISTRICT 12**  
**ASSEMBLY DISTRICTS 34-36**

- Local Affiliates
- School Services Participants
- ◆ Schools Visiting Museums or Historic Sites



Sources:  
Wisconsin Historical Society,  
ESRI (2021)

11

Organizations represented at the virtual Wisconsin Local History Conference

27

Local History Affiliates served

14,131

Wisconsin Historical Society website sessions

1,127

Students used the Society's 4th-grade Wisconsin history textbook or visited a museum virtually

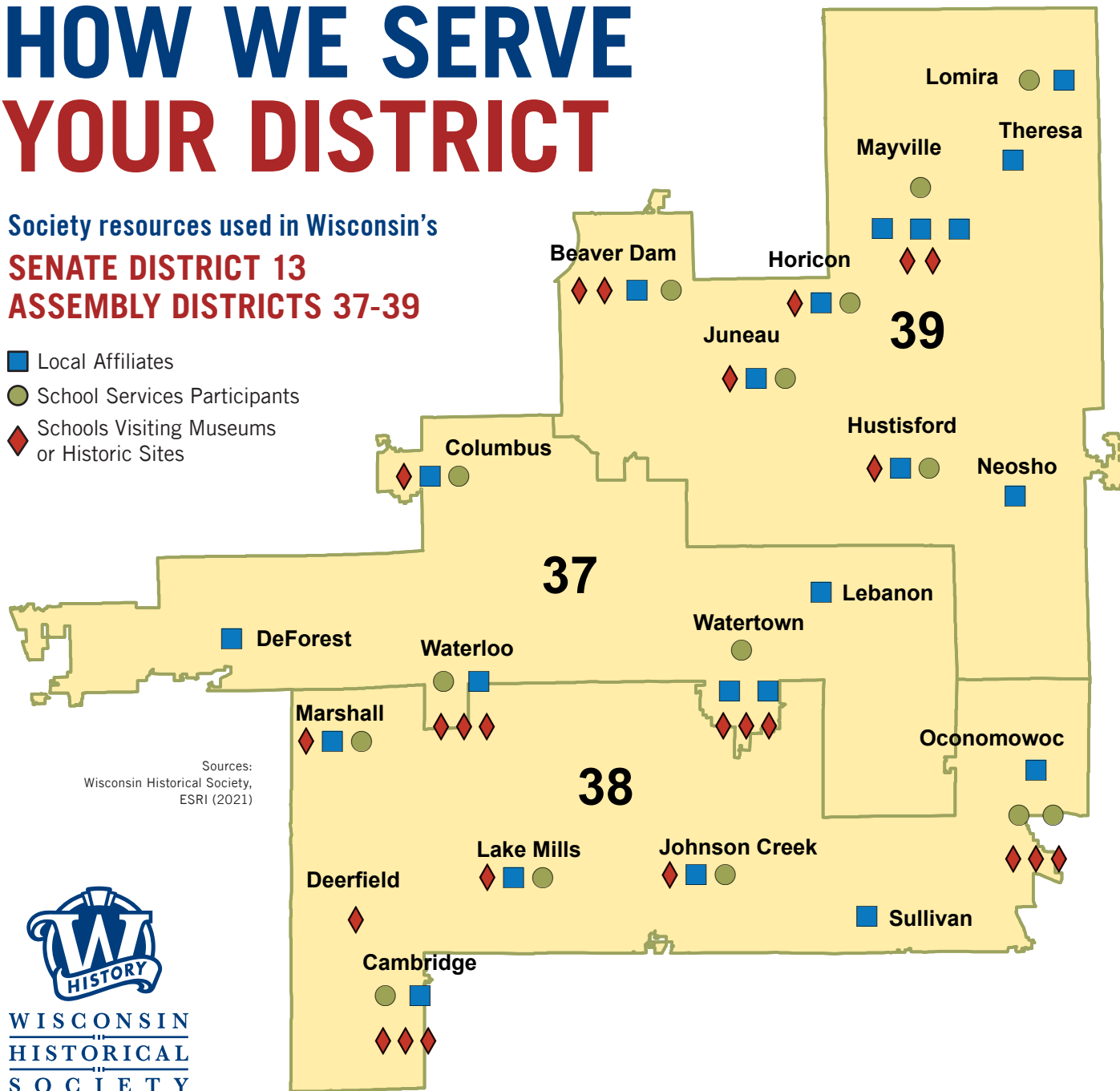
SCHOOL SERVICES

Due to the COVID-19 pandemic, in-person school visits and programming at the Society's 12 historic sites and museums were temporarily paused, with National History Day and some other programs pivoting to a virtual format. Most operations and outreach services are expected to return to normal service in 2022. This map shows virtual services (website sessions, Local History and Historic Preservation Conference participation) and school services (textbook use, virtual school visits, virtual National History Day participation) delivered July 1, 2020 – June 30, 2021.

# HOW WE SERVE YOUR DISTRICT

Society resources used in Wisconsin's  
**SENATE DISTRICT 13**  
**ASSEMBLY DISTRICTS 37-39**

- Local Affiliates
- School Services Participants
- ◆ Schools Visiting Museums or Historic Sites



## 2

Organizations represented  
at the virtual Wisconsin  
Local History Conference

## 22

Local History  
Affiliates served

## 23,276

Wisconsin Historical Society  
website sessions

SCHOOL SERVICES

## 2,134

Students used the  
Society's 4th-grade  
Wisconsin history textbook,  
participated in National  
History Day, or visited a  
museum virtually

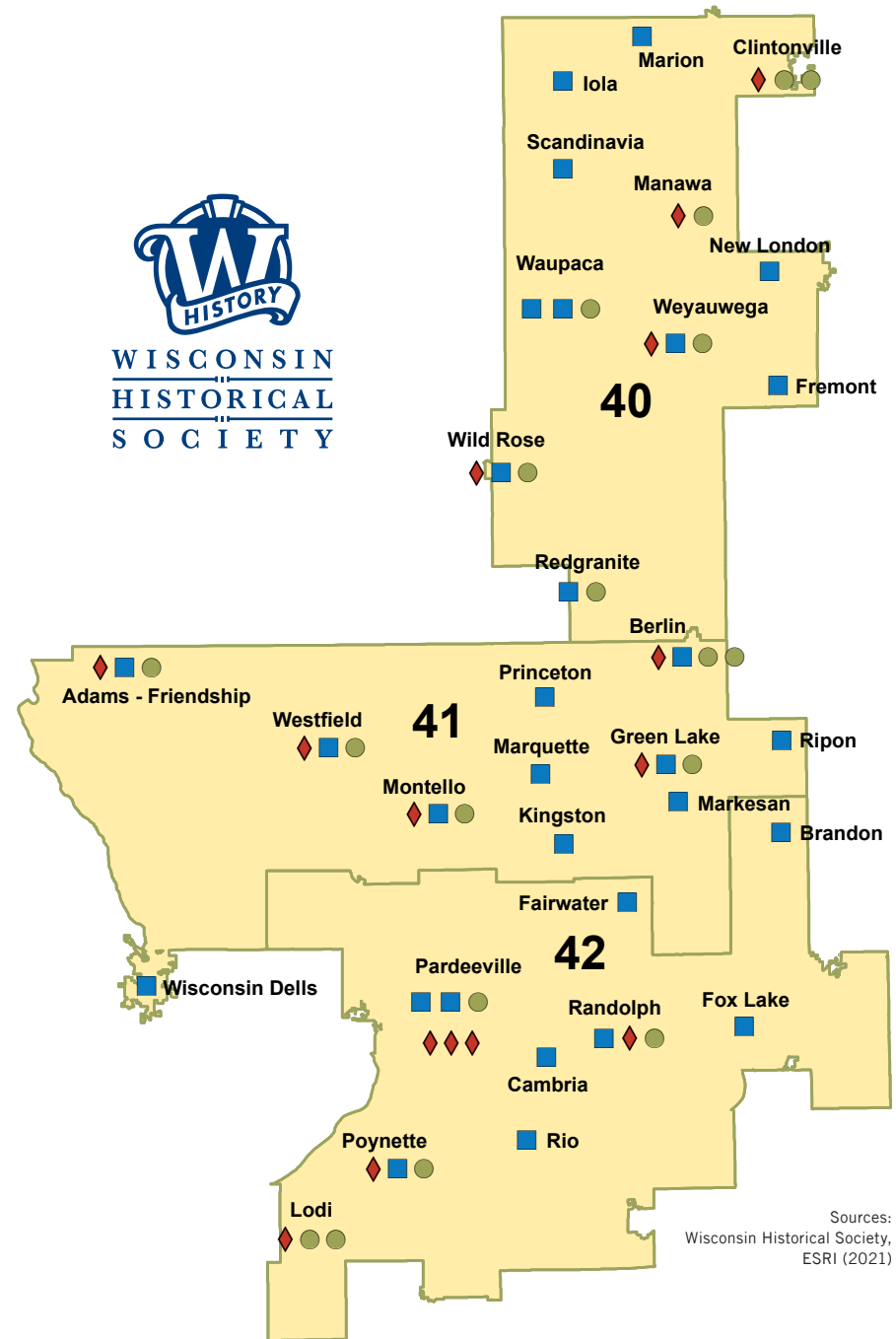
Due to the COVID-19 pandemic, in-person school visits and programming at the Society's 12 historic sites and museums were temporarily paused, with National History Day and some other programs pivoting to a virtual format. Most operations and outreach services are expected to return to normal service in 2022. This map shows virtual services (website sessions, Local History and Historic Preservation Conference participation) and school services (textbook use, virtual school visits, virtual National History Day participation) delivered July 1, 2020 – June 30, 2021.

# HOW WE SERVE YOUR DISTRICT

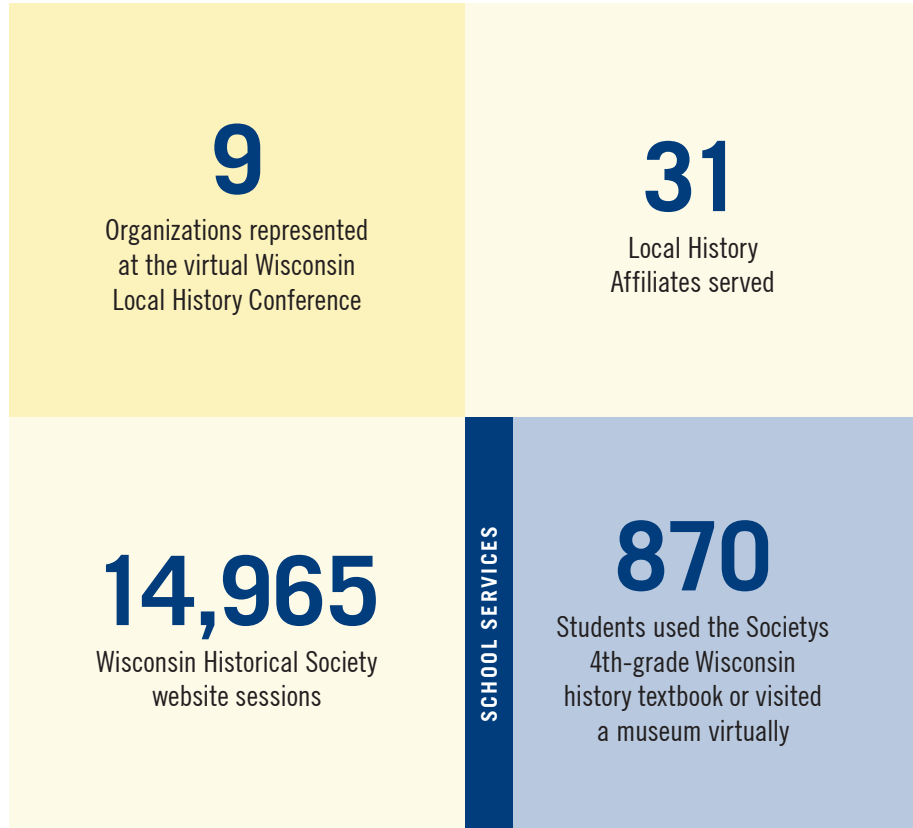
Society resources used in Wisconsin's

**SENATE DISTRICT 14 | ASSEMBLY DISTRICTS 40-42**

- Local Affiliates
- ◆ Schools Visiting Museums or Historic Sites
- School Services Participants
- ◆ Society Museum or Historic Site



Sources:  
Wisconsin Historical Society,  
ESRI (2021)



Due to the COVID-19 pandemic, in-person school visits and programming at the Society's 12 historic sites and museums were temporarily paused, with National History Day and some other programs pivoting to a virtual format. Most operations and outreach services are expected to return to normal service in 2022. This map shows virtual services (website sessions, Local History and Historic Preservation Conference participation) and school services (textbook use, virtual school visits, virtual National History Day participation) delivered July 1, 2020 – June 30, 2021.

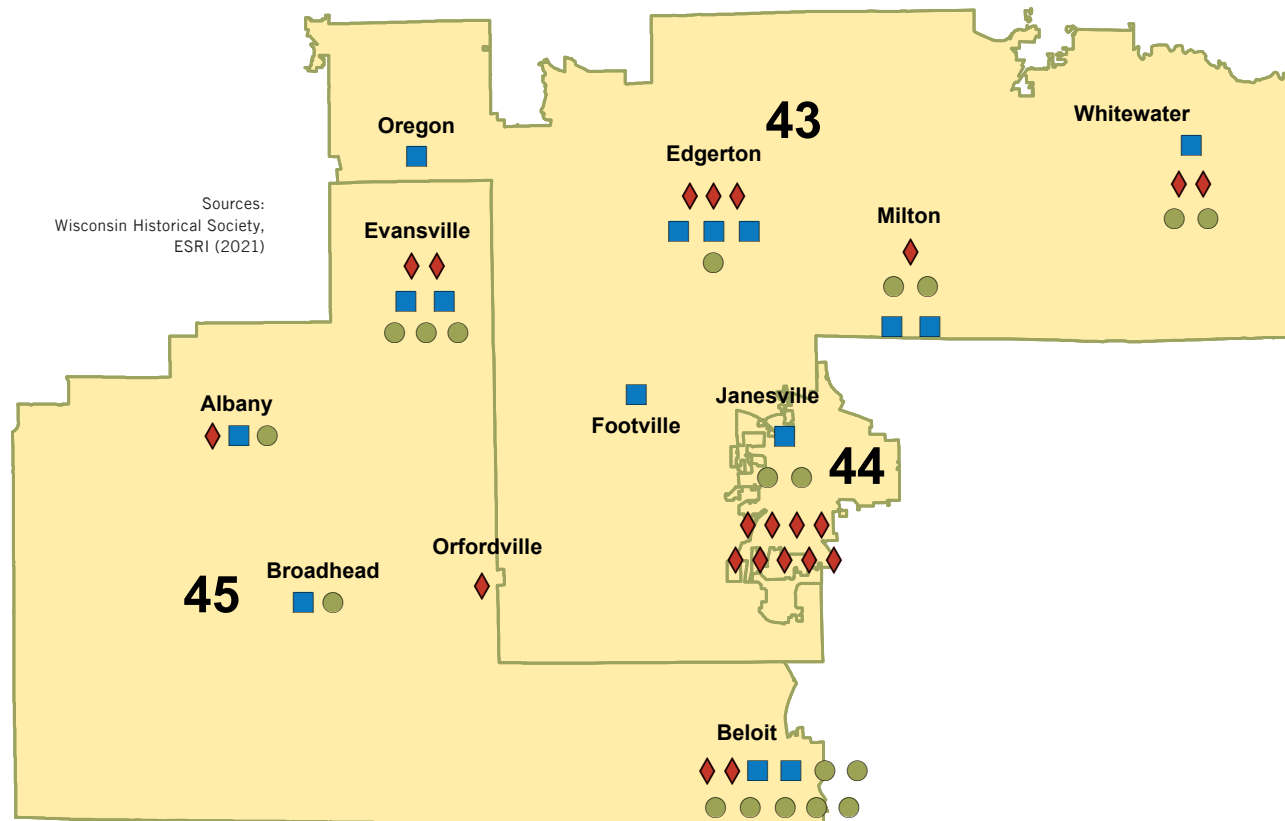
# HOW WE SERVE YOUR DISTRICT



WISCONSIN  
HISTORICAL  
SOCIETY

## Society resources used in Wisconsin's SENATE DISTRICT 15 | ASSEMBLY DISTRICTS 43-45

- Local Affiliates
- ◆ Society Museum or Historic Site
- School Services Participants
- ★ Area Research Center



# 10

Organizations represented  
at the virtual Wisconsin  
Local History Conference

# 15

Local History  
Affiliates served

# 35,513

Wisconsin Historical Society  
website sessions

# 2,170

Students used the Society's  
4th-grade Wisconsin history  
textbook, participated in  
National History Day, or  
visited a museum virtually

SCHOOL SERVICES

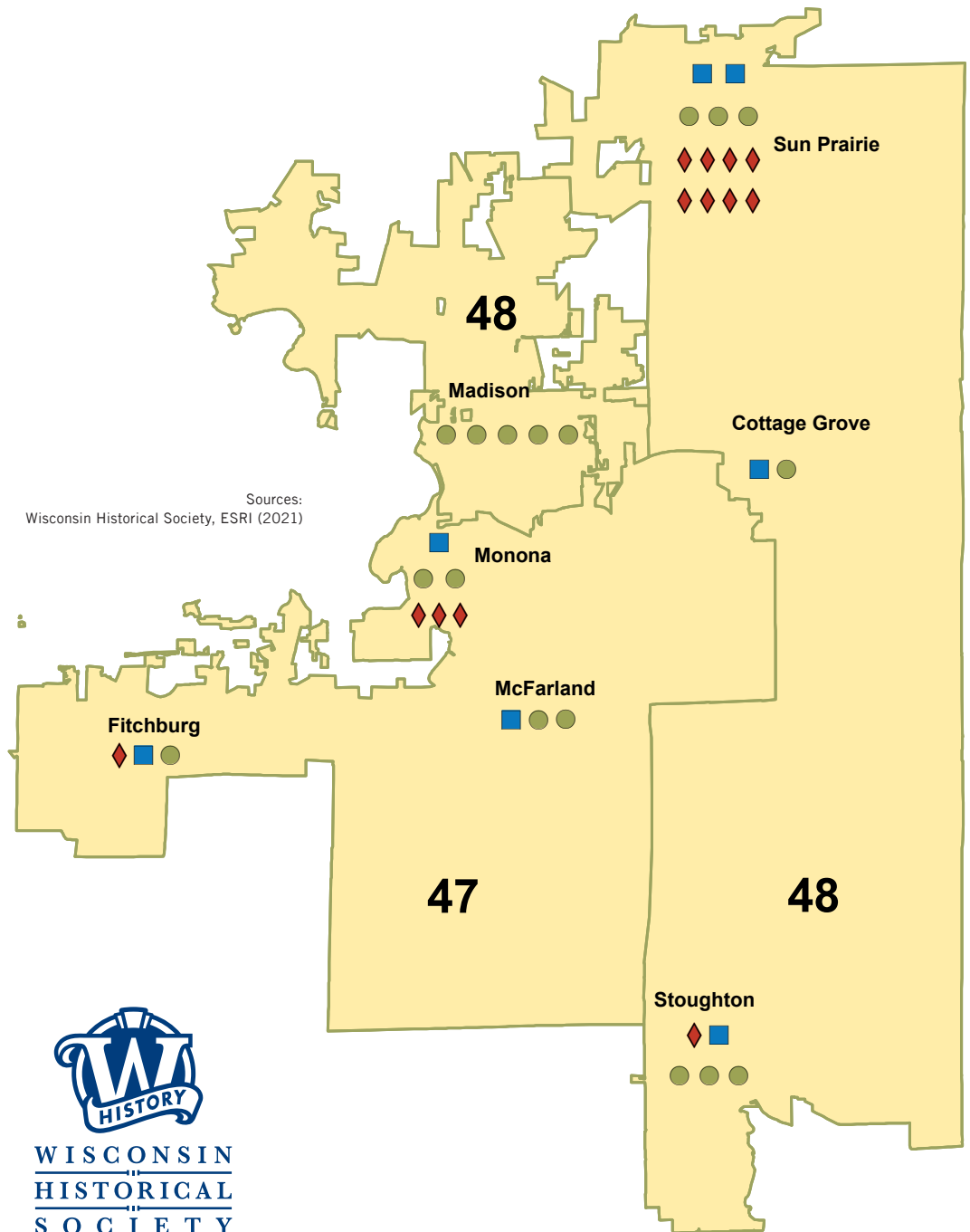
Due to the COVID-19 pandemic, in-person school visits and programming at the Society's 12 historic sites and museums were temporarily paused, with National History Day and some other programs pivoting to a virtual format. Most operations and outreach services are expected to return to normal service in 2022. This map shows virtual services (website sessions, Local History and Historic Preservation Conference participation) and school services (textbook use, virtual school visits, virtual National History Day participation) delivered July 1, 2020 – June 30, 2021.

# HOW WE SERVE YOUR DISTRICT

Society resources used in Wisconsin's  
**SENATE DISTRICT 16**  
**ASSEMBLY DISTRICTS 46-48**

- Local Affiliates
- School Services Participants
- ◆ Schools Visiting Museums or Historic Sites

<h2 style="font-size: 48px; color: blue;">7</h2> <p>Local History Affiliates served</p>	<h2 style="font-size: 48px; color: blue;">13</h2> <p>Organizations represented at the virtual Wisconsin Local History Conference</p>
<h2 style="font-size: 48px; color: blue;">31,658</h2> <p>Wisconsin Historical Society website sessions</p>	<div style="writing-mode: vertical-rl; transform: rotate(180deg); font-weight: bold; font-size: 12px; color: white; background-color: blue; padding: 2px;">SCHOOL SERVICES</div> <h2 style="font-size: 48px; color: blue;">1,695</h2> <p>Students used the Society's 4th-grade Wisconsin history textbook, participated in National History Day, or visited a museum virtually</p>

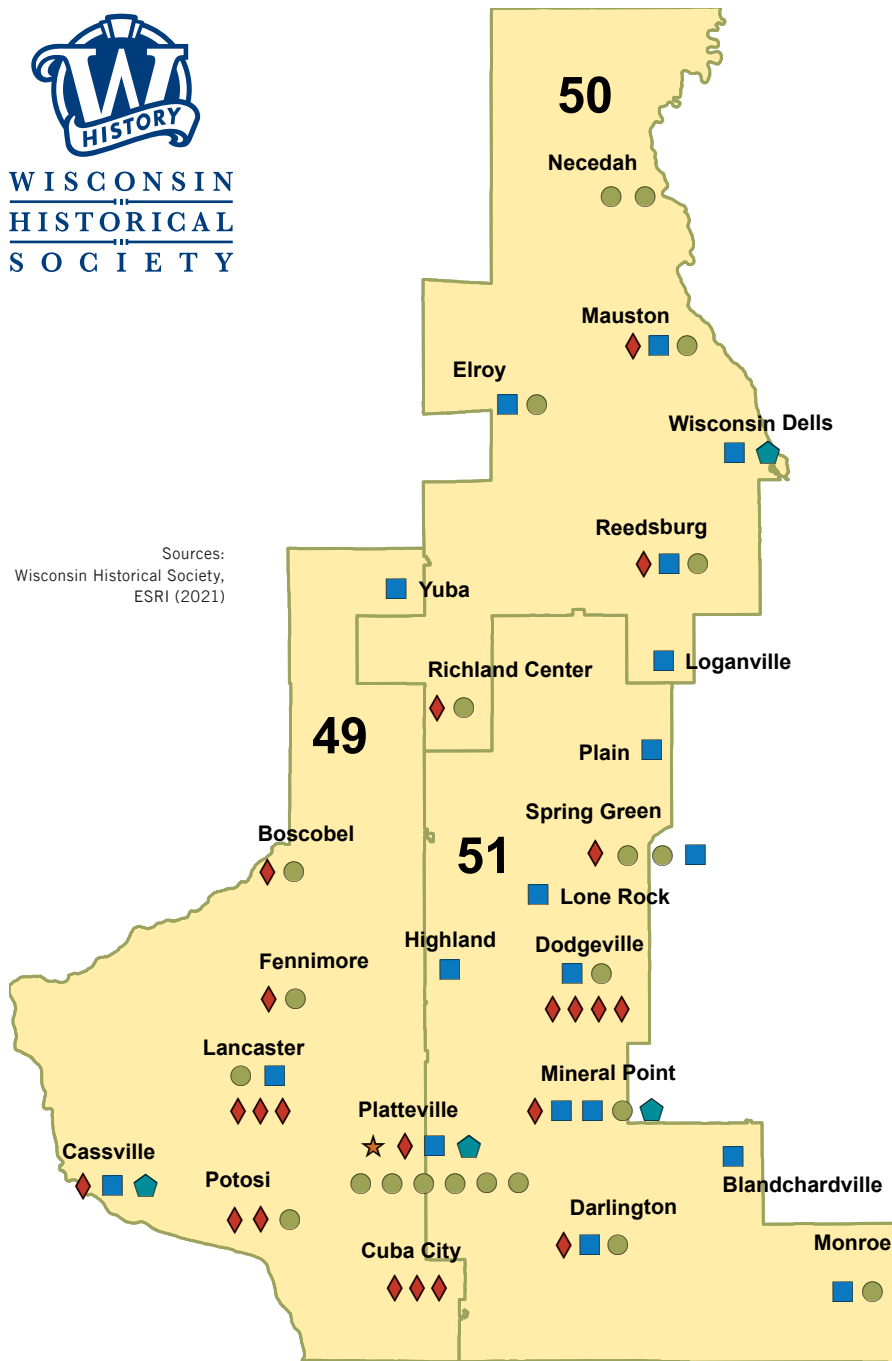


Due to the COVID-19 pandemic, in-person school visits and programming at the Society's 12 historic sites and museums were temporarily paused, with National History Day and some other programs pivoting to a virtual format. Most operations and outreach services are expected to return to normal service in 2022. This map shows virtual services (website sessions, Local History and Historic Preservation Conference participation) and school services (textbook use, virtual school visits, virtual National History Day participation) delivered July 1, 2020 – June 30, 2021.





Sources:  
Wisconsin Historical Society,  
ESRI (2021)



# HOW WE SERVE YOUR DISTRICT

Society resources used in Wisconsin's

**SENATE DISTRICT 17 | ASSEMBLY DISTRICTS 49-51**

- Local Affiliates
- School Services Participants
- ★ Area Research Center
- ◆ Schools Visiting Museums or Historic Sites
- ⬠ Society Museum or Historic Site



SCHOOL SERVICES

Due to the COVID-19 pandemic, in-person school visits and programming at the Society's 12 historic sites and museums were temporarily paused, with National History Day and some other programs pivoting to a virtual format. Most operations and outreach services are expected to return to normal service in 2022. This map shows virtual services (website sessions, Local History and Historic Preservation Conference participation) and school services (textbook use, virtual school visits, virtual National History Day participation) delivered July 1, 2020 – June 30, 2021.

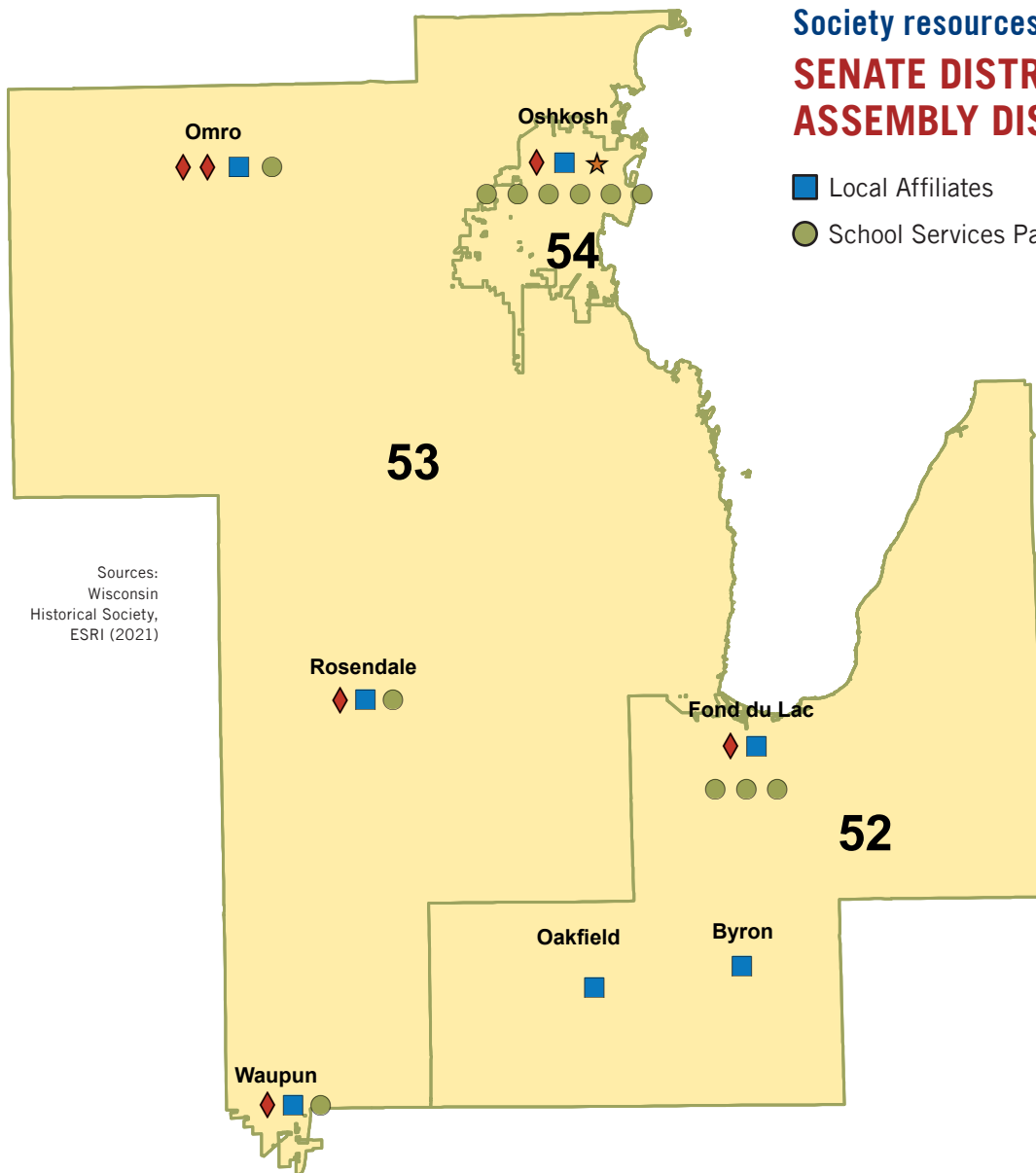
# HOW WE SERVE YOUR DISTRICT



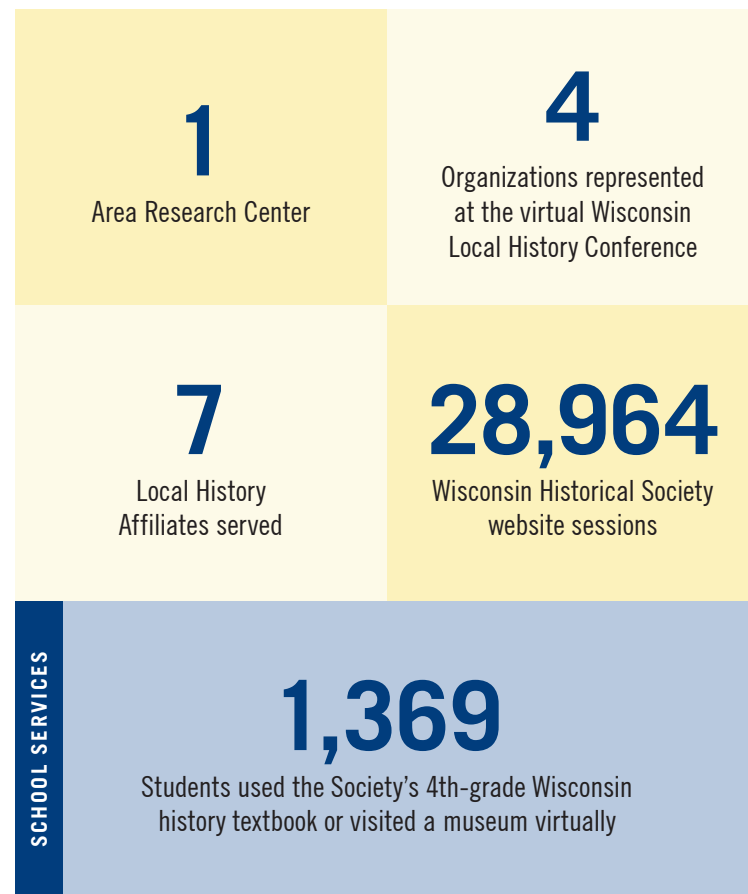
WISCONSIN  
HISTORICAL  
SOCIETY

## Society resources used in Wisconsin's SENATE DISTRICT 18 ASSEMBLY DISTRICTS 52-54

- Local Affiliates
- ◆ Schools Visiting Museums or Historic Sites
- School Services Participants
- ★ Area Research Center



Sources:  
Wisconsin  
Historical Society,  
ESRI (2021)

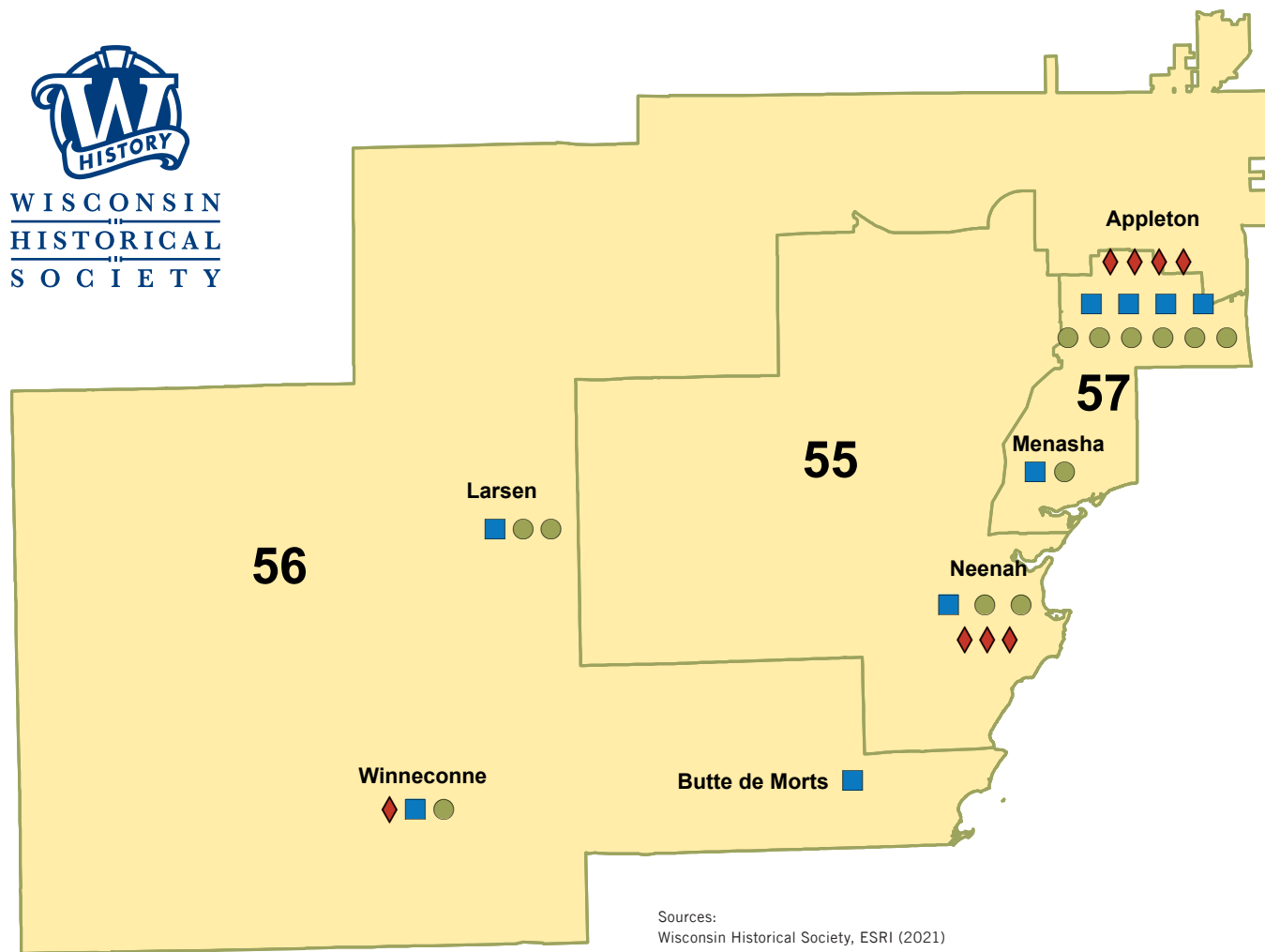


Due to the COVID-19 pandemic, in-person school visits and programming at the Society's 12 historic sites and museums were temporarily paused, with National History Day and some other programs pivoting to a virtual format. Most operations and outreach services are expected to return to normal service in 2022. This map shows virtual services (website sessions, Local History and Historic Preservation Conference participation) and school services (textbook use, virtual school visits, virtual National History Day participation) delivered July 1, 2020 – June 30, 2021.

# HOW WE SERVE YOUR DISTRICT

Society resources used in Wisconsin's  
**SENATE DISTRICT 19**  
**ASSEMBLY DISTRICTS 55-57**

- Local Affiliates
- School Services Participants
- ◆ Schools Visiting Museums or Historic Sites



**7**  
Organizations represented  
at the virtual Wisconsin  
Local History Conference

**9**  
Local History  
Affiliates served

**29,924**  
Wisconsin Historical Society  
website sessions

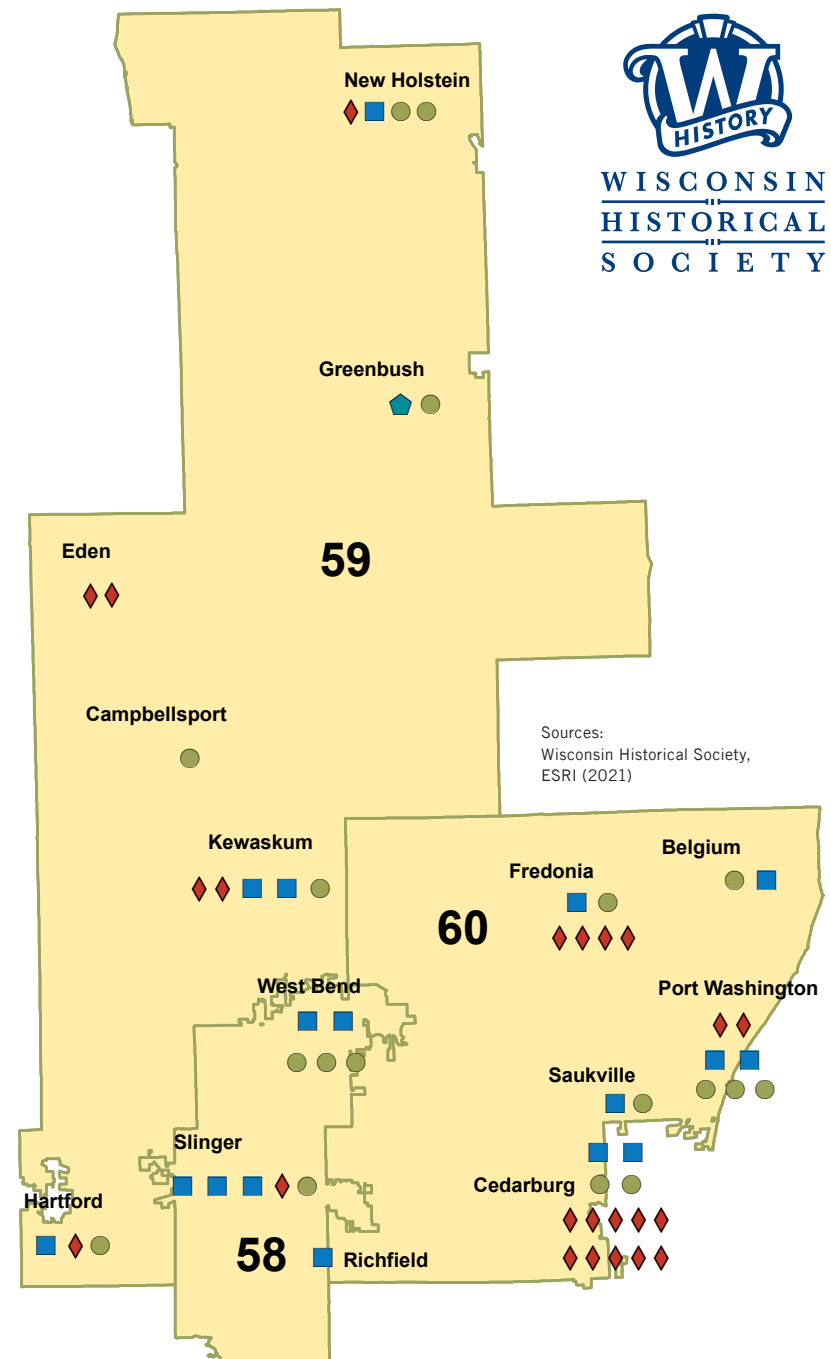
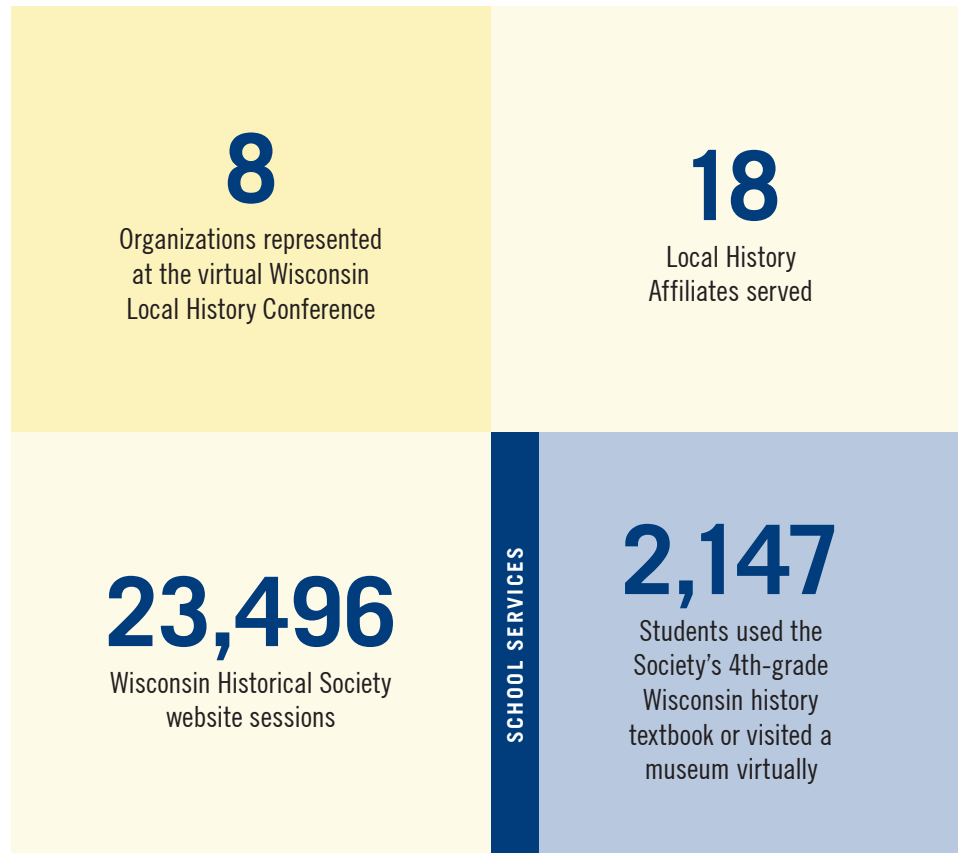
**SCHOOL SERVICES**  
**2,274**  
Students used the Society's  
4th-grade Wisconsin history  
textbook or visited a  
museum virtually

Due to the COVID-19 pandemic, in-person school visits and programming at the Society's 12 historic sites and museums were temporarily paused, with National History Day and some other programs pivoting to a virtual format. Most operations and outreach services are expected to return to normal service in 2022. This map shows virtual services (website sessions, Local History and Historic Preservation Conference participation) and school services (textbook use, virtual school visits, virtual National History Day participation) delivered July 1, 2020 – June 30, 2021.

# HOW WE SERVE YOUR DISTRICT

Society resources used in Wisconsin's  
**SENATE DISTRICT 20 | ASSEMBLY DISTRICTS 58-60**

- Local Affiliates
- ◆ Schools Visiting Museums or Historic Sites
- School Services Participants
- ◆ Society Museum or Historic Site



Due to the COVID-19 pandemic, in-person school visits and programming at the Society's 12 historic sites and museums were temporarily paused, with National History Day and some other programs pivoting to a virtual format. Most operations and outreach services are expected to return to normal service in 2022. This map shows virtual services (website sessions, Local History and Historic Preservation Conference participation) and school services (textbook use, virtual school visits, virtual National History Day participation) delivered July 1, 2020 – June 30, 2021.

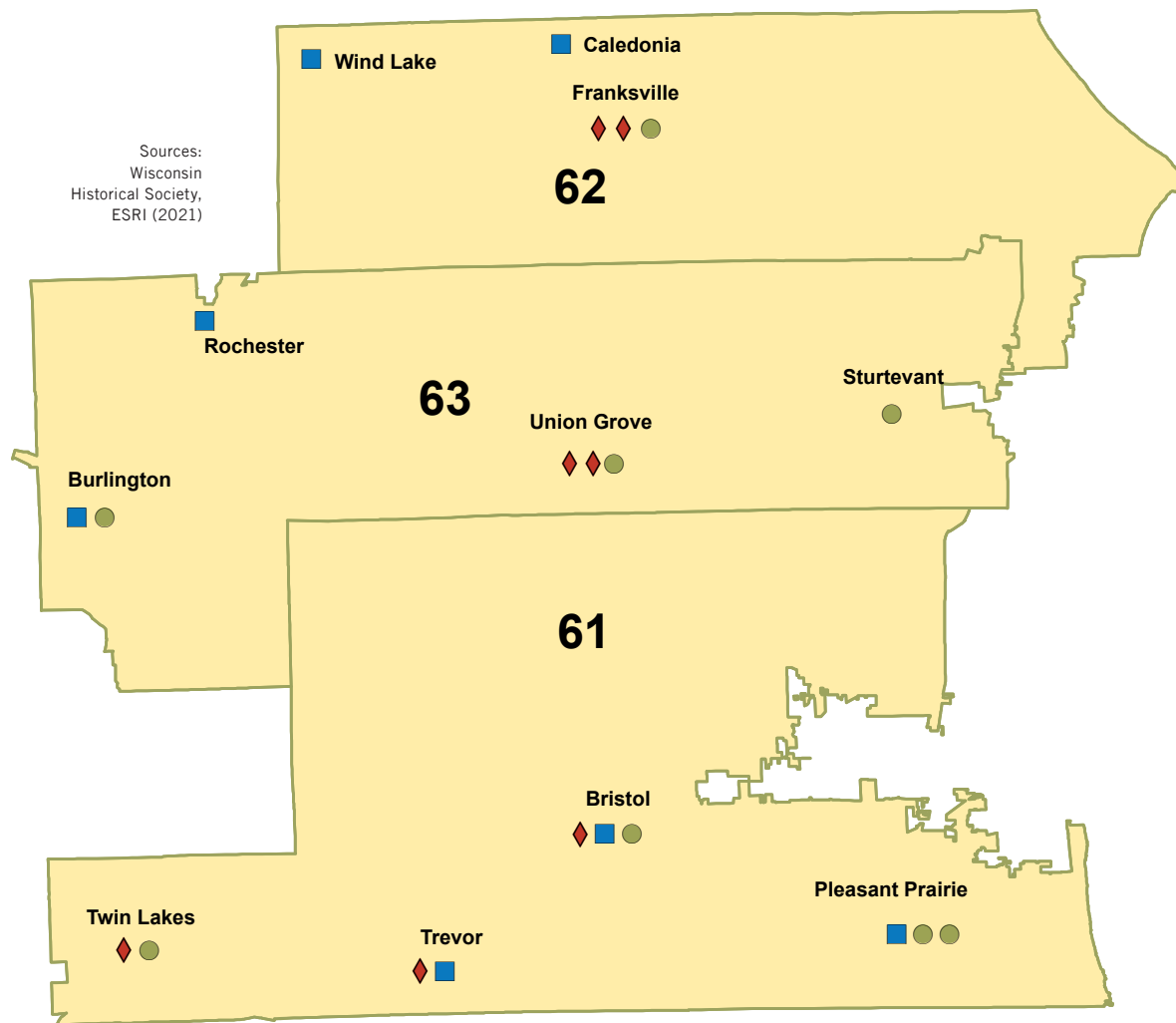
# HOW WE SERVE YOUR DISTRICT



WISCONSIN  
HISTORICAL  
SOCIETY

Society resources used in Wisconsin's  
**SENATE DISTRICT 21**  
**ASSEMBLY DISTRICTS 61-63**

- Local Affiliates
- School Services Participants
- ◆ Schools Visiting Museums or Historic Sites



Due to the COVID-19 pandemic, in-person school visits and programming at the Society's 12 historic sites and museums were temporarily paused, with National History Day and some other programs pivoting to a virtual format. Most operations and outreach services are expected to return to normal service in 2022. This map shows virtual services (website sessions, Local History and Historic Preservation Conference participation) and school services (textbook use, virtual school visits, virtual National History Day participation) delivered July 1, 2020 – June 30, 2021.

# HOW WE SERVE YOUR DISTRICT

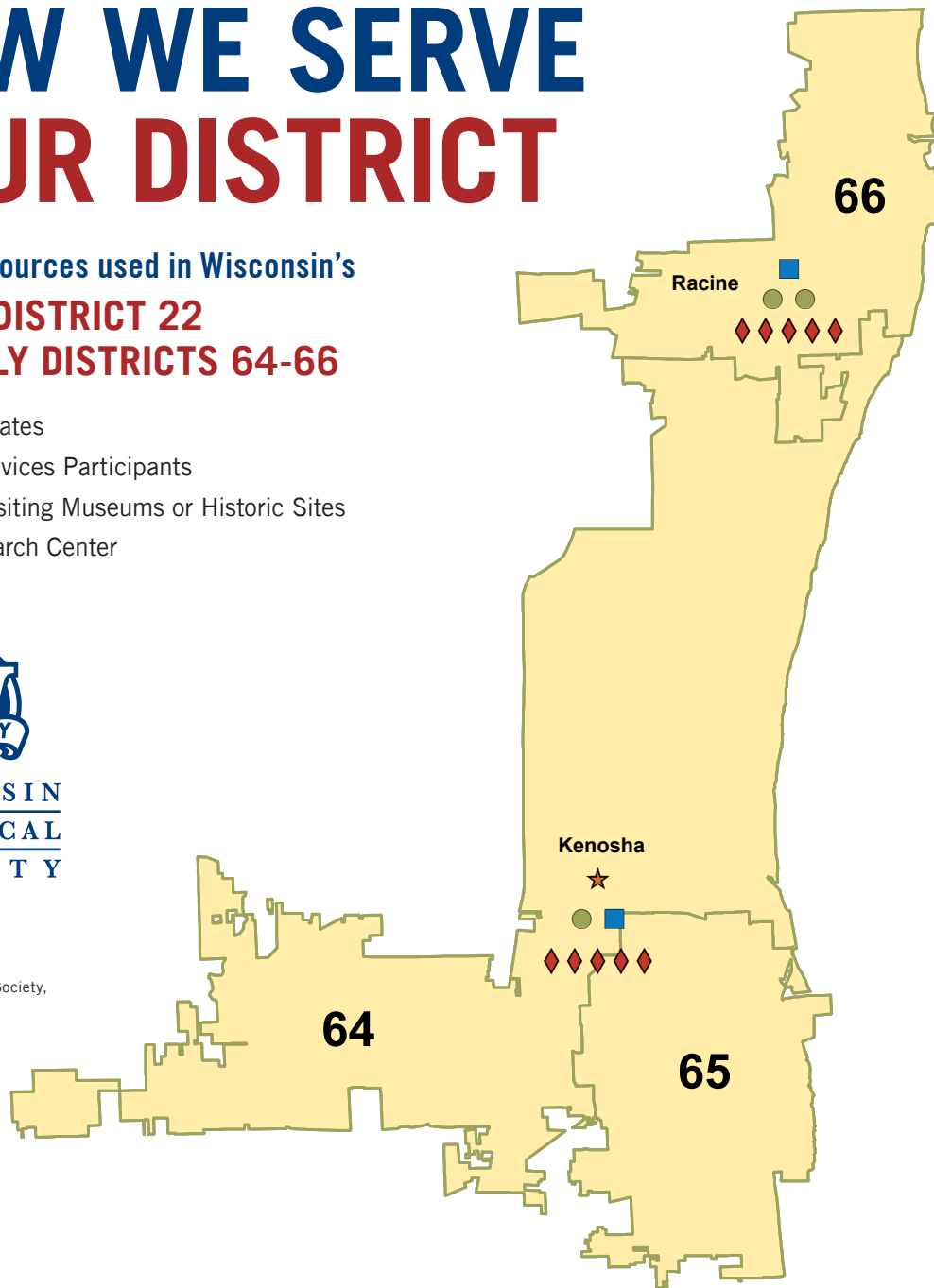
Society resources used in Wisconsin's  
**SENATE DISTRICT 22**  
**ASSEMBLY DISTRICTS 64-66**

- Local Affiliates
- School Services Participants
- ◆ Schools Visiting Museums or Historic Sites
- ★ Area Research Center



WISCONSIN  
 HISTORICAL  
 SOCIETY

Sources:  
 Wisconsin Historical Society,  
 ESRI (2021)



**5**

Organizations represented at the virtual Wisconsin Local History Conference

**2**

Local History Affiliates served

**37,670**

Wisconsin Historical Society website sessions

**3,140**

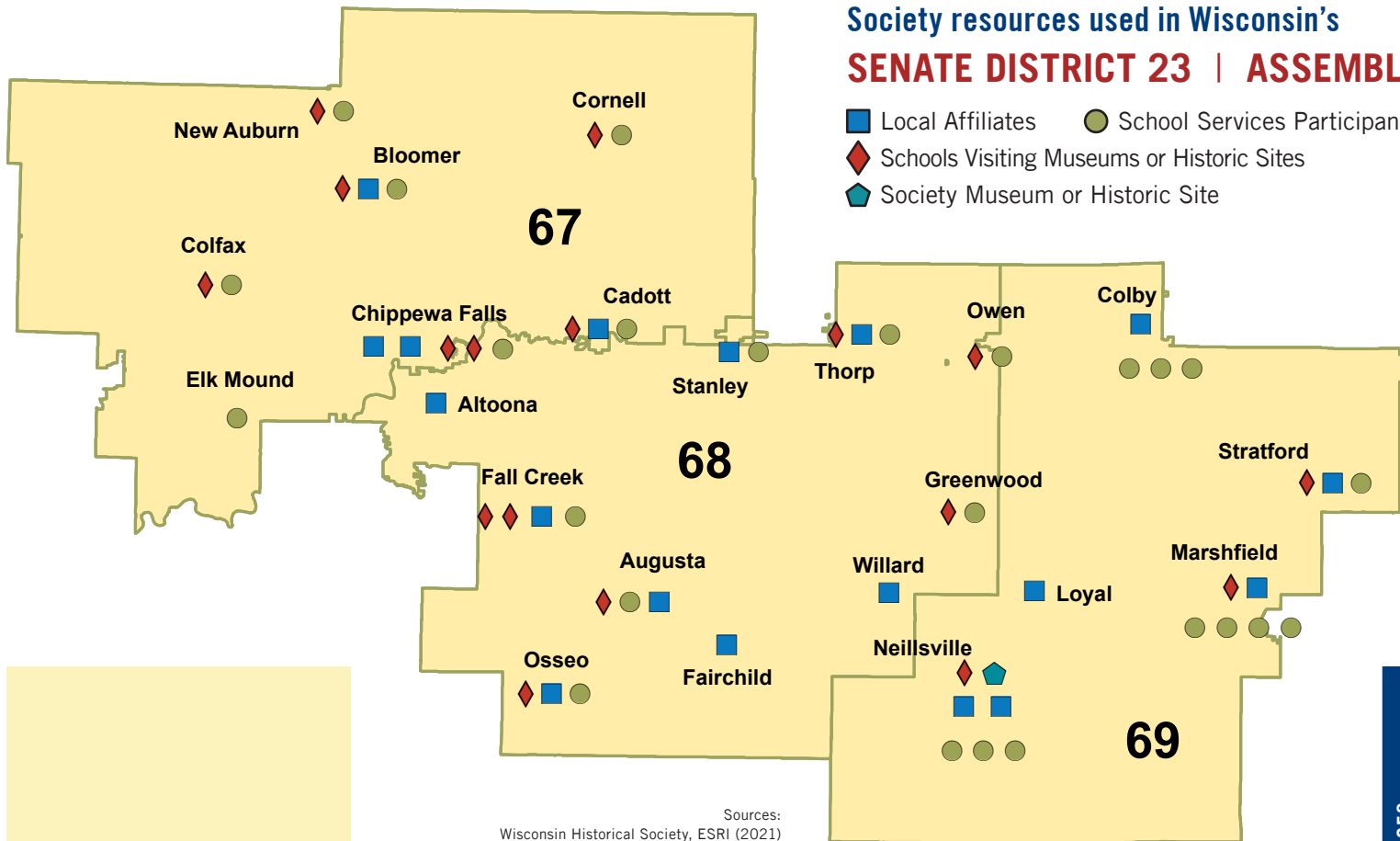
Students participated in National History Day or visited a museum virtually

SCHOOL SERVICES

Due to the COVID-19 pandemic, in-person school visits and programming at the Society's 12 historic sites and museums were temporarily paused, with National History Day and some other programs pivoting to a virtual format. Most operations and outreach services are expected to return to normal service in 2022. This map shows virtual services (website sessions, Local History and Historic Preservation Conference participation) and school services (textbook use, virtual school visits, virtual National History Day participation) delivered July 1, 2020 – June 30, 2021.

# HOW WE SERVE YOUR DISTRICT

## Society resources used in Wisconsin's SENATE DISTRICT 23 | ASSEMBLY DISTRICTS 67-69



Sources:  
Wisconsin Historical Society, ESRI (2021)

1

Museum Site

6

Organizations represented  
at the virtual Wisconsin  
Local History Conference

18

Local History  
Affiliates served

12,272

Wisconsin Historical Society  
website sessions

SCHOOL SERVICES

1,039

Students used the  
Society's 4th-grade  
Wisconsin history  
textbook or visited a  
museum virtually

Due to the COVID-19 pandemic, in-person school visits and programming at the Society's 12 historic sites and museums were temporarily paused, with National History Day and some other programs pivoting to a virtual format. Most operations and outreach services are expected to return to normal service in 2022. This map shows virtual services (website sessions, Local History and Historic Preservation Conference participation) and school services (textbook use, virtual school visits, virtual National History Day participation) delivered July 1, 2020 – June 30, 2021.

# HOW WE SERVE YOUR DISTRICT

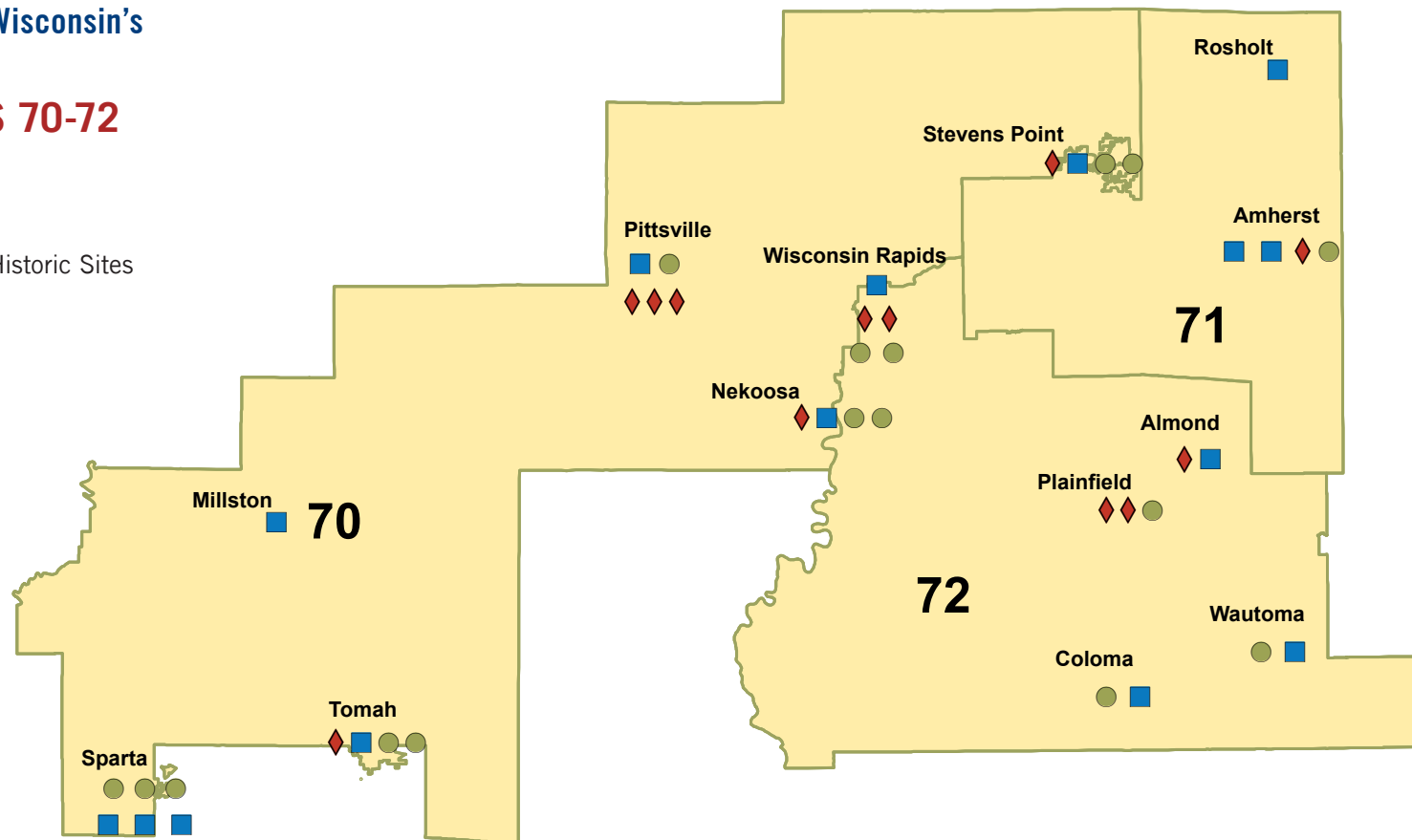
## Society resources used in Wisconsin's SENATE DISTRICT 24 ASSEMBLY DISTRICTS 70-72

- Local Affiliates
- School Services Participants
- ◆ Schools Visiting Museums or Historic Sites
- ★ Area Research Center



WISCONSIN  
HISTORICAL  
SOCIETY

Sources:  
Wisconsin Historical Society,  
ESRI (2021)



**13**

Organizations represented  
at the virtual Wisconsin  
Local History Conference

**15**

Local History  
Affiliates served

**34,286**

Wisconsin Historical Society  
website sessions

SCHOOL SERVICES

**2,195**

Students used the Society's 4th-grade Wisconsin history textbook, participated in National History Day, or visited a museum virtually

Due to the COVID-19 pandemic, in-person school visits and programming at the Society's 12 historic sites and museums were temporarily paused, with National History Day and some other programs pivoting to a virtual format. Most operations and outreach services are expected to return to normal service in 2022. This map shows virtual services (website sessions, Local History and Historic Preservation Conference participation) and school services (textbook use, virtual school visits, virtual National History Day participation) delivered July 1, 2020 – June 30, 2021.

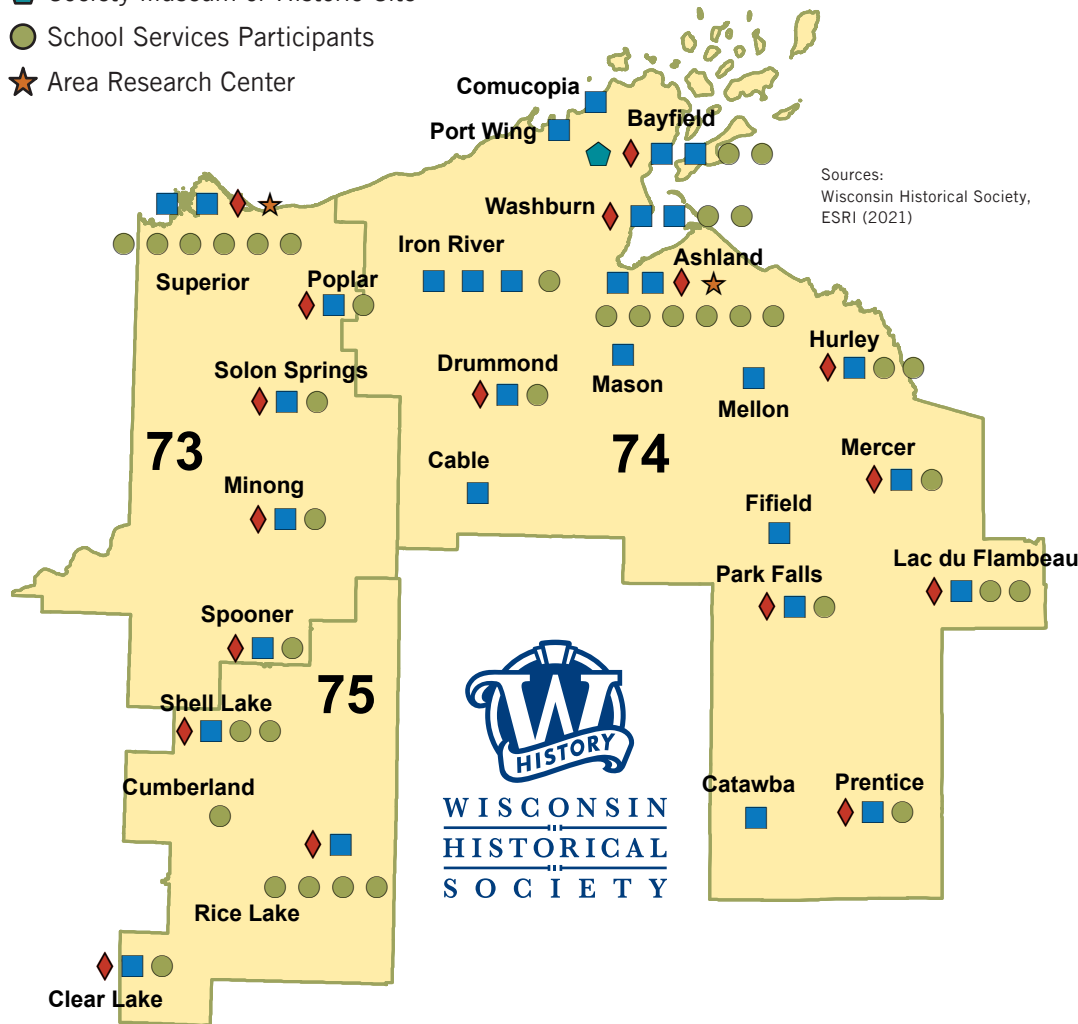


# HOW WE SERVE YOUR DISTRICT

Society resources used in Wisconsin's

**SENATE DISTRICT 25 | ASSEMBLY DISTRICTS 73-75**

- Local Affiliates
- ◆ Schools Visiting Museums or Historic Sites
- ◆ Society Museum or Historic Site
- School Services Participants
- ★ Area Research Center



1

Museum Site

2

Area Research Centers

15

Organizations represented  
at the virtual Wisconsin  
Local History Conference

32

Local History  
Affiliates served

13,822

Wisconsin Historical Society  
website sessions

SCHOOL SERVICES

1,187

Students used the  
Society's 4th-grade  
Wisconsin history  
textbook or visited a  
museum virtually

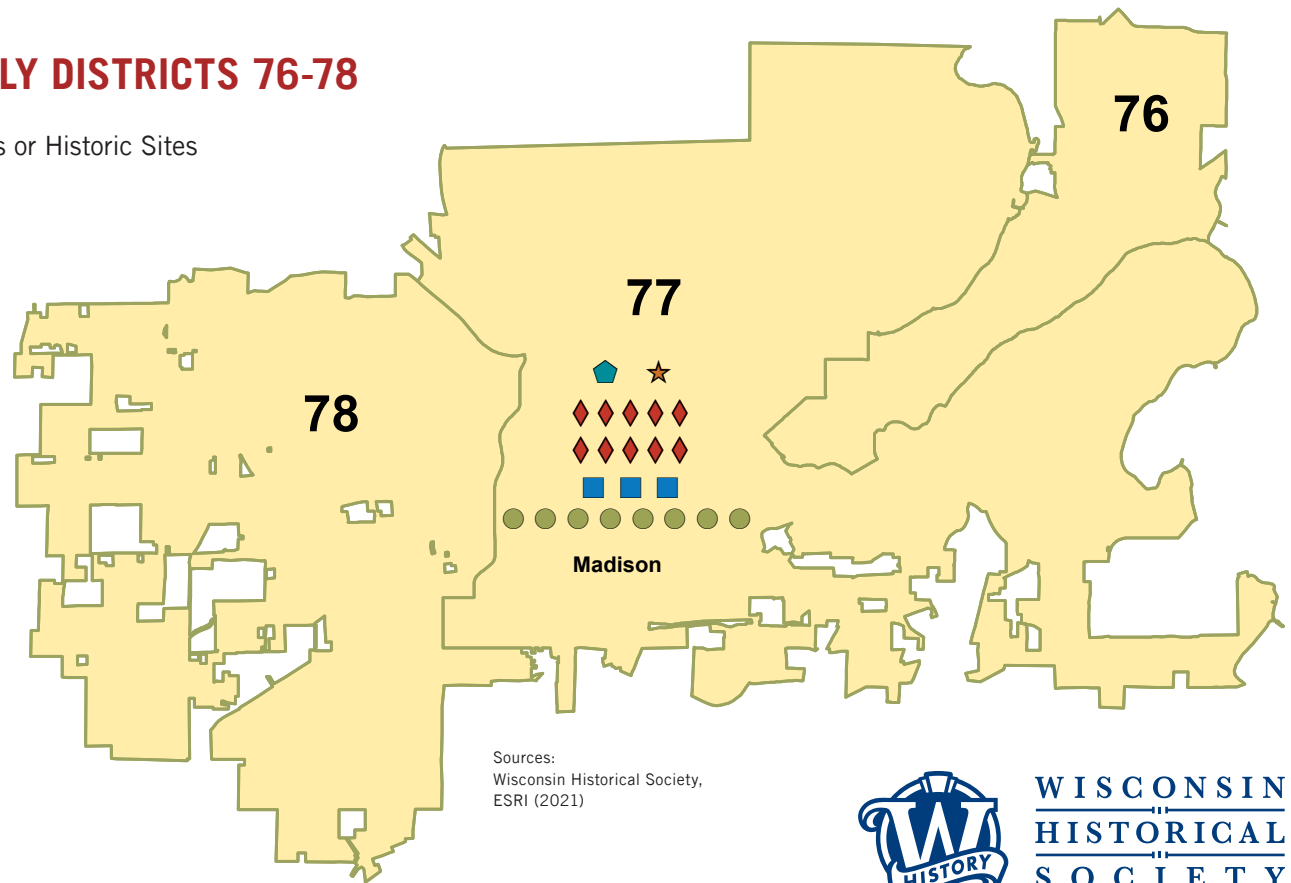
Due to the COVID-19 pandemic, in-person school visits and programming at the Society's 12 historic sites and museums were temporarily paused, with National History Day and some other programs pivoting to a virtual format. Most operations and outreach services are expected to return to normal service in 2022. This map shows virtual services (website sessions, Local History and Historic Preservation Conference participation) and school services (textbook use, virtual school visits, virtual National History Day participation) delivered July 1, 2020 – June 30, 2021.

# HOW WE SERVE YOUR DISTRICT

Society resources used in Wisconsin's

**SENATE DISTRICT 26 | ASSEMBLY DISTRICTS 76-78**

- Local Affiliates
- ◆ Schools Visiting Museums or Historic Sites
- ◆ Society Museum or Historic Site
- School Services Participants
- ★ Area Research Center



Sources:  
Wisconsin Historical Society,  
ESRI (2021)



**1**  
Area Research Center

**1**  
Museum Site

**3**  
Local History Affiliates served

**23**  
Organizations represented at the virtual Wisconsin Local History Conference

**205,502**  
Wisconsin Historical Society website sessions

**2,052**  
Students used the Society's 4th-grade Wisconsin history textbook, participated in National History Day, or visited a museum virtually

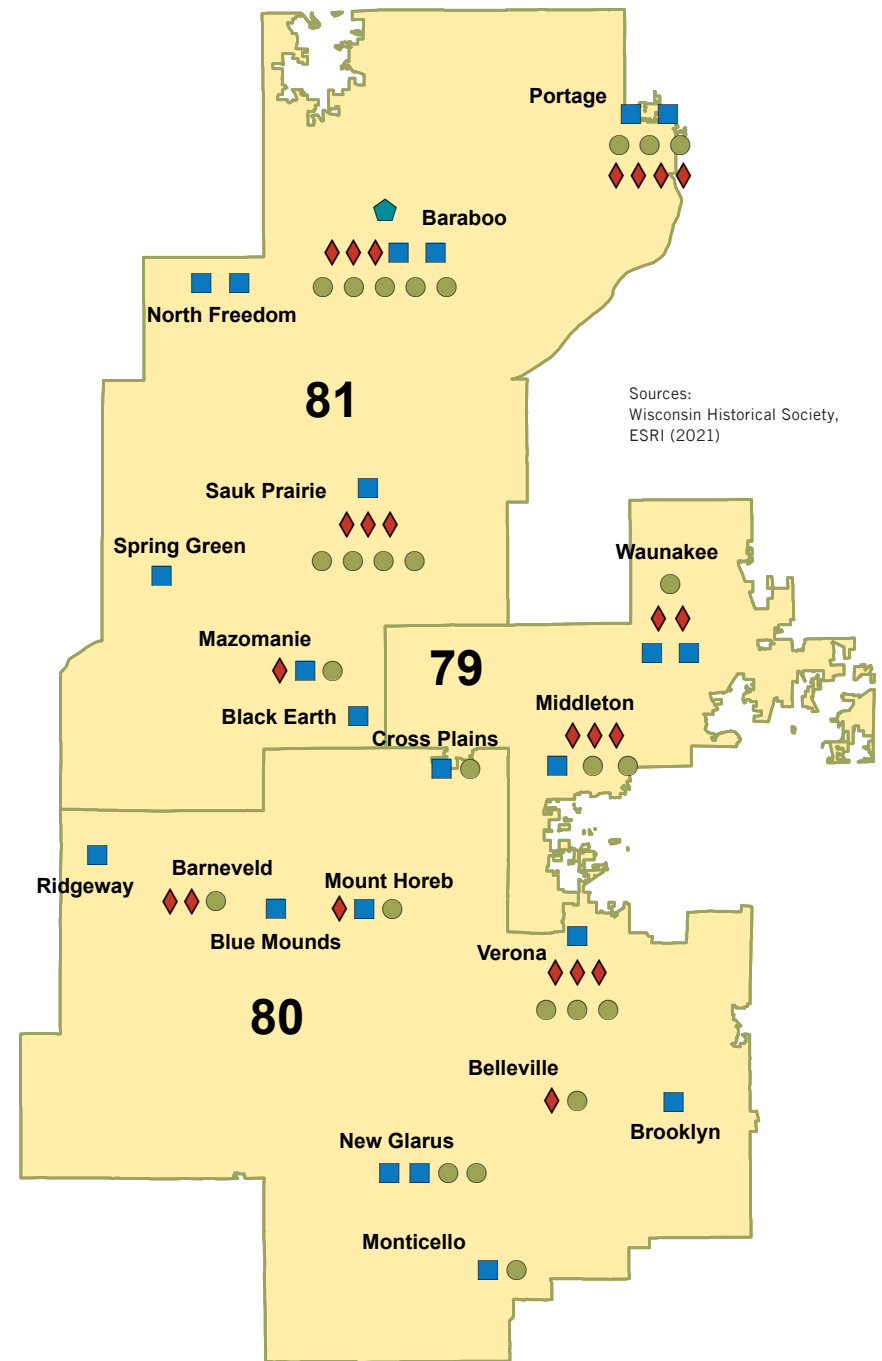
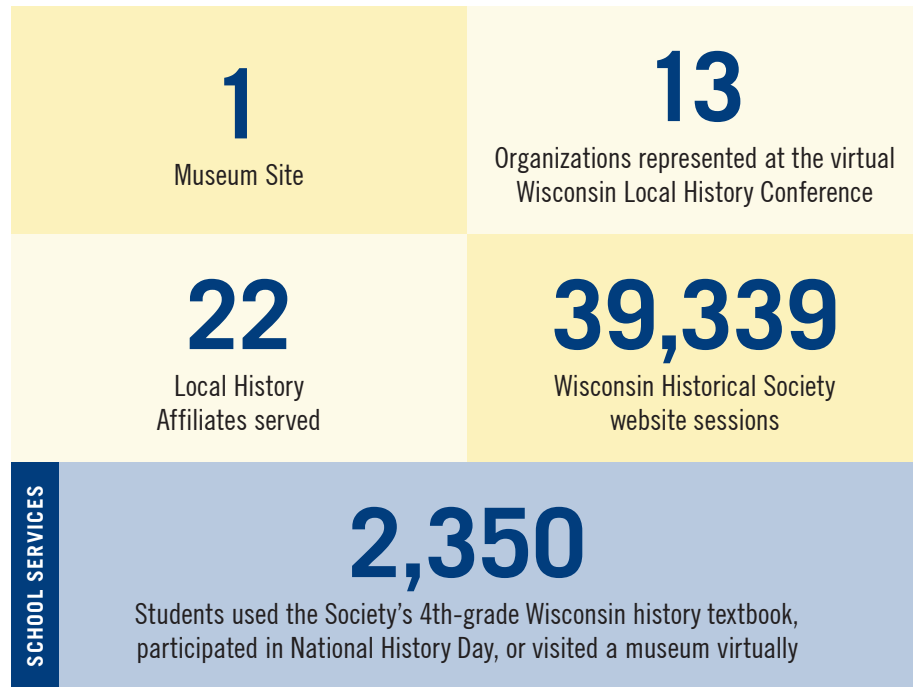
SCHOOL SERVICES

Due to the COVID-19 pandemic, in-person school visits and programming at the Society's 12 historic sites and museums were temporarily paused, with National History Day and some other programs pivoting to a virtual format. Most operations and outreach services are expected to return to normal service in 2022. This map shows virtual services (website sessions, Local History and Historic Preservation Conference participation) and school services (textbook use, virtual school visits, virtual National History Day participation) delivered July 1, 2020 – June 30, 2021.

# HOW WE SERVE YOUR DISTRICT

Society resources used in Wisconsin's  
**SENATE DISTRICT 27**  
**ASSEMBLY DISTRICTS 79-81**

- Local Affiliates
- School Services Participants
- ◆ Schools Visiting Museums or Historic Sites
- ◆ Society Museum or Historic Site



Due to the COVID-19 pandemic, in-person school visits and programming at the Society's 12 historic sites and museums were temporarily paused, with National History Day and some other programs pivoting to a virtual format. Most operations and outreach services are expected to return to normal service in 2022. This map shows virtual services (website sessions, Local History and Historic Preservation Conference participation) and school services (textbook use, virtual school visits, virtual National History Day participation) delivered July 1, 2020 – June 30, 2021.

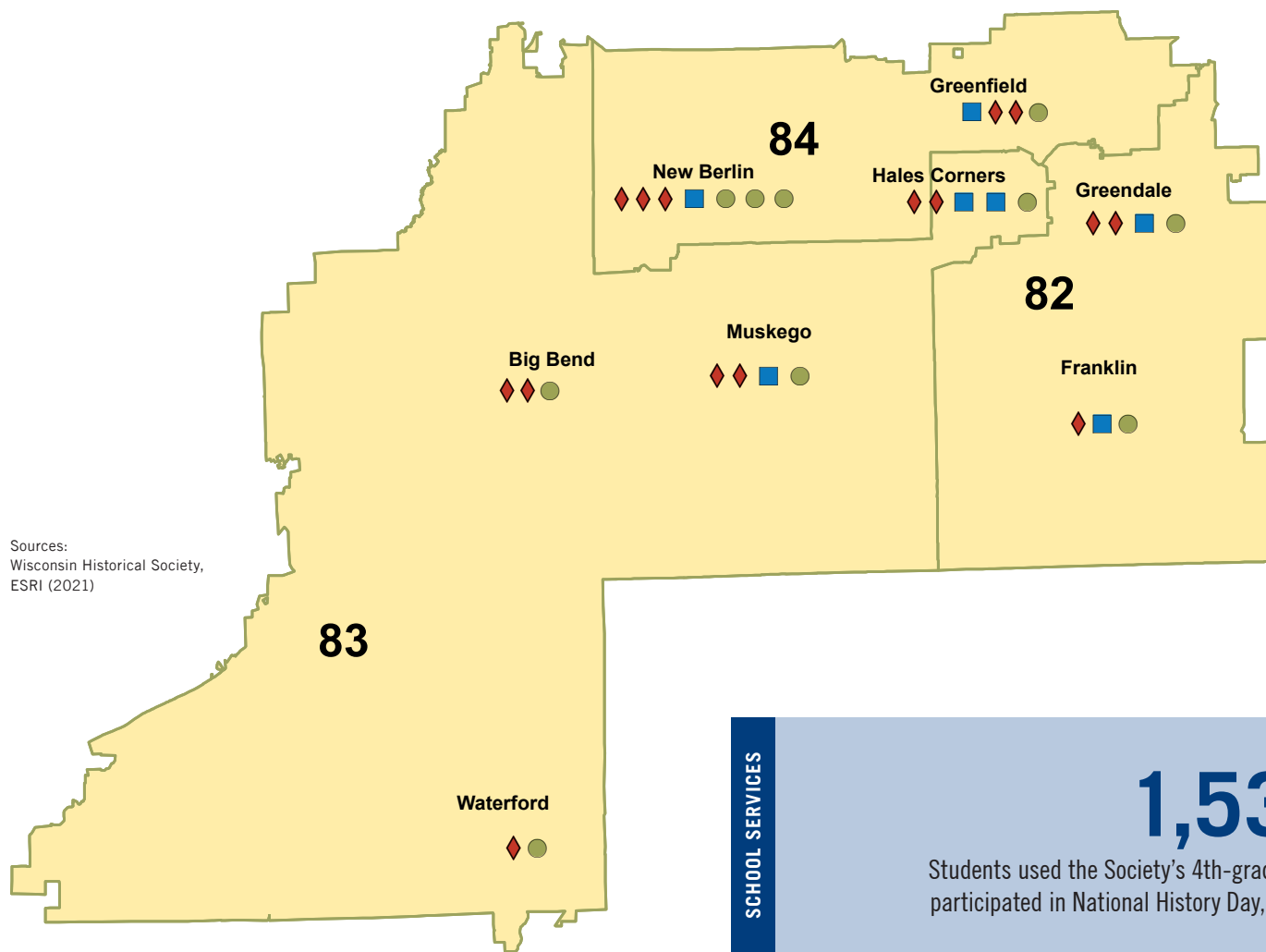
# HOW WE SERVE YOUR DISTRICT



WISCONSIN  
HISTORICAL  
SOCIETY

Society resources used in Wisconsin's  
**SENATE DISTRICT 28**  
**ASSEMBLY DISTRICTS 82-84**

- Local Affiliates
- School Services Participants
- ◆ Schools Visiting Museums or Historic Sites



Sources:  
Wisconsin Historical Society,  
ESRI (2021)

**2**  
Organizations represented  
at the virtual Wisconsin  
Local History Conference

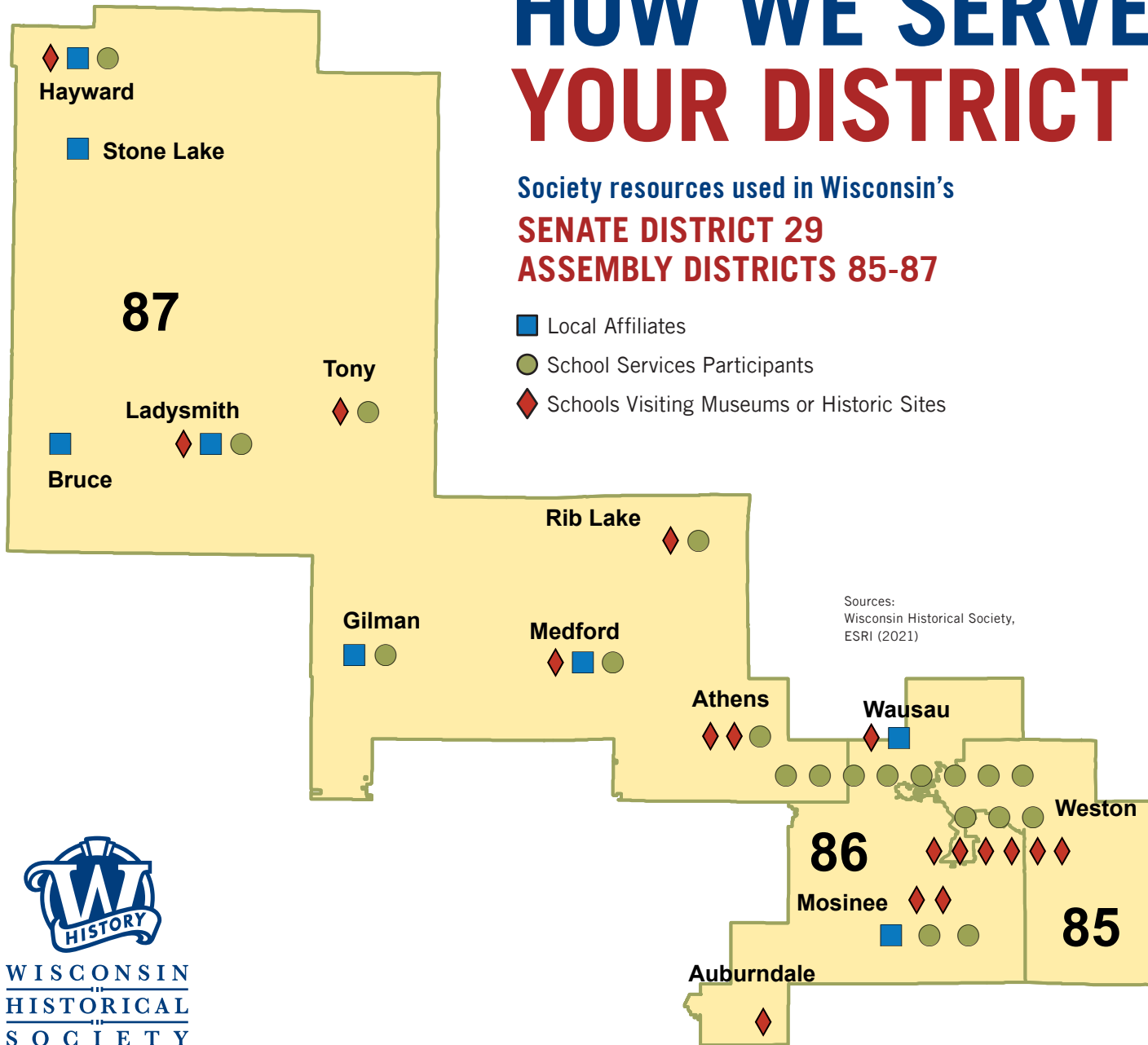
**7**  
Local History  
Affiliates served

**25,617**  
Wisconsin Historical Society  
website sessions

**SCHOOL SERVICES**  
**1,538**  
Students used the Society's 4th-grade Wisconsin history textbook,  
participated in National History Day, or visited a museum virtually

Due to the COVID-19 pandemic, in-person school visits and programming at the Society's 12 historic sites and museums were temporarily paused, with National History Day and some other programs pivoting to a virtual format. Most operations and outreach services are expected to return to normal service in 2022. This map shows virtual services (website sessions, Local History and Historic Preservation Conference participation) and school services (textbook use, virtual school visits, virtual National History Day participation) delivered July 1, 2020 – June 30, 2021.

# HOW WE SERVE YOUR DISTRICT



**3**  
Organizations represented at the virtual Wisconsin Local History Conference

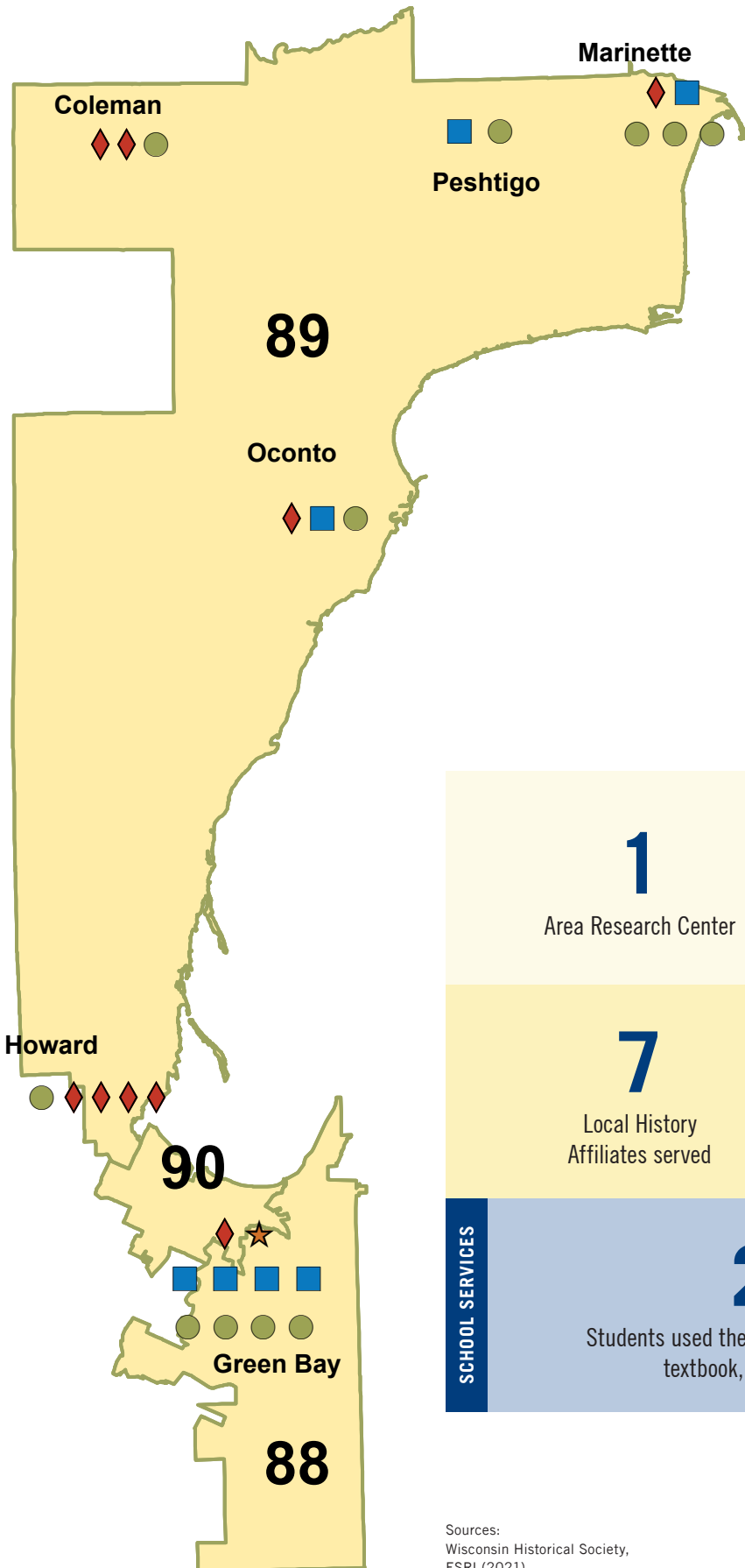
**8**  
Local History Affiliates served

**17,769**  
Wisconsin Historical Society website sessions

**2,481**  
Students used the Society's 4th-grade Wisconsin history textbook, or visited a museum virtually

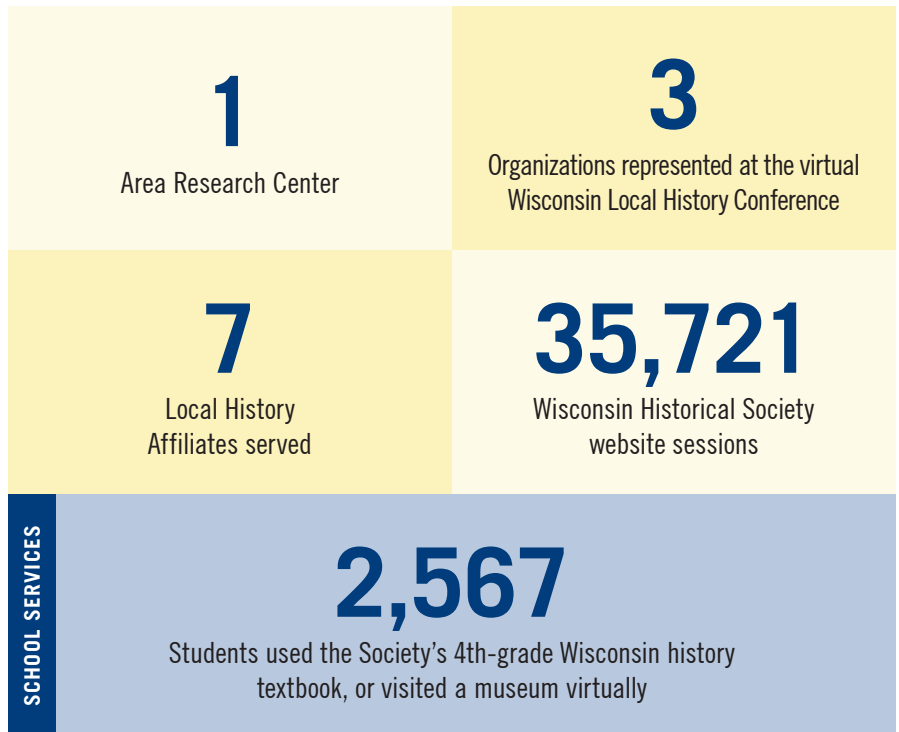
Due to the COVID-19 pandemic, in-person school visits and programming at the Society's 12 historic sites and museums were temporarily paused, with National History Day and some other programs pivoting to a virtual format. Most operations and outreach services are expected to return to normal service in 2022. This map shows virtual services (website sessions, Local History and Historic Preservation Conference participation) and school services (textbook use, virtual school visits, virtual National History Day participation) delivered July 1, 2020 – June 30, 2021.

# HOW WE SERVE YOUR DISTRICT



## Society resources used in Wisconsin's SENATE DISTRICT 30 ASSEMBLY DISTRICTS 88-90

- Local Affiliates
- School Services Participants
- ◆ Schools Visiting Museums or Historic Sites
- ★ Area Research Center



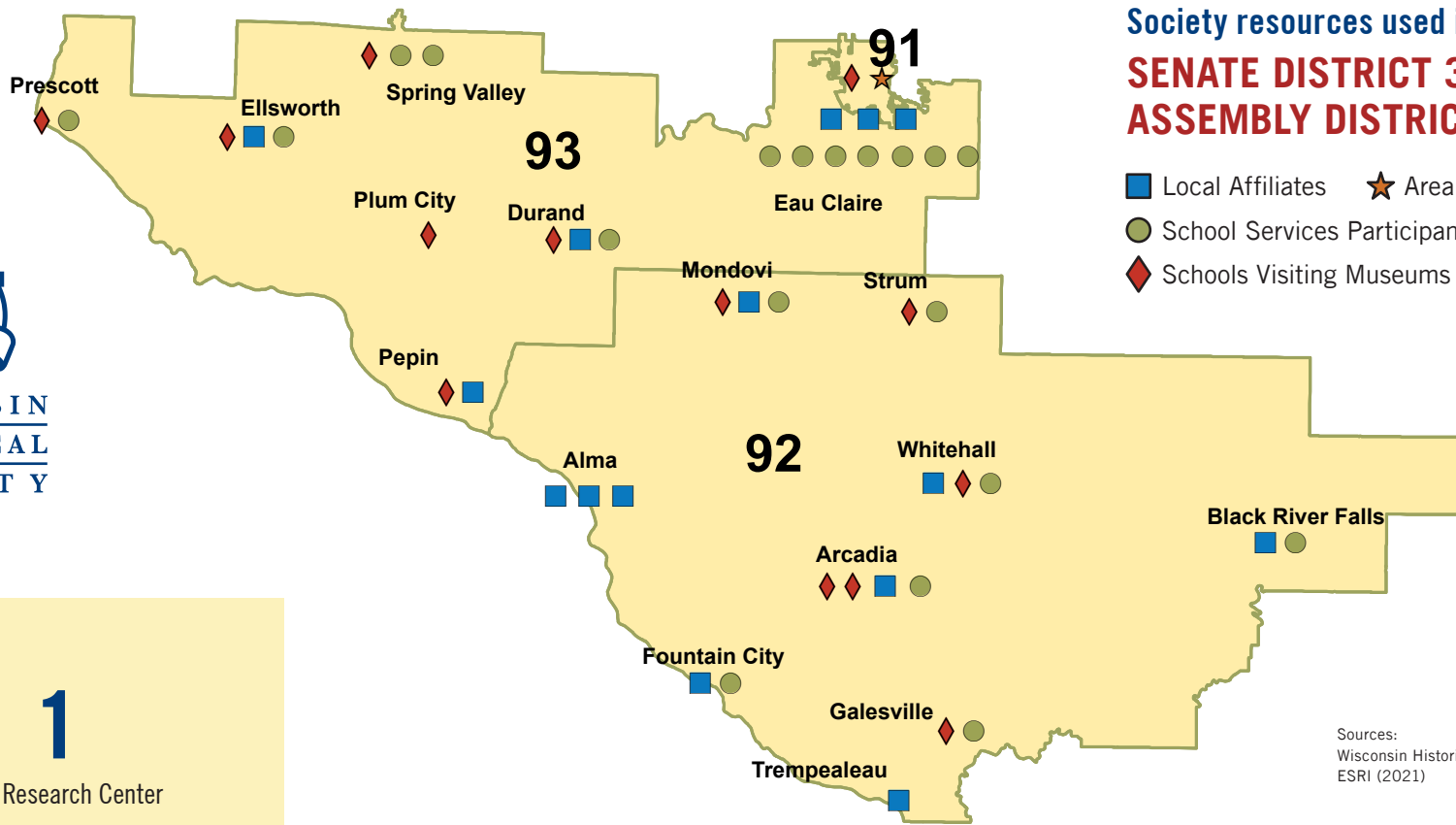
Sources:  
Wisconsin Historical Society,  
ESRI (2021)



**WISCONSIN  
HISTORICAL  
SOCIETY**

Due to the COVID-19 pandemic, in-person school visits and programming at the Society's 12 historic sites and museums were temporarily paused, with National History Day and some other programs pivoting to a virtual format. Most operations and outreach services are expected to return to normal service in 2022. This map shows virtual services (website sessions, Local History and Historic Preservation Conference participation) and school services (textbook use, virtual school visits, virtual National History Day participation) delivered July 1, 2020 – June 30, 2021.

# HOW WE SERVE YOUR DISTRICT



## Society resources used in Wisconsin's SENATE DISTRICT 31 ASSEMBLY DISTRICTS 91-93

- Local Affiliates
- Area Research Center
- School Services Participants
- Schools Visiting Museums or Historic Sites

Sources:  
Wisconsin Historical Society,  
ESRI (2021)

1

Area Research Center

6

Organizations represented at the virtual Wisconsin Local History Conference

15

Local History Affiliates served

26,281

Wisconsin Historical Society website sessions

SCHOOL SERVICES

1,621

Students used the Society's 4th-grade Wisconsin history textbook

Due to the COVID-19 pandemic, in-person school visits and programming at the Society's 12 historic sites and museums were temporarily paused, with National History Day and some other programs pivoting to a virtual format. Most operations and outreach services are expected to return to normal service in 2022. This map shows virtual services (website sessions, Local History and Historic Preservation Conference participation) and school services (textbook use, virtual school visits, virtual National History Day participation) delivered July 1, 2020 – June 30, 2021.

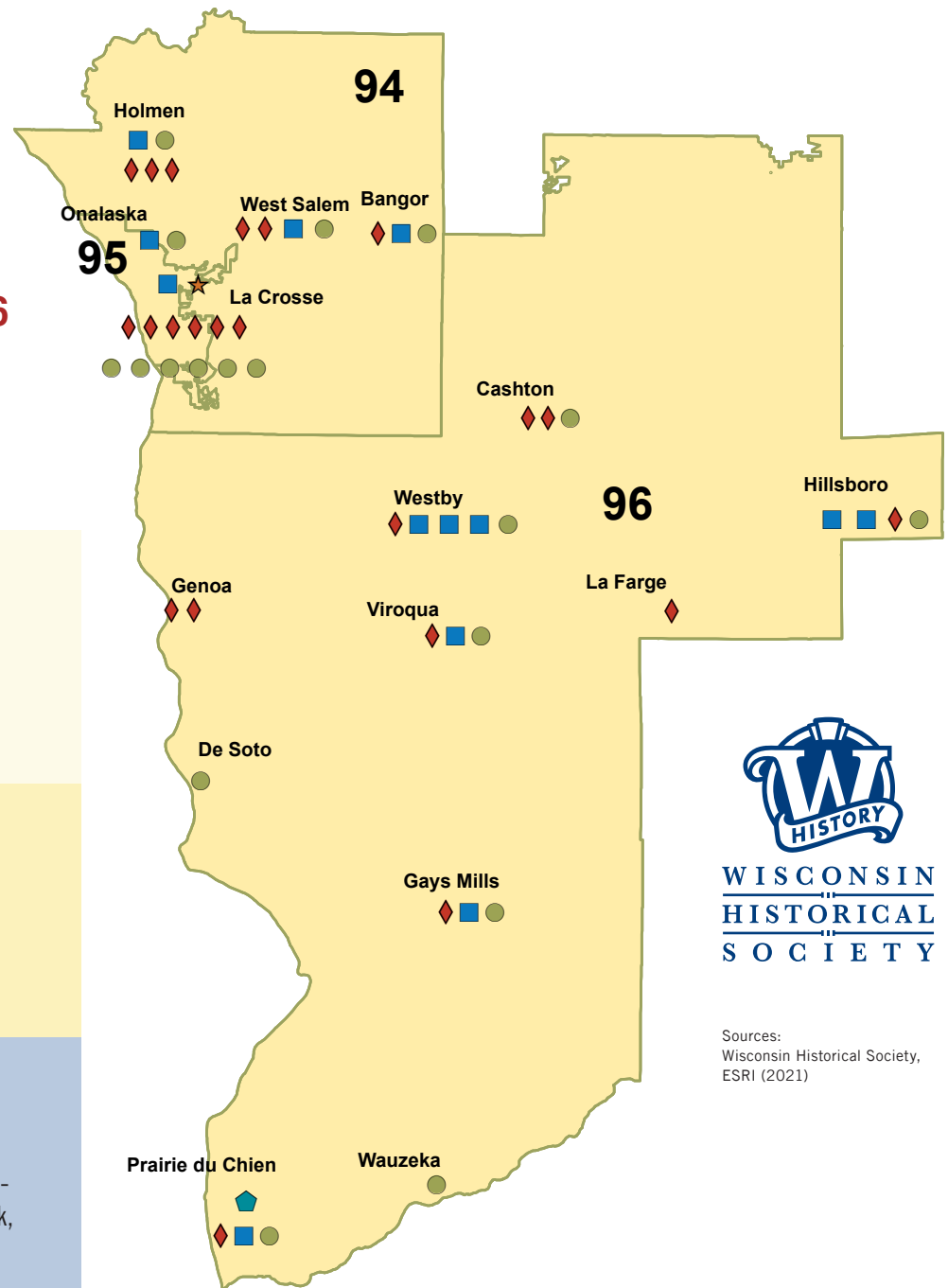
# HOW WE SERVE YOUR DISTRICT

Society resources used in Wisconsin's  
**SENATE DISTRICT 32 | ASSEMBLY DISTRICTS 94-96**

- Local Affiliates
- ★ Area Research Center
- School Services Participants
- ◆ Society Museum or Historic Site
- ◆ Schools Visiting Museums or Historic Sites



SCHOOL SERVICES



**WISCONSIN  
 HISTORICAL  
 SOCIETY**

Sources:  
 Wisconsin Historical Society,  
 ESRI (2021)

Due to the COVID-19 pandemic, in-person school visits and programming at the Society's 12 historic sites and museums were temporarily paused, with National History Day and some other programs pivoting to a virtual format. Most operations and outreach services are expected to return to normal service in 2022. This map shows virtual services (website sessions, Local History and Historic Preservation Conference participation) and school services (textbook use, virtual school visits, virtual National History Day participation) delivered July 1, 2020 – June 30, 2021.



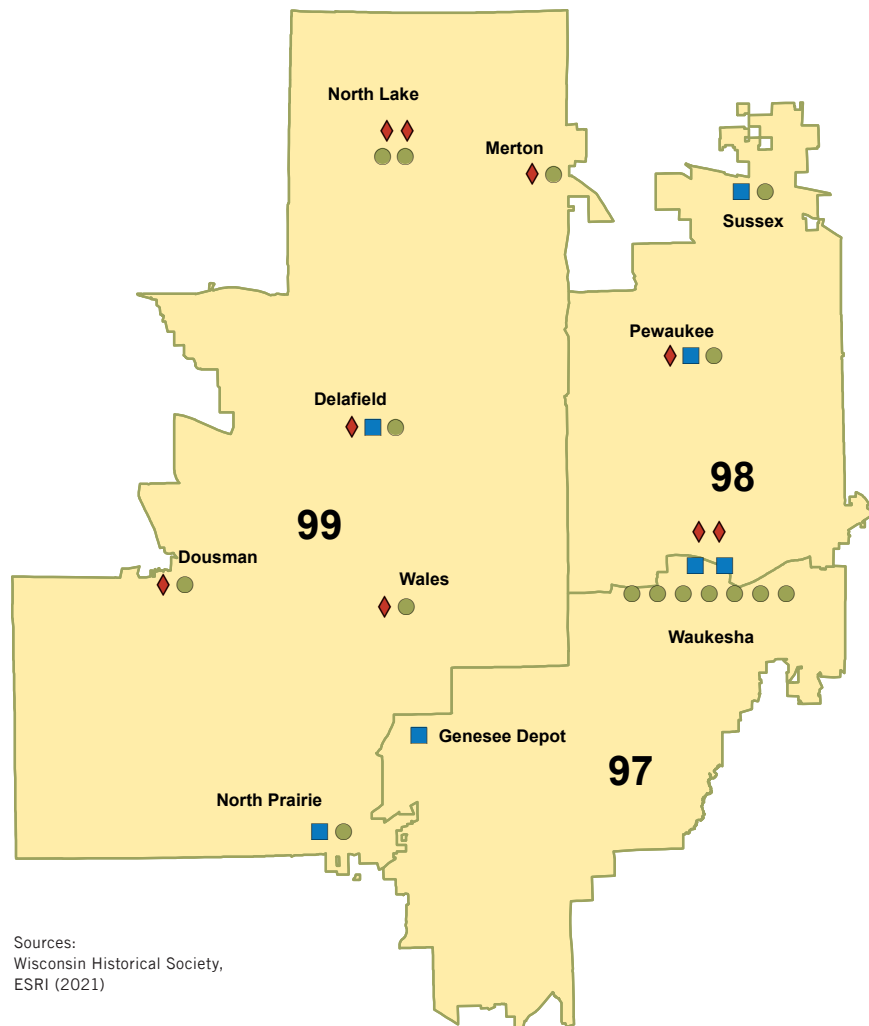
# HOW WE SERVE YOUR DISTRICT



WISCONSIN  
HISTORICAL  
SOCIETY

Society resources used in Wisconsin's  
**SENATE DISTRICT 33**  
**ASSEMBLY DISTRICTS 97-99**

- Local Affiliates
- School Services Participants
- ◆ Schools Visiting Museums or Historic Sites



Sources:  
Wisconsin Historical Society,  
ESRI (2021)



Due to the COVID-19 pandemic, in-person school visits and programming at the Society's 12 historic sites and museums were temporarily paused, with National History Day and some other programs pivoting to a virtual format. Most operations and outreach services are expected to return to normal service in 2022. This map shows virtual services (website sessions, Local History and Historic Preservation Conference participation) and school services (textbook use, virtual school visits, virtual National History Day participation) delivered July 1, 2020 – June 30, 2021.