



A Gift for the Future

Longtime Society supporters Ruth and Hartley Barker have made a significant and historic financial commitment to the Society's future. Their recent \$2.5 million gift endows the position of the Society's director, which has been named the Ruth and Hartley Director of the Wisconsin Historical Society, and is the largest contribution ever made to the Society. The Barkers' gift is a measure of their faith in the institution and a signal of the Society's importance to Wisconsin as well as the importance of Wisconsin's history to its well-being.

The Barkers were both raised in Wisconsin Rapids and attended the University of Wisconsin-Madison. They married in 1950 after Hartley's return from military service overseas and had four daughters. Ruth and Hartley currently divide their time between Ephraim, Wisconsin and Scottsdale, Arizona.

The Barkers credit their parents with instilling in them a sense of the importance of philanthropy. "We've been very fortunate economically, and we feel it's important to give," they said in a statement. "Our parents gave to various charities and were also involved with their communities. You can't take it with you, so you should do something with it."

Both Barkers have certainly taken that message to heart. Ruth currently serves on the Society's Board of Curators and Hartley is an emeritus director of the Wisconsin Historical Foundation Board of Directors. Ruth announced the gift on their mutual behalf at the fall Board of Curators meeting in La Crosse, drawing a standing ovation.

"We feel this gift is a vote of confidence in the Society's leadership and mission as well as its recent emergence into a more outward, service-oriented organization," said Ruth Barker at a recent Board of Curator's meeting.

The Society's current director, Ellsworth Brown, said the Barkers' generous gift encourages others to recognize and sustain the Society's important work. "For 160 years, the Wisconsin Historical Society has worked diligently to collect, preserve and share the history of Wisconsin and North America," said Brown. "With the support of people like Ruth and Hartley Barker, the Society looks forward with confidence."



Justin Bomberg

Society Director Ellsworth Brown (center) with Ruth and Hartley Barker

 *Connect to your past, visit* www.wisconsinhistory.org 



5 Image galleries from Wisconsin Historical Images



9 Digital Milestones



11 On the road with National History Day 2007

From the Director

Ellsworth H. Brown

In this issue of Columns you will read about Ruth and Hartley Barker's remarkable gift to endow the directorship of the Wisconsin Historical Society. There are several things that I would like to share with you about this generous act.

First, all of us at the Society—staff and board—are proud that the director's position has been endowed and named. It is the first Society position ever to be named, and we hope that it sets a precedent and encourages others to do the same. I know that this example is one of the Barkers' intentions. When the Board of Curators took the formal action to name the position, it was with the realization that at the grand and mature age of 161 years, the Society has now reached a different kind of maturity that is as symbolic as it is practical.

Second, Ruth and Hartley's act is part of a long and selfless Wisconsin tradition that is sometimes quiet and unnoticed, at other times celebrated, but always evident. In the Barkers' case, this is not their first gift, even to us . . . they continue to be leading annual fund donors, as well as contributors of their time.

Others have benefited from the inheritance and sale of a business that Ruth and Hartley have pooled for the public good, too, not least by their support of the Community Foundation of South Wood County. I also happen to know that the small diamonds in the Rotary International pins Hartley wears on his lapel stand for contributions that have made him a multiple Rotary Paul Harris Fellow as well as leader. And both Ruth and Hartley have been significant figures in the philanthropic health of both Ephraim and Scottsdale, Arizona, particularly on behalf of the Boys and Girls Club.

Third, their giving is part of a larger tradition of philanthropy as expressed by Wisconsin's Mead family, of which Ruth is a part. Ruth and her cousin, Gilbert Mead, began and continue to fund the Community Progress Initiative in Wisconsin Rapids. And one of Ruth's cousins is completing a personal pledge of \$100,000 to help Circus World Museum. Family traditions are, in this case, a powerful force for the well-being of Wisconsin's cultural and historical life.

Fourth, we should all recognize, as the Barkers have, that the kind of help we receive from them, as well as the assistance we receive from many of you, is necessary to the success of this wonderful agency. State funds comprise sixty percent of our annual budget of \$18 million, but the rest comes from grants, earned income, and the kindness of friends and members.

Fifth, although the financial arrangements surrounding the Barkers' gift benefit the Wisconsin Historical Society, they are made with the Wisconsin Historical Foundation, a non-profit organization that works in complete harmony with the Society to raise and invest funds on the Society's behalf. Without the Foundation staff's competent and enthusiastic work and the support of its Board of Directors, our success would be a shadow of its current dimension.

And finally, I would like the Barkers and all of you to know that I am proud to be, with gratitude,



—Ellsworth H. Brown
Ruth and Hartley Barker Director
Wisconsin Historical Society

COLUMNS



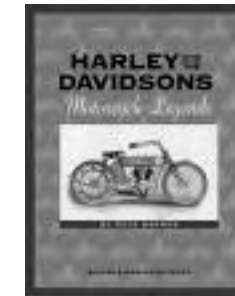
Published bimonthly by the Wisconsin Historical Society, 816 State Street, Madison, WI 53706-1482. Erika Janik, editor; Roberta H. Couillard, designer. Distributed to members as part of their dues. (Individual membership for one person is \$40; family membership, \$50; senior citizen individual membership, \$30; senior citizen family, \$40; institutional, \$65). Wisconsin newspapers may reprint any article provided credit is given to the Wisconsin Historical Society and *Columns*. For membership information or change of address, write to the Membership Coordinator. Address all other inquiries to the editor, *Columns*. Periodicals postage paid at Madison, Wisconsin.

New Books for Young Readers

Harley and the Davidsons: Motorcycle Legends

On a summer afternoon in Milwaukee in 1891, 10-year-old Arthur Davidson and his best friend Bill Harley imagined a bicycle that could zoom up hills and get them around more quickly. Little did they know that in 20 years, this dream would make them the stuff of legend. With grit, determination, and not a little elbow grease, Bill Harley and the Davidson brothers—Arthur, William, and Walter—created a motorcycle that was more powerful and more popular than any other machine on the road.

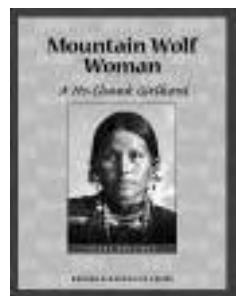
In *Harley and the Davidsons*, author Pete Barnes tells the story of four young inventors who shared a dream: to create the best motorized bicycle in America. Their turn-of-the-century aspirations took them from a backyard machine shop to a highly successful business empire, all in the span of just a few years. Using their engineering and machine-shop expertise, Harley and the Davidsons worked to continually perfect their designs and to present the best possible products to the American public. Along the way they made their mark on the racing circuit and introduced safety measures that continue to this day. After their deaths, their sons and daughters carried on this legacy, buying back the company after it changed hands and re-establishing Harley-Davidson as the king of the motorcycle world. From the old Knucklehead, Panhead and Shovelhead motors to the Evolution, Revolution and Twin Cam engines that followed, the story of Harley and the Davidsons remains one of the great success stories of the twentieth century.



Mountain Wolf Woman: A Ho-Chunk Girlhood

When Mountain Wolf Woman was born around Black River Falls in April 1884, Wisconsin had only been a state for 36 years. Yet Mountain Wolf Woman's people, the Ho-Chunk Nation, had lived in the area for hundreds, if not thousands, of years, living in much the same way as they had for centuries. But in some ways, Mountain Wolf Woman's life was very different, as young readers will discover as they read about what life was like for a young Ho-Chunk girl in the late 19th and early 20th centuries in *Mountain Wolf Woman: A Ho-Chunk Girlhood*.

Using the seasons of the year as a backdrop, author Diane Holliday describes the movement of Mountain Wolf Woman and her family in and around Wisconsin. Like many Ho-Chunk people in the mid-1800s, Mountain Wolf Woman's family was displaced to Nebraska by the U.S. government. They later returned to Wisconsin but continued to relocate as the seasons changed to gather and hunt food. Drawn from her own autobiography as told to anthropologist Nancy Lurie, Mountain Wolf Woman's own words are used throughout the story to capture her childhood feelings and memories. Mountain Wolf Woman's story invites readers to think about how the lives of their ancestors and Mountain Wolf Woman's over 100 years ago compares to how they live their lives today.



Harley and the Davidsons and *Mountain Wolf Woman* are the two newest titles in the Badger Biographies Series, a series of books designed to help upper-elementary and middle-school readers explore the stories of real Wisconsin people. To learn more about these books as well as the other books in the series, visit www.wisconsinhistory.org or contact the Wisconsin Historical Museum Shop at (608) 264-6565 or toll-free at (888)999-1669.

What was YOUR favorite toy?

The Society wants to know about your favorite childhood toy. Was it a teddy bear, a push toy, or a doll? Was it a popular brand-name toy or game like Scrabble, G.I. Joe, or Strawberry Shortcake? Or was it a homemade toy?

As a part of the Wisconsin Historical Museum's newest exhibit, *Toy Stories*, the Society is collecting reminiscences of childhood play. Visitors can share their stories by writing them in a binder or entering them into a computer. Web visitors are asked to submit their stories in an online form, at www.wisconsinhistory.org/museum/exhibits/toys. Selected stories will appear on the Society's Web site and all the stories will be added to the Society's archival holdings for future generations to read.

To "prime the pump," the Society asked dozens of notable Wisconsinites to share their stories. Here's one from TV host, author and educator Patty Loew:

"My favorite toy was the toy ukulele I received as a Christmas present in 1960. My parents were notoriously early holiday shoppers, so I would

begin gift hunting in late fall. I got home from school at 3:25, while they got home at 4:00, so I had a 35-minute "mischief" window. That year, I found the ukulele, along with a "how-to" book, under their bed. I began practicing from mid-November until Christmas Eve when I opened the box containing the ukulele, feigned surprise, and, much to their amazement, played a near-flawless rendition of "She'll Be Comin' Round the Mountain." But it gets better. They were so proud of their "musical prodigy," they went out and bought me a guitar!"



Read more stories and add your own memories of toys past and present at the *Toy Stories* exhibit. The exhibit runs through May 26, 2007 at the Wisconsin Historical Museum.

Save the Date!

The 2nd Annual Wisconsin History Makers Gala

The 2007 Wisconsin History Makers Gala is set for Tuesday, May 23rd, at the Pfister Hotel in Milwaukee. This 2nd annual event honors living leaders with ties to Wisconsin who have made history in their own time. Five individuals will be honored by the Society for their accomplishments at the event. We invite you to join us in celebrating their contributions to history. Check www.wisconsinhistory.org in the coming weeks for the announcement of the 2007 award recipients.

Last year's inaugural gala was an overwhelming success and we're certain that history will repeat itself in 2007. More than 300 people enjoyed an evening that was both entertaining and inspirational. Don't miss the opportunity to make history by being part of this year's illustrious event. For the

rest of your life, you can say, "I was there on that special night!"

Tickets are \$150 each. To order tickets by mail, please enclose a check made out to the Wisconsin Historical Foundation for the total amount and mail it to:

Wisconsin Historical Foundation
Attn: Ann Fisher
816 State Street
Madison, WI 53706

To order by phone or by credit card, please contact Ann Fisher at 608-261-9364.



Spring 2007 Genealogy Classes and Workshops

REGISTER NOW! The Society Library-Archives is proud to offer another season of classes on special topics in genealogical research. The very knowledgeable Library and Archives staff and guest lecturer will present programs that focus on collections and research techniques.

March 3, 2007

Oh Darned! Where Did I Put Uncle George? Organizing and Compiling Your Research. (Rick Pifer, Director of Reference and Public Services)

March 10, 2007

Tough Genealogy—Tips and tricks, Strategies and sources to help trace those impossible ancestors (Jim Hansen, Reference Librarian)

March 17, 2007

Norwegian Genealogy (Jerry Paulson, guest lecturer from the Norwegian American Genealogical Center)

April 7, 2007

Bringing the Past to the Present—How to Find Resources for Generations Since 1930 (Lori Bessler, Outreach Coordinator and Microforms Librarian)

April 14, 2007

Digital Retouching Demystified (Andy Kraushaar, Visual Materials Curator)

April 21, 2007

Using Ancestry and HeritageQuest (Dee Grimsrud, Reference Archivist)

Descriptions of each class can be found online at <http://www.wisconsinhistory.org/LIBRARYARCHIVES/CLASSES/>. To register or for more information, contact Lori Bessler at (608) 264-6536 or email Lori.Bessler@wisconsinhistory.org.

The Joy of Sticks! Retro-Arcade Week

A fundraiser at the Wisconsin Historical Museum
Friday, March 9th–Sunday March 18th

Test your retro gaming skills at our vintage video game arcade! Play your favorite games for only 25 cents each. Pac-Man, Donkey Kong, Space Invaders, Sea Wolf and Death Race are just some of the classic arcade games that await you. High-score setters may be eligible for prizes. All proceeds benefit the Wisconsin Historical Museum. Admission is by donation.

For more information, please call 608-264-6555, or visit us online at www.wisconsinhistory.org/museum



What's New in Wisconsin Historical Images

Larger Than Life: Tall-Tale Postcards

Photographer Alfred Stanley Johnson, Jr. specialized in the tall-tale postcard, extolling Wisconsin's agricultural abundance through images of mythic harvests and gargantuan animals. Staging his friends and family to pantomime story lines, Johnson added enlarged fruits, vegetables and animals to fit the background and included titles that attributed bountiful crops to local communities. Johnson's tall-tale postcards affirmed the American myth of abundance—a myth often at odds with reality.

Tall-tale postcards emerged around the turn-of-the-20th century, when postcards came to function as surrogates for travel. People soon realized that postcards could be used to create or sustain a certain utopian myth about a town or region, and crafty photographers began to physically manip-

ulate their photographs. Nowhere did these modified images, or "tall-tale postcards" as they came to be called, become more prevalent than in rural communities that hoped to forge an identity as places of agricultural abundance to encourage settlement and growth. Food sources specific to the region—vegetables, fruits, or fish—were the most common subjects. Johnson began making tall-tale photographs around 1908 in his Waupun studio, and worked for more than a decade to develop and fine-tune the genre.

The Tall-tale postcards collection is the latest in a series of Web galleries created from the Society's online image database, Wisconsin Historical Images (WHI). WHI provides a rich pictorial view of Wisconsin and U.S. history, including a variety of photographs, posters, paintings, and ephemera from the 19th and 20th centuries. New galleries are produced monthly to provide an introduction to the visual holdings found in the Archives of the Society. Interested in learning more about WHI's Web projects? Sign-up for monthly email updates at www.wisconsinhistory.org/whi/.

Did you know that you can purchase prints from the visual materials collections? Most images may be ordered directly from our Web site in custom sizes. WHI produces giclée print reproductions made from high resolutions scans of the original source material. All print sale proceeds directly benefit the acquisition, preservation and maintenance of the physical and online collections. For more information, contact Business Manager Lisa Hinzman at (608) 264-6475 or lisa.hinzman@wisconsinhistory.org.



Learn Something New this Spring

Remember when "spinning" meant turning wool rather than turning the pedals of a stationary bike? Reconnect with your past and expand your knowledge this spring by taking one of the many hands-on workshops at Old World Wisconsin. These aren't your usual workshop offerings either—unless by "usual" you mean blacksmithing, tating, wood stove cooking, Victorian

hair weaving, and English paper piecing. Old World Wisconsin workshops are an exciting and fun way to learn the customs, trades, and crafts practiced by 19th-century Wisconsin immigrants. Many courses use authentic tools and instructors help participants blend pioneer skills with some modern-day techniques. Registration is required for all classes and fees do apply. Contact Old World Wisconsin to register at (262) 594-6300 or email oww@wisconsinhistory.org.



Participants learn how to weave a basket

March 3	10AM-3:30PM	Beginning Spinning I
March 3	10AM-2PM	Victorian Hair Weaving
March 10	9AM-3PM	Care and Preservation of Photographs
March 10	10AM-2PM	Russian Punch Needle Embroidery
March 17	10AM-3:30PM	Basic Tatting I
March 17	10AM-3:30PM	Beginning Spinning I
March 24	10AM-3:30PM	Basic Tatting II
March 24	10AM-3:30PM	Beginning Knitting
March 31	10AM-3:30PM	Beginning Spinning II
March 31	10AM-2PM	Tussie Mussies and the Victorian Language of Flowers
April 14	9AM-3PM	Baked Goods and Bread Baking
April 14	9AM-4PM	Basket Weaving: Making a Market Basket
April 14	10AM-2:30PM	English Paper Piecing
April 14	9AM-1PM	Wood Stove Cooking
April 21	10AM-3:30PM	Beginning Spinning II
April 21	10AM-4PM	Intermediate 19th-century Blacksmithing
April 28	9AM-3PM	Baked goods and bread making
April 28	10AM-4PM	Intermediate 19th-century Blacksmithing

Local History Highlight The Neville Public Museum of Brown County

Located in the heart of Green Bay, the Neville Public Museum of Brown County celebrates the art, history, and science of Northeast Wisconsin and the Upper Peninsula of Michigan. Named for the Museum's first director, A.C. Neville, the Museum traces its roots back to 1915 when a group of local women put together a small exhibit in the Kellogg Public Library. The exhibit proved so popular that a Museum was formed in the library's basement. But the Museum quickly outgrew its space, and moved into its own building in 1927. In its early years, the Museum collected items from around the world but soon narrowed its focus to the history and culture of Northeastern Wisconsin.

Currently housed in a 58,000 square foot facility, the Neville contains two floors of permanent and changing exhibit galleries. Museum collections include over 2 million artifacts and photographs documenting the region's history. Important artifacts include a rare Revolutionary War era British officer's uniform worn by the "Father of Wisconsin," Charles Langlade, a soldier and fur trader. The Neville also holds "Perrot's Ostensorium," the earliest known artifact of European occupation, originally presented to the Jesuit mission at Green Bay by Nicolas Perrot in 1686. The Museum's

permanent exhibit, *On the Edge of the Inland Sea*, takes visitors on a trip through the history of the region from the glaciers to Green Bay's development as a modern city. Other exhibits rotate frequently and range from local art to the history of the cheese industry.

Besides its collections, the Neville offers educational programs, including "Science Saturdays" and "Artifact ID Days," as well as hosting a variety of community events, such as the popular International Film Series, a lecture series with the Green Bay Symphony Orchestra, and poetry night. Finally, "Studio 210: Working Regional Artists" is a recent program that is especially enjoyed by the Museum's visitors, who get the chance to talk with the artists or simply watch them create art. Learn more about the Neville Public Museum of Brown County at www.nevillepublicmuseum.org.



On the Edge of the Inland Sea exhibit



British officer's uniform worn by Charles de Langlade

Neville Public Museum

What to know before you go:

Neville Public Museum of Brown County
210 Museum Place in Green Bay
Tel: (920) 448-4460

Hours:
Mon., Tues., Fri. & Sat. 9AM-5PM
Wed. & Thurs. 9AM-8PM
Sunday noon-5PM

Local History Workshops

For the fifth year, the Society and the Wisconsin Federation of Museums (WFM) are collaborating to offer a spring workshop series for staff and volunteers of museums, local historical societies, and other historical organizations.

WFM, a non-profit, statewide organization dedicated to promoting Wisconsin museums and the museum profession, encourages cooperation among museums in the state. The spring workshop series offers an opportunity to gain new skills and knowledge while networking with colleagues.

Field Services Representatives Rick Bernstein and Janet Dykema work with WFM board members to develop workshop topics that meet the varied needs of organizations throughout the state. This year, legal issues, fundraising, collections care, and archives management are featured topics.

Visit <http://www.wisconsinhistory.org/localhistory> for more detailed information and registration, or contact Field Services Representatives: Rick Bernstein, Southern Region/608-264-6583 or Rick.Bernstein@wisconsinhistory.org or Janet Dykema, Northern Region/715-836-2250 or Janet.Dykema@wisconsinhistory.org

April 2: "Show me the Money: Planning for Your Organization's Financial Future" at the Bergstrom-Mahler Museum, Neenah

April 6: "Care of Natural History Collections" at the Milwaukee Public Museum

April 21: "Overwhelmed by Paper? Strategies for Managing Historical Records" at the University of Wisconsin-Eau Claire

May 21: "Legal Issues Museums Face" at the Wisconsin Veteran's Museum, Madison

National Register of Historic Places: Recent Wisconsin Additions

Union Auto Company Eau Claire, Eau Claire County Date of construction: 1917



The 1917 Union Auto Company Building represents the emergence of a new type of business in the early twentieth century - the automobile dealership—and the design of the building reflects its use. Its basement is a garage. A large freight elevator moved cars to the main floor, which functioned as the showroom. The large display windows showcased new automobiles, often within a seasonal theme or with mannequins dressed for travel. The elevator continues on to the second floor, where repair shops were typically located.

The Union Auto Company building was constructed in the midst of a boom in automobile ownership and production. While just 1492 cars were registered in Wisconsin in 1905, by 1916, the number had jumped to 124,603. At the same time, nationwide auto production rose to 1.5 million in 1916, nearly double the previous year's total. Auto companies like the Union Auto Company helped provide a new consumer commodity at a time of increased supply and affordability.

Black Hawk Powwow Grounds Town of Komensy, Jackson County



The Ho-Chunk gather twice a year at the Black Hawk Powwow Grounds, a ceremonial and social center used since at least the late 1800s and possibly as early as the 1860s. The events take place within the original 40-acre federal allotment granted to Wau-che-raw-wos-kaw (John Big Black Hawk) in 1896. The central feature of the grounds is the powwow arena—a grandstand surrounding a wooden drum arbor and a dance ring.

The Ho-Chunk traditional powwow developed from a number of Nativist religions and traditional revival movements of the late nineteenth century. Early ceremonies may have been "Homecoming Dances," honoring returning Indian Civil War veterans. These were later expanded to more complex dancing, social and ceremonial events.

The Black Hawk Powwow Grounds continue their traditional use today, drawing members to the Powwow not only from across Wisconsin, but also from across the globe. Elders and other members of the Ho-Chunk Nation attended the State Review Board meeting and spoke in support of the nomination.

Oregon Water Tower and Pump House Oregon, Dane County Date of construction: 1899

Following fires that destroyed several commercial buildings in Oregon's downtown, community concern turned to fire protection and water supply. Beginning in 1894 a hand pumping engine distributed water from cisterns. In 1899 the village erected this water tower and its associated pump house. When first constructed, the tower held a wooden tank, but a new steel tank was installed in 1921. The tower and pump house served the village until 1981.



Daniel Lyons Shipwreck Lake Michigan, Kewaunee County Wrecked: 1878



George Goble of Goble and MacFarlane Shipyard of Oswego, New York, constructed the *Daniel Lyons* in 1873. She was the first three-masted schooner built in Oswego and became the model for all

other canal schooners constructed by Goble.

On October 17th, 1878, the *Daniel Lyons* departed Chicago with a cargo of wheat bound for New York State. Just north of Algoma, the *Daniel Lyons* was struck by the *Kate Gillett*, a two-masted schooner heading from Cedar River, Michigan to Chicago. The *Gillett* managed to rescue the entire *Daniel Lyons* crew as well as some of their belongings.

Other properties listed:

Albert and Theresa Marx House—Cashton, Monroe County

Drummond Business Block—Eau Claire, Eau Claire County

Eau Claire Masonic Hall—Eau Claire, Eau Claire County

First National Bank—Oregon, Dane County

John and Flora Gilbert House—Oregon, Dane County

Butternut-Franklin Lakes Archeological District—Town of Hiles, Forest County

Confluence Commercial Historic District—Eau Claire, Eau Claire County

Water Street Historic District—Eau Claire, Eau Claire County

Digital Milestones

“Odd Wisconsin” Enters Fourth Year

No one recalls where the name came from. It might have been a play on the song “On Wisconsin.” Or it may have been a runner-up to the more alliterative “Weird Wisconsin” (which someone else was, unfortunately, already using). But the idea for a blog that would highlight bizarre, unusual, or entertaining tidbits from Wisconsin’s past definitely came from former Society webmaster James Ellis.

Late in 2003 Ellis persuaded colleagues that what was then the new genre of “Web logs” or “blogs” might be a useful way to reach new audiences. He persuaded a staff member — whose anonymity became part of the fun—to experiment, and on Jan. 12, 2004, Odd Wisconsin debuted on the Society’s home page with the motto, “strange but true.” Since then more than 350 stories have appeared at www.wisconsinhistory.org/odd/, the blog has spun off a weekly newspaper column, and in June it will emerge as a book from the WPS Press.

“Waupaca Man Grows Chair from Seed,” “Spurned Inventor Creates Suicide Machine,” “Free Love and Spiritualism in Ripon,” “Horrible Monsters That Devoured Men and Canoes,” and “An Overwhelming Invasion of Maniacs”—these and similar headlines have greeted readers twice a week for the last three years. Although the columns were ostensibly written to “amuse, surprise, perplex, astonish, and otherwise connect you with your past,” in reality, they were designed to bring Web visitors more deeply into the Society’s digital collections and to call attention to some of the Society’s historical treasures. Each Odd Wisconsin entry includes links that open images of manuscripts, pictures, articles, rare books, and other original documents mounted online by the Society. A curious anecdote entices readers to dig deeper and discover more. Every new digital collection that the Society has built has helped to feed the stream of strange stories.

Because one of its explicit goals was to “bring to light curious fragments of forgotten lives,” many Odd Wisconsin entries described the history of people marginalized by mainstream narratives—American Indians, women, ethnic minorities, and working-class people. Ojibwe hunter O-Cha-Own, psychic healer Mary Hayes Chynoweth, two African-American fur traders in 18th-century Marinette, and a host of loggers, farmers, and railroad workers have furnished memorable stories.

So, too, did current events. Odd Wisconsin gave the Society a convenient way to show parallels between our past and the history being made today. News headlines, elections, movies, and sporting events all prompted stories and reflections. Sometimes a controversy

in the news, such as Florida’s 2006 law restricting how history is taught, inspired a column highlighting alternative viewpoints expressed long ago. This, in turn, occasionally sparked objections from readers who thought Odd Wisconsin was taking sides.

But nothing provoked more reader complaints than an apparent error of fact. In January 2006, the column began appearing every Wednesday in the *Wisconsin State Journal*. One installment focused on the history of the Gideons, the organization that places Bibles in hotel rooms (which began in Wisconsin). The article followed the Encyclopedia Britannica and the primary sources in tracing the group’s origins to meetings in Beaver Dam and Janesville. Unfortunately, local boosters in Boscobel had long claimed that it began in their town—a historical marker in their hotel said so—and a hail of contempt and derision descended on Odd Wisconsin. A detailed online explanation and many conciliatory emails were written before the storm blew over.

Today, more than 500 visitors view the blog each day, 90,000 readers see it each week in the newspaper, and uncounted others receive it via RSS feed. Although there will never be a shortage of ghosts, hermits, eccentrics, freaks, legends, and mysteries in Odd Wisconsin, it will also continue to, as its original mission statement said, “lower a bucket into the depths of Wisconsin history” to share the stories of forgotten people and illuminate current events through the lens of the past. Read more odd stories of Wisconsin’s past at www.wisconsinhistory.org/odd/.



Bikini-clad cranberry harvester

WHI 1194



Wisconsin Local History and Biography Articles

Museum Object of the Week Turns Two

The Society’s “Museum Object of the Week” Web feature is now two years old and recently posted its 100th object! Begun as a means to reach an ever increasing online audience, the Museum Object of the Week has featured a wide range of artifacts from the Wisconsin Historical Museum’s permanent collection.



Some objects featured on the Web site have been selected because they coincide with exhibitions held at the Museum in Madison. But perhaps more often, the feature allows the Museum to share objects that are individually significant but may not meet current exhibition needs. In the past these items would have remained carefully preserved in the museum’s storage rooms—out of sight and largely inaccessible to the general public. Museum Object of the Week has allowed curators to select significant objects from the collection with fascinating stories and to couple these artifacts with images and associated items from other Society programs to produce a new “micro” exhibit online each and every week.

The process of deciding which objects are worthy of being featured is a subjective one. Museum staff have tried to select objects of diverse types, time periods and cultural affiliations to highlight the breadth of its object collections. Curators use a number of factors to assess the significance of artifacts, including:

Association (The Object as Relic)

History museums traditionally have collected objects that are affiliated with important people and events. Sometimes such mementos do not tell us much about the individuals and events with which they are associated, but people value them as relics that offer tangible links to well-known historical figures and incidents.

Example: Brett Favre’s Packers jersey

Aesthetic Quality (The Object as Art)

Like art museums, history museums collect visually appealing objects with the discrimination of art critics. Such artifacts demonstrate the skills, tastes, and creativity of their makers and are prized as objects of beauty and products of exemplary craftsmanship.

Example: Lucius Fairchild portrait by John Singer Sargent

Rarity

Like many private collectors, museums value some objects because there are relatively few of their kind. Many people believe that scarcity makes artifacts all the more precious and extraordinary. Although unique objects sometimes do not reveal a great deal about the past, they do carry a certain degree of prestige because few people possess them.

Example: Frank Lloyd Wright cardboard house model

Novelty (The Object as Curio)

Museums sometimes collect objects simply because they arouse people’s curiosity, often because they are strange, unusual, bizarre, humorous, odd or exotic in some way.

Example: Bascom Hill pink flamingo



Typicality (The Object as Specimen)

History museums collect some things because they are commonplace. Ordinary artifacts are valued because their pervasiveness reflects and represents the experiences of many people in a given region, culture, or socioeconomic group.

Example: 1950s pink kitchen

Antiquity

History museums value some objects simply because they are old. In the United States, items dating to the Colonial or Revolutionary periods are considered “antique” and are precious for their link to a distant past. In Wisconsin, objects predating the Civil War carry this distinction.

Example: Lice comb from Fort Crawford

Symbolism (The Object as Icon)

Some objects are significant because they feature visual representations that symbolize the values and world views of the people that made and used them. These objects are imbued with meaning that transcends their obvious functional value. They reflect the collective imagination of the society from which they came and help to create a sense of family, community, or cultural identity.

Example: Big Boy

Evidential Value (The Object as Document)

History museums value some artifacts because they serve as tangible evidence of things that happened or provide explanations about how things were done in the past.

Example: Oldest toast in Wisconsin?

Primacy (The Object as Milestone)

History museums treasure some objects because they were among the first of their kind. Such objects mark important milestones in technological, social, economic or stylistic development. Such items are particularly appealing to those who see history as a chronicle of progress and achievement.

Example: Early Kelvinator home microwave



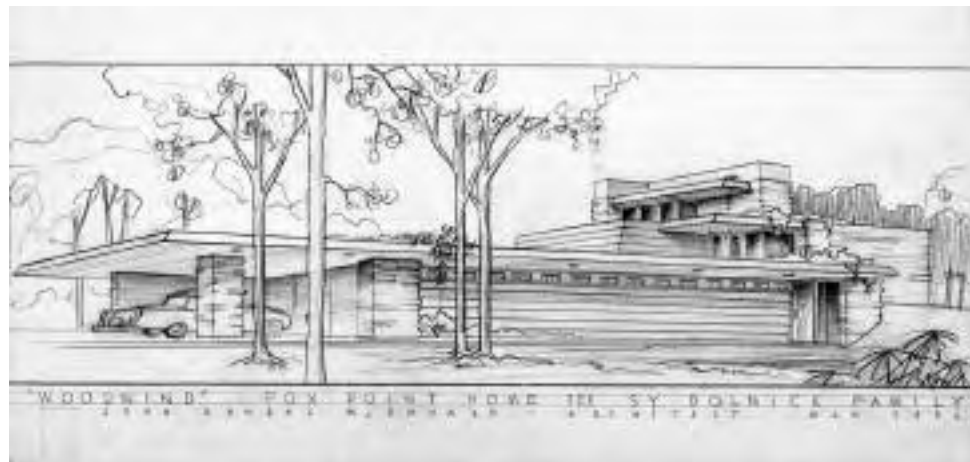
Of course, many objects, including those above, are valued for multiple reasons. Tour the Museum Object of the Week archives at www.wisconsinhistory.org/museum/artifacts and see if you can determine what qualities make the artifacts listed there special. And be sure to catch the new object each week on www.wisconsinhistory.org.

New Records from Wisconsin Architect John Randall McDonald Architectural Records

John Randal McDonald, a Milwaukee-born architect, was considered by many to be the “poor man’s” Frank Lloyd Wright. While struggling to establish an architectural practice in Racine, Wisconsin, McDonald took on a number of modest projects for clients who appreciated Wright’s style but could not afford Wright’s prices. His designs broke with the typical post-World War II ranch house, characterized by asymmetrical one-story shapes dominated by low-pitched roofs, rambling facades, and minimal decoration. McDonald’s designs, on the other hand, utilized jutting, severe rooflines, repeating rectangle patterns, ribbon windows, and horizontal lines. Working with the same architectural grammar as Wright, McDonald’s homes had similar spatial arrangements, but without the costly decorative masonry or woodwork.

Recently, the Society acquired McDonald’s early Wisconsin regional designs, specifically his residential designs from 1949–1958. During this period, McDonald designed about 100 homes for clients mainly in Wisconsin and Illinois, and the collection includes original drawings and reproductions, conceptual

drawings and sketches, photographs, and presentation boards. These designs represent McDonald’s adaptation of the Wrightian style and therefore document Wright’s influence on other architects, architecture, and architectural styles in Wisconsin and the Midwest. McDonald accomplished what Wright said he was doing with his residential designs—designing residences for the middle class. The vast majority of Wright’s residential were far too expensive for clients other than the wealthy. McDonald’s creative use of ordinary materials and his conservative use of masonry and woodwork resulted in designs more accessible to middle-class clients.



Perspective drawing of the Sy Dolnick residence, “Woodwind,” designed by McDonald

Alternative Press Symposium

On April 13th and 14th, the Society will host a free conference that celebrates one of its major collecting areas as well as the man who helped bring these collections to international attention. Entitled “Alternative Print Culture: Social History and Libraries: a Symposium in Honor of James P. Danky,” the conference brings together eleven speakers in the Society auditorium for two days of discussions and presentations on the “alternative” or “oppositional press.” Danky, who will retire after 35 years as a Society librarian in 2007, has built research collections of books, newspapers, periodicals, and ephemera—adding approximately 30,000 new titles—that represent the print culture of the African American press, marginalized ethnic groups, feminist and other women’s publishing, the gay and lesbian press, left- and right-wing political groups, and the literary “underground.”



Jim Danky

The symposium, sponsored by the Center for the History of Print Culture (CHPC), in planned conjunction with the Schools of Library and Information Studies, and Journalism and Mass Communication, and the departments of Afro-American Studies, English and History, the General Library System of the University of Wisconsin, and the Wisconsin Historical Society, will celebrate Danky’s outstanding contributions to librarianship and print culture studies. The Society will also mount an exhibit of Danky’s work, and the CHPC will host a reception at the University Club on the UW-Madison campus to coincide with the symposium. The full conference schedule is available online at the Center for the History of Print Culture’s web site, <http://slisweb.lis.wisc.edu/~printcul/>.

Bob Rashid

National History Day in Wisconsin Hits the Road

Society staff members hit the road last fall, driving 4,200 miles, nearly twice the distance from Los Angeles to New York City, to visit 2,900 students at 22 schools and to introduce them to National History Day. This academic enrichment program, coordinated by the Wisconsin Historical Society, gets students excited about history by giving them the chance to be historians. Students choose a topic related to an annual theme, complete their own historical research and present their conclusions in one of several creative formats, including documentaries, exhibits, performances, papers and Web sites. Participants then have the opportunity to participate in a series of competitive events. This year, students investigated topics related to the theme “Triumph and Tragedy in History.”

For students from Richfield to Eagle River to Lancaster and many places in between, a visit from the Society staff kicked off their NHD experience. Students participated in a hands-on presentation that helped them to learn more about the program and to understand the historical research process. Program volunteers donned the “three hats of the historian”—the detective, the lawyer, and the chef—as they talked about the steps involved in creating their history day project. Students also got a chance to see and participate in sample History Day projects and analyze the qualities of an effective project.

Students and teachers alike remarked about the effectiveness of the presentations in getting participants excited

about NHD and history. One of the teachers felt that it was “nice to have the kids hear about the program from an ‘outside expert.’ They come to see it as something more than ‘another project for social studies class.’”

The classroom presentations are just the first step in the NHD year. Students work with teachers, librarians, and archivist throughout the year as they select topics, find primary sources, analyze information and create their projects. Many of Wisconsin’s 7,000 participants will take their projects out of the classroom and into one of seven regional competitions held this spring, where they will present their projects and compete for the opportunity to attend the state and national competitions later this spring.



Western regional coordinator Greg Werner explains NHD to students

Sarah Clement

2007 NHD in Wisconsin Events

- Southeastern Region—Milwaukee—Saturday, March 3, 2007
- Northern Great Lakes Region—Eagle River—Saturday, March 10, 2007
- Northwestern Region—Eau Claire—Friday, March 16, 2007
- South Central Region—Madison—Saturday, March 24, 2007
- Western Region—La Crosse—Wednesday, March 28, 2007
- Northeastern Region—Green Bay—Saturday, March 31, 2007
- Central Region—Stevens Point—Sunday, April 15, 2007



Wisconsin History Day State Event—Madison—Saturday, April 28, 2007

For more information about the program or if you are interested in attending or volunteering at a state or regional event, contact the state coordinator, Sarah Clement, at historyday@wisconsinhistory.org or (608) 264-6487.

Wired!

Visiting the Society’s Library-Archives? Bring your laptop, connect to the world. In late December, the University of Wisconsin-Madison installed wireless antennae in the Archives Research Room, the Library Reading Room and the Library Microfilm Room. Anyone with a laptop can now connect easily and reliably to the Internet through the campus wireless network.

Students, genealogists, local historians, and anyone else can access personal files, find research materials, read email, and readily integrate Web information into their own work, all from their own computers while working at the Society. All it takes is a guest login that can be supplied by any public services librarian or archivist.

The Society thanks the University of Wisconsin for making this possible. Easy access to the campus network will make the Library-Archives a better, more productive place for students, genealogists and other researchers to accomplish their work.

A New Look at an Old Medium

Communication is fundamental to our lives and has been for more than a millennium. This seems particularly true today as we email, text message, blog, and call people from all corners of the world. While these technologies have fundamentally changed the manner in which we exchange information, the necessity of the exchange remains the same: it is critical for day-to-day life and for perpetuating our way of life.

Wisconsin's Indians have used all these modern techniques as well as traditional media. More than three thousand years ago, they began drawing and carving messages on rock outcrops in Wisconsin to communicate with each other. Wisconsin currently has 152 recorded rock art sites,



Rock outcropping

most in southwest Wisconsin, an area with many exposed bedrock outcroppings. Because we have developed new forms of communication, understanding these delicate messages is often a challenge for archaeologists today. Recently, staff from the State Archaeology and Maritime Preservation Program got a call from a family in Richland County. They described what appeared to be an Indian rock art site, which was confirmed by a site visit. Usually, one of the first steps archaeologists take to insure the long-term preservation of this type of rock art is to record all of the images that are present. This is a time-consuming

process involving the construction of a grid on top of the rock art panel so that Society staff could make a scaled drawing of all of the symbols and their relationship to each other. Each symbol was also verbally described and then photographed with both black-and-white and color film to produce a detailed record of the site.

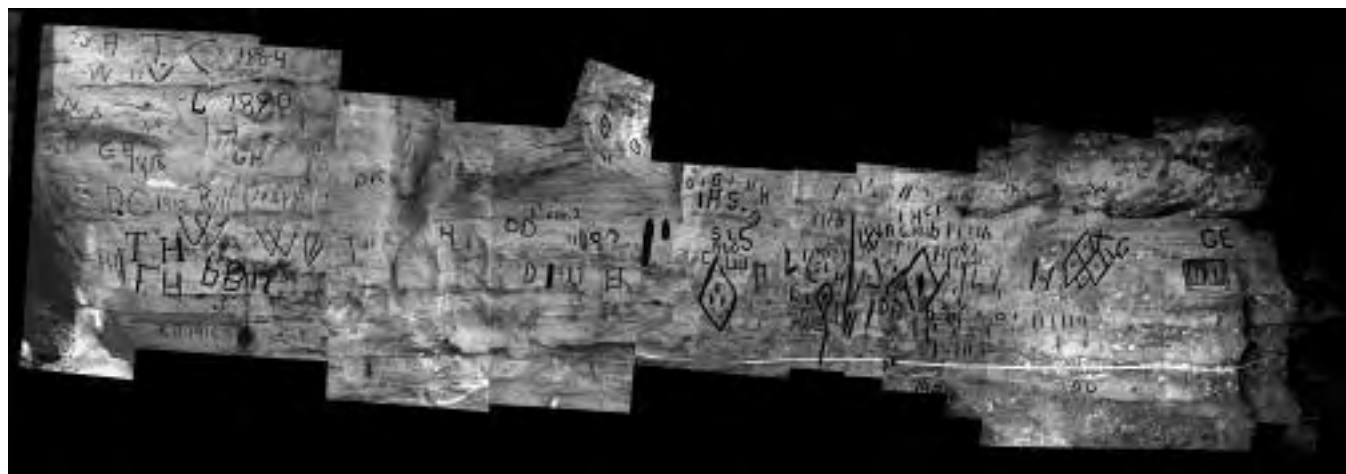
With this site, though, Society archaeologists decided to do something different. Using techniques developed by the Society's Maritime staff, Keith Mevenden and Tami Thomsen, it was decided to make a photomosaic of the panel just as has been done for Great Lakes shipwrecks. This eliminated the need to set up a grid to make a detailed drawing, a real challenge in this case because the drawings were carved into a convex out-cropping of rocks. A rough sketch of the panel was made and close-up, scale photographs were taken of each glyph. Archaeologist Amy Rosebrough used a computer program to mesh all of the images together. The result is shown in the accompanying image.

This new method of recording and preserving Indian rock art worked so well that archaeologists plan to use it in the future. These fragile sites are slowly eroding away and careful documentation is the only way to preserve these past communications for future generations.

Join Society archaeologists on May 19, 2007 at 1:30 PM for a tour of the rock art panel at Roche-A-Cri state park, near Adams-Friendship.



Archaeologist John Broihahn measures the drawings and carvings



Out & About Wisconsin

The trips listed below date from early November through mid January and represent a sampling of Society staff outreach efforts to help people connect to their past.

LA CROSSE • November 3 • Digital Collections and Web Services Head Michael Edmonds trained 58 teachers from western Wisconsin on using digital collections in the classroom at UW-La Crosse.

SULLIVAN • November 4 • Visual Materials Curator Andy Kraushaar spoke to attendees of the Concord Historical Society's annual meeting about the care and identification of photographs.

MADISON • November 6 • Museum Educator Beth Lemke presented programs on "Lifeways of the Woodland Indians" and "Timber" to 22 members of the Westminster Apartments.

LAKE MILLS • November 8 • Historian Joe DeRose spoke to 20 members of the landmark commission and Main Street program about the Certified Local Government Program.

MADISON • November 9 • Curator of Costume and Textiles Leslie Bellais advised the archival staff at the University of Wisconsin's School of Nursing on how to organize, number, catalog, and store their collection of nursing uniforms.

EAGLE RIVER • November 10 • National History Day Coordinator Sarah Clement introduced 100 students at Northland Pines Middle School to the National History Day program.

MADISON • November 10 • Curator of Costume and Textiles Leslie Bellais presented "Hoops and Bustles: A Look at Victorian Fashion" to members of the John Bell chapter of the Daughters of the American Revolution at the Edgewater Hotel.

MILWAUKEE • November 11 • Director of Development David O'Dell was the keynote speaker at the Wisconsin Society of Mayflower Descendants' annual "Compact Luncheon."

SPARTA • November 13 • Curator of Costume and Textiles Leslie Bellais worked with the curator of the Monroe County Local History Room and Museum to identify and date the museum's clothing collection.

MADISON • November 28 • Museum Tour Services Coordinator Paul Rogovich gave three presentations on "Peoples of the Woodlands" to 130 2nd graders at Shorewood Hills Elementary School.

ALTOONA • November 29 • National History Day Coordinator Sarah Clement introduced 20 students at Altoona Middle School to the National History Day program.

MONONA • November 29 • Museum archaeologist Denise Wiggins provided an introduction to archaeology and a hands-on activity on Indian lifeways in Wisconsin to 65 students at Nichols School.

RIPON • December 6 • Marty Perkins, curator of research at Old World Wisconsin, spoke to a Museum Studies class at Ripon College on internships and careers in museums.

MARSHFIELD • December 13 • National History Day Coordinator Sarah Clement introduced 300 students at Marshfield High School to the National History Day program.

MOUNT HOREB • January 2 • Museum Educator Beth Lemke spoke to 10 senior citizens at the Mount Horeb Senior Center.

MIDDLETON • January 1 • Museum Tour Services Coordinator Paul Rogovich spoke to 10 senior citizens at the Pheasant Branch Senior Apartments.

BLACK EARTH • January 10 • Field Services Rep. Rick Bernstein gave a presentation on local history at the Black Earth Historical Society's annual meeting.

BLUE MOUNDS • January 16 • Field Services Rep. Rick Bernstein met with members of the Blue Mounds Area Historical Society about their plans to restore the historic marker at Fort Blue Mounds and to discuss their plans to host the regional convention in August.

Development

Society Honor Roll

The Wisconsin Historical Society wishes to thank the following supporters who made gifts to the Wisconsin Historical Foundation totaling \$250 or more between November 10, 2006 and January 12, 2007. A complete acknowledgement of all fiscal year 2007 gifts will be forthcoming in our online annual report.

www.wisconsinhistory.org/about/annualreport

John Muir Partners (\$25,000+): Mr. and Mrs. Hartley B. Barker; Eleanor L. Blakely; Mr. and Mrs. Craig C. Culver; John J. Frautschi Family Foundation, Inc.; Mark and Janet Gajewski; Mrs. Peter D. Humleker, Jr.; Ruth DeYoung Kohler; Mead Witter Foundation, Inc.; Gordon V. Smith

Black Hawk Patrons (\$10,000-\$24,999): Helen Bader Foundation; Evjue Foundation, Inc.; Mr. and Mrs. W. Jerome Frautschi; Jerrold M. Jung; Madison Community Foundation; Rowland and Audrey McClellan; Pleasant T. Rowland Foundation
Belle Case La Follette Associates (\$5,000-\$9,999): Grant C. Beutner; The Caxambas Foundation; George A. Fait; Walter A. and Dorothy Jones Frautschi Charitable Unitrust; Gilbane; Dick and Donna Holscher; Kohler Foundation, Inc.; Ann L. Koski; Chester L. Krause; LaFollette Godfrey & Kahn; George L.N. Meyer Family Foundation, Inc.; Mary Alice Negus; Jean S. Rennebohm

Frederick Jackson Turner Society (\$2,500-\$4,999): Anonymous (2); Nancy M. Bauer; International Harvester Collectors Wisconsin Chapter #4 Inc.; Kikkoman Foods Foundation, Inc.; Agnes M. Lee; Webcrafters-Frautschi Foundation, Inc.

The Director's Circle (\$1,000-\$2,499): Anonymous; Diane and Kenneth Ballweg; Judge Thomas H. Barland; Mr. and Mrs. Todd I. Berens; Mr. and Mrs. Oscar C. Boldt; Arlene H. Brachman; Mr. and Mrs. Peter C. Carstensen; Jean Cronon; Mr. and Mrs. George A. Dionisopoulos; Janet K. Geronime; Dr. and Mrs. Ronald L. Giese;

Alicia and Jerry Goehring; Dr. and Mrs. Charles E. Haas; Robert S. Hage Jr.; Beverly and Robert Harrington; Mr. and Mrs. James M. Horsfall; Dr. and Mrs. John M. Irvin; Rasmus B. Kalnes; Timothy and Barbara Leeds; Patricia Lew and Monty Schmidt; Mr. and Mrs. Oscar G. Mayer; Minnesota Community Foundation; The Parker Foundation; Mr. and Mrs. Richard L. Pifer; Walter and Amelia Rugland; Mr. and Mrs. Donald K. Schott; Mr. and Mrs. Philip T. Sillman; Mr. and Mrs. David R. Stucki; Mr. and Mrs. R. Nicholas Trane II; Gerald D. Viste; Mr. and Mrs. William J. Webster

Lyman Copeland Draper Supporters (\$500-\$999): Mr. and Mrs. Gerald J. Achtor; Pamela Anderson; AT&T Foundation Matching Gifts Program; Bank of Prairie du Sac; Boelter & Lincoln; Barrett Corneille, Esq.; Mr. and Mrs. Richard A. Erney; Sharon L. and James E. Gutenberger; Mr. and Mrs. F. Curtis Hastings; John O. Holzhueter; Joan B. Key; John R. and Beverly J. Larson Foundation; Russell F. Lewis; Terry Marshall and Lesley Johnson; Mr. and Mrs. Paul H. McFee; John and Lyn Otterstein; Allan and Patricia Patek; Deb Pionkowski; Joseph Ranney and Rebecca Rice; David Y. and Peggy A. Rosenzweig; Sam's Club #8255-Madison; Lynde B. Uihlein; Mr. and Mrs. Frank A. Weinhold; Paul Wertsch and Kay Heggstad

Reuben Gold Thwaites Benefactors (\$250-\$499): Debra Anderson; Anonymous; Dennis A. Antonie; M. Jane Ayer; Carol Lohry Cartwright; Mr. and Mrs. Jerry Corton; William Cronon and Nan Fey; Ruth C. Emmel; Nancy J. Emmert; Jeanne L. Engle; Patrick P. Fee; Paul and Katherine Fernholz; Bill and Mardi Glenn; Dennis and Karen Goodenough; Jean A. Gregg; William A. Hachten; Eugene and Laura Halker; Collier M. Hands; Mr. and Mrs. Wesley J. Hellen; Earl and Eugenie Hildebrandt; Mr. and Mrs. Ralph E. Houseman; Mr. and Mrs. Merrill Hyde; Susie Jablonic; June E. Johnson; Shirley E. Johnson; M.J. Jones; Patricia Karnes; Patricia Maenner; Mr. and Mrs. Francis W. Matusinec; Richard W. McCoy; Elaine M. McKee; Bruce Meier and Wendy Fearnside; Sharon Mulak and Lloyd Velicer; David and Amelia O'Dell; Ogden Publications, Inc.; Mr. and Mrs. Gordon E. Parks; Ellen J. Purcell; Bill and Jeanne Rayne; Jane C. Reynolds; Rockwell International Corporation Trust; Mr. and Mrs. Douglas Salmon; Dr. and Mrs. Richard H. Sewell; Sisters of the Holy Nativity; Dr. and Mrs. Gilbert H. Stannard; Lori R. Stutte; Mr. and Mrs. Robert B. Thomasgard, Jr.; Thrivent Financial for Lutherans; Josephine C. Umana; Voith Fabrics; Mr. and Mrs. John E. Wall; Wal-Mart Store #1267-Sun Prairie; Wal-Mart Store #2335-Madison; Dr. and Mrs. Maurice E. White; Barbara M. and Edwin P. Wiley; Wisconsin Archeological Society

Information

Society Headquarters Building



Library Mall, UW-Madison
816 State Street
Madison, WI 53706-1482
(608) 264-6400
Parking: Lake Street ramp
www.wisconsinhistory.org

Library

Access to the library stacks and microforms reading room ends one half hour before closing times.

January 22-March 30, April 9-May 19

8 A.M. to 9 P.M., Monday-Thursday
8 A.M. to 5 P.M., Friday and Saturday

April 2-7

8 A.M. to 5 P.M.

Information: (608) 264-6534

Reference: (608) 264-6535

FAX: (608) 264-6520

www.wisconsinhistory.org/libraryarchives

Archives Research Room

The Archives Research Room provides access to manuscripts, government records, rare books, recorded sound, maps, photographs and entertainment industry related holdings of the Wisconsin Center for Film and Theater Research.

8 A.M. to 5 P.M., Monday-Friday
9 A.M. to 4 P.M., Saturday

(Collection retrieval is limited to: 9 A.M. to noon and 1 to 4 P.M., Monday-Friday; and 9 to 11:30 A.M., 12:15 to 12:30, and 1:15 to 3:45 P.M., Saturday.)

Information: (608) 264-6460

FAX: (608) 264-6472

www.wisconsinhistory.org/libraryarchives/readroom

Wisconsin Historical Museum



Capitol Square
30 North Carroll Street
Madison, WI 53703-2707
(608) 264-6555/FAX (608) 264-6575
Parking: Capitol Centre or Dayton Street ramps
www.wisconsinhistory.org/museum

9 A.M. to 4 P.M.,
Tuesday-Saturday
Closed Sunday, Monday, and major holidays

Admission by donation. Suggested amounts: \$4 for adults, \$3 for children under 18, and \$10 for families. Society members receive free admission.

Persons attending Museum programs are asked to make a suggested \$2/person donation.

To schedule a group visit, telephone (608) 264-6557 between 11 A.M. and 4 P.M.

Museum Store

(608) 264-6428

Toll-free (for orders only): (888) 999-1669

Online Store

www.wisconsinhistory.org/shop

Society Statewide

Archives Services

Area Research Center Network

For information about Area Research Centers around the state, see www.wisconsinhistory.org/libraryarchives/arcnet or telephone (608) 264-6460.



Northern Great Lakes History Center and Archives

29270 County Highway G/Ashland, WI 54806-9339
(715) 685-2647

www.wisconsinhistory.org/libraryarchives/arcnet/northlan.asp

Historic Sites



First Capitol

Thru September 3, 2007
County Highway G/Belmont, WI 53510
(608) 987-2122

www.wisconsinhistory.org/firstcapitol



H. H. Bennett Historic Site

Open year round; hours vary
215 Broadway/Wisconsin Dells, WI 53965
(608) 253-3523

www.wisconsinhistory.org/hhbennett



Madeline Island Museum

Thru October 6, 2007
La Pointe, WI 54850
(715) 747-2415

www.wisconsinhistory.org/madelineisland



Old World Wisconsin

Thru October 31, 2007, and special winter dates
S103 W37890 Highway 67/Eagle, WI 53119
(262) 594-6300

www.wisconsinhistory.org/oww



Pendarvis

Thru October 31, 2007
114 Shake Rag Street/Mineral Point, WI 53565
(608) 987-2122

www.wisconsinhistory.org/pendarvis



Stonefield

Thru Sept. 3, 2007 then weekends only to Oct. 14
P.O. Box 125/Cassville, WI 53806
(608) 725-5210

www.wisconsinhistory.org/stonefield



Villa Louis

Thru October 31, 2007, and special winter dates
521 N. Villa Louis Rd./Prairie du Chien, WI 53821
(608) 326-2721

www.wisconsinhistory.org/villalouis



Wade House and Wesley Jung Carriage Museum

Thru October 14, 2007
P.O. Box 34/Greenbush, WI 53026
(920) 526-3271

www.wisconsinhistory.org/wadehouse



Circus World Museum

Open year round; hours vary
550 Water Street/Baraboo, WI 53913-2597
(608) 356-8341

www.circusworldmuseum.com

PLEASE NOTE: The schedules provided here were updated before press time but are subject to change without notice. Please call to confirm operating hours before making final plans.

Wisconsin Historical Society Fund-Raising Report

The Wisconsin Historical Foundation is pleased to report the following results for the period between July 1, 2006 and June 30, 2007:

Annual Fund.....\$527,681
(up 52% from last year)

Annual Fund Donors2,492

The National Endowment for the Humanities (NEH) awarded the Wisconsin Historical Foundation a \$500,000 challenge grant in May 2004 for the Library-Archives Preservation Endowment. The Foundation must match the NEH grant on a four-to-one basis and, to date, including the NEH grant, has raised \$1,916,571 toward the long-range goal of \$2.5 million.

IRA Rollover Provides New Option for Society Supporters

Last fall the Wisconsin Historical Foundation told you about new legislation, the Pension Protection Act, which incorporated a package of charitable giving incentives including an IRA rollover provision. If you are 70½ or older, you can still take a distribution from your IRA (up to \$100,000) and transfer it directly to a qualifying charity (such as the Wisconsin Historical Foundation) without having to count the distribution as taxable income.


Gifts transferred from IRAs may be given in addition to any other charitable giving that has already been planned. You do not have to give up annual giving to take advantage of this opportunity.

For more information on this giving option, which continues through December 31 of this year, contact Jeanne Engle, Director of Development, at (608) 264-6580 or jeanne.engle@wisconsinhistory.org.

For information about making a gift to the Society or benefiting the Society through your estate, please contact Melinda Heinritz, Executive Director of the Wisconsin Historical Foundation, at (608) 264-6585 or mvheinritz@whs.wisc.edu.

Calendar of Events

Society Events Statewide

 For further information about special events or to confirm dates and times (recommended), call the venue (phone numbers are on page 15) or visit www.wisconsinhistory.org.

3 March 9AM–12PM, Memorial Library, Madison—“Oh Darned! Where did I put Uncle George? Organizing and Compiling your Research” will focus on systems designed to simplify your work as a genealogist. Registration required

3 March 11AM–3PM, Wade House—A “Hearthside Dinner” will bring the sounds and smells of the 19th century to life as guests prepare, cook and enjoy a meal using the Wade House kitchen and dining room. Tickets required.

6 March 12:15PM–1PM, WHS Museum—“Manners, Mending and Morals—Ladies’ Lot in Life from 1850–1950” explores the everyday lives and expectations of women, presented by well-behaved 19th century spinster Hattie Fairchild.

20 March 12:15PM–1PM, WHS Museum—Begin your vacation planning around Wisconsin with newspaper columnist Mary Bergin, author of *Sidetracked in Wisconsin: A Guide for Thoughtful Travelers*.

22 March 12PM–1PM, Milwaukee County Historical Museum—Celebrate women’s history month with a lunchtime lecture and signing by Genevieve McBride, author of *Women’s Wisconsin*. 910 N Old World 3rd St, Milwaukee. (414) 273-8288

24 March 1PM–3PM, WHS Museum—Lory Aitken will discuss how the role-playing gaming genre got its start in Wisconsin with *Dungeons & Dragons*.

8 April 10AM–2PM, Old World—Enjoy a lavish Easter brunch, play children’s games, and take part in a traditional Easter Egg hunt complete with prizes. Reservations required.

14 April 11AM–3PM, Wade House—A “Hearthside Dinner” will bring the sounds and smells of the 19th century to life as guests prepare, cook and enjoy a meal using the Wade House kitchen and dining room. Tickets required.

14 April 9AM–12PM, WHS Headquarters—“Digital Retouching Demystified” will teach you how to preserve, repair, and enhance your old family photographs using a variety of digital techniques. Registration required.

15 April 1:30PM, WHS Headquarters—“Washington Square,” the first movie in the 2007–2008 season of the Classic Book & Movie Club.

15 April 2PM, WHS Museum—“Flimsies to Furbelows: Women’s Dress in the Antebellum Era” and “A Funny Thing Happened on the way to Harper’s Ferry,” presented by the FRIENDS.

17 April 4:30PM–7PM, WHS Museum—“Toying with their Future,” a film and discussion about the marketing of gender-specific toys and the messages they send to children.

Mark Your Calendars!

May is Wisconsin Historic Preservation and Archaeology Month, a celebration of local historic and archaeological landmarks. Find events in your area or submit your own community’s preservation month activity online at www.wisconsinhistory.org/hp/hpmonth. And watch for more details in the next issue of *Columns*.

Wisconsin Historical Museum Exhibitions

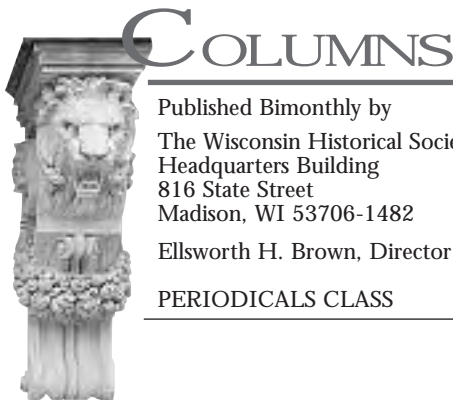
PERMANENT

People of the Woodlands: Wisconsin Indian Ways, second floor, stories of native peoples living in Wisconsin through the Fur Trade; introduces the science and art of archaeology.

On Common Ground: Two Hundred Years of Wisconsin History, third and fourth floors, exploration of themes unique to Wisconsin history from settlement days to the present.

TEMPORARY

“Toy Stories”, 17 October through 26 May 2007. This historical look at popular toys and games from the 1940s to the present includes classics plus toys with intriguing Wisconsin connections. The exhibition shows that toys not only reflect important trends in economic, social, and cultural history, but they also contribute to and reflect the personal histories of those who play with them.



COLUMNS

Published Bimonthly by
The Wisconsin Historical Society
Headquarters Building
816 State Street
Madison, WI 53706-1482

Ellsworth H. Brown, Director

PERIODICALS CLASS