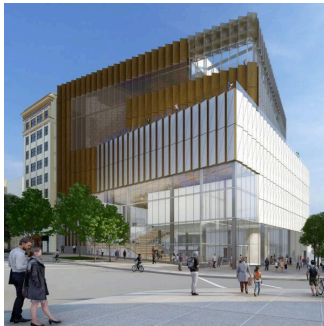


WISCONSIN HISTORICAL SOCIETY

# CAPITOL CONNECTIONS



## SAVE THE DATE: GROUNDBREAKING EVENT

We are breaking ground on the new, state-of-the-art Wisconsin History Center on Wednesday, April 23, and you're invited!

The Wisconsin History Center will provide unprecedented access to our state's world-class historical collections and connect the Wisconsin Historical Society's vast resources to residents across all 72 counties.

This transformative project would not be possible without years of incredible bi-partisan support from our State Legislature, and we look forward to celebrating this milestone alongside you!

**WHERE:** 30 N. Carroll Street, Madison, WI

**WHEN:** Wednesday, April 23, 2025, 12-1 p.m.

**Formal invitation to follow.** Explore the Wisconsin History Center [here](#).

## MORE UPCOMING EVENTS

**NOW THROUGH JUNE:** Catch the **new State Capitol exhibit** highlighting ice fishing in Wisconsin! The display is located on the east wing of the third floor.

**March 1:** [The Cadottes: A Fur Trade Family on Lake Superior \(Dodge County\)](#).

**March 3-31:** [Wisconsin's John Muir: An Exhibit Celebrating the National Park Service Centennial \(Crawford County\)](#).

**March 4:** [Genealogy Webinar: Researching Rural Ancestors \(Online\)](#).

**March 13:** [Felipe Avila discusses Archaeology and Technology \(Taylor County\)](#).

**March 17-May 30:** [Traveling History Walk: We Like to Dive Right In \(Crawford County\)](#).

**March 18:** [History Sandwiched In: The Wade Family, One Frontier at a Time \(Dane County\)](#).

**March 20:** [On the Hunt: The History of Deer Hunting in Wisconsin \(Crawford County\)](#).

**March 27:** [Researching Your Genealogy with the Historical Society \(Dane County\)](#).

**March 29:** [Bottoms Up: Toast to Historic Wisconsin Bars & Breweries \(Richland County\)](#).

**March 31-April 11:** [Traveling History Walk: We Stand Up for What We Believe In \(La Crosse County\)](#).

**[Click here](#)** for a complete list of upcoming events.



*Special thanks to all legislators and their staff who joined us for an orientation event last month. Participants toured the State Archive Preservation Facility in Madison, heard from Society leaders and learned more about how we serve all 72 Wisconsin counties.*

*Access the event photo gallery [here](#).*

---

**IN THE NEWS**

- **Smithsonian Magazine:** [Archaeologists Are Finding Dugout Canoes in the American Midwest as Old as the Great Pyramids of Egypt](#)
- **TODAY:** [Top travel destinations for 2025: Alaska, Portugal, Wisconsin, more](#)
- **News 3 Now:** [Highlighting Madison's rich Black history and beyond](#)
- **WUWM:** [New Wisconsin historical markers elevate underrepresented communities](#)
- **Wisconsin Public Radio:** [A new children's book celebrates legacy of late Wisconsin civil rights leader Vel Phillips](#)
- **Spectrum 1:** [Historical Society highlights state's iconic pop culture moments with new exhibit](#)

## RECENT LISTINGS

### Recent Additions to the State Register of Historic Places:

- [Roscius and Ingebor Freeman House \(Pierce County\)](#)
- [Jay and Bernice Grimm House \(Pierce County\)](#)
- [Little Harbor Launch Wreck \(Door County\)](#)
- [Frederick and Maria Pabst House \(Milwaukee County\)](#)
- [Roosevelt Elementary School \(Rock County\)](#)
- [Washington Elementary School \(Rock County\)](#)

### Recent Additions to the National Register of Historic Places:

- [St. Peter Shipwreck \(Ozaukee County\)](#)
- [Clintonville Federal Savings and Loan Association Building \(Waupaca County\)](#)
- [100 East Building \(Milwaukee County\)](#)
- [Grimm House \(Pierce County\)](#)
- [Eagle River Historic District \(Vilas County\)](#)



The Wisconsin Historical Society offers a variety of summer camps for kids looking for the ultimate history-inspired adventure! From unraveling cool Badger State myths to exploring hidden secrets from the Old World and crafting artisan keepsakes, we have something for a variety of interests and age groups. Camps are offered at the History Maker Space in Madison and Old World Wisconsin in Waukesha County.

[LEARN MORE](#)

## DID YOU KNOW?

We recently made changes to the Society's Capitol Artwork Loan Program concerning new artwork reproductions. [Click here](#) to review the updated policy.



WISCONSIN  
HISTORICAL  
SOCIETY

[wisconsinhistory.org](http://wisconsinhistory.org)

Sent to: [kendall.poltzer@wisconsinhistory.org](mailto:kendall.poltzer@wisconsinhistory.org)

[Unsubscribe](#)

Wisconsin Historical Society, 816 State Street, Madison, WI 53706, United States