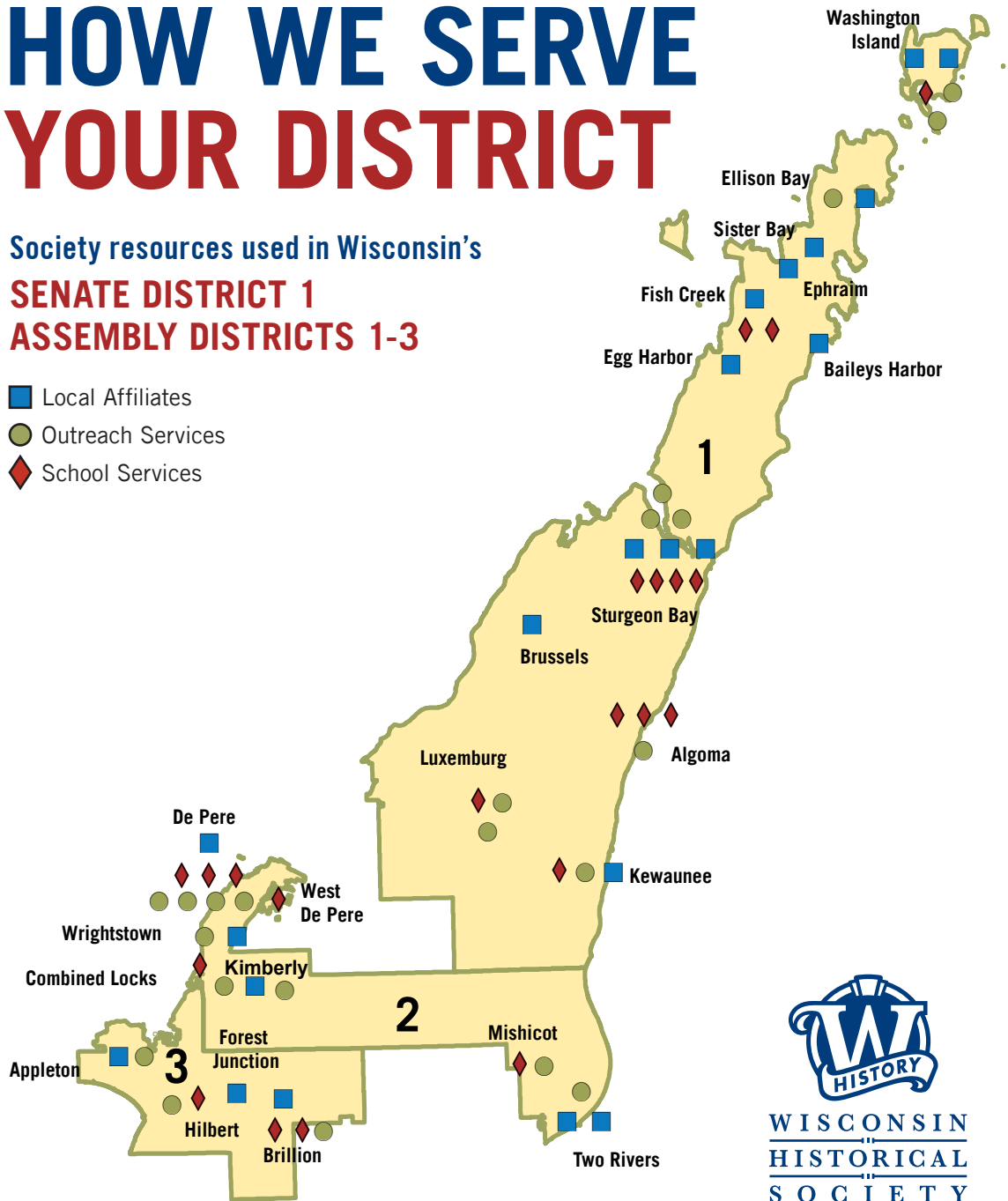


HOW WE SERVE YOUR DISTRICT

Society resources used in Wisconsin's
SENATE DISTRICT 1
ASSEMBLY DISTRICTS 1-3

- Local Affiliates
- Outreach Services
- ◆ School Services



OUTREACH SERVICES

21

Local History
Affiliates served

OUTREACH SERVICES

168,307

Sessions engaging the services through the
Wisconsin Historical Society's website.

SCHOOL SERVICES

20

School districts used the Society's
4th-grade Wisconsin history textbook
and visited a museum.

SCHOOL SERVICES

1,747

Students used the Society's 4th-grade
Wisconsin history textbook, visited a museum,
or participated in National History Day.

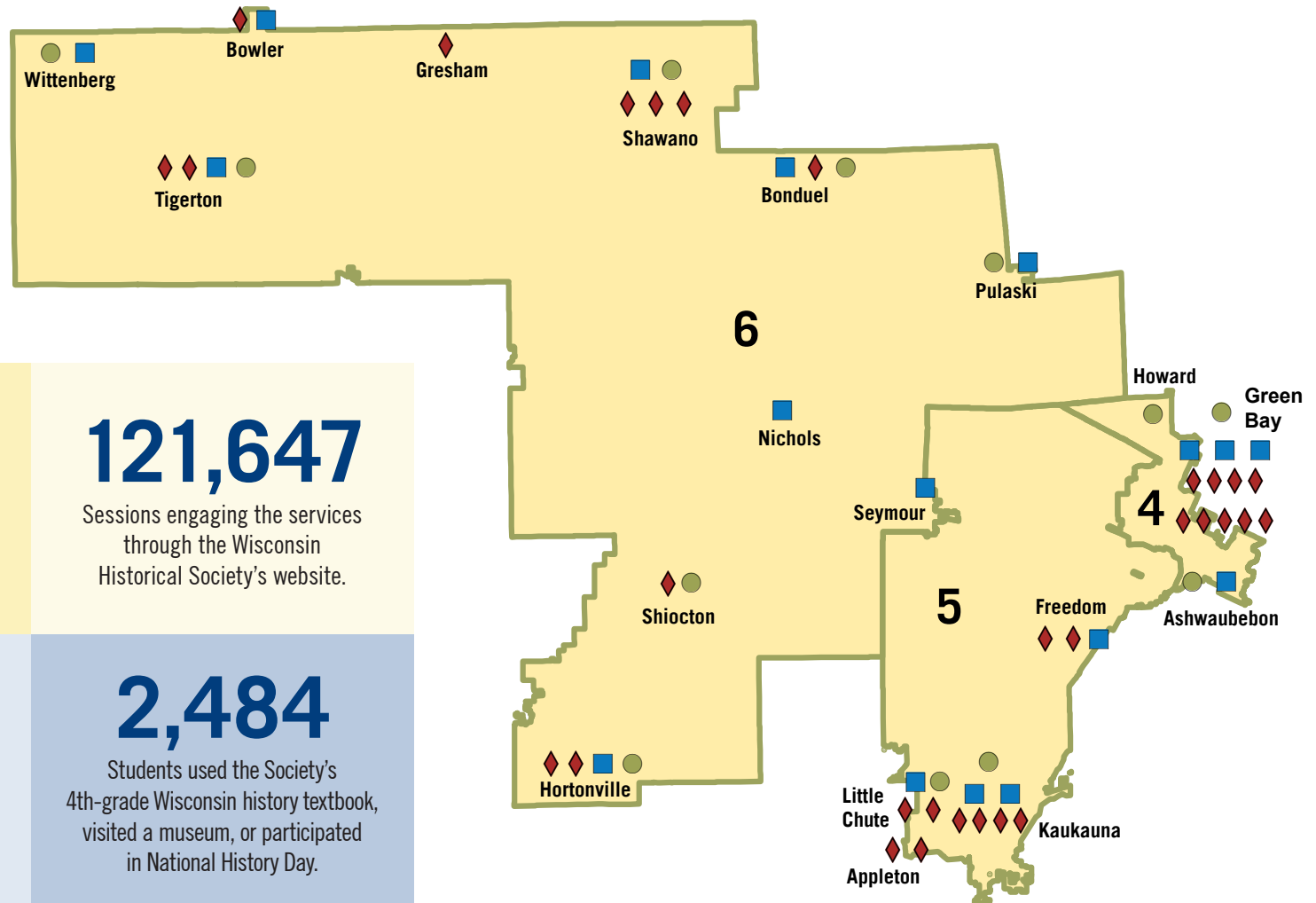
Due to the re-opening of sites and programming after COVID-19, operations at the Society and outreach across the state are slowly continuing to return to normal service.

SOURCES: WISCONSIN HISTORICAL SOCIETY, LEGISLATIVE TECHNOLOGY SERVICES BUREAU (LTSB), GOOGLE ANALYTICS

HOW WE SERVE YOUR DISTRICT

Society resources used in Wisconsin's
SENATE DISTRICT 2
ASSEMBLY DISTRICTS 4-6

- Local Affiliates
- Outreach Services
- ◆ Schools Visiting Museums or Historic Sites



OUTREACH SERVICES	<h2>18</h2> <p>Local History Affiliates served</p>	<h2>121,647</h2> <p>Sessions engaging the services through the Wisconsin Historical Society's website.</p>
SCHOOL SERVICES	<h2>27</h2> <p>School districts used the Society's 4th-grade Wisconsin history textbook, participated in National History Day and visited a museum.</p>	<h2>2,484</h2> <p>Students used the Society's 4th-grade Wisconsin history textbook, visited a museum, or participated in National History Day.</p>

Due to the re-opening of sites and programming after COVID-19, operations at the Society and outreach across the state are slowly continuing to return to normal service.

SOURCES: WISCONSIN HISTORICAL SOCIETY, LEGISLATIVE TECHNOLOGY SERVICES BUREAU (LTSB), GOOGLE ANALYTICS

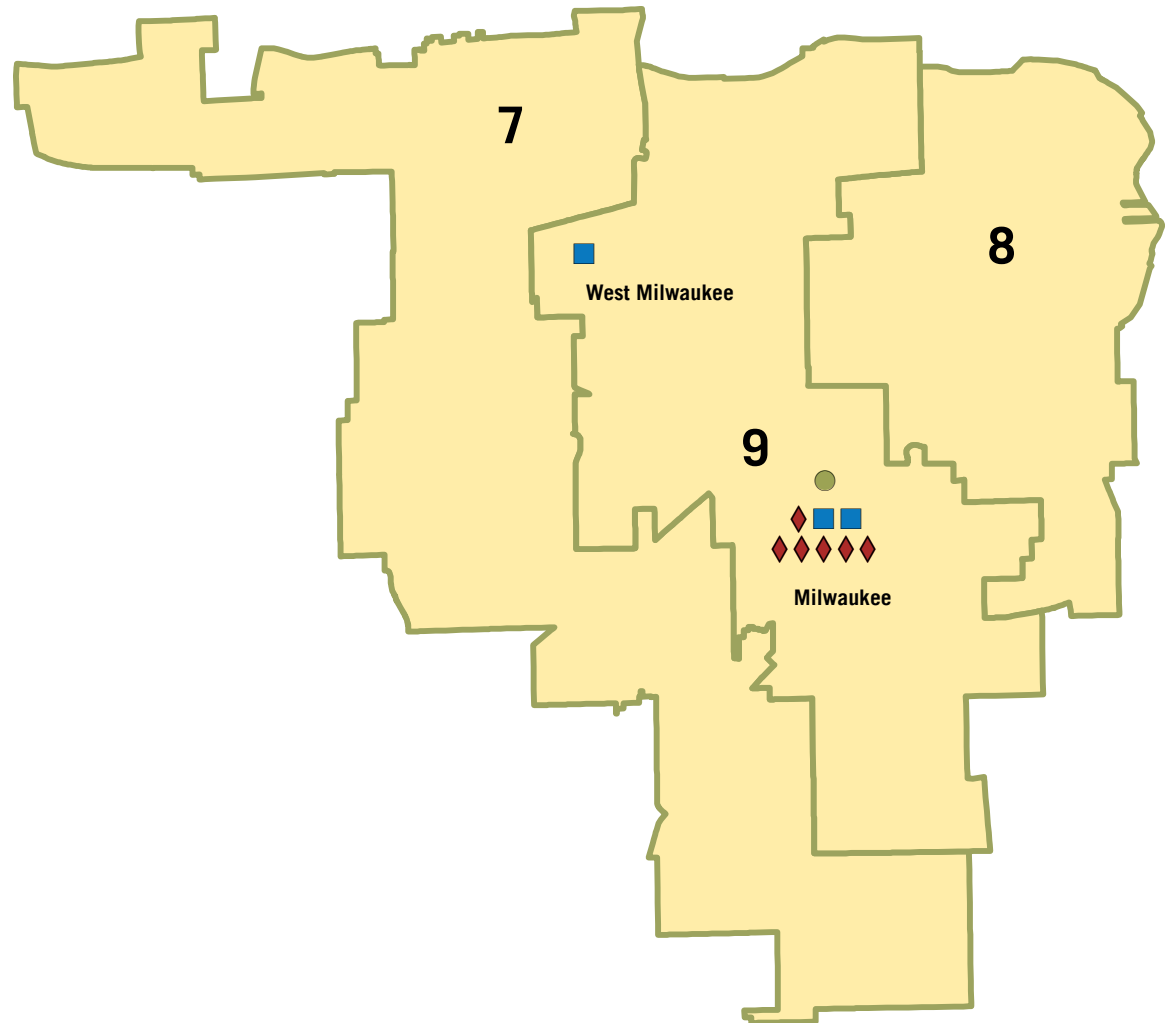
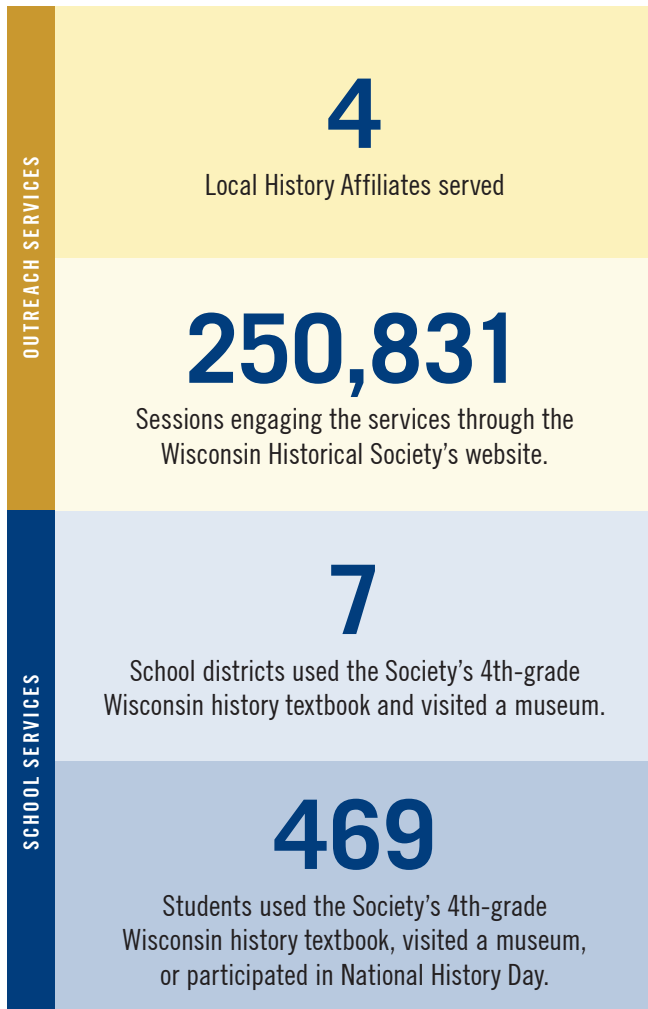
HOW WE SERVE YOUR DISTRICT



WISCONSIN
HISTORICAL
SOCIETY

Society resources used in Wisconsin's
SENATE DISTRICT 3
ASSEMBLY DISTRICTS 7-9

- Local Affiliates
- Outreach Services
- ◆ Schools Visiting Museums or Historic Sites



Due to the re-opening of sites and programming after COVID-19, operations at the Society and outreach across the state are slowly continuing to return to normal service.

SOURCES: WISCONSIN HISTORICAL SOCIETY, LEGISLATIVE TECHNOLOGY SERVICES BUREAU (LTSB), GOOGLE ANALYTICS

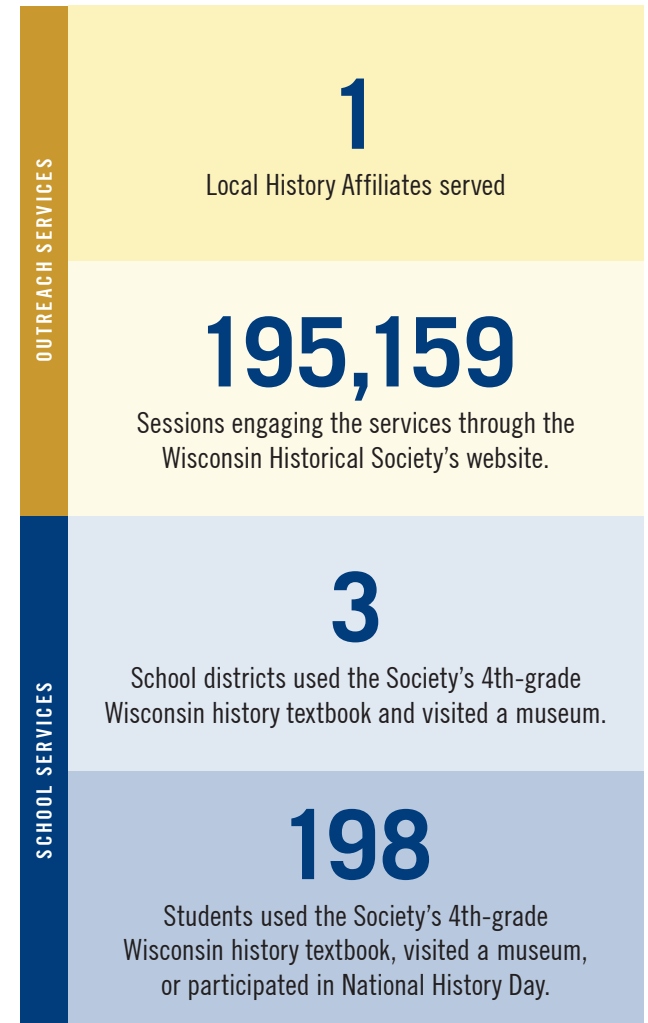
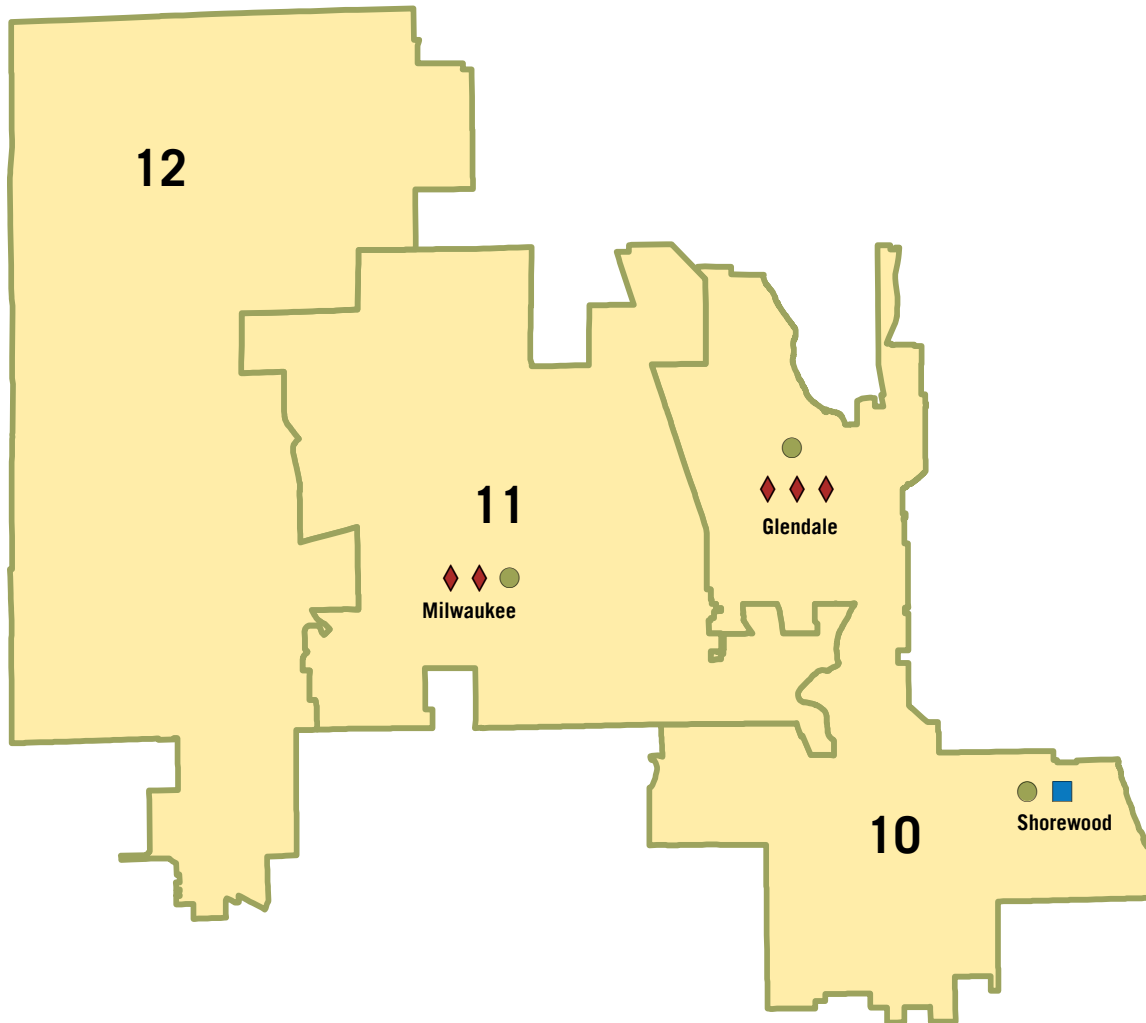
HOW WE SERVE YOUR DISTRICT



WISCONSIN
HISTORICAL
SOCIETY

Society resources used in Wisconsin's
SENATE DISTRICT 4
ASSEMBLY DISTRICTS 10-12

- Local Affiliates
- Outreach Services
- Schools Visiting Museums or Historic Sites



Due to the re-opening of sites and programming after COVID-19, operations at the Society and outreach across the state are slowly continuing to return to normal service.

SOURCES: WISCONSIN HISTORICAL SOCIETY, LEGISLATIVE TECHNOLOGY SERVICES BUREAU (LTSB), GOOGLE ANALYTICS

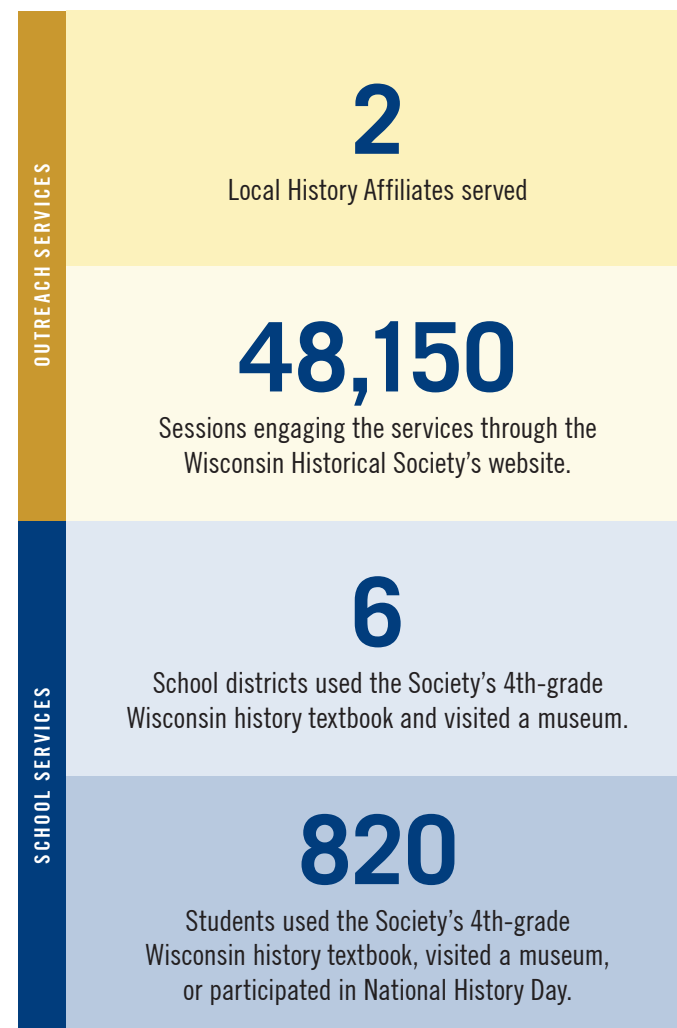
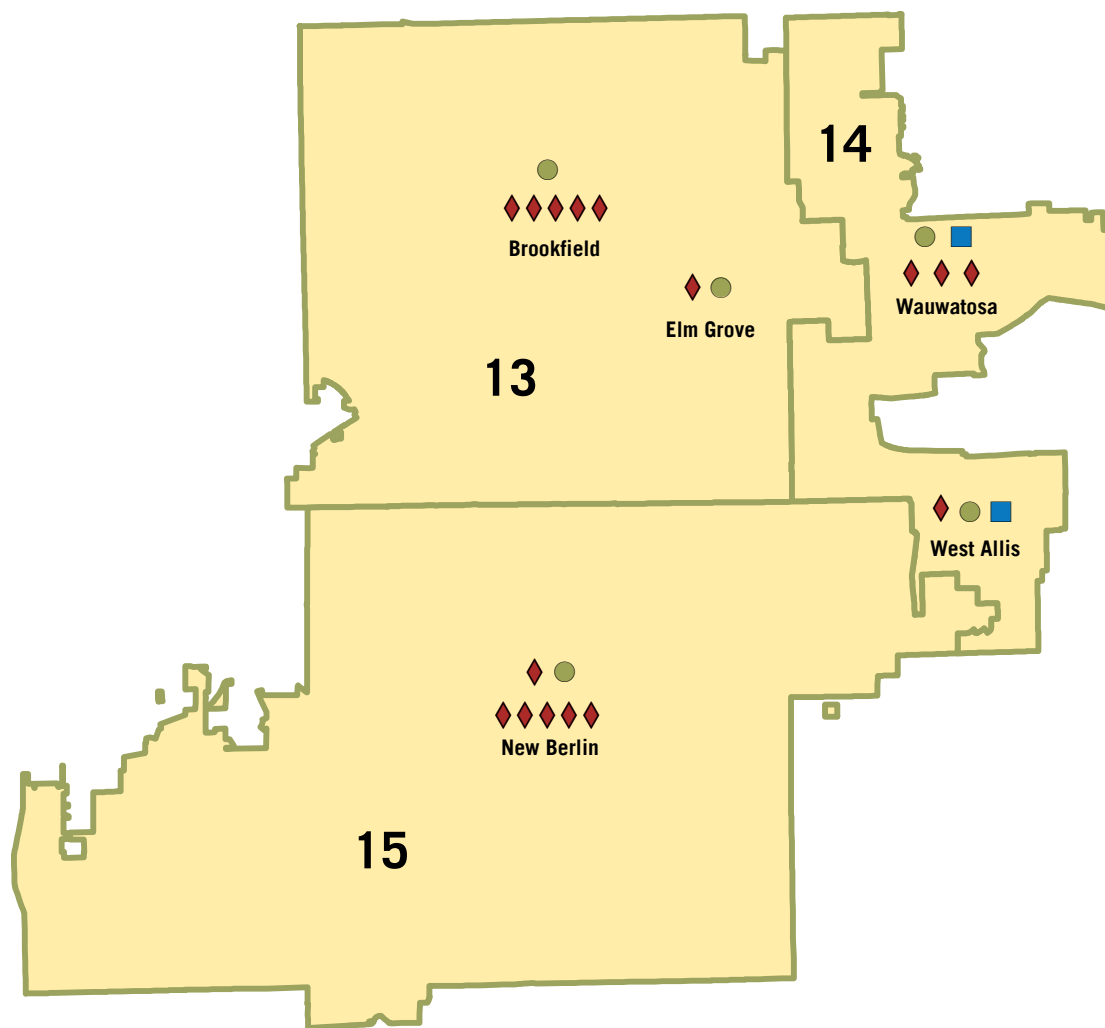
HOW WE SERVE YOUR DISTRICT



WISCONSIN
HISTORICAL
SOCIETY

Society resources used in Wisconsin's
SENATE DISTRICT 5
ASSEMBLY DISTRICTS 13-15

- Local Affiliates
- Outreach Services
- ◆ Schools Visiting Museums or Historic Sites



Due to the re-opening of sites and programming after COVID-19, operations at the Society and outreach across the state are slowly continuing to return to normal service.

SOURCES: WISCONSIN HISTORICAL SOCIETY, LEGISLATIVE TECHNOLOGY SERVICES BUREAU (LTSB), GOOGLE ANALYTICS

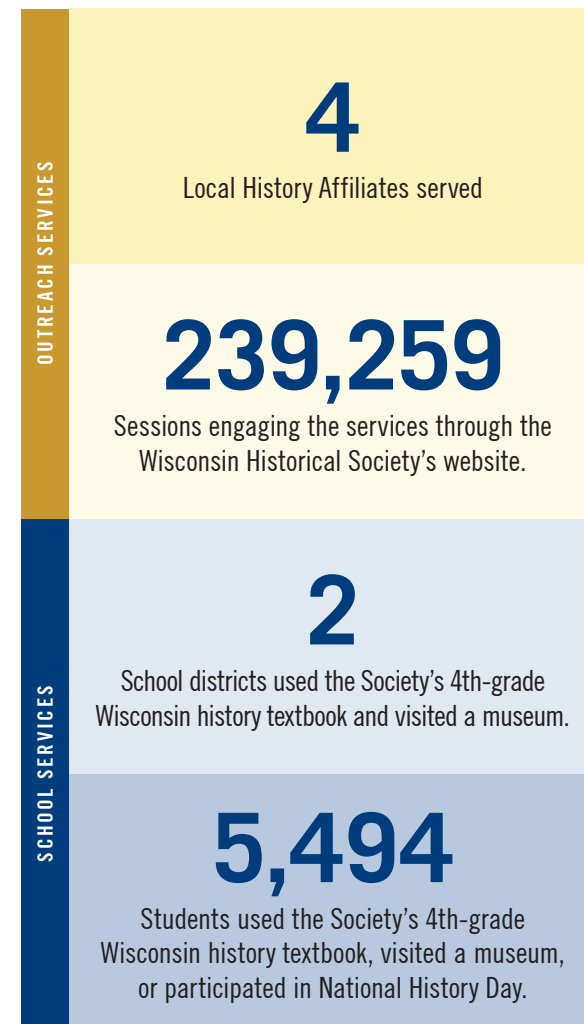
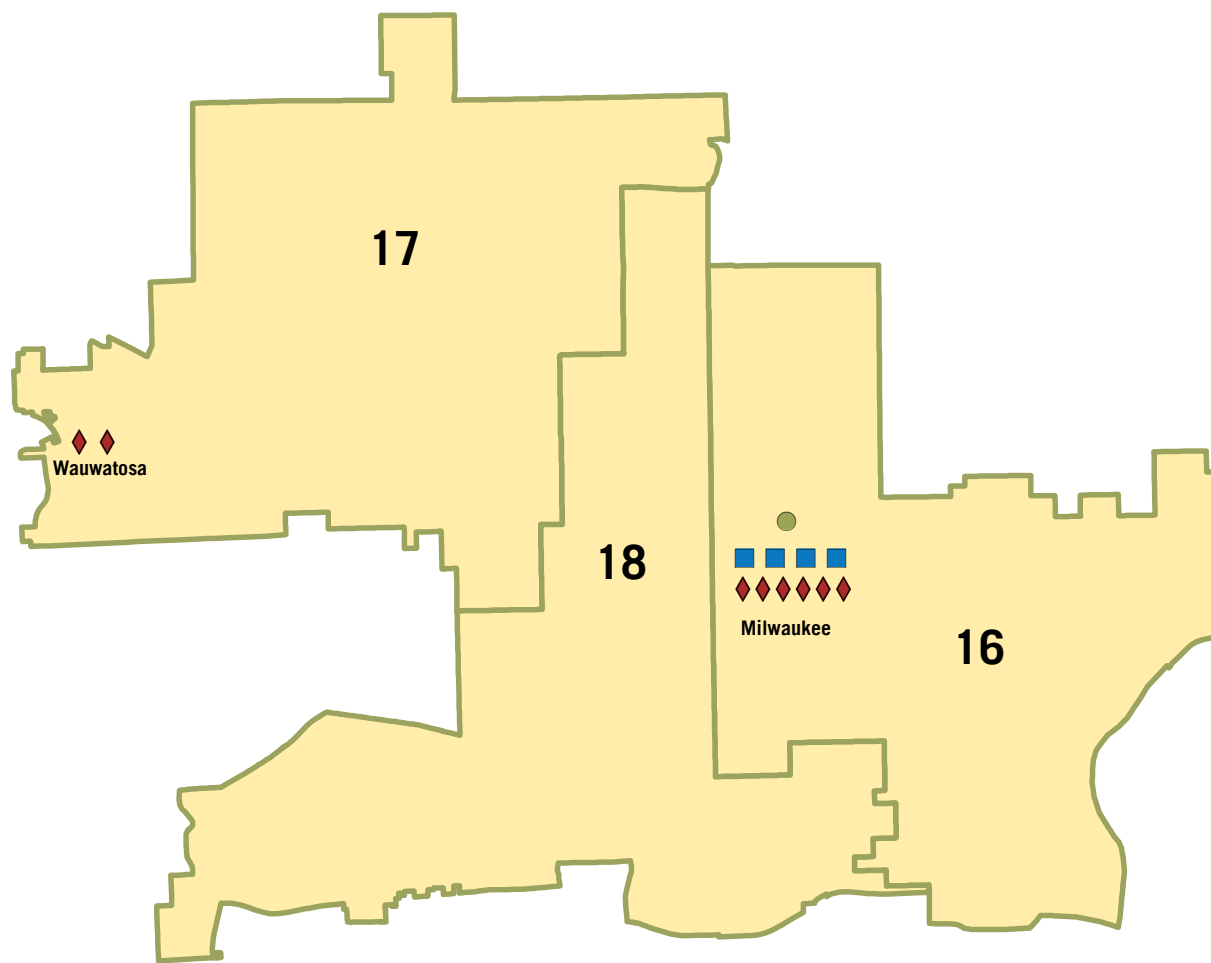
HOW WE SERVE YOUR DISTRICT



WISCONSIN
HISTORICAL
SOCIETY

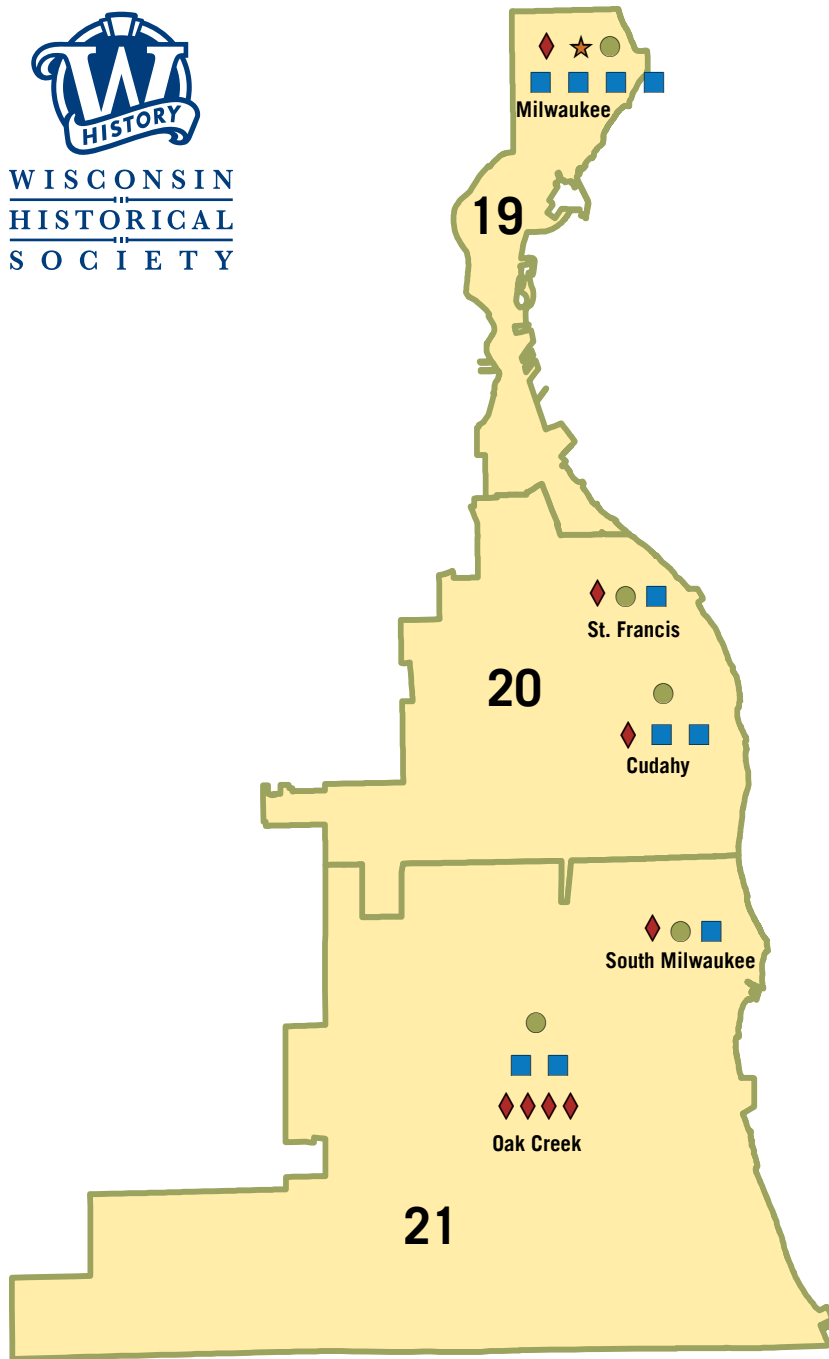
Society resources used in Wisconsin's
SENATE DISTRICT 6
ASSEMBLY DISTRICTS 16-18

- Local Affiliates
- Outreach Services
- Schools Visiting Museums or Historic Sites



Due to the re-opening of sites and programming after COVID-19, operations at the Society and outreach across the state are slowly continuing to return to normal service.

SOURCES: WISCONSIN HISTORICAL SOCIETY, LEGISLATIVE TECHNOLOGY SERVICES BUREAU (LTSB), GOOGLE ANALYTICS

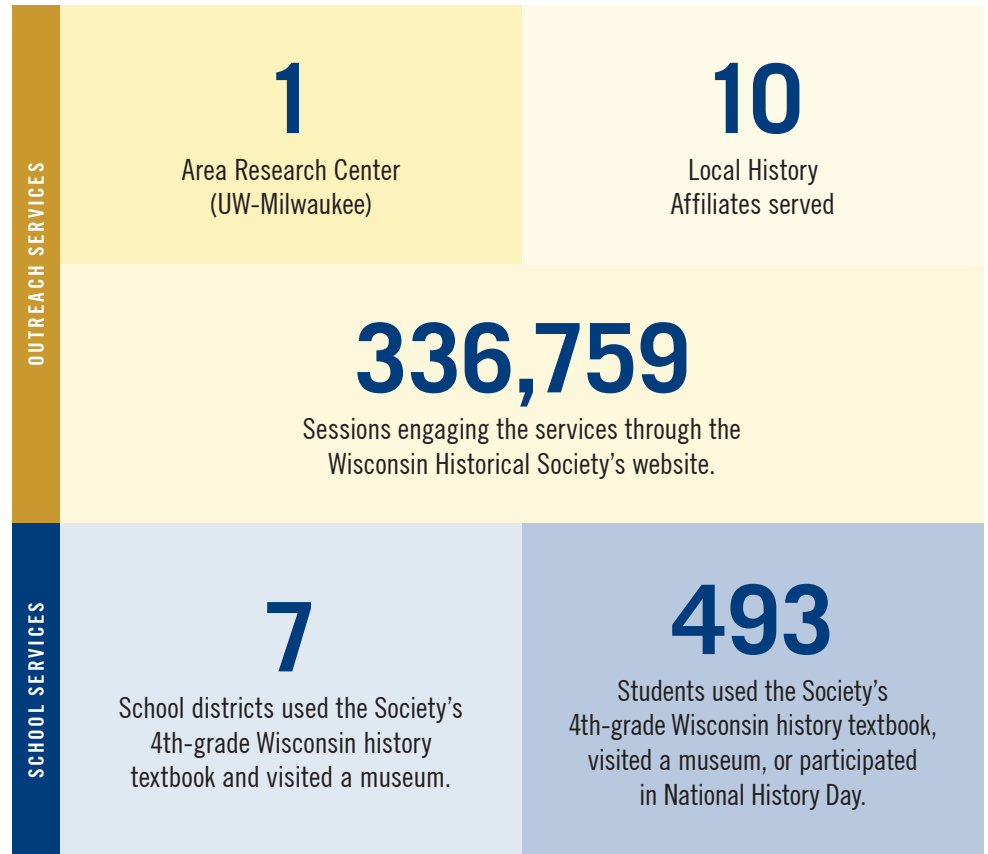


HOW WE SERVE YOUR DISTRICT

Society resources used in Wisconsin's

SENATE DISTRICT 7 | ASSEMBLY DISTRICTS 19-21

- Local Affiliates
- Outreach Services
- ★ Area Research Center
- ◆ Schools Visiting Museums or Historic Sites



Due to the re-opening of sites and programming after COVID-19, operations at the Society and outreach across the state are slowly continuing to return to normal service.

SOURCES: WISCONSIN HISTORICAL SOCIETY, LEGISLATIVE TECHNOLOGY SERVICES BUREAU (LTSB), GOOGLE ANALYTICS

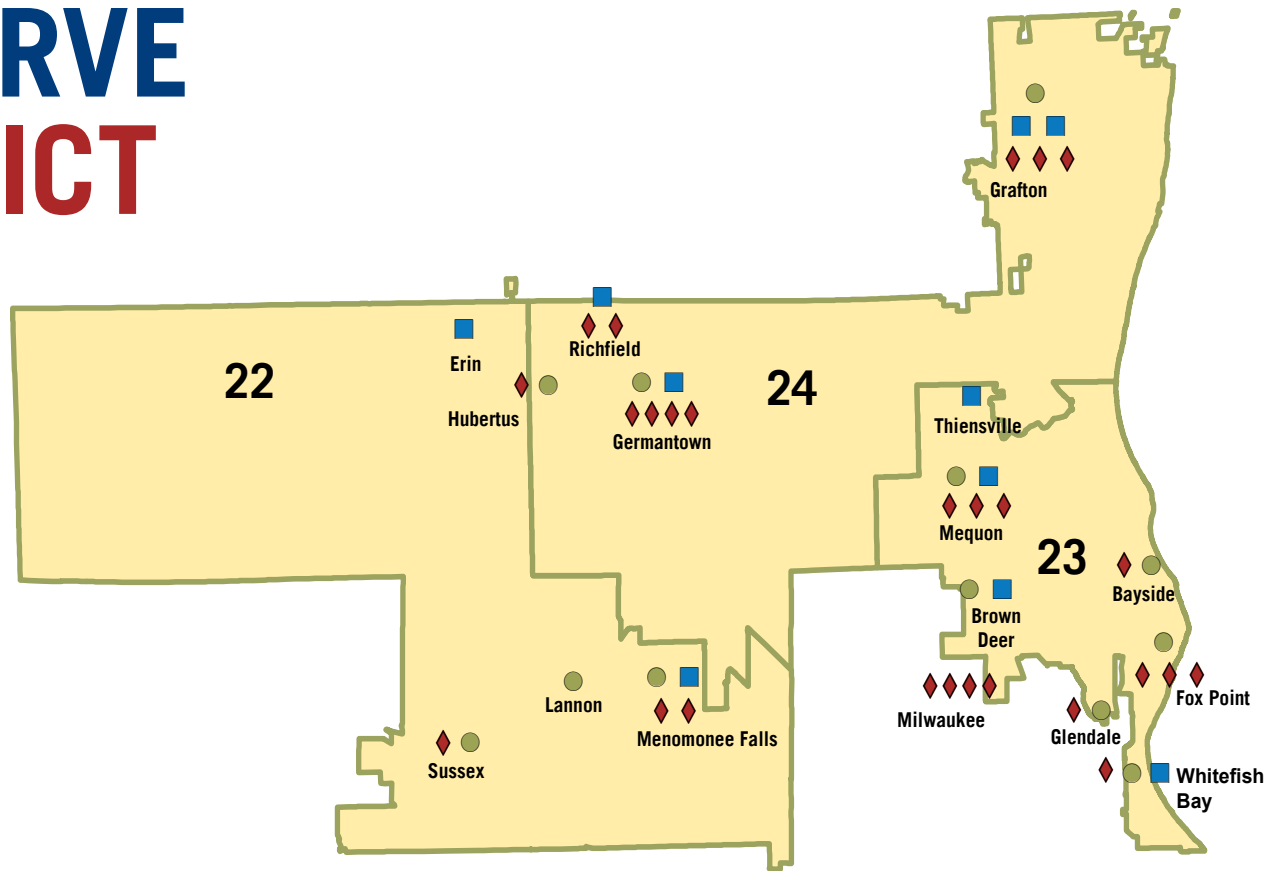
HOW WE SERVE YOUR DISTRICT

Society resources used in Wisconsin's
SENATE DISTRICT 8
ASSEMBLY DISTRICTS 22-24

- Local Affiliates
- Outreach Services
- ◆ Schools Visiting Museums or Historic Sites



WISCONSIN
HISTORICAL
SOCIETY



OUTREACH SERVICES

10

Local History
Affiliates served

231,120

Sessions engaging the services
through the Wisconsin
Historical Society's website.

SCHOOL SERVICES

22

School districts used the Society's
4th-grade Wisconsin history
textbook and visited a museum.

1,897

Students used the Society's
4th-grade Wisconsin history textbook,
visited a museum, or participated
in National History Day.

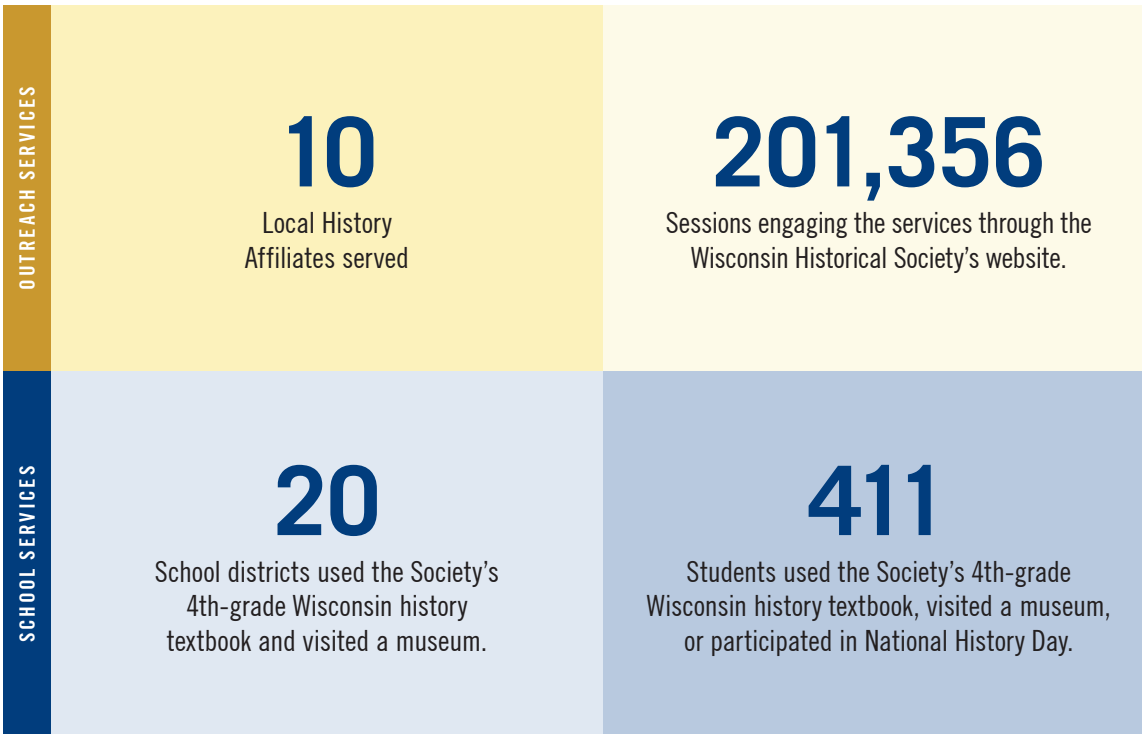
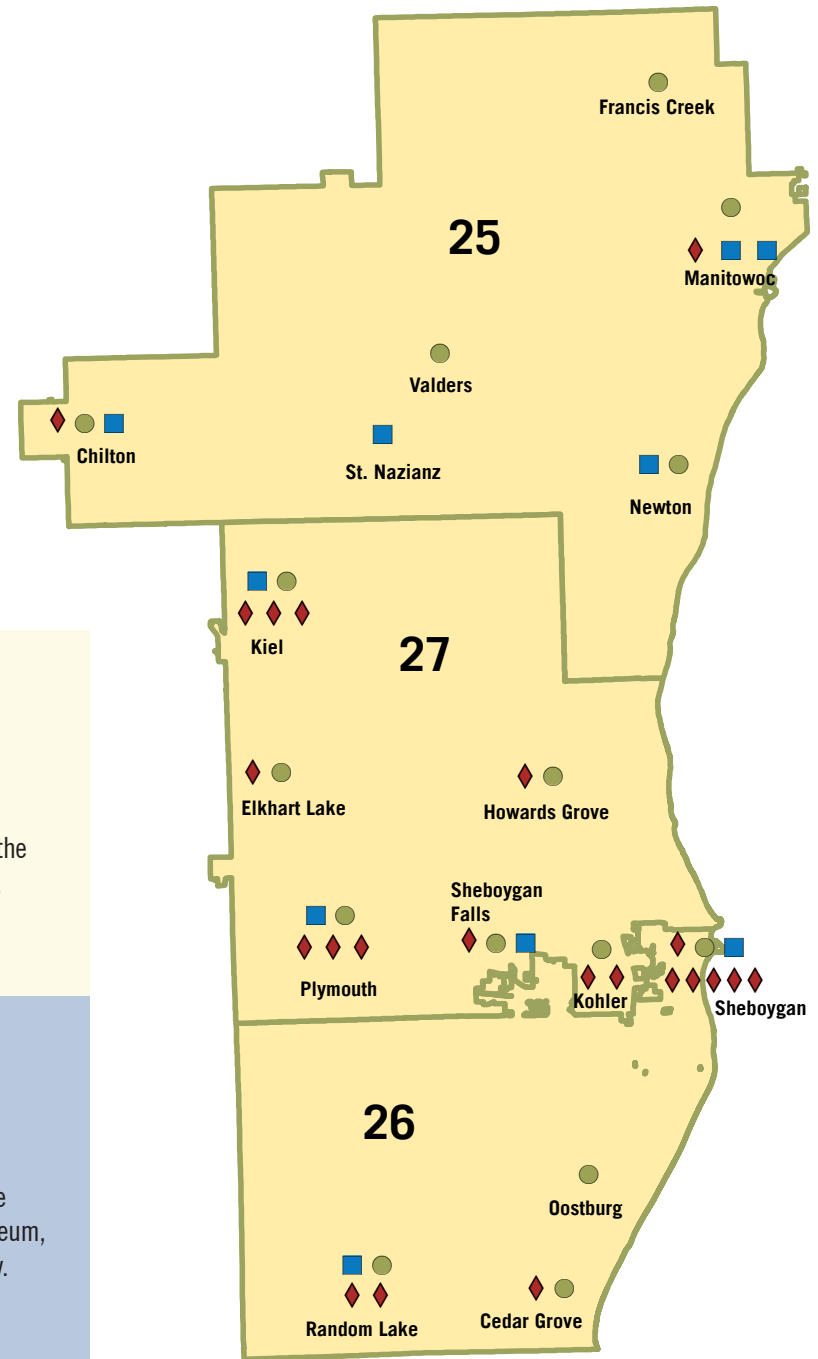
Due to the re-opening of sites and programming after COVID-19, operations at the Society and outreach across the state are slowly continuing to return to normal service.

SOURCES: WISCONSIN HISTORICAL SOCIETY, LEGISLATIVE TECHNOLOGY SERVICES BUREAU (LTSB), GOOGLE ANALYTICS

HOW WE SERVE YOUR DISTRICT

Society resources used in Wisconsin's
SENATE DISTRICT 9
ASSEMBLY DISTRICTS 25-27

- Local Affiliates
- Outreach Services
- ◆ Schools Visiting Museums or Historic Sites



Due to the re-opening of sites and programming after COVID-19, operations at the Society and outreach across the state are slowly continuing to return to normal service.

SOURCES: WISCONSIN HISTORICAL SOCIETY, LEGISLATIVE TECHNOLOGY SERVICES BUREAU (LTSB), GOOGLE ANALYTICS

HOW WE SERVE YOUR DISTRICT

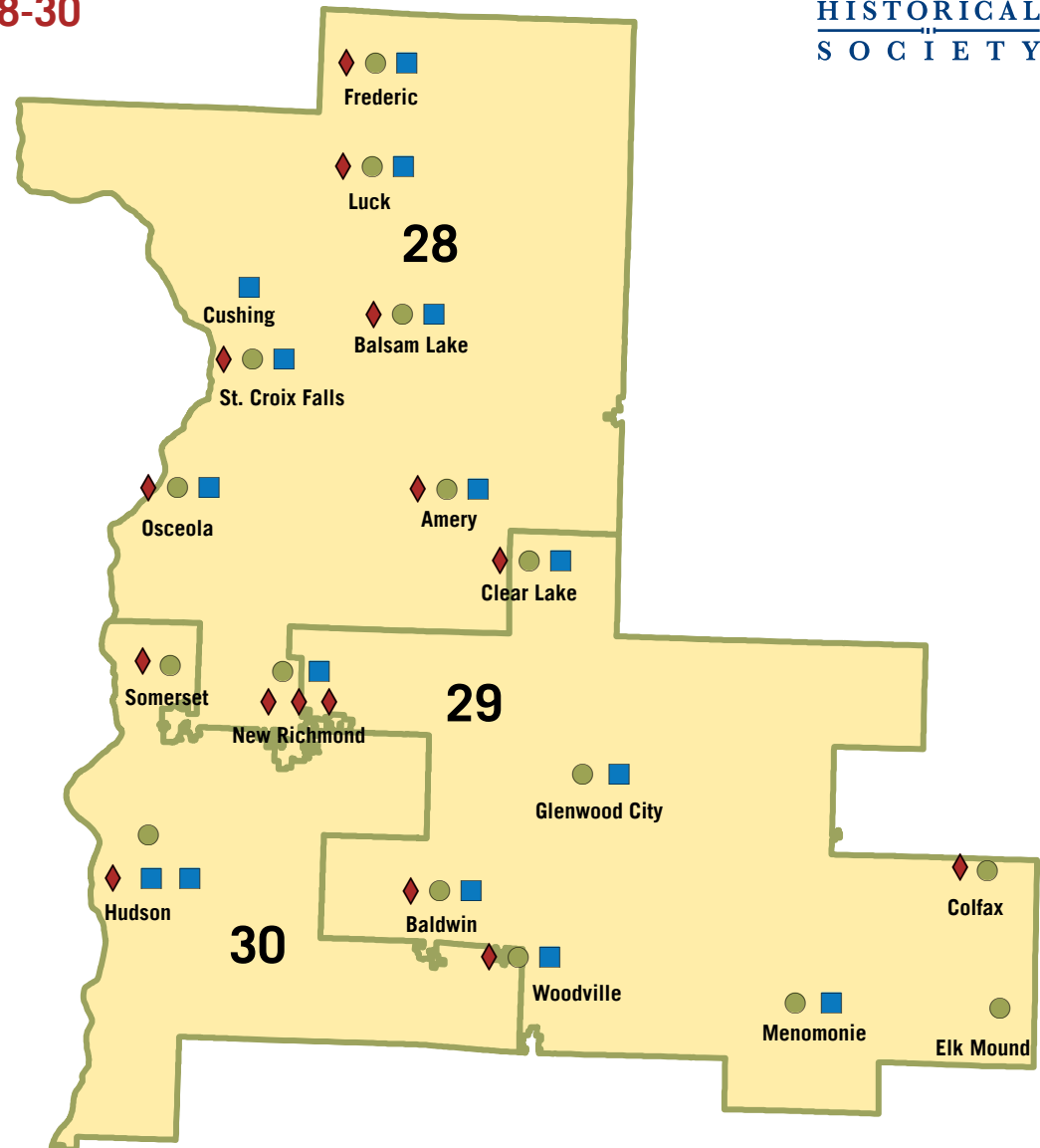
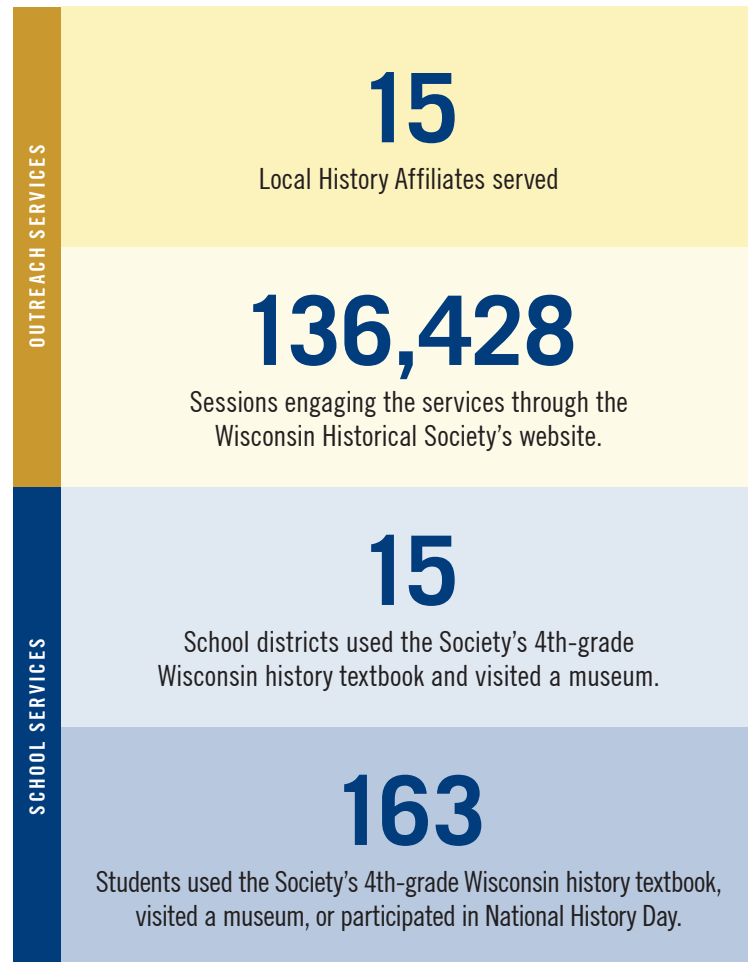


WISCONSIN
HISTORICAL
SOCIETY

Society resources used in Wisconsin's

SENATE DISTRICT 10 | ASSEMBLY DISTRICTS 28-30

- Local Affiliates
- Outreach Services
- ◆ Schools Visiting Museums or Historic Sites



Due to the re-opening of sites and programming after COVID-19, operations at the Society and outreach across the state are slowly continuing to return to normal service.

SOURCES: WISCONSIN HISTORICAL SOCIETY, LEGISLATIVE TECHNOLOGY SERVICES BUREAU (LTSB), GOOGLE ANALYTICS

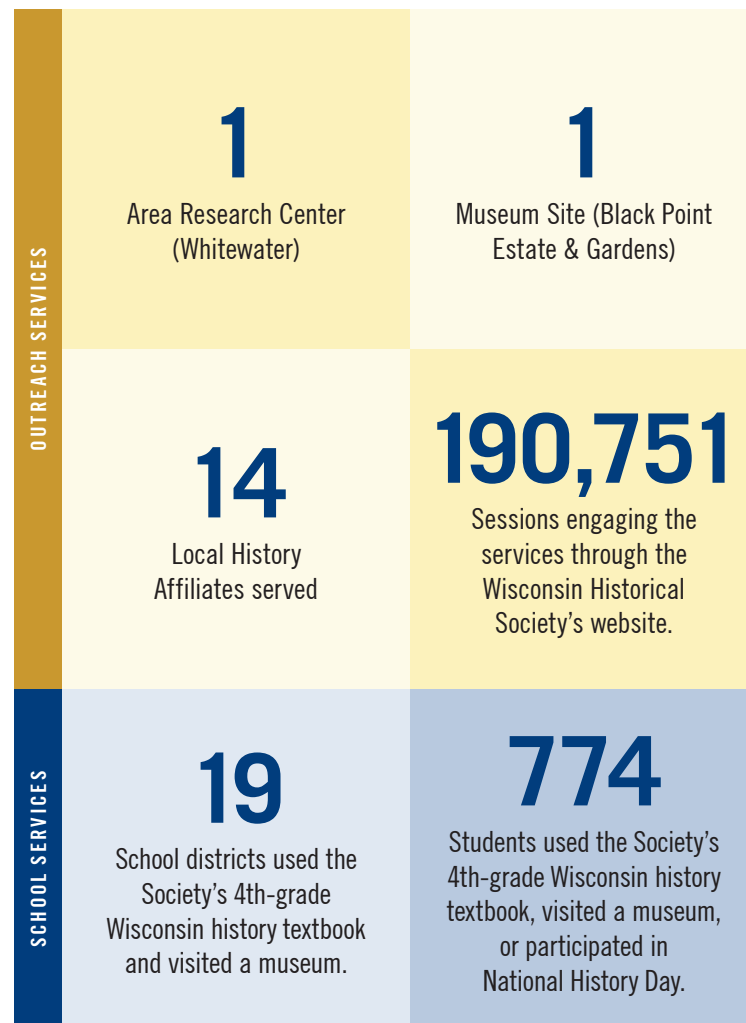
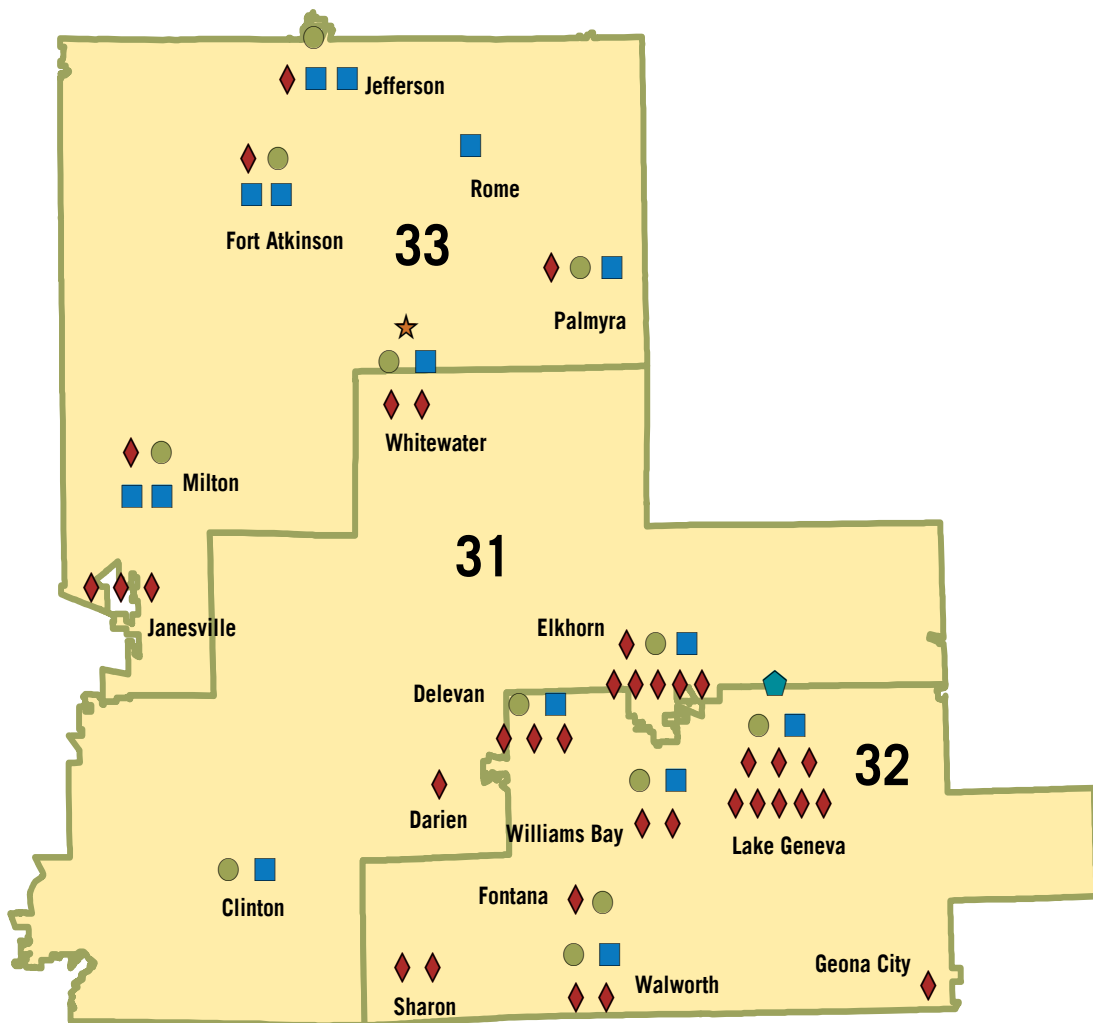
HOW WE SERVE YOUR DISTRICT



WISCONSIN
HISTORICAL
SOCIETY

Society resources used in Wisconsin's
SENATE DISTRICT 11
ASSEMBLY DISTRICTS 31-33

- Local Affiliates
- Outreach Services
- ◆ Schools Visiting Museums or Historic Sites
- ⬠ Society Museum or Historic Site
- ★ Area Research Center



Due to the re-opening of sites and programming after COVID-19, operations at the Society and outreach across the state are slowly continuing to return to normal service.

SOURCES: WISCONSIN HISTORICAL SOCIETY, LEGISLATIVE TECHNOLOGY SERVICES BUREAU (LTSB), GOOGLE ANALYTICS

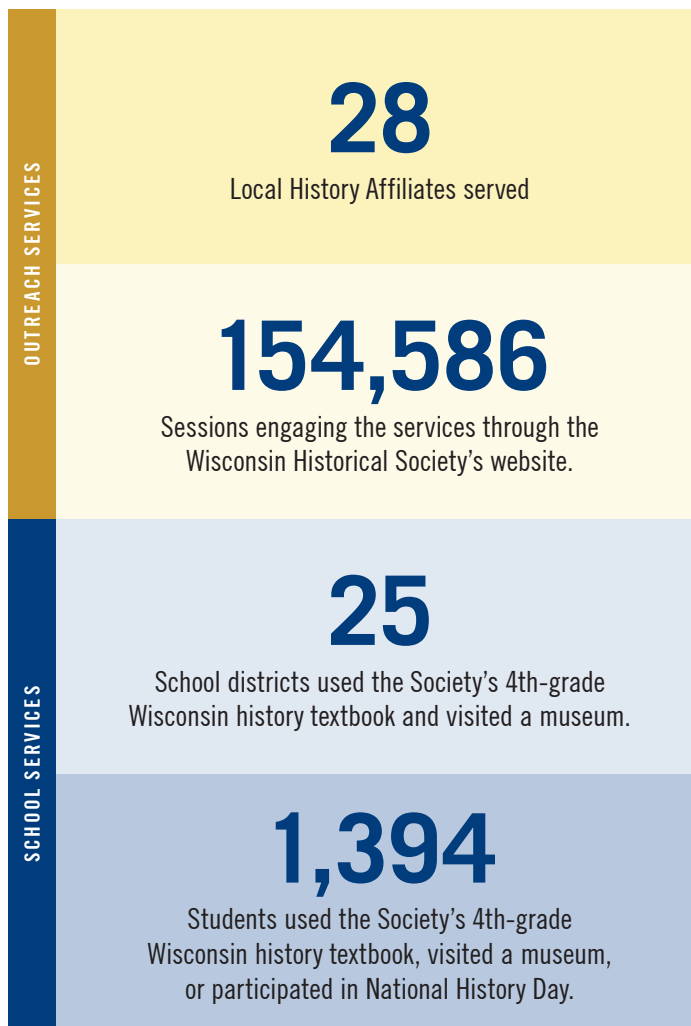
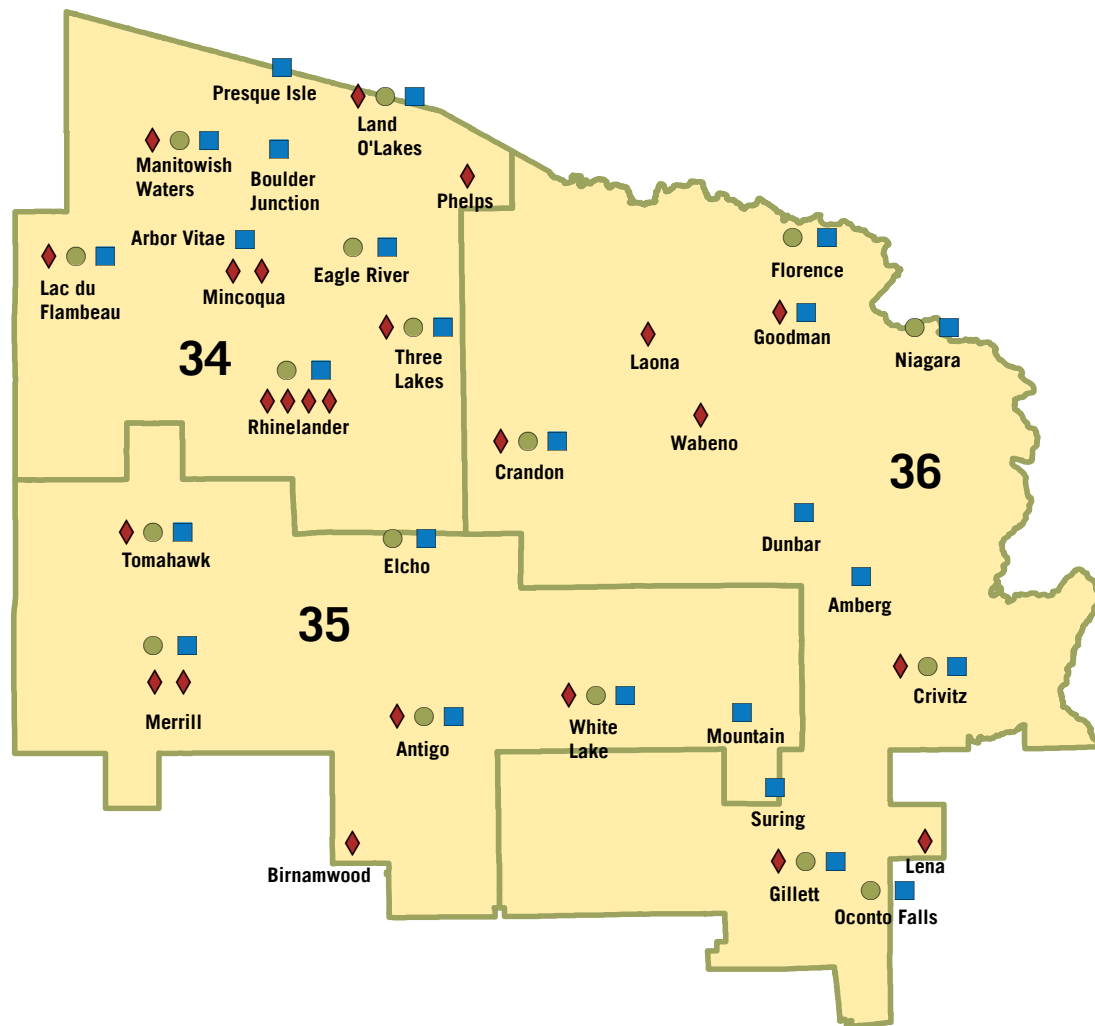
HOW WE SERVE YOUR DISTRICT



WISCONSIN
HISTORICAL
SOCIETY

Society resources used in Wisconsin's
SENATE DISTRICT 12
ASSEMBLY DISTRICTS 34-36

- Local Affiliates
- Outreach Services
- ◆ Schools Visiting Museums or Historic Sites



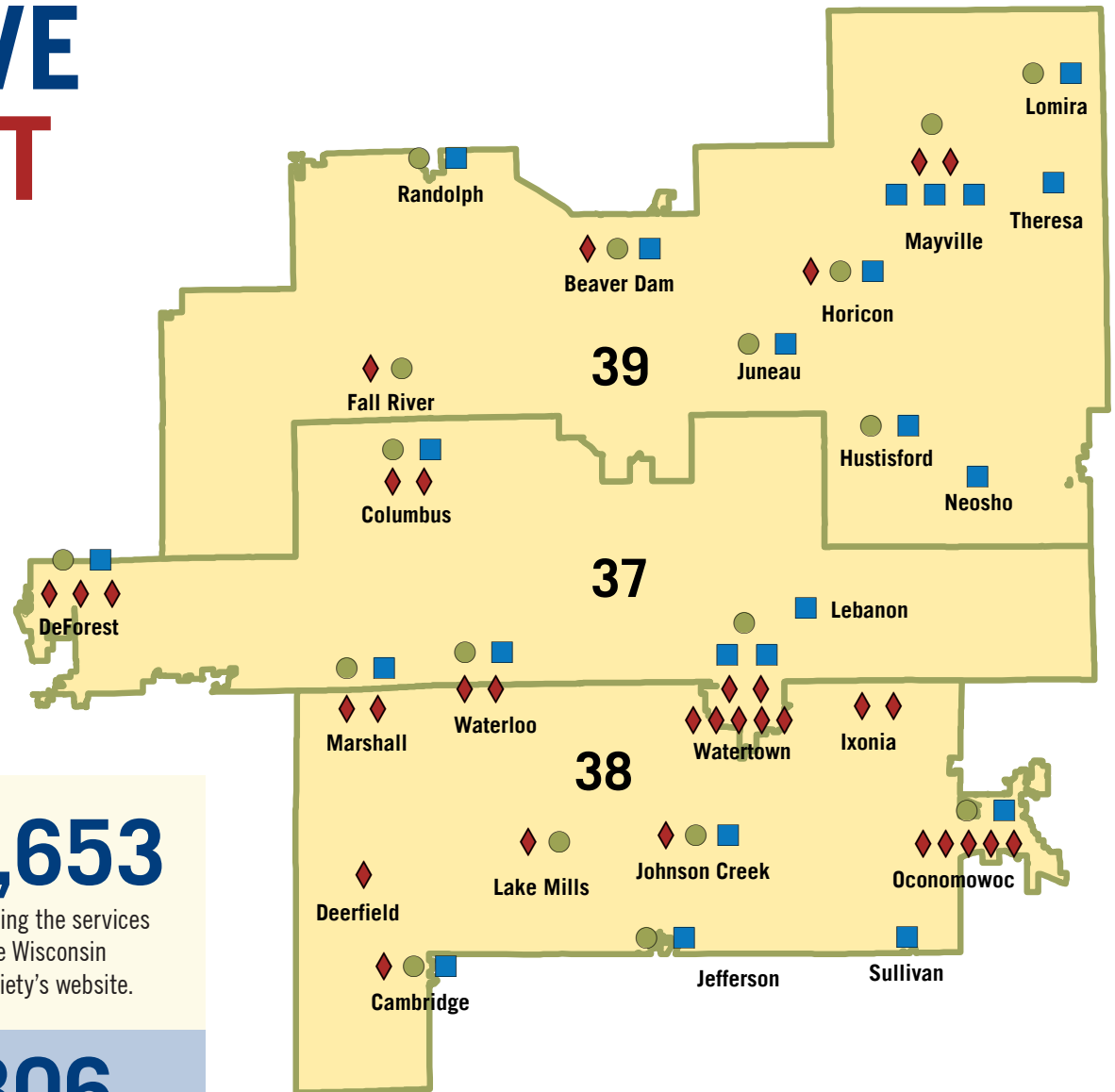
Due to the re-opening of sites and programming after COVID-19, operations at the Society and outreach across the state are slowly continuing to return to normal service.

SOURCES: WISCONSIN HISTORICAL SOCIETY, LEGISLATIVE TECHNOLOGY SERVICES BUREAU (LTSB), GOOGLE ANALYTICS

HOW WE SERVE YOUR DISTRICT

Society resources used in Wisconsin's
SENATE DISTRICT 13
ASSEMBLY DISTRICTS 37-39

- Local Affiliates
- Outreach Services
- ◆ Schools Visiting Museums or Historic Sites



OUTREACH SERVICES	<h2>23</h2> <p>Local History Affiliates served</p>	<h2>304,653</h2> <p>Sessions engaging the services through the Wisconsin Historical Society's website.</p>
SCHOOL SERVICES	<h2>26</h2> <p>School districts used the Society's 4th-grade Wisconsin history textbook and visited a museum.</p>	<h2>2,306</h2> <p>Students used the Society's 4th-grade Wisconsin history textbook, visited a museum, or participated in National History Day.</p>



Due to the re-opening of sites and programming after COVID-19, operations at the Society and outreach across the state are slowly continuing to return to normal service.

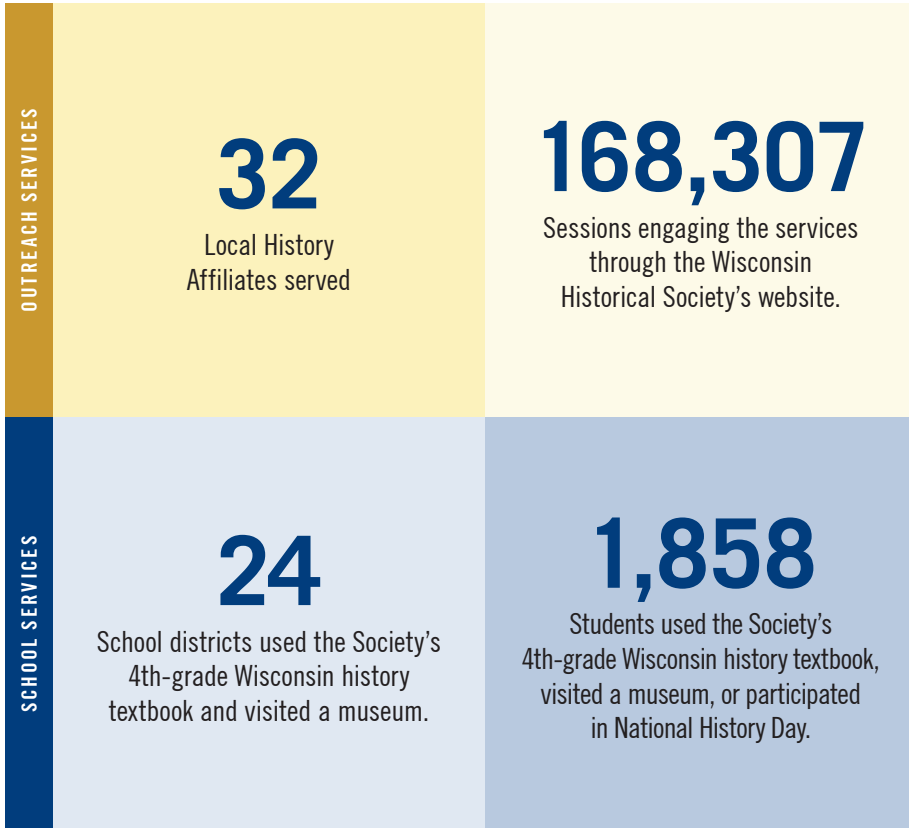
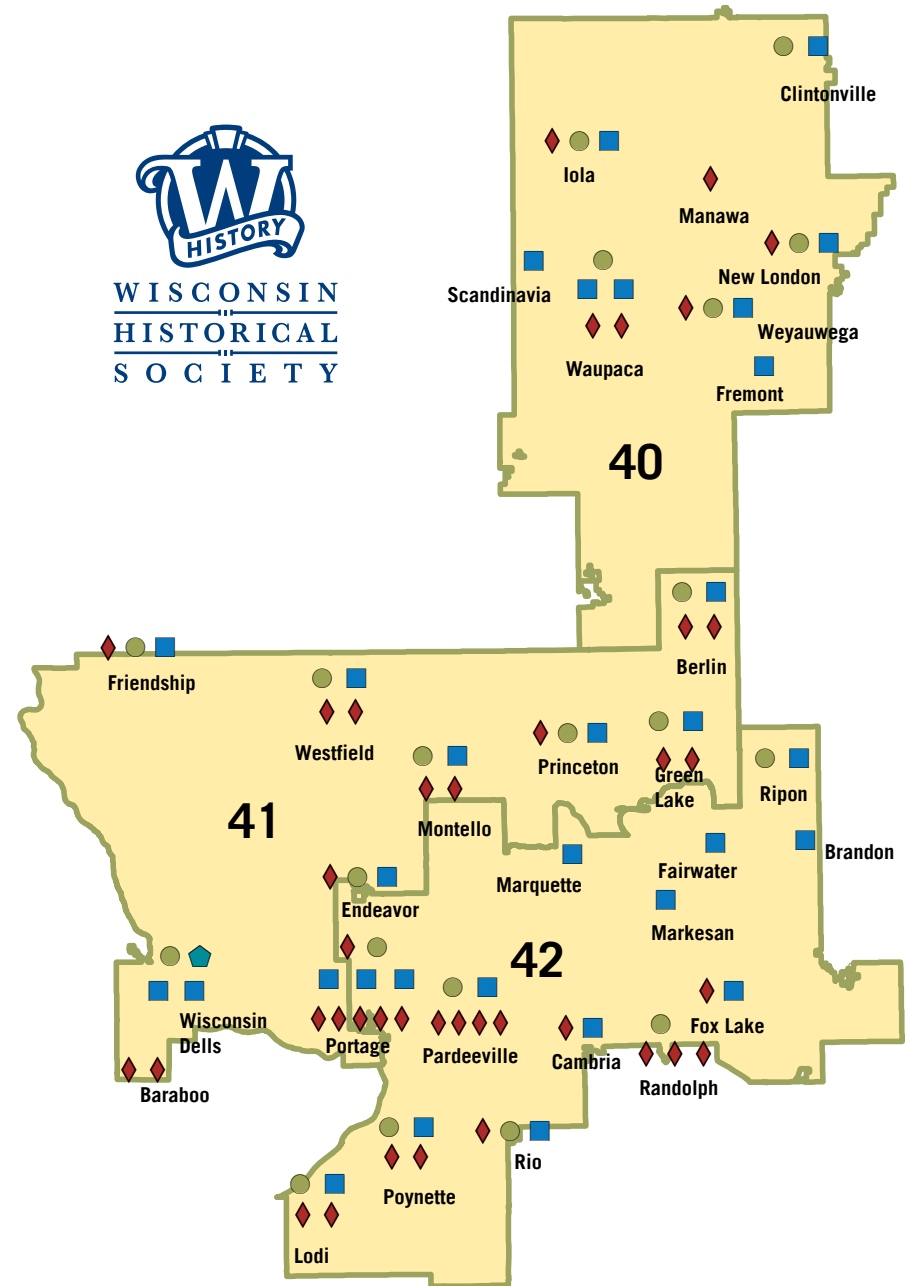
SOURCES: WISCONSIN HISTORICAL SOCIETY, LEGISLATIVE TECHNOLOGY SERVICES BUREAU (LTSB), GOOGLE ANALYTICS

HOW WE SERVE YOUR DISTRICT

Society resources used in Wisconsin's

SENATE DISTRICT 14 | ASSEMBLY DISTRICTS 40-42

- Local Affiliates
- ◆ Schools Visiting Museums or Historic Sites
- Outreach Services
- ◆ Society Museum or Historic Site



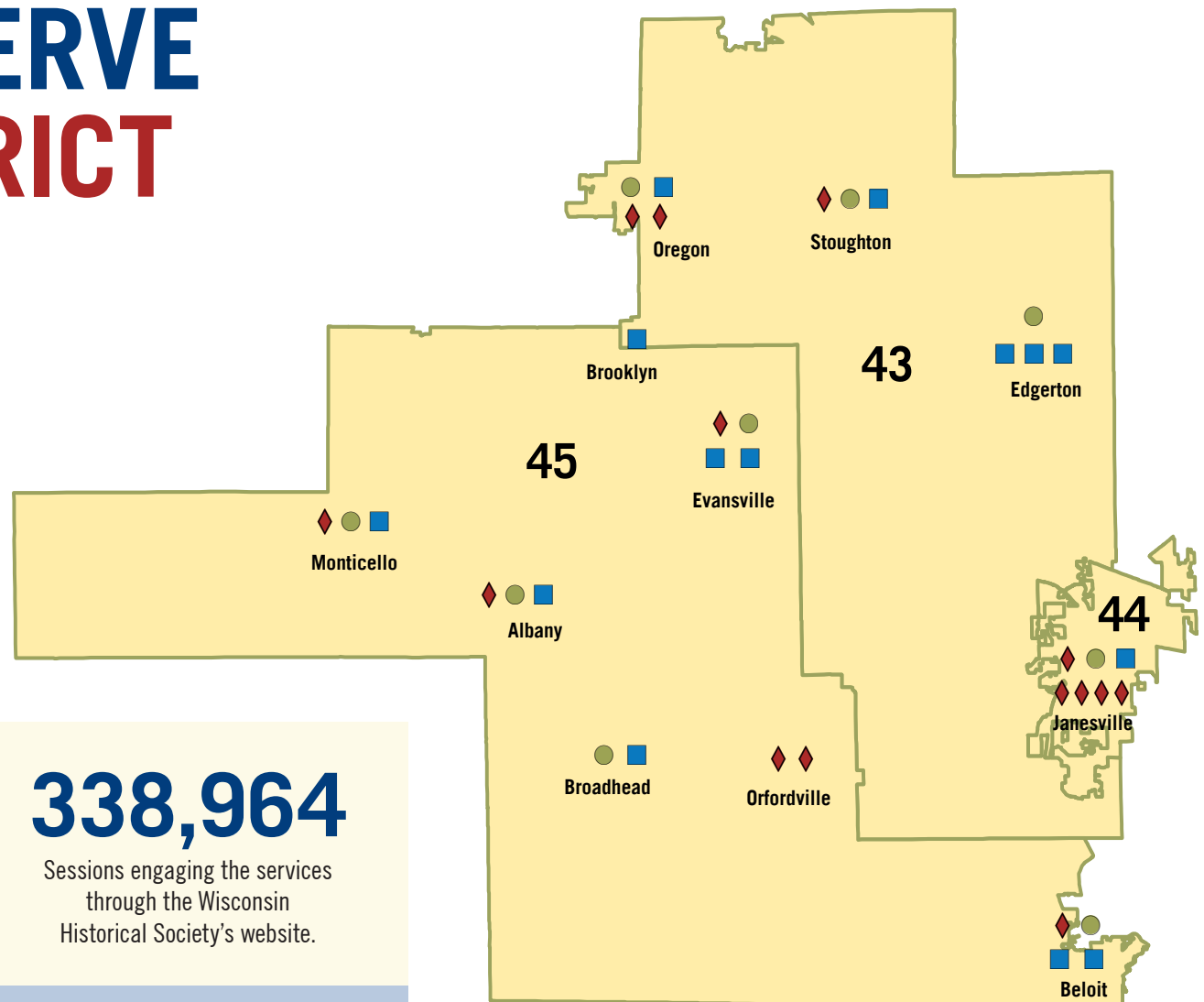
Due to the re-opening of sites and programming after COVID-19, operations at the Society and outreach across the state are slowly continuing to return to normal service.

SOURCES: WISCONSIN HISTORICAL SOCIETY, LEGISLATIVE TECHNOLOGY SERVICES BUREAU (LTSB), GOOGLE ANALYTICS

HOW WE SERVE YOUR DISTRICT

Society resources used in Wisconsin's
SENATE DISTRICT 15
ASSEMBLY DISTRICTS 43-45

- Local Affiliates
- Outreach Services
- ◆ Society Museum or Historic Site



OUTREACH SERVICES	<h2>15</h2> <p>Local History Affiliates served</p>	<h2>338,964</h2> <p>Sessions engaging the services through the Wisconsin Historical Society's website.</p>
SCHOOL SERVICES	<h2>12</h2> <p>School districts used the Society's 4th-grade Wisconsin history textbook and visited a museum.</p>	<h2>1,981</h2> <p>Students used the Society's 4th-grade Wisconsin history textbook, visited a museum, or participated in National History Day.</p>



Due to the re-opening of sites and programming after COVID-19, operations at the Society and outreach across the state are slowly continuing to return to normal service.

SOURCES: WISCONSIN HISTORICAL SOCIETY, LEGISLATIVE TECHNOLOGY SERVICES BUREAU (LTSB), GOOGLE ANALYTICS

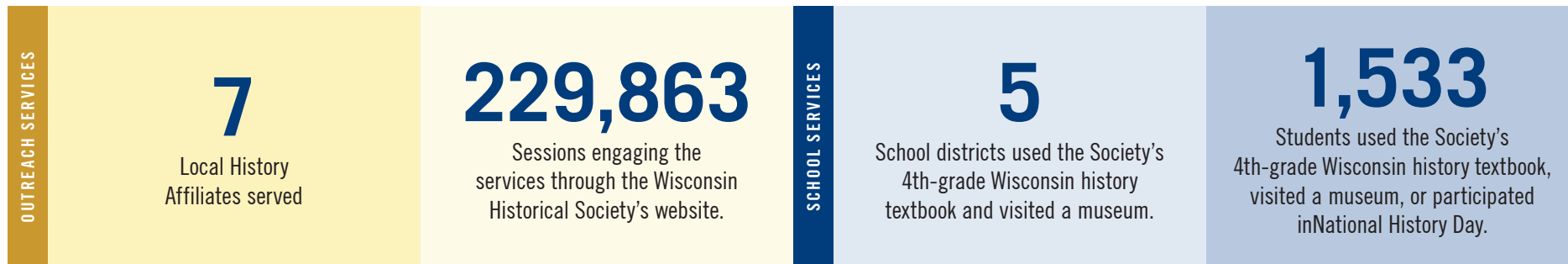
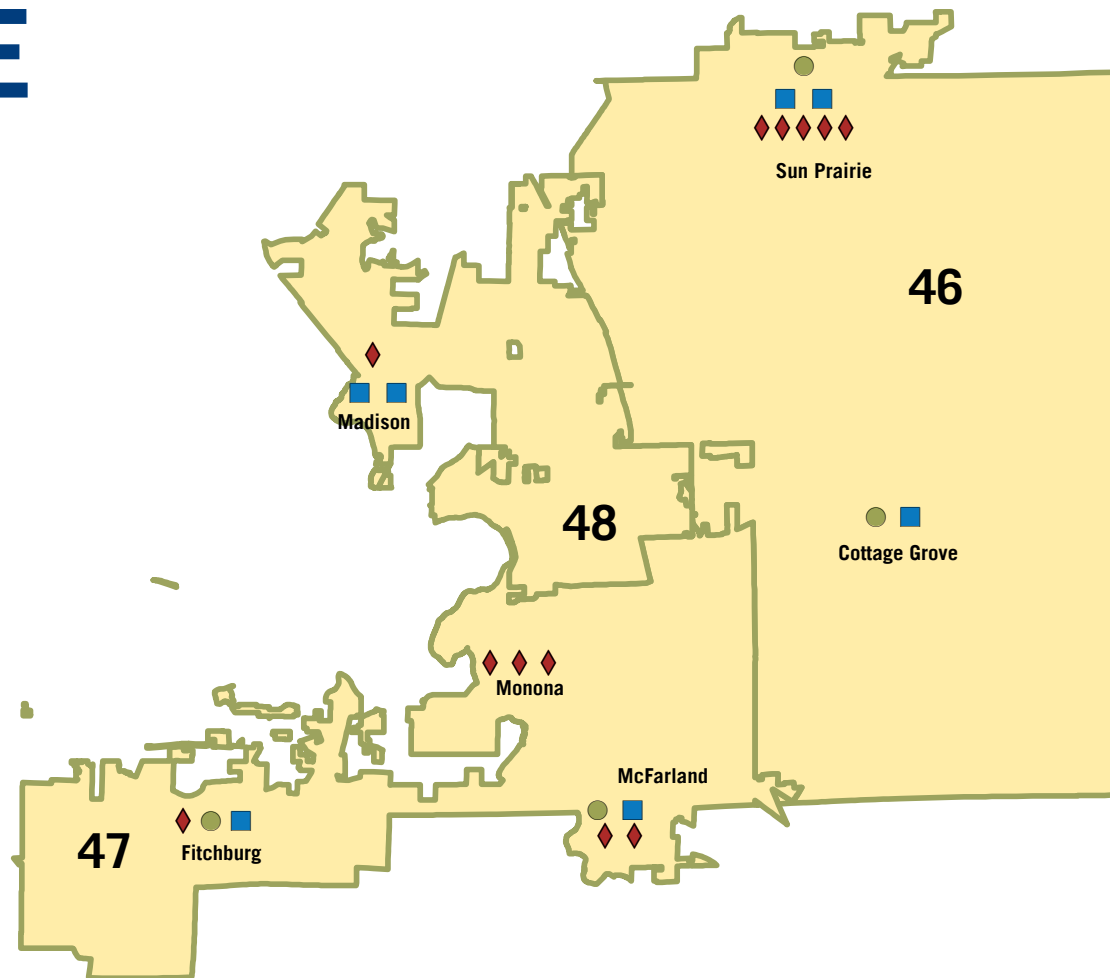
HOW WE SERVE YOUR DISTRICT

Society resources used in Wisconsin's
SENATE DISTRICT 16
ASSEMBLY DISTRICTS 46-48

- Local Affiliates
- Outreach Services
- ◆ Schools Visiting Museums or Historic Sites



WISCONSIN
HISTORICAL
SOCIETY



Due to the re-opening of sites and programming after COVID-19, operations at the Society and outreach across the state are slowly continuing to return to normal service.

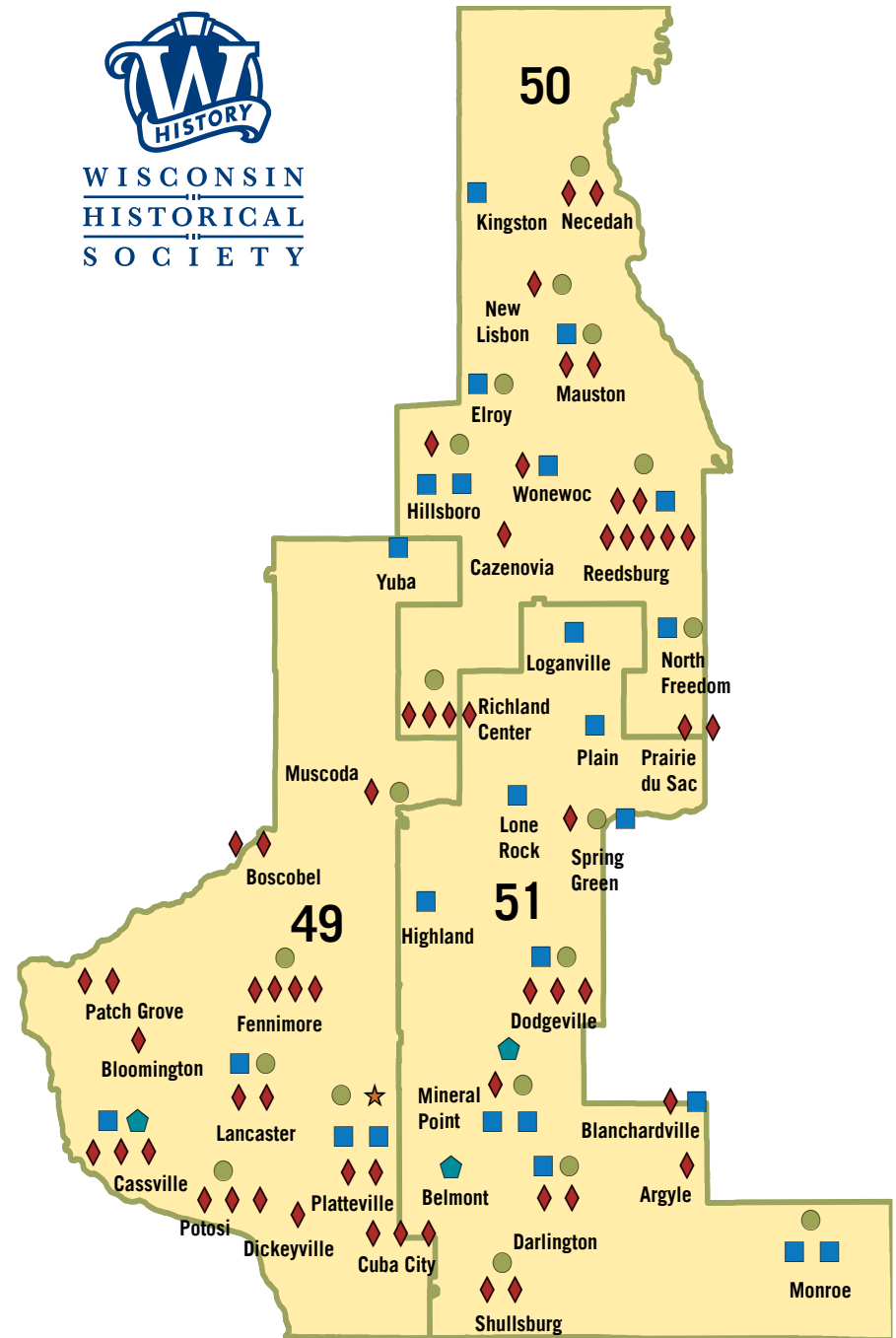
SOURCES: WISCONSIN HISTORICAL SOCIETY, LEGISLATIVE TECHNOLOGY SERVICES BUREAU (LTSB), GOOGLE ANALYTICS

HOW WE SERVE YOUR DISTRICT

Society resources used in Wisconsin's

SENATE DISTRICT 17 | ASSEMBLY DISTRICTS 49-51

- Local Affiliates
- Outreach Services
- ★ Area Research Center
- ◆ Schools Visiting Museums or Historic Sites
- ◆ Society Museum or Historic Site



Due to the re-opening of sites and programming after COVID-19, operations at the Society and outreach across the state are slowly continuing to return to normal service.

SOURCES: WISCONSIN HISTORICAL SOCIETY, LEGISLATIVE TECHNOLOGY SERVICES BUREAU (LTSB), GOOGLE ANALYTICS

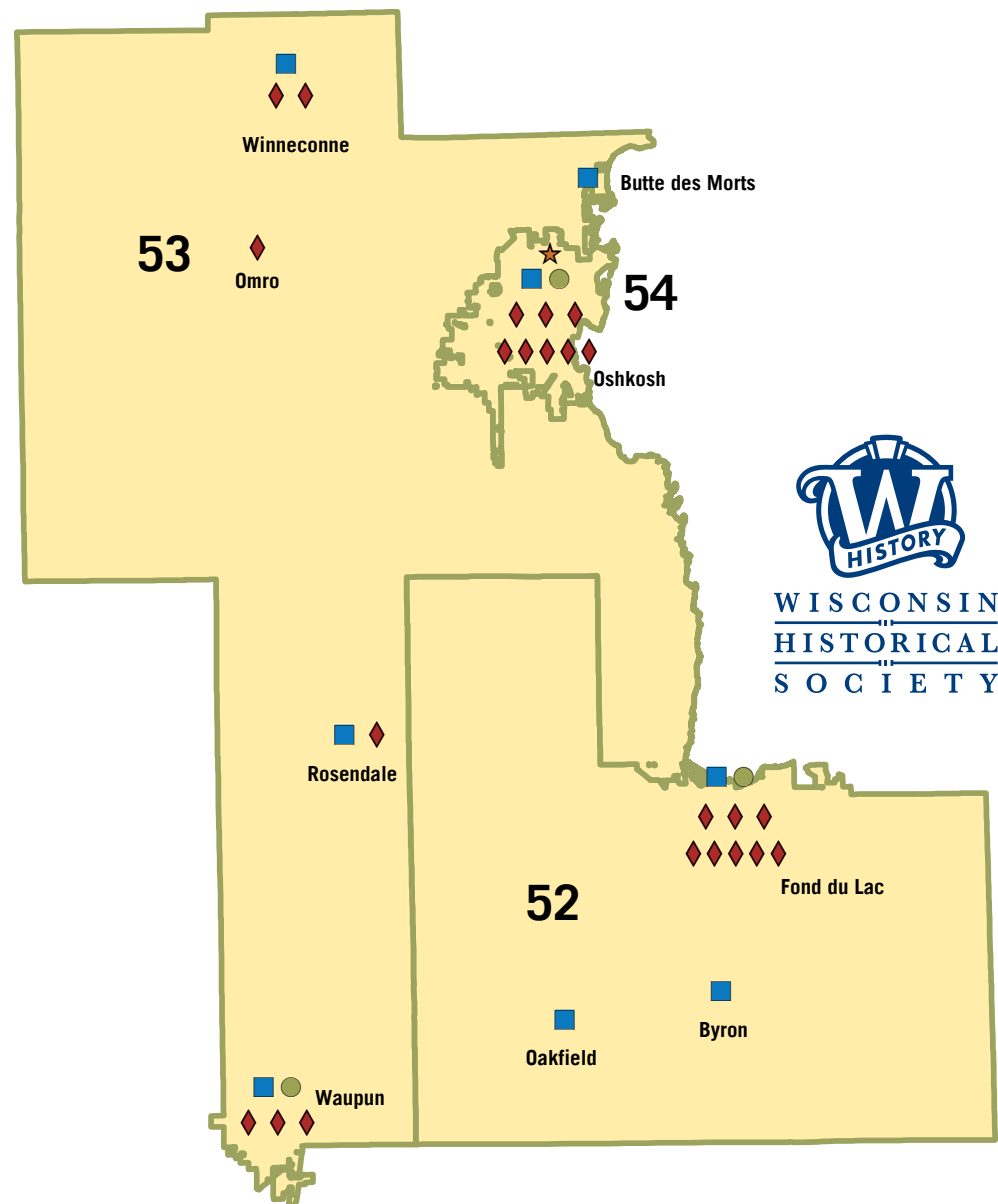
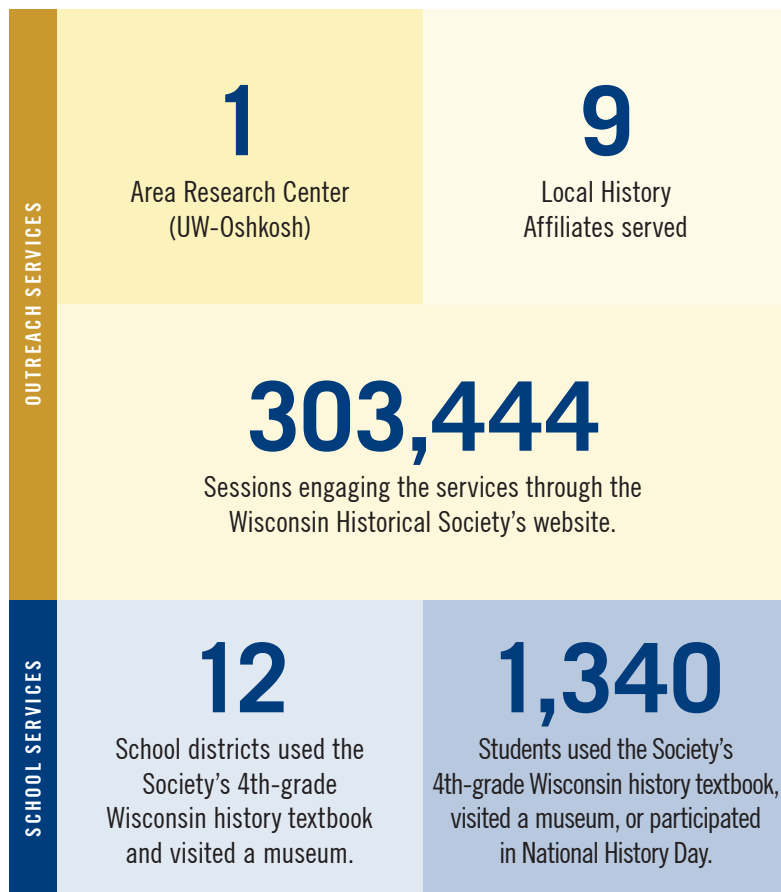
HOW WE SERVE YOUR DISTRICT

Society resources used in Wisconsin's

SENATE DISTRICT 18

ASSEMBLY DISTRICTS 52-54

- Local Affiliates
- ◆ Schools Visiting Museums or Historic Sites
- Outreach Services
- ★ Area Research Center



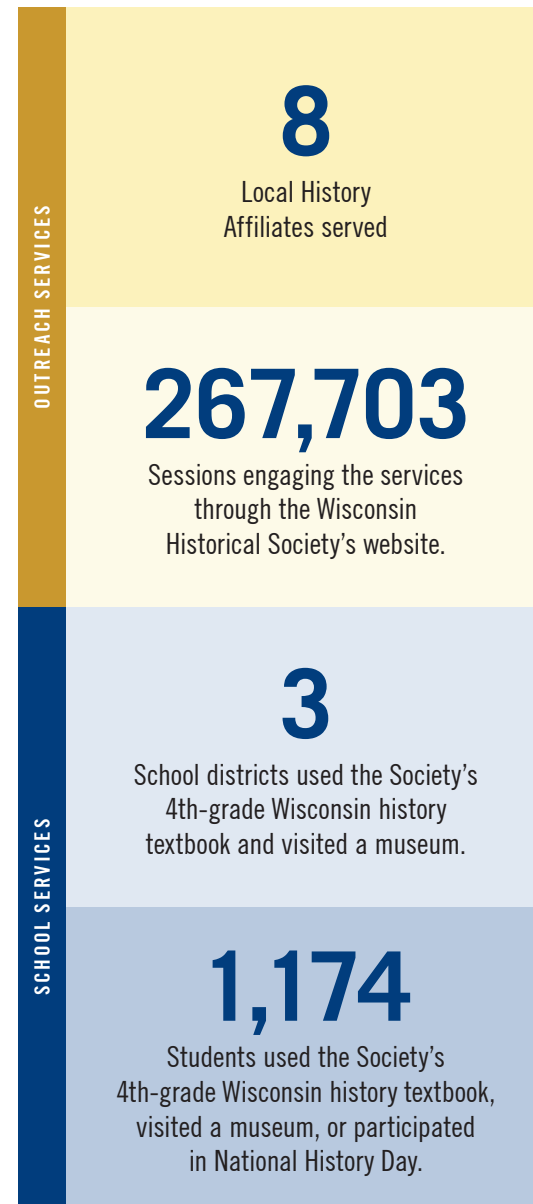
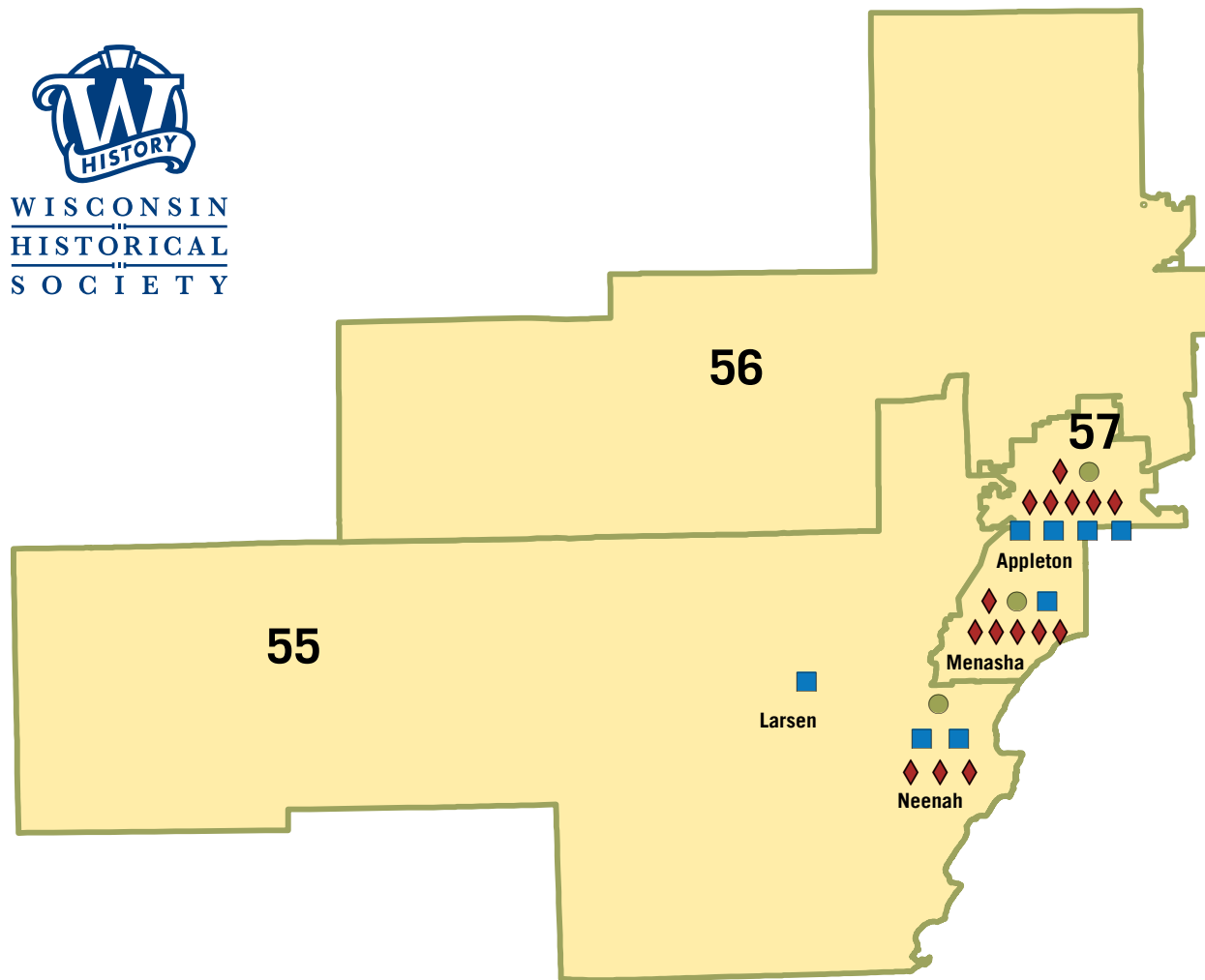
Due to the re-opening of sites and programming after COVID-19, operations at the Society and outreach across the state are slowly continuing to return to normal service.

SOURCES: WISCONSIN HISTORICAL SOCIETY, LEGISLATIVE TECHNOLOGY SERVICES BUREAU (LTSB), GOOGLE ANALYTICS

HOW WE SERVE YOUR DISTRICT

Society resources used in Wisconsin's
SENATE DISTRICT 19
ASSEMBLY DISTRICTS 55-57

- Local Affiliates
- Outreach Services
- ◆ Schools Visiting Museums or Historic Sites



Due to the re-opening of sites and programming after COVID-19, operations at the Society and outreach across the state are slowly continuing to return to normal service.

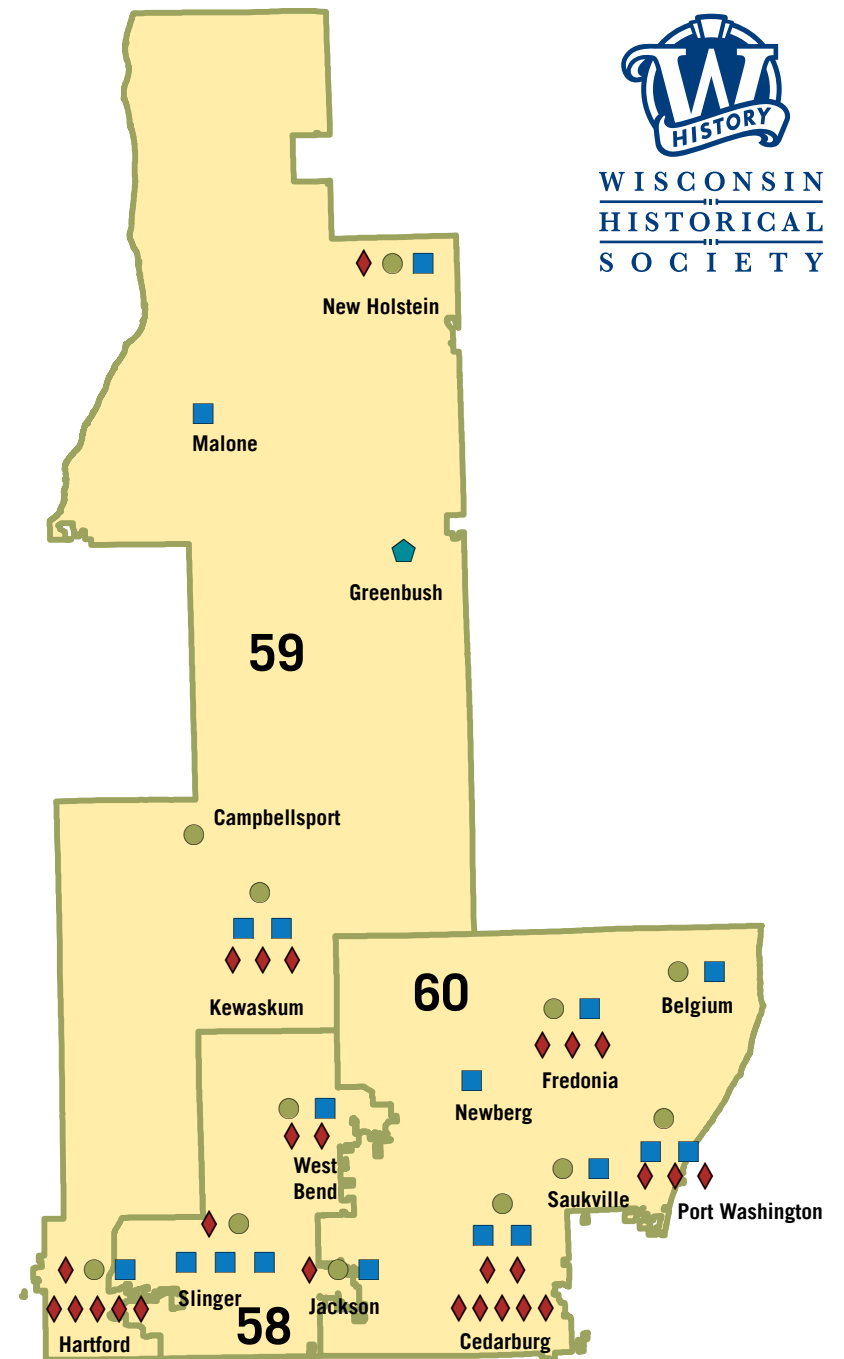
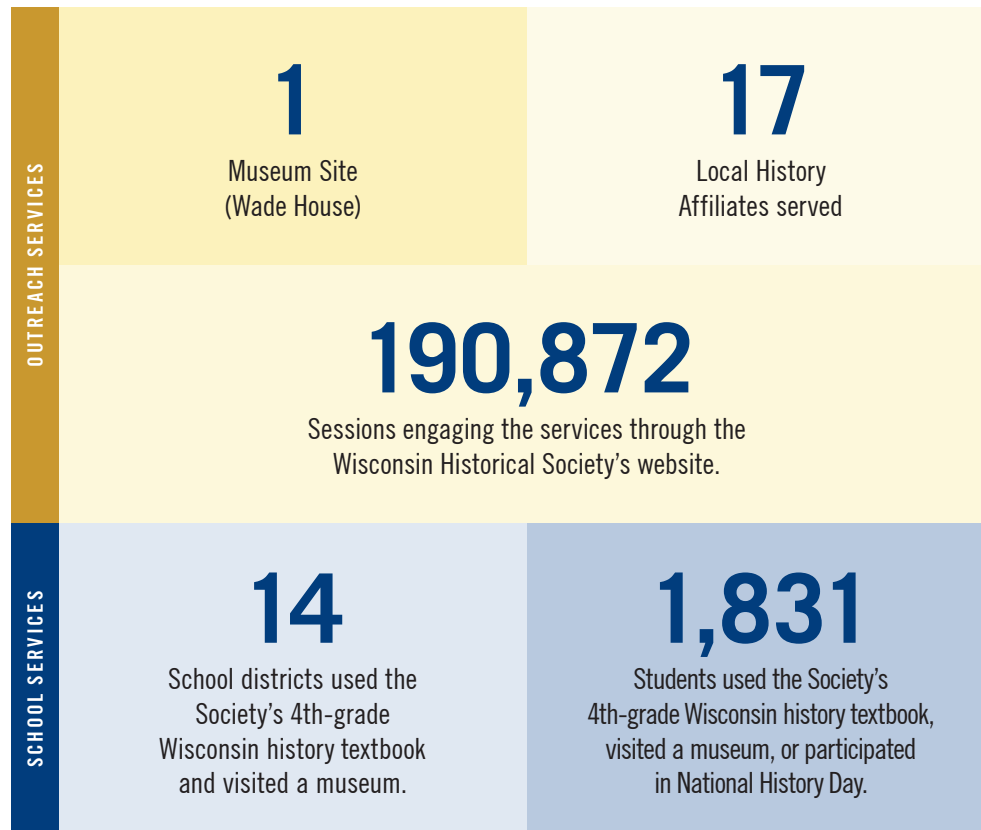
SOURCES: WISCONSIN HISTORICAL SOCIETY, LEGISLATIVE TECHNOLOGY SERVICES BUREAU (LTSB), GOOGLE ANALYTICS

HOW WE SERVE YOUR DISTRICT



Society resources used in Wisconsin's SENATE DISTRICT 20 | ASSEMBLY DISTRICTS 58-60

- Local Affiliates
- ◆ Schools Visiting Museums or Historic Sites
- Outreach Services
- ◆ Society Museum or Historic Site



Due to the re-opening of sites and programming after COVID-19, operations at the Society and outreach across the state are slowly continuing to return to normal service.

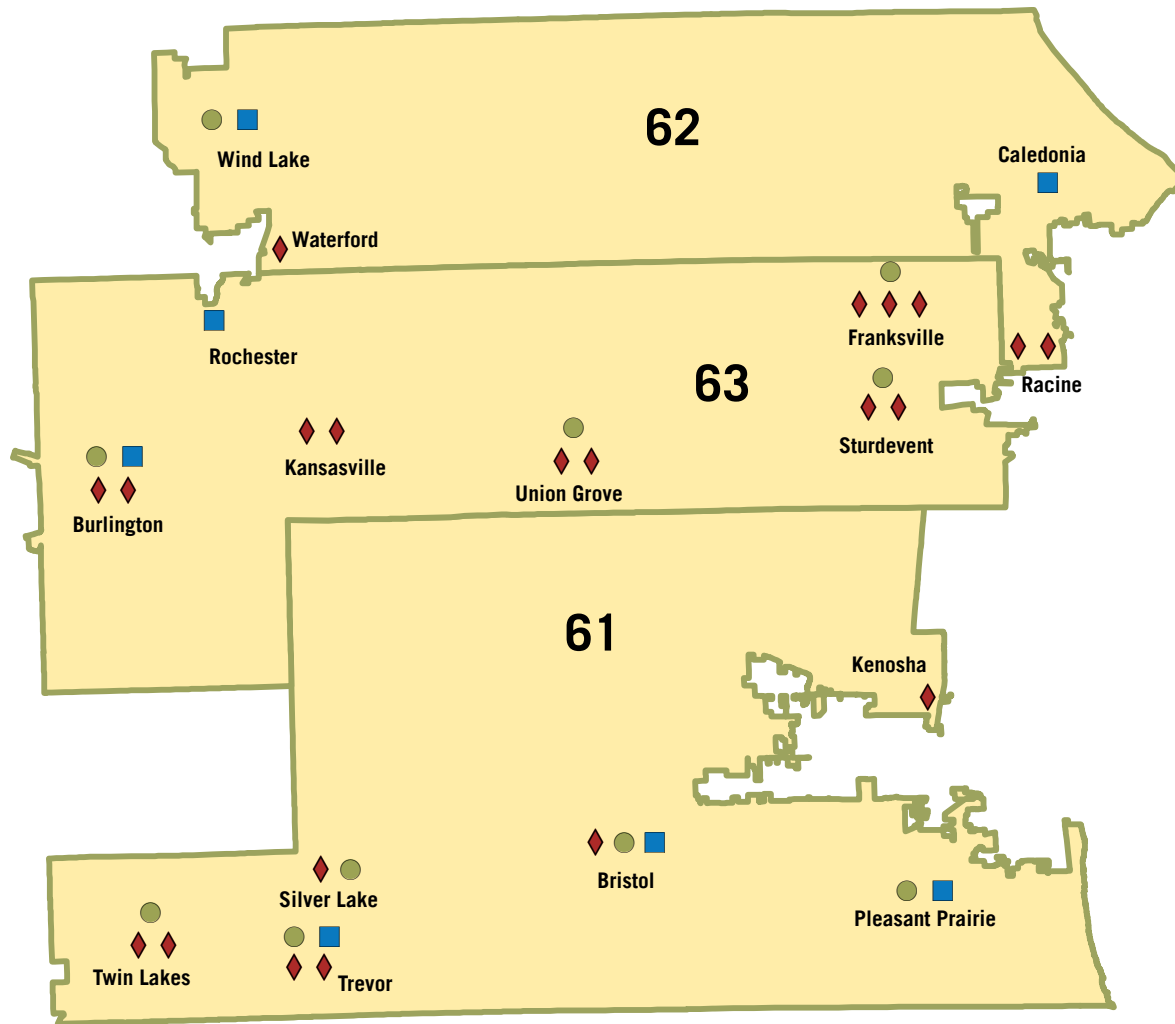
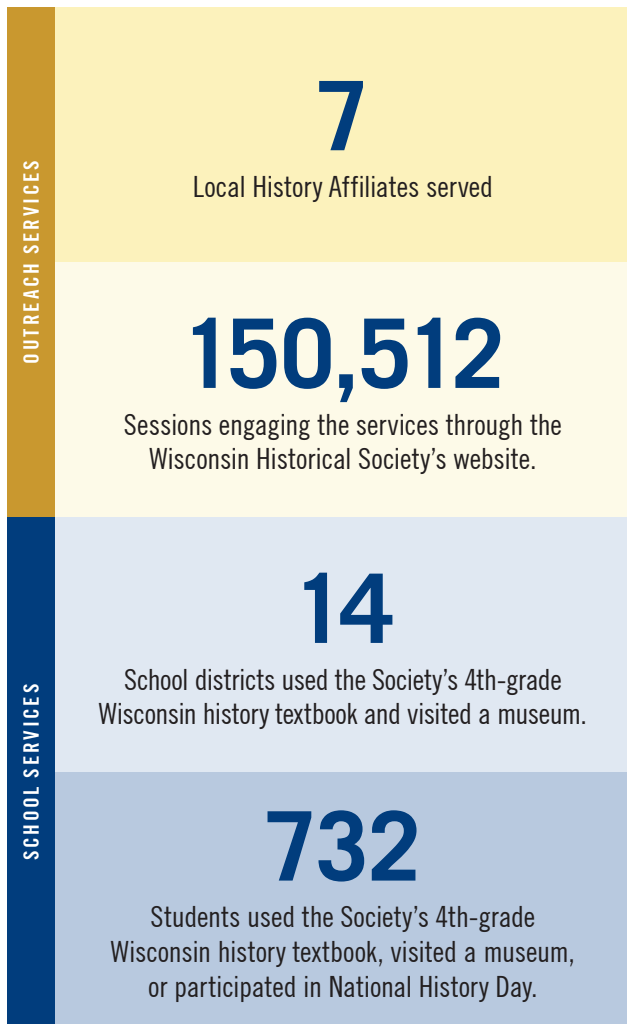
HOW WE SERVE YOUR DISTRICT



WISCONSIN
HISTORICAL
SOCIETY

Society resources used in Wisconsin's
SENATE DISTRICT 21
ASSEMBLY DISTRICTS 61-63

- Local Affiliates
- Outreach Services
- ◆ Schools Visiting Museums or Historic Sites



Due to the re-opening of sites and programming after COVID-19, operations at the Society and outreach across the state are slowly continuing to return to normal service.

SOURCES: WISCONSIN HISTORICAL SOCIETY, LEGISLATIVE TECHNOLOGY SERVICES BUREAU (LTSB), GOOGLE ANALYTICS

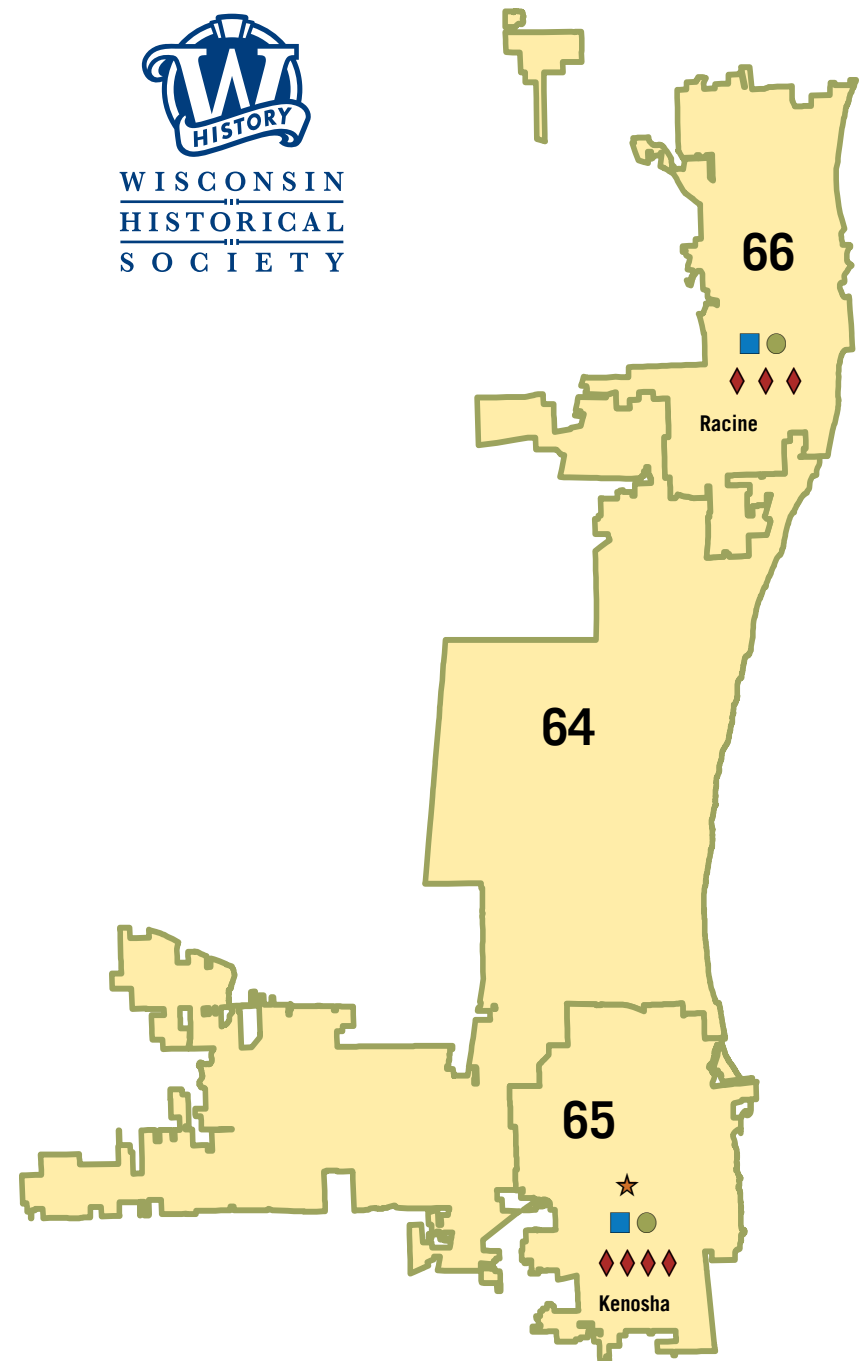
HOW WE SERVE YOUR DISTRICT



Society resources used in Wisconsin's

SENATE DISTRICT 22 | ASSEMBLY DISTRICTS 64-66

- Local Affiliates
- ◆ Schools Visiting Museums or Historic Sites
- Outreach Services
- ★ Area Research Center



Due to the re-opening of sites and programming after COVID-19, operations at the Society and outreach across the state are slowly continuing to return to normal service.

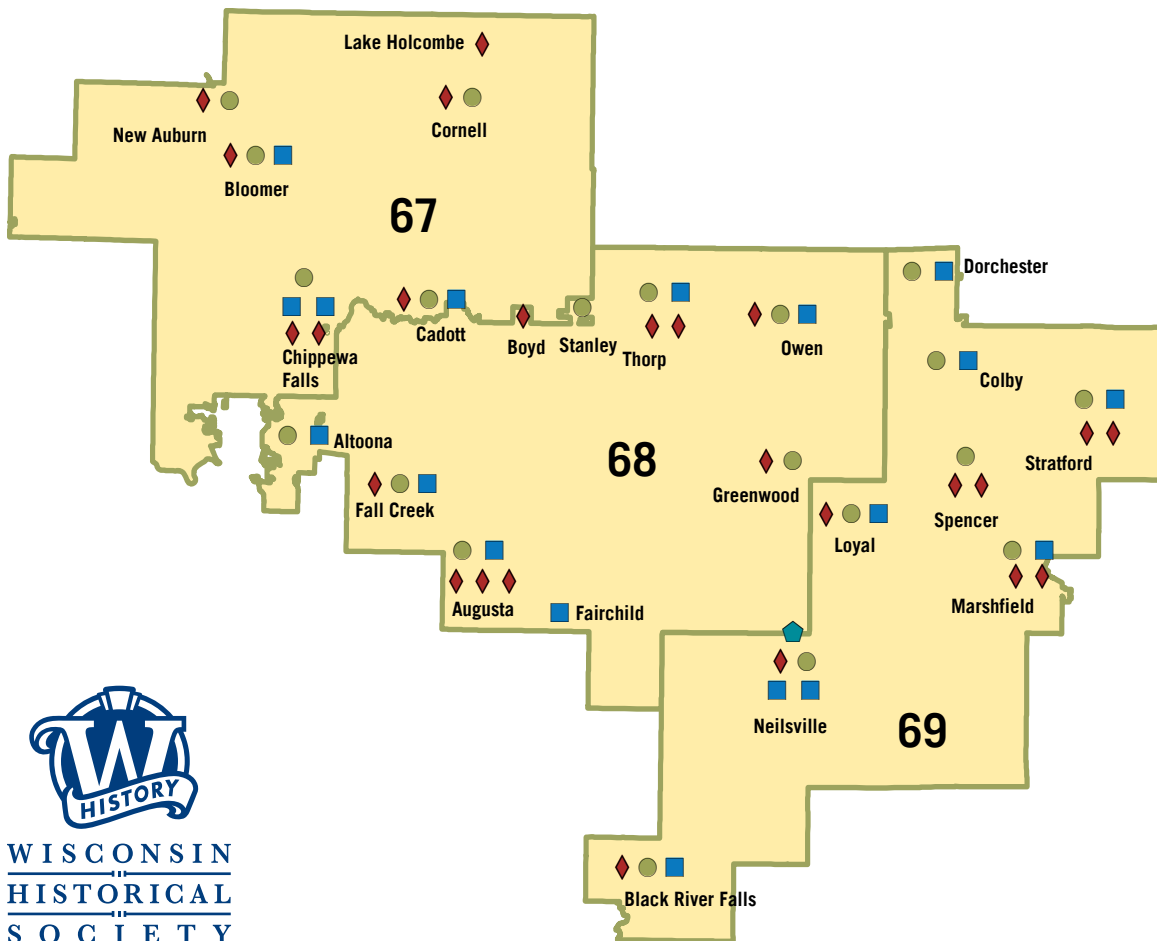
SOURCES: WISCONSIN HISTORICAL SOCIETY, LEGISLATIVE TECHNOLOGY SERVICES BUREAU (LTSB), GOOGLE ANALYTICS

HOW WE SERVE YOUR DISTRICT

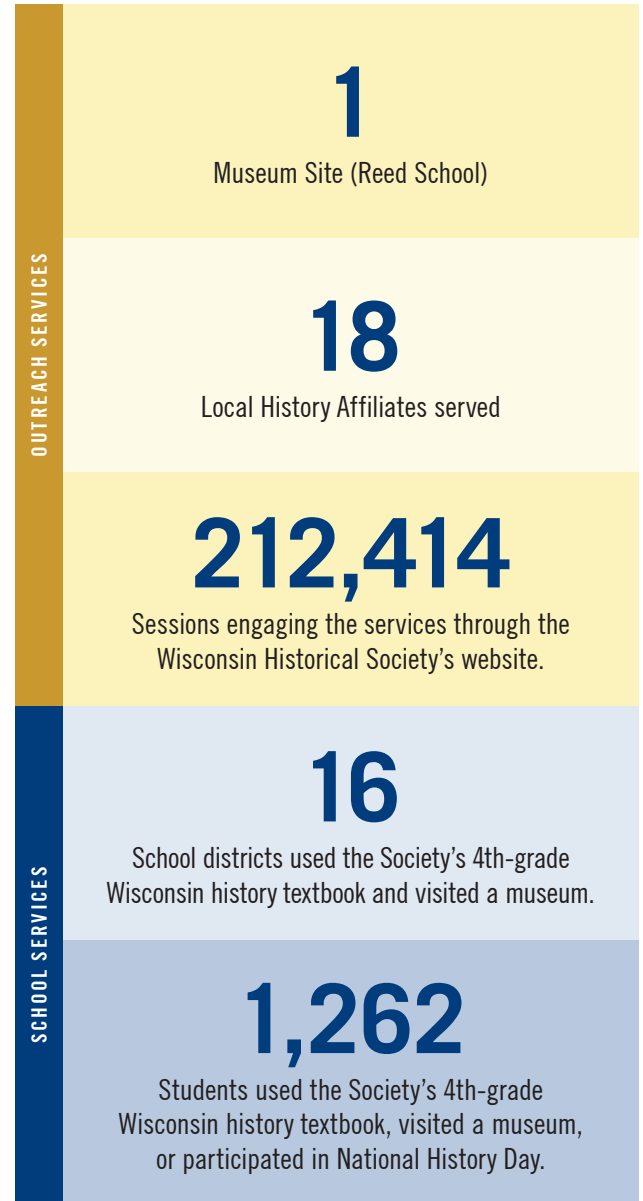
Society resources used in Wisconsin's

SENATE DISTRICT 23 | ASSEMBLY DISTRICTS 67-69

- Local Affiliates
- ◆ Schools Visiting Museums or Historic Sites
- Outreach Services
- ◆ Society Museum or Historic Site



WISCONSIN
HISTORICAL
SOCIETY



Due to the re-opening of sites and programming after COVID-19, operations at the Society and outreach across the state are slowly continuing to return to normal service.

SOURCES: WISCONSIN HISTORICAL SOCIETY, LEGISLATIVE TECHNOLOGY SERVICES BUREAU (LTSB), GOOGLE ANALYTICS

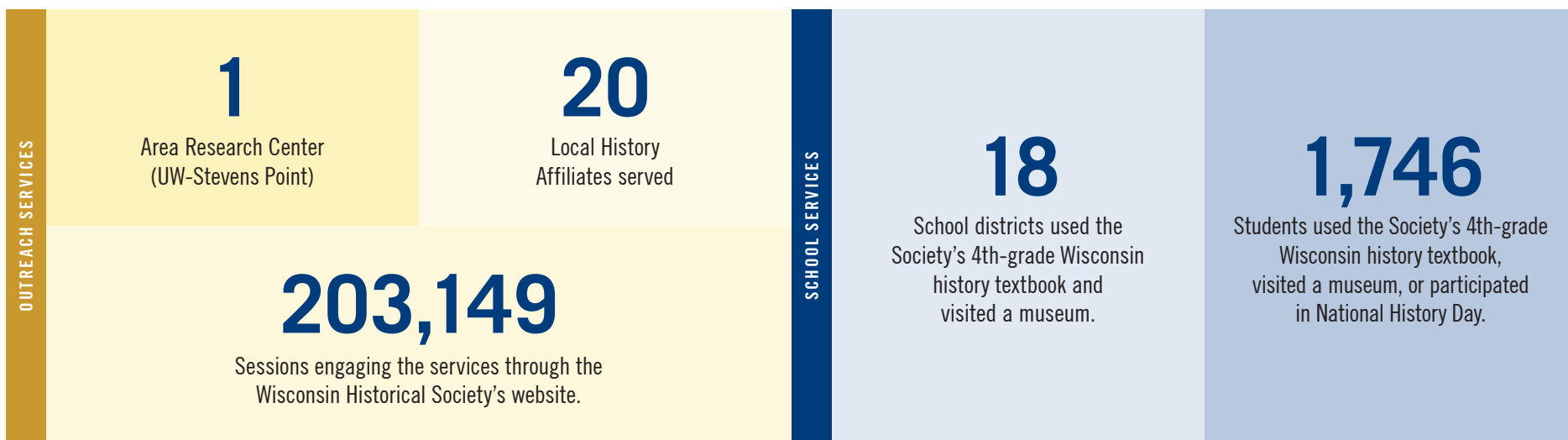
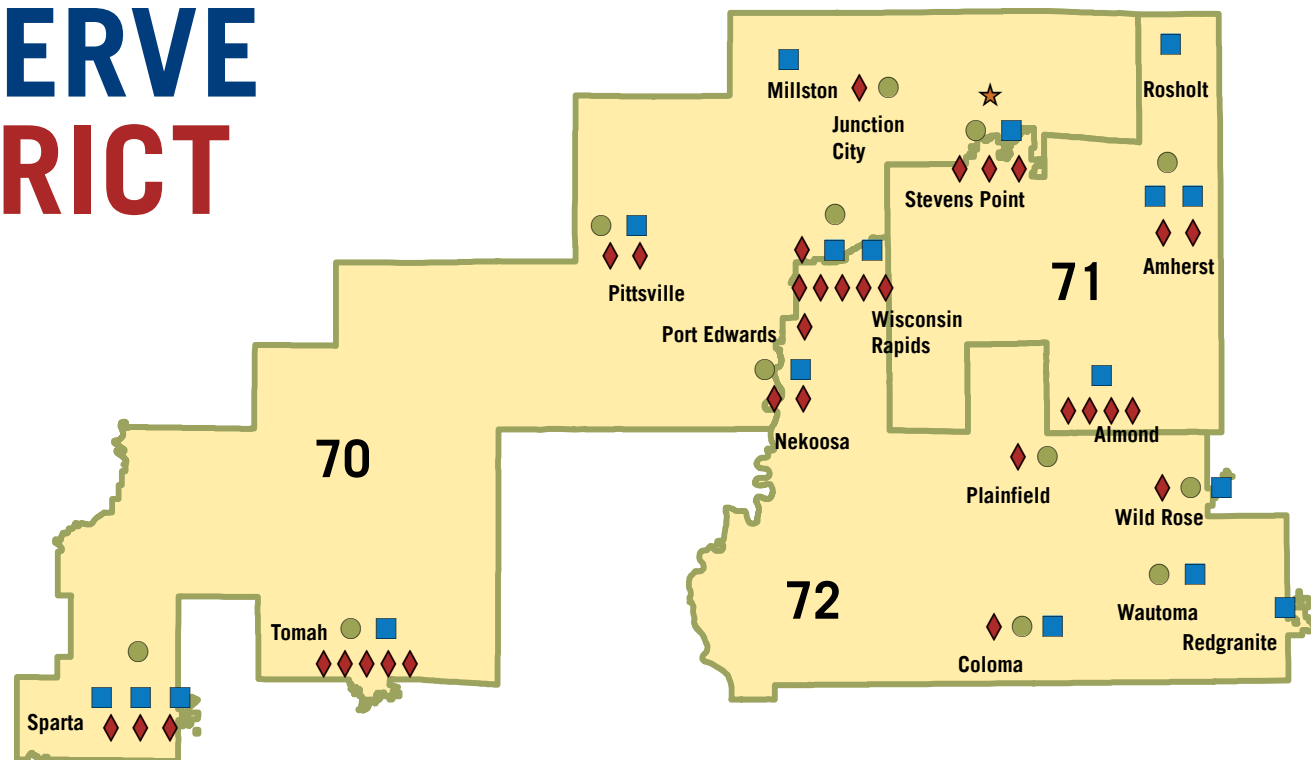
HOW WE SERVE YOUR DISTRICT

Society resources used in Wisconsin's
SENATE DISTRICT 24
ASSEMBLY DISTRICTS 70-72

- Local Affiliates
- Outreach Services
- ◆ Schools Visiting Museums or Historic Sites
- ★ Area Research Center



WISCONSIN
 HISTORICAL
 SOCIETY



Due to the re-opening of sites and programming after COVID-19, operations at the Society and outreach across the state are slowly continuing to return to normal service.

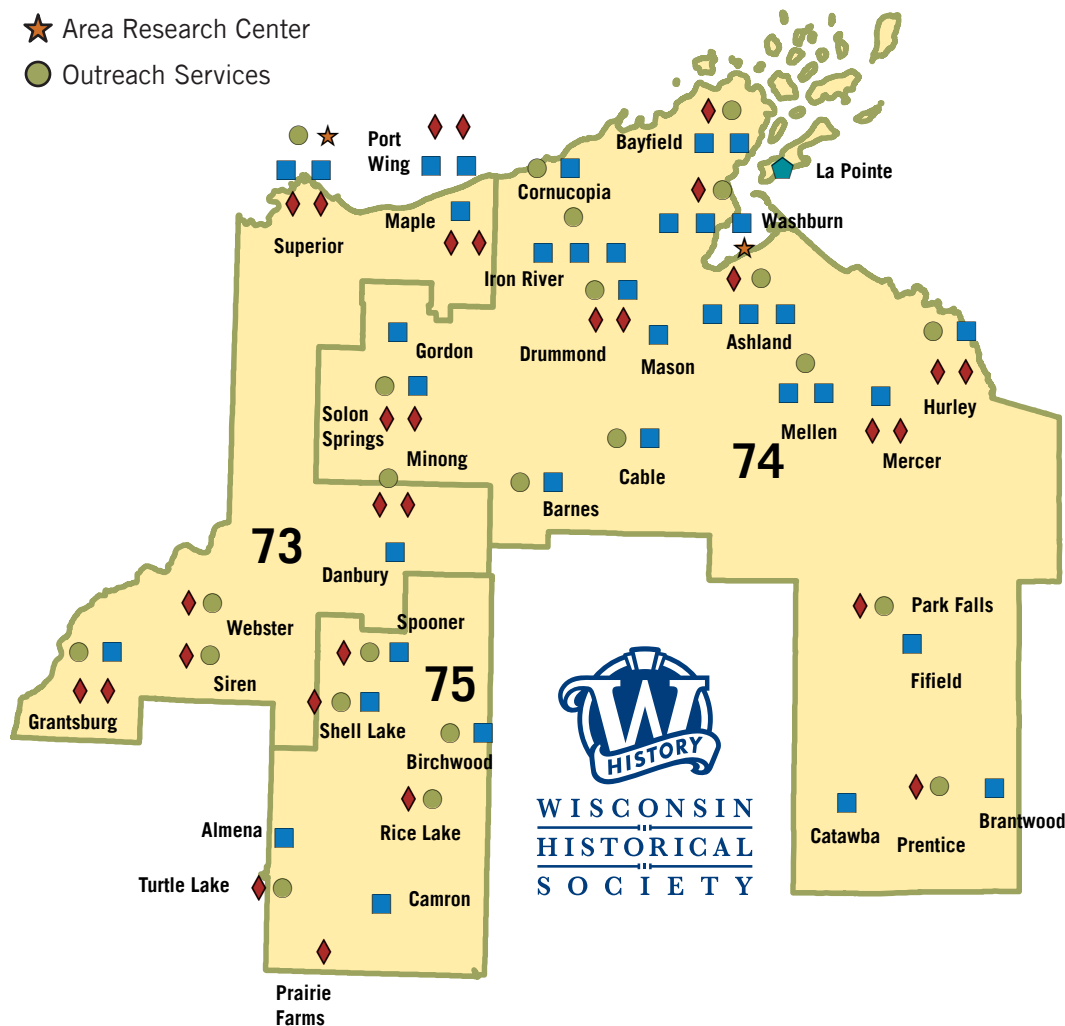
SOURCES: WISCONSIN HISTORICAL SOCIETY, LEGISLATIVE TECHNOLOGY SERVICES BUREAU (LTSB), GOOGLE ANALYTICS

HOW WE SERVE YOUR DISTRICT

Society resources used in Wisconsin's

SENATE DISTRICT 25 | ASSEMBLY DISTRICTS 73-75

- Local Affiliates
- ◆ Schools Visiting Museums or Historic Sites
- ◆ Society Museum or Historic Site
- ★ Area Research Center
- Outreach Services



OUTREACH SERVICES	<h2>1</h2> <p>Museum Site (Madeline Island)</p>	<h2>2</h2> <p>Area Research Centers (UW-Superior, Northwoods Area Research Center)</p>
	<h2>37</h2> <p>Local History Affiliates served</p>	<h2>173,771</h2> <p>Sessions engaging the services through the Wisconsin Historical Society's website.</p>
SCHOOL SERVICES	<h2>25</h2> <p>School districts used the Society's 4th-grade Wisconsin history textbook and visited a museum.</p>	<h2>1,648</h2> <p>Students used the Society's 4th-grade Wisconsin history textbook, visited a museum, or participated in National History Day.</p>

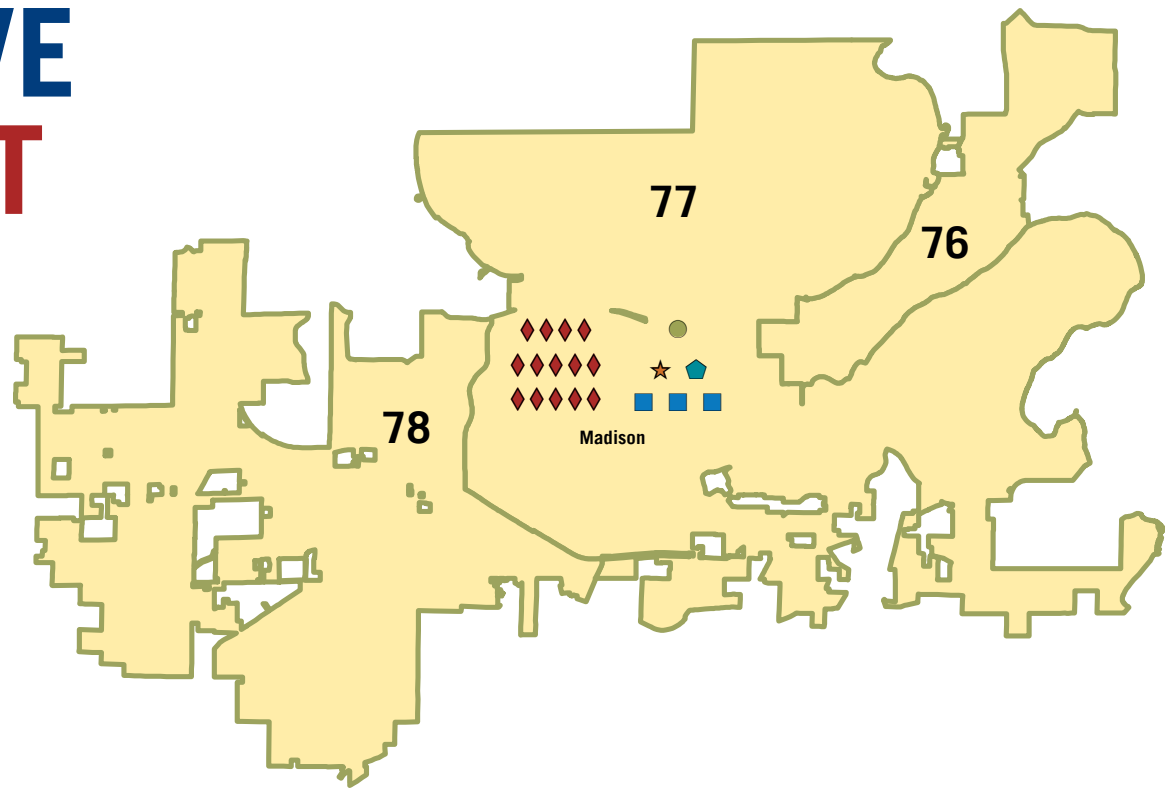
Due to the re-opening of sites and programming after COVID-19, operations at the Society and outreach across the state are slowly continuing to return to normal service.

SOURCES: WISCONSIN HISTORICAL SOCIETY, LEGISLATIVE TECHNOLOGY SERVICES BUREAU (LTSB), GOOGLE ANALYTICS

HOW WE SERVE YOUR DISTRICT

Society resources used in Wisconsin's
SENATE DISTRICT 26
ASSEMBLY DISTRICTS 76-78

- Local Affiliates ● Outreach Services
- ◆ Schools Visiting Museums or Historic Sites
- ◆ Society Museum or Historic Site
- ★ Area Research Center



WISCONSIN
 HISTORICAL
 SOCIETY



Due to the re-opening of sites and programming after COVID-19, operations at the Society and outreach across the state are slowly continuing to return to normal service.

SOURCES: WISCONSIN HISTORICAL SOCIETY, LEGISLATIVE TECHNOLOGY SERVICES BUREAU (LTSB), GOOGLE ANALYTICS

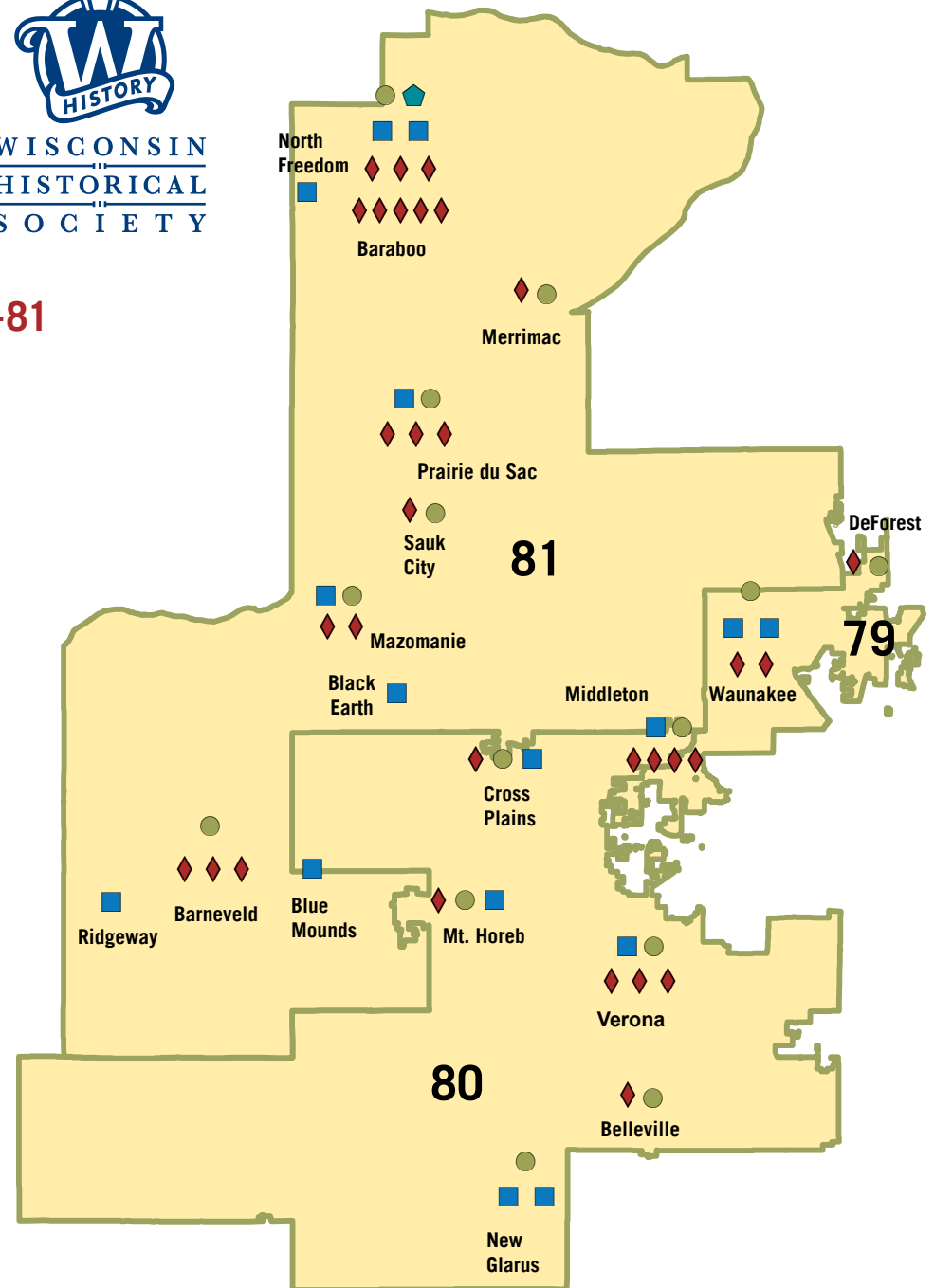
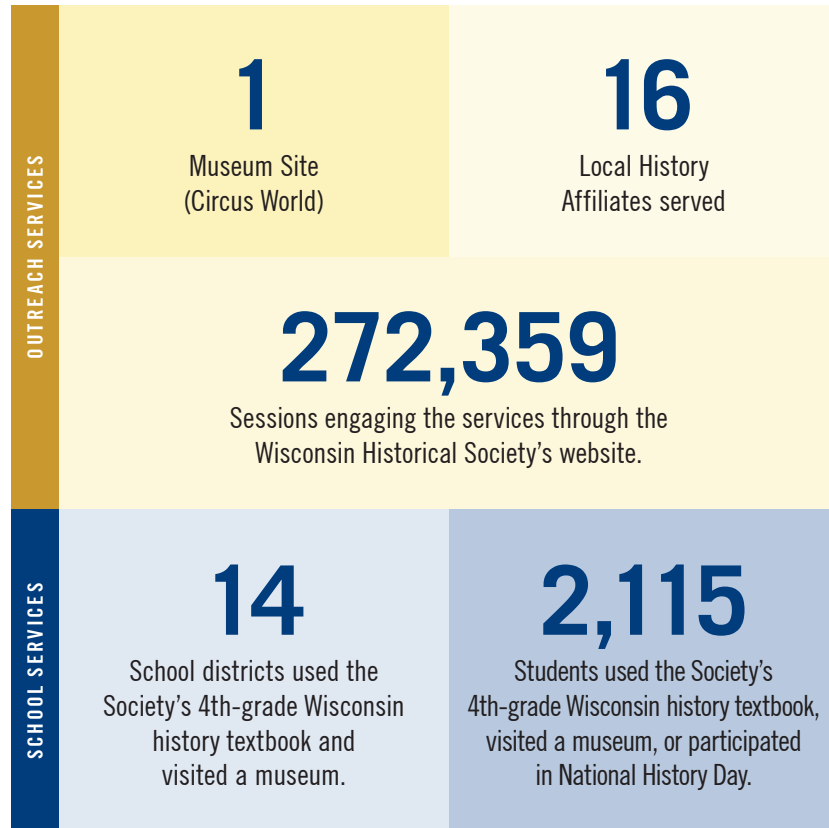
HOW WE SERVE YOUR DISTRICT



Society resources used in Wisconsin's

SENATE DISTRICT 27 | ASSEMBLY DISTRICTS 79-81

- Local Affiliates
- ◆ Schools Visiting Museums or Historic Sites
- Outreach Services
- ◆ Society Museum or Historic Site



Due to the re-opening of sites and programming after COVID-19, operations at the Society and outreach across the state are slowly continuing to return to normal service.

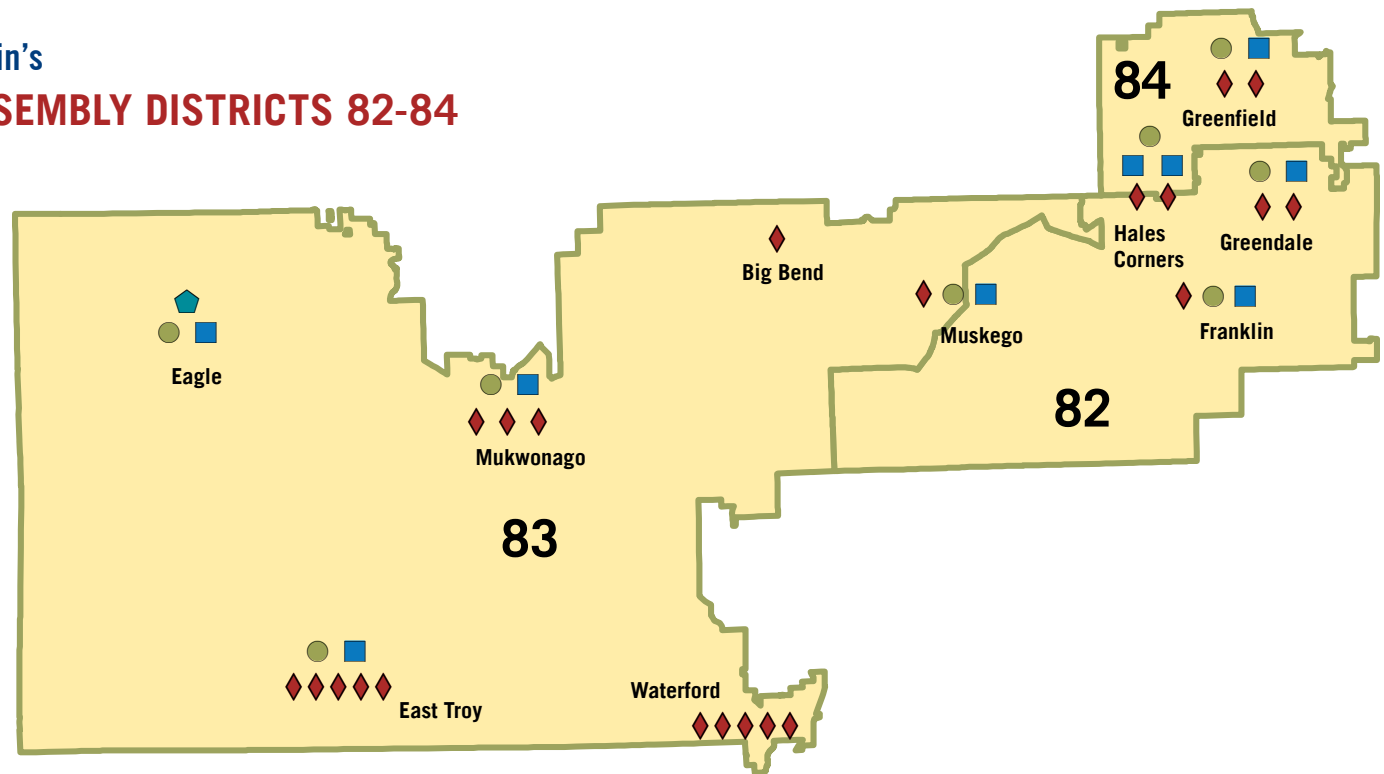
SOURCES: WISCONSIN HISTORICAL SOCIETY, LEGISLATIVE TECHNOLOGY SERVICES BUREAU (LTSB), GOOGLE ANALYTICS

HOW WE SERVE YOUR DISTRICT

Society resources used in Wisconsin's

SENATE DISTRICT 28 | ASSEMBLY DISTRICTS 82-84

- Local Affiliates
- Outreach Services
- ◆ Schools Visiting Museums or Historic Sites
- ⬠ Society Museum or Historic Site



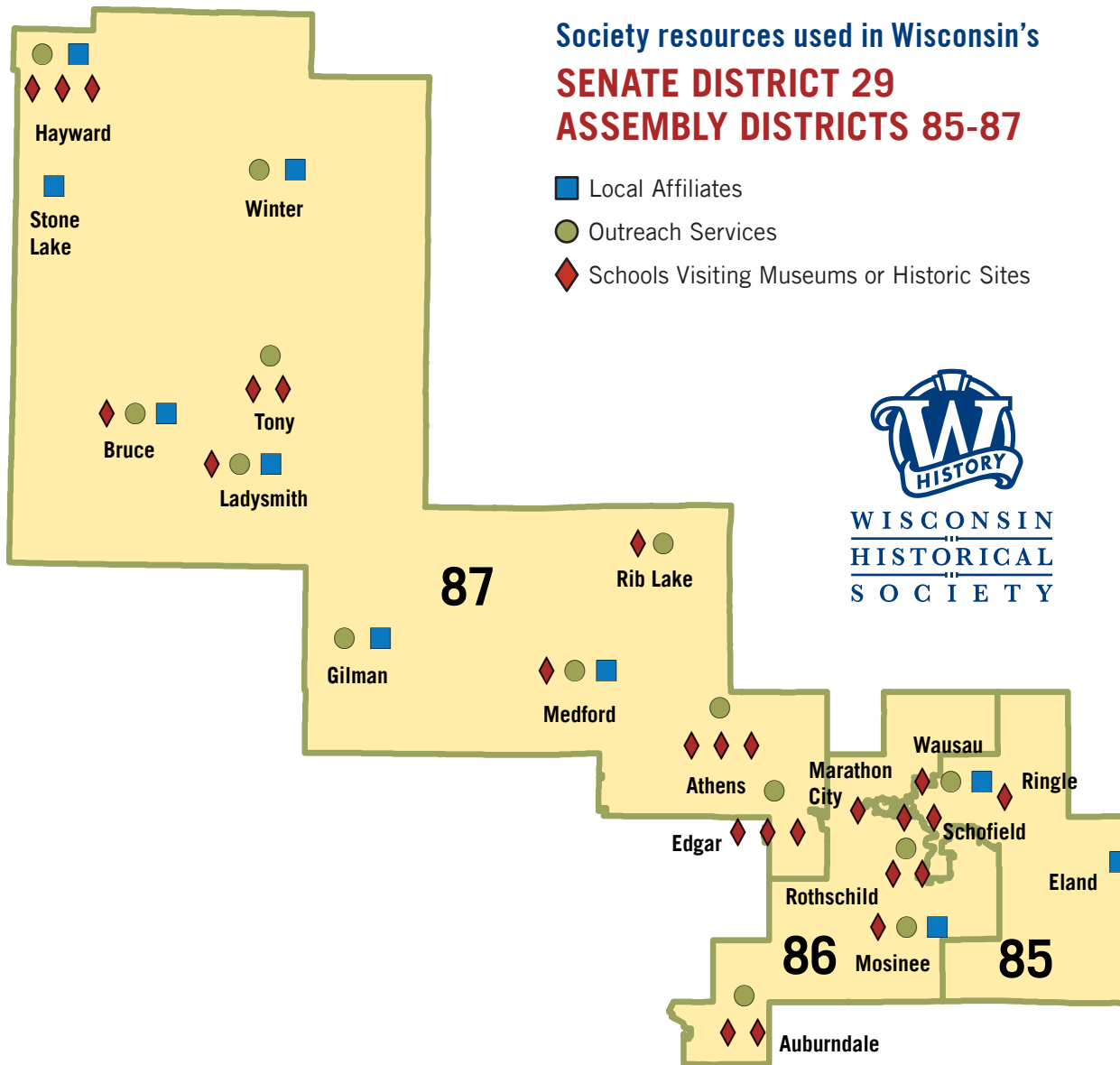
WISCONSIN
HISTORICAL
SOCIETY

OUTREACH SERVICES	1 Museum Site (Old World Wisconsin)	9 Local History Affiliates served	SCHOOL SERVICES	10 School districts used the Society's 4th-grade Wisconsin history textbook and visited a museum.	2,092 Students used the Society's 4th-grade Wisconsin history textbook, visited a museum, or participated in National History Day.
	176,990 Sessions engaging the services through the Wisconsin Historical Society's website.				

Due to the re-opening of sites and programming after COVID-19, operations at the Society and outreach across the state are slowly continuing to return to normal service.

SOURCES: WISCONSIN HISTORICAL SOCIETY, LEGISLATIVE TECHNOLOGY SERVICES BUREAU (LTSB), GOOGLE ANALYTICS

HOW WE SERVE YOUR DISTRICT



OUTREACH SERVICES	<p>9</p> <p>Local History Affiliates served</p>
	<p>172,596</p> <p>Sessions engaging the services through the Wisconsin Historical Society's website.</p>
SCHOOL SERVICES	<p>20</p> <p>School districts used the Society's 4th-grade Wisconsin history textbook and visited a museum.</p>
	<p>1,978</p> <p>Students used the Society's 4th-grade Wisconsin history textbook, visited a museum, or participated in National History Day.</p>

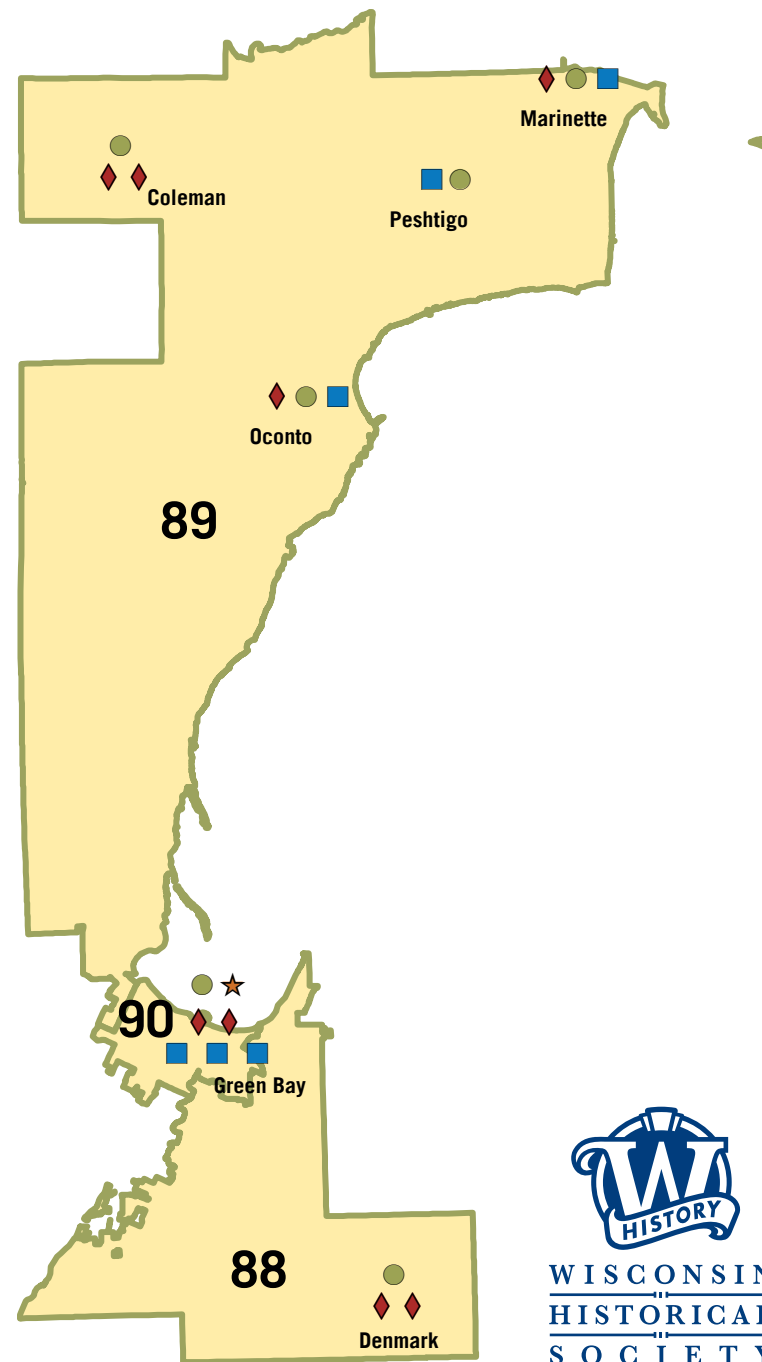
Due to the re-opening of sites and programming after COVID-19, operations at the Society and outreach across the state are slowly continuing to return to normal service.

SOURCES: WISCONSIN HISTORICAL SOCIETY, LEGISLATIVE TECHNOLOGY SERVICES BUREAU (LTSB), GOOGLE ANALYTICS

HOW WE SERVE YOUR DISTRICT

Society resources used in Wisconsin's
SENATE DISTRICT 30 | ASSEMBLY DISTRICTS 88-90

- Local Affiliates
- Outreach Services
- ★ Area Research Center
- ◆ Schools Visiting Museums or Historic Sites



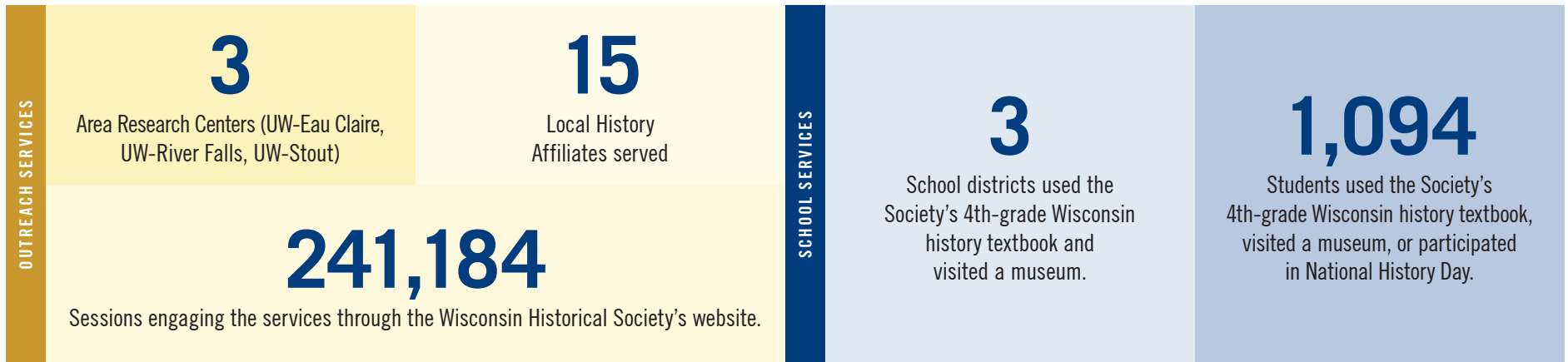
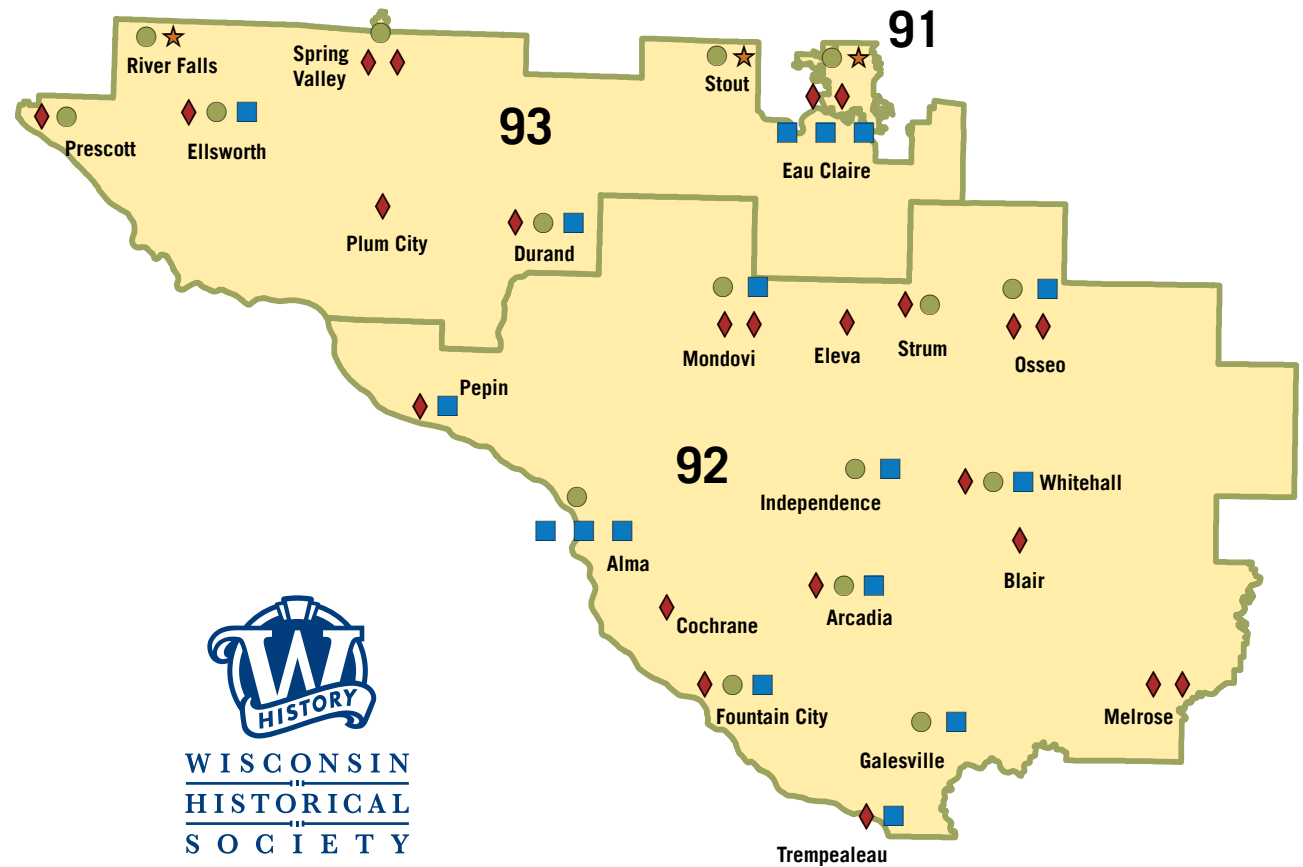
Due to the re-opening of sites and programming after COVID-19, operations at the Society and outreach across the state are slowly continuing to return to normal service.

SOURCES: WISCONSIN HISTORICAL SOCIETY, LEGISLATIVE TECHNOLOGY SERVICES BUREAU (LTSB), GOOGLE ANALYTICS

HOW WE SERVE YOUR DISTRICT

Society resources used in Wisconsin's
SENATE DISTRICT 31
ASSEMBLY DISTRICTS 91-93

- Local Affiliates
- Outreach Services
- ◆ Schools Visiting Museums or Historic Sites
- ★ Area Research Center



Due to the re-opening of sites and programming after COVID-19, operations at the Society and outreach across the state are slowly continuing to return to normal service.

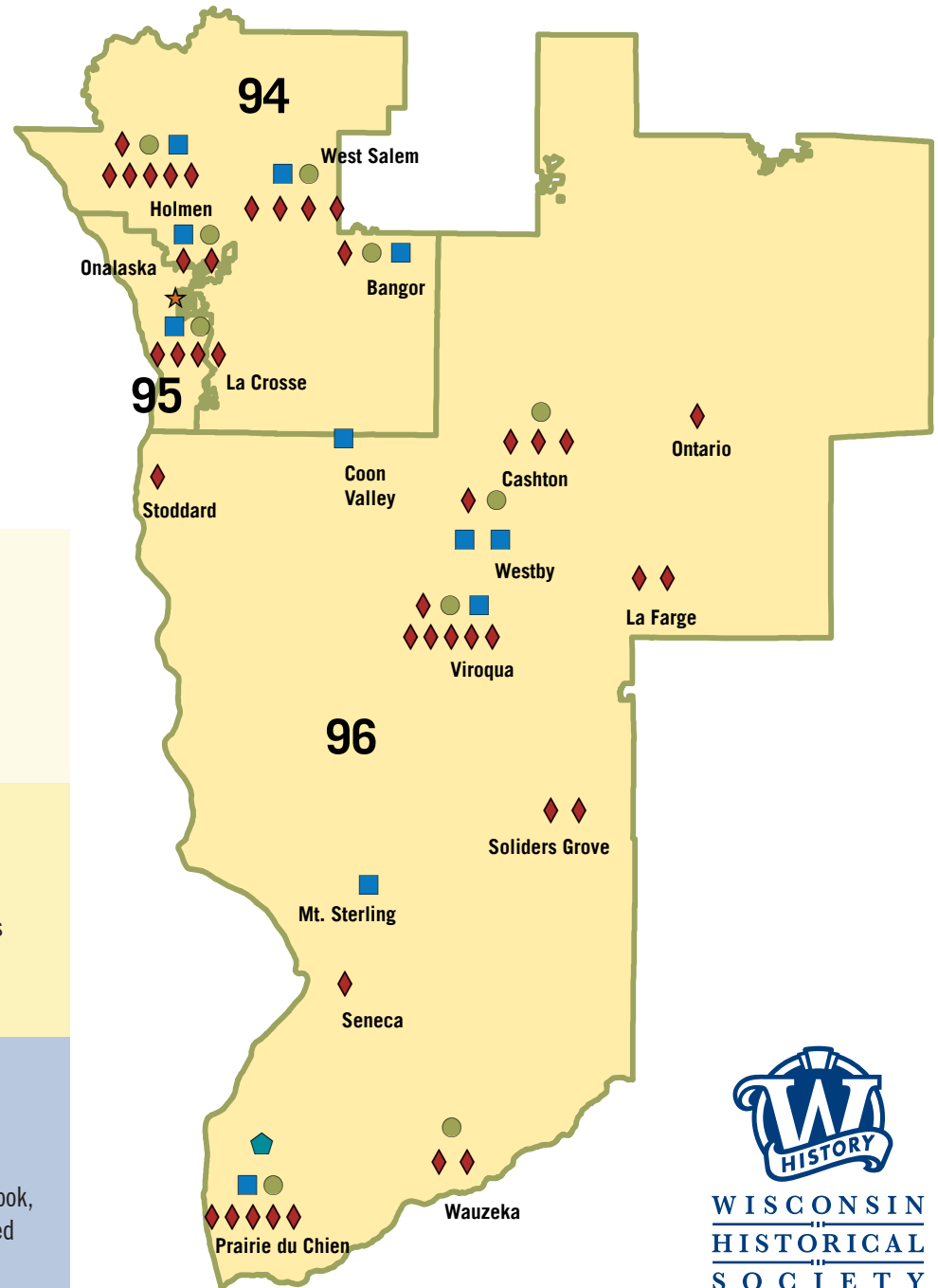
SOURCES: WISCONSIN HISTORICAL SOCIETY, LEGISLATIVE TECHNOLOGY SERVICES BUREAU (LTSB), GOOGLE ANALYTICS

HOW WE SERVE YOUR DISTRICT

Society resources used in Wisconsin's SENATE DISTRICT 32 | ASSEMBLY DISTRICTS 94-96

- Local Affiliates ★ Area Research Center
- Outreach Services ◆ Society Museum or Historic Site
- ◆ Schools Visiting Museums or Historic Sites

OUTREACH SERVICES	<h1>1</h1> <p>Area Research Center (UW-La Crosse)</p>	<h1>1</h1> <p>Museum Site (Vilia Louis)</p>
	<h1>11</h1> <p>Local History Affiliates served</p>	<h1>125,197</h1> <p>Sessions engaging the services through the Wisconsin Historical Society's website.</p>
SCHOOL SERVICES	<h1>18</h1> <p>School districts used the Society's 4th-grade Wisconsin history textbook and visited a museum.</p>	<h1>2,279</h1> <p>Students used the Society's 4th-grade Wisconsin history textbook, visited a museum, or participated in National History Day.</p>



**WISCONSIN
HISTORICAL
SOCIETY**

Due to the re-opening of sites and programming after COVID-19, operations at the Society and outreach across the state are slowly continuing to return to normal service.

SOURCES: WISCONSIN HISTORICAL SOCIETY, LEGISLATIVE TECHNOLOGY SERVICES BUREAU (LTSB), GOOGLE ANALYTICS

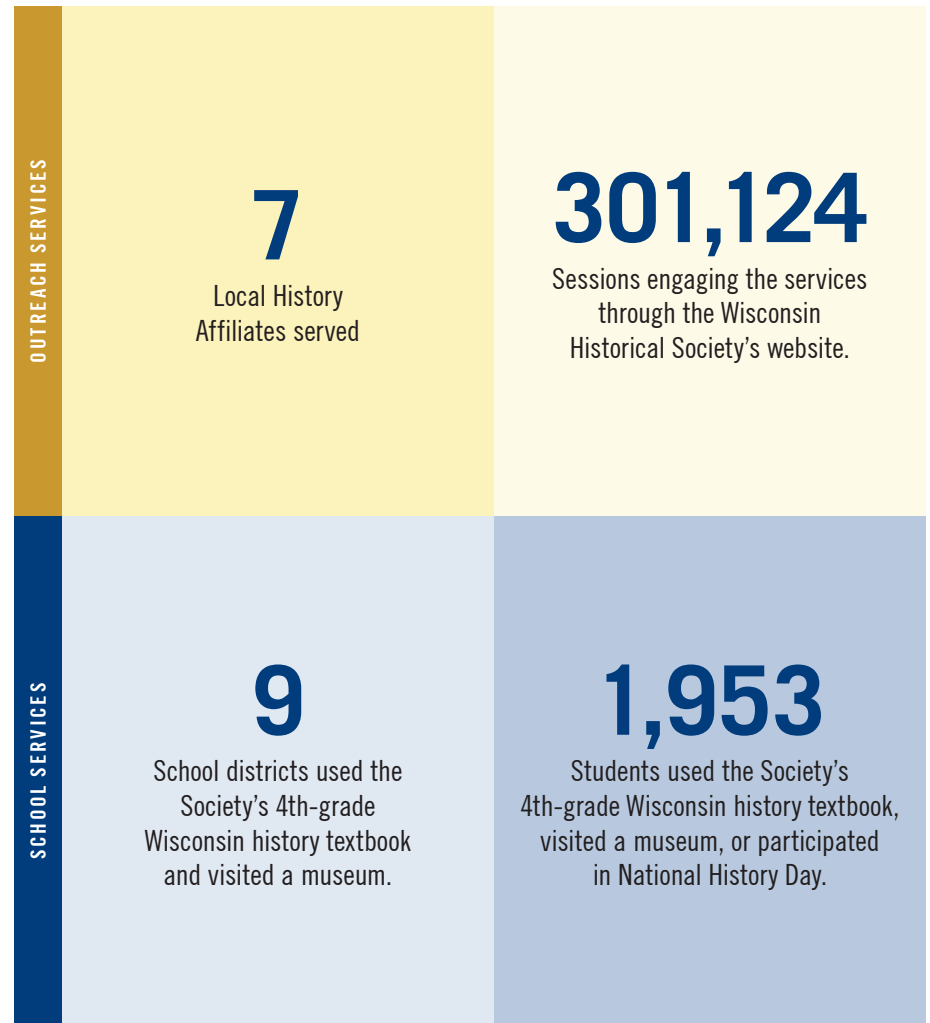
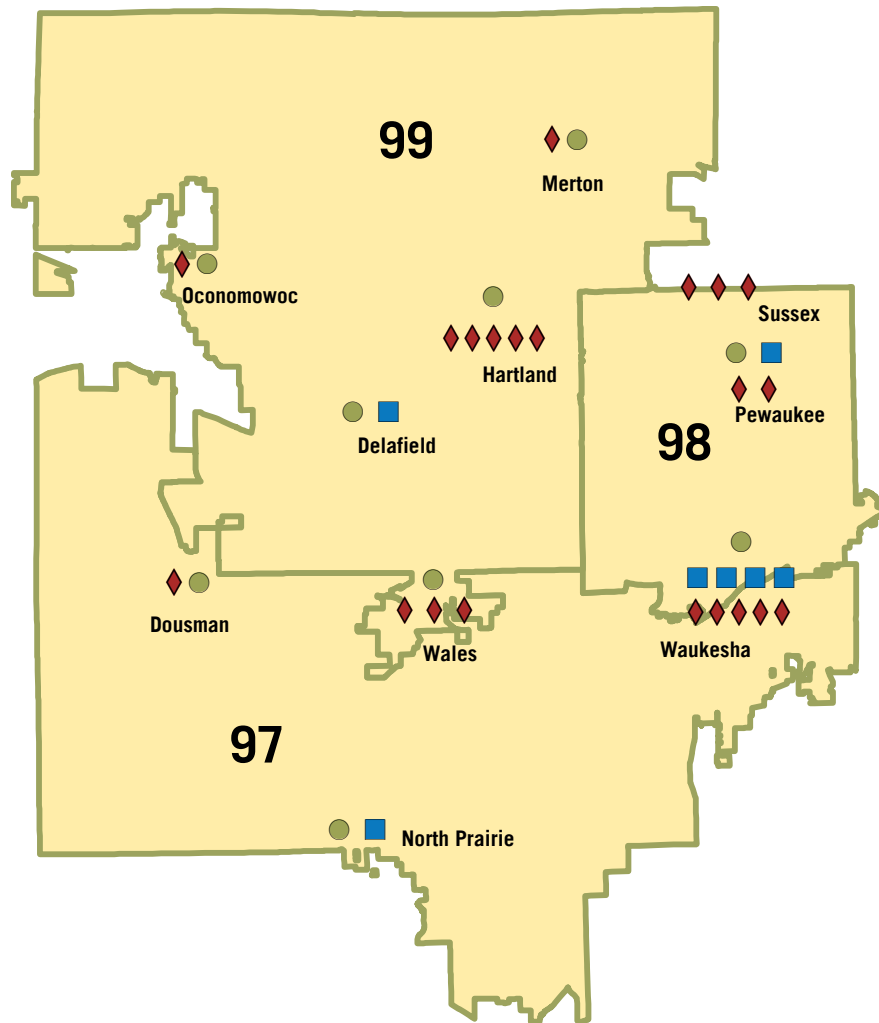
HOW WE SERVE YOUR DISTRICT



WISCONSIN
HISTORICAL
SOCIETY

Society resources used in Wisconsin's
SENATE DISTRICT 33
ASSEMBLY DISTRICTS 97-99

- Local Affiliates
- Outreach Services
- ◆ Schools Visiting Museums or Historic Sites



Due to the re-opening of sites and programming after COVID-19, operations at the Society and outreach across the state are slowly continuing to return to normal service.

SOURCES: WISCONSIN HISTORICAL SOCIETY, LEGISLATIVE TECHNOLOGY SERVICES BUREAU (LTSB), GOOGLE ANALYTICS